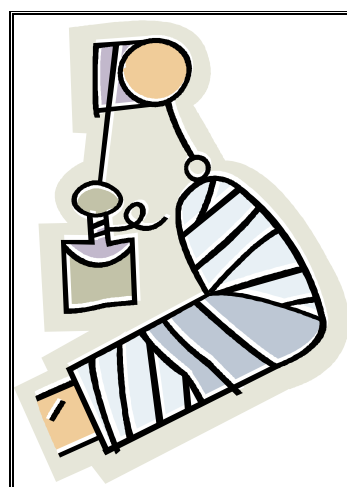
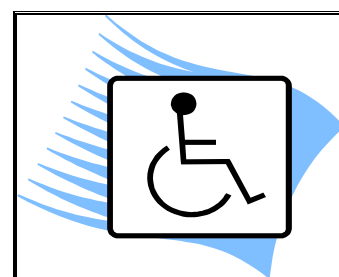
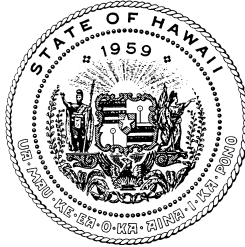


WORKERS' COMPENSATION DATA BOOK 2011



STATE OF HAWAII
DEPARTMENT OF LABOR AND INDUSTRIAL RELATIONS
RESEARCH AND STATISTICS OFFICE



State of Hawaii
Neil Abercrombie, Governor

Department of Labor and Industrial Relations

Dwight Takamine, Director
Audrey Hidano, Deputy Director

Research and Statistics Office

Francisco Corpuz, Chief

Operations Management Information

Elienne Yoshida, Supervisor

Prepared by:

Siriporn Rolseth
Geraldyn Lacno
Tricia Malloy

Disability Compensation Division

Walter Kawamura, Administrator

WORKERS' COMPENSATION DATA BOOK 2011

INTRODUCTION

The WORKERS' COMPENSATION DATA BOOK presents a summary of information on injuries and illnesses reported to the Disability Compensation Division of the State of Hawaii Department of Labor and Industrial Relations.

This publication includes work injury and illness case, cost and days lost information by island, industry, occupation, sex, part of body, average weekly wage, source of injury or illness, marital status, event or exposure, nature of injury or illness and age.



Publications from 2000 are available on the Internet at <http://hawaii.gov/labor/rs/>.

Please direct inquiries or comments to:

State of Hawaii
Department of Labor & Industrial Relations
Research and Statistics Office
Operations Management Information Staff
830 Punchbowl St., Room 304
Honolulu, HI 96813

Data contained in this report – 586-9014
Copies of this report – 586-8999
E-mail: dlir.research@hawaii.gov

"This page is intentionally left blank."

TABLE OF CONTENTS

Highlights 2011	3
2011 Hawaii Reported Injuries and Illnesses	4
2011 Hawaii Processed Cases and Cost	5
2011 Average Cost by Part of Body.....	5
2011 Hawaii Type of Payments by Industry	5
Back Cases: Cost and Days Lost by Nature of Injury and Illness.....	6
2011 Hawaii Workers' Compensation Statistics	
Reported Cases:	
Part of Body Affected by Nature of Injury or Illness.....	7
Event or Exposure by Source of Injury or Illness	7
Reported & Processed Cases, Cost, Days Lost:	
State.....	8
Oahu	11
Maui County	13
Hawaii County	15
Kauai County	17
2011 Hawaii Reported Fatalities	19
2011 Hearings and Decisions Issued.....	20
Maximum Weekly Wage Base and	
Maximum Weekly Benefit Amount History	20
2011 Digest of the Workers' Compensation Law.....	21
Definitions	22
Technical Notes.....	23

HIGHLIGHTS 2011

STATE OF HAWAII

REPORTED CASES: 20,515
PROCESSED CASES: 39,115
PROCESSED CASES WITH COST: 28,686
TOTAL COST: \$246,780,115
COST PER CASE: \$8,603
MEDICAL COST: \$103,511,150
DAYS LOST: 945,665
REPORTED FATALITIES: 24



Kauai County

Reported Cases: 1,296
Processed Cases: 2,361
Processed Cases with Cost: 1,635
Total Cost: \$11,788,325
Cost Per Case: \$7,210
Medical Cost: \$6,489,440
Days Lost: 40,849
Reported Fatality: 2



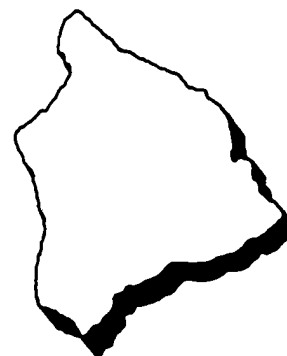
Maui County

Reported Cases: 2,906
Processed Cases: 5,536
Processed Cases with Cost: 4,065
Total Cost: \$31,532,629
Cost Per Case: \$7,757
Medical Cost: \$12,889,868
Days Lost: 116,030
Reported Fatality: 2



Oahu

Reported Cases: 13,770
Processed Cases: 25,744
Processed Cases with Cost: 18,993
Total Cost: \$166,181,078
Cost Per Case: \$8,750
Medical Cost: \$69,392,546
Days Lost: 621,048
Reported Fatality: 16



Hawaii County

Reported Cases: 2,543
Processed Cases: 5,474
Processed Cases with Cost: 3,993
Total Cost: \$37,278,083
Cost Per Case: \$9,336
Medical Cost: \$14,739,296
Days Lost: 167,738
Reported Fatality: 4

Note: Cost may not add due to rounding.

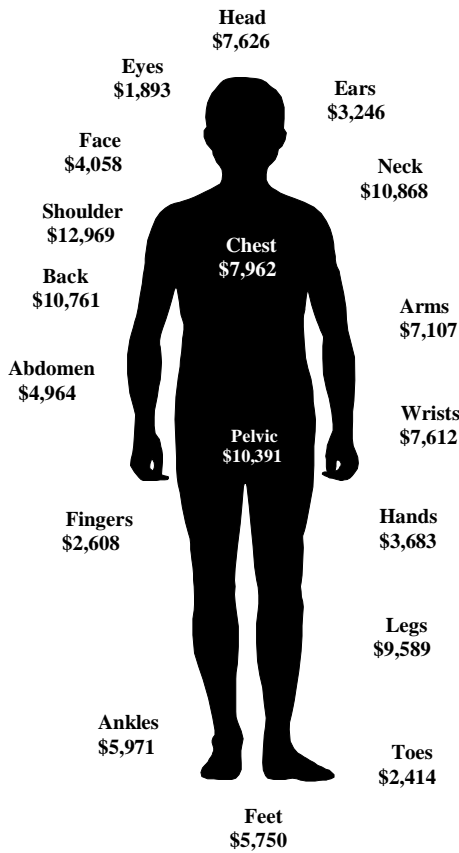
2011 HAWAII REPORTED INJURIES AND ILLNESSES

Employment and Reported Cases by Industry for Hawaii						
INDUSTRY	2010			2011		
	Employment	Reported Cases	Frequency	Employment	Reported Cases	Frequency
Total	552,400	20,654	1 in 27	559,164	20,515	1 in 27
Natural Resources & Mining	6,489	254	1 in 26	6,385	280	1 in 23
Construction	28,540	1,425	1 in 20	28,427	1,327	1 in 21
Manufacturing	12,935	614	1 in 21	13,184	616	1 in 21
Wholesale Trade	17,699	682	1 in 26	17,465	663	1 in 26
Retail Trade	65,921	2,704	1 in 24	67,095	2,625	1 in 26
Transportation & Warehousing	23,159	1,413	1 in 16	23,766	1,350	1 in 18
Utilities	3,213	94	1 in 34	3,327	109	1 in 31
Information	9,877	342	1 in 29	8,479	239	1 in 35
Finance, Insurance, Real Estate, Rent & Leasing	26,882	582	1 in 46	26,588	636	1 in 42
Professional, Scientific & Technical Services	24,160	286	1 in 84	24,318	284	1 in 86
Management of Companies & Enterprises	6,635	351	1 in 19	6,917	350	1 in 20
Administrative, Support & Waste Management	40,760	1,395	1 in 29	43,930	1,530	1 in 29
Educational Services	13,758	371	1 in 37	13,834	339	1 in 41
Health Care & Social Assistance	60,664	1,966	1 in 31	61,217	1,923	1 in 32
Arts, Entertainment & Recreation	10,363	405	1 in 26	10,571	450	1 in 23
Accommodations & Food Services	89,981	3,285	1 in 27	92,665	3,283	1 in 28
Other Services, except Public Administration	24,098	699	1 in 34	24,209	705	1 in 34
Public Administration	86,820	3,764	1 in 23	86,541	3,779	1 in 23
Information Not Available/Unclassified	446	22	1 in 20	246	27	1 in 9

- The annual employment level rose by 6,764 or 1.2 percent to 559,164, reflecting increases to the employment levels for 12 out of the 18 industries.
- Administrative, support & waste management had the largest increase in the number of employees. Employment increased by 3,170 or 7.8 percent to 43,930. With an increase to the number of reported cases, its frequency remained unchanged at 1 injury for every 29 workers.
- In 2011, the number of reported injuries and illnesses decreased by 139 cases or 0.7 percent to 20,515.
- The information industry had the most significant reduction in employment with a drop of 1,398 workers. It also experienced the greatest decline in reported injuries and illnesses, decreasing 103 to 239 cases.
- Since 2009, the industry with the highest frequency of injured workers to employment has been transportation & warehousing. In 2011, its frequency was 1 injury in every 18 workers.
- For the past 7 years, the lowest frequency occurred in the professional, scientific & technical services industry. In 2011, the frequency was 1 injury in every 86 workers.

2011 HAWAII PROCESSED CASES AND COST

2011 Average Cost by Part of Body



- Processed cases increased by 173 cases or 0.4 percent to 39,115 in 2011.
- Total workers' compensation payment increased by \$4.4 million or 1.8 percent over the year to \$246,780,115.
- Shoulder had the highest average cost of all body parts since 2002 (trunk broken down to shoulder, chest, abdomen, and pelvic). In 2011, the average cost for shoulder was \$12,969, increasing \$375 from the previous year.
- Eyes had the lowest average cost by part of body for over 10 years.
- Neck had the highest increase in average cost by body part, increasing \$1,350 to \$10,868 in 2011.
- Head had the greatest decrease in average cost by body part, dropping \$1,806 to \$7,626 over the year.
- Medical stood at \$103,511,150, accounting for 41.9 percent of the total workers' compensation cost.
- The largest average medical cost by industry was construction at \$5,778.
- The accommodation and food services industry had the lowest average medical cost at \$2,849.

2011 HAWAII TYPE OF

INDUSTRY	TOTAL WORKERS' COMPENSATION COST	TEMPORARY TOTAL DISABILITY		TEMPORARY PARTIAL DISABILITY		PERMANENT TOTAL DISABILITY	
		Cases	Cost	Cases	Cost	Cases	Cost
INDUSTRY	\$246,780,115	10,119	\$62,781,420	1,198	\$2,716,350	607	\$17,475,318
Natural Resources & Mining	\$3,848,518	121	\$609,919	9	\$56,393	18	\$487,549
Construction	\$31,708,808	755	\$9,334,852	62	\$141,402	52	\$1,829,923
Manufacturing	\$9,402,384	306	\$1,841,693	34	\$82,277	52	\$1,179,535
Wholesale Trade	\$9,569,110	400	\$2,939,381	36	\$80,560	6	\$155,923
Retail Trade	\$21,269,502	1,143	\$4,893,241	210	\$441,370	34	\$774,373
Transportation & Warehousing	\$21,013,465	943	\$5,774,507	178	\$356,155	24	\$618,013
Utilities	\$1,613,659	52	\$335,971	1	\$558	6	\$136,528
Information	\$3,539,087	112	\$1,061,811	11	\$63,502	14	\$324,743
Finance, Ins, Real Estate, Rent, & Leasing	\$5,957,271	257	\$1,436,439	32	\$61,803	11	\$326,018
Professional, Scientific, & Technical Svcs.	\$3,218,738	93	\$706,946	9	\$35,398	5	\$164,500
Management of Companies & Enterprises	\$2,164,228	133	\$524,275	13	\$21,399	13	\$470,968
Administrative, Support, & Waste Mgmt.	\$21,340,350	818	\$5,313,848	82	\$164,274	7	\$243,918
Educational Services	\$3,176,554	13-0	\$525,548	24	\$50,132	6	\$150,226
Health Care & Social Assistance	\$20,207,234	910	\$5,454,007	146	\$368,003	24	\$596,883
Arts, Entertainment, & Recreation	\$3,840,841	187	\$652,759	20	\$28,599	5	\$124,411
Accommodation and Food Services	\$23,096,734	1,363	\$5,074,665	137	\$295,975	32	\$1,812,443
Other Services, except Public Admin.	\$7,675,953	337	\$1,698,684	35	\$71,603	11	\$181,672
Public Administration	\$47,745,322	2,042	\$14,371,842	157	\$391,793	140	\$3,478,798
Other	\$6,392,357	17	\$231,032	2	\$5,155	147	\$4,418,893

Cost is rounded to the nearest whole dollar and may not add to total.

Back Cases: Cost and Days Lost by Nature of Injury and Illness	2010				2011			
	Cases With Cost	Total Cost	Medical Cost	Days Lost	Cases With Cost	Total Cost	Medical Cost	Days Lost
Nature of Injury and Illness Total	5,274	\$57,516,026	\$25,501,867	218,612	5,158	\$55,506,678	\$23,862,605	224,754
Sprain, Strain	3,154	\$31,569,498	\$13,870,447	119,655	3,050	\$31,180,040	\$13,719,662	127,207
Back Pain	1,416	\$15,541,867	\$6,917,657	64,768	1,433	\$14,133,402	\$6,413,728	68,441
Traumatic Injury	363	\$5,447,293	\$2,880,523	21,353	350	\$4,959,145	\$2,162,339	18,428
Dislocation	42	\$858,348	\$350,015	3,895	45	\$703,776	\$319,309	2,682
Bruises, Contusions	103	\$824,364	\$370,828	3,082	81	\$923,218	\$373,781	2,671
Fracture	46	\$894,495	\$475,806	2,363	46	\$1,144,507	\$459,650	2,682
Multiple Traumatic Injuries/Disorders	10	\$131,097	\$16,744	166	14	\$39,635	\$14,450	94
Musculoskeletal System & Connective Tissue	29	\$491,605	\$187,175	1,772	31	\$425,067	\$164,965	1,739
Other Injuries and Illnesses	33	\$469,542	\$315,006	1,158	28	\$224,808	\$69,451	810
Non-classifiable	78	\$1,287,917	\$117,667	400	80	\$1,773,081	\$165,272	0

Cost is rounded to the nearest whole dollar and may not add to total.

Back Cases:

- Of all body parts, back cases with cost continued to exhibit the highest number of cases, most days lost and greatest total cost. This represented 5,158 cases or 18.0 percent and 224,754 days lost or 23.8 percent at a total cost of \$55.5 million or 22.5 percent.
- All nature of injury and illness categories except for bruises/contusions and fracture showed a decrease in total cost from the previous year.

PAYMENTS BY INDUSTRY

PERMANENT PARTIAL DISABILITY		DEATH		DISFIGUREMENT		VOCATIONAL REHABILITATION		ATTENDANT SERVICES		MEDICAL		
Cases	Cost	Cases	Cost	Cases	Cost	Cases	Cost	Cases	Cost	Cases	Cost	Cost per Case
2,761	\$51,633,658	89	\$1,977,826	1,781	\$908,737	1,065	\$5,494,389	9	\$281,268	26,452	\$103,511,150	\$3,913
45	\$1,094,703	4	\$84,994	34	\$24,430	20	\$60,914	0	\$0	374	\$1,429,616	\$3,823
286	\$6,716,030	17	\$518,878	195	\$128,576	173	\$1,055,527	3	\$74,910	2,061	\$11,908,709	\$5,778
126	\$2,121,992	1	\$4,388	75	\$56,601	49	\$247,020	0	\$0	839	\$3,868,879	\$4,611
108	\$1,708,385	4	\$77,929	69	\$38,321	66	\$396,226	0	\$0	942	\$4,172,384	\$4,429
258	\$4,097,360	2	\$64,422	165	\$72,070	112	\$490,884	0	\$0	2,803	\$10,435,783	\$3,723
256	\$4,686,177	11	\$398,056	167	\$75,945	122	\$490,215	0	\$0	2,006	\$8,614,397	\$4,294
11	\$265,771	0	\$0	17	\$11,273	5	\$31,124	1	\$19,776	198	\$812,657	\$4,104
59	\$379,897	2	\$38,358	34	\$16,455	19	\$96,012	0	\$0	356	\$1,558,309	\$4,377
70	\$1,055,762	2	\$43,888	35	\$12,830	25	\$104,193	1	\$1,510	739	\$2,914,829	\$3,944
35	\$692,023	1	\$43,983	25	\$12,480	17	\$121,560	0	\$0	351	\$1,441,848	\$4,108
20	\$276,077	1	\$29,479	18	\$6,200	10	\$29,113	0	\$0	272	\$806,717	\$2,966
238	\$5,064,828	12	\$173,540	131	\$85,139	108	\$454,707	0	\$0	1,907	\$9,840,096	\$5,160
49	\$858,841	2	\$86,597	34	\$13,000	5	\$62,163	0	\$0	477	\$1,430,048	\$2,998
212	\$4,550,879	3	\$46,124	108	\$50,009	98	\$620,913	0	\$0	2,355	\$8,520,416	\$3,618
40	\$771,713	2	\$41,227	29	\$21,925	12	\$63,952	0	\$0	526	\$2,136,254	\$4,061
317	\$5,478,628	1	\$13,586	215	\$92,553	95	\$486,078	1	\$23,840	3,447	\$9,818,965	\$2,849
90	\$1,655,815	2	\$29,405	53	\$30,275	38	\$159,420	0	\$0	920	\$3,849,079	\$4,184
526	\$9,854,621	17	\$256,117	371	\$155,206	86	\$466,428	2	\$71,872	5,667	\$18,698,645	\$3,300
15	\$304,154	5	\$26,856	6	\$5,450	5	\$57,940	1	\$89,360	212	\$1,253,517	\$5,913

2011 HAWAII WORKERS' COMPENSATION STATISTICS

PART OF BODY AFFECTED BY NATURE OF INJURY OR ILLNESS

Reported Cases	Part of Body	Eyes	Head, Neck, Excl. Eyes	Trunk, Excl. Back	Back	Fingers	Upper Extremity, Excl. Fingers	Lower Extremity	Body System	Multiple Body Parts	Non-classifiable
Nature of Injury or Illness	20,515	744	1,644	2,043	3,016	2,763	3,148	3,999	782	2,280	96
Traumatic Injuries	1,989	128	256	194	200	124	227	441	0	387	32
Fracture	615	0	61	57	16	137	145	188	0	11	0
Sprains, Strains	5,262	2	150	725	1,793	101	576	1,389	0	521	5
Cut, Laceration	2,824	46	424	8	8	1,512	552	250	0	22	2
Puncture, Excluding Bites	558	7	18	9	1	274	136	109	0	2	2
Abrasions, Scratches	342	72	49	8	1	17	72	78	0	45	0
Bruises, Contusions	1,843	25	237	243	58	178	307	595	0	197	3
Foreign Bodies	278	278	0	0	0	0	0	0	0	0	0
Heat Burns	449	9	25	12	2	44	264	51	0	42	0
Multiple Injuries/Disorders	618	8	47	24	8	32	52	119	0	328	0
Back Pain	882	0	0	0	882	0	0	0	0	0	0
Pain, Excluding Back	1,996	15	112	435	0	149	438	575	0	272	0
Carpal Tunnel	75	0	0	0	0	0	75	0	0	0	0
Musculoskeletal	97	0	1	18	15	7	41	11	0	4	0
Skin Disorders	103	0	3	6	2	10	50	2	0	29	1
Symptoms	319	35	32	29	0	2	10	9	178	23	1
Mental Disorders	318	0	0	0	0	0	0	0	318	0	0
Exposure	204	23	18	2	0	0	9	0	135	12	5
Other Injuries/Illnesses	1,710	96	211	273	30	176	193	182	150	384	15
Nonclassifiable	33	0	0	0	0	0	1	0	1	1	30

EVENT OR EXPOSURE BY SOURCE OF INJURY OR ILLNESS

Reported Cases	Event or Exposure	Struck By or Struck Against	Caught In, Under, or Between	Rubbed or Abraded	Fall	Bodily Reaction	Overexertion	Contact With Temp. Extremes	Exposure (Harmful Substance)	Highway Motor Vehicle Accidents	Other
Source of Injury or Illness	20,515	5,050	653	347	3,437	1,737	4,604	453	1,288	450	2,496
Chemical, Chemical Product	413	5	0	0	0	0	0	13	392	0	3
Containers	2,843	671	74	3	82	0	1,894	40	0	0	79
Furniture, Fixtures	1,214	532	64	4	126	0	452	2	1	0	33
Machinery	1,260	498	146	10	53	0	364	79	11	2	97
Building Materials	515	262	20	14	21	0	173	1	1	0	23
Vehicle, Mobile Eqmt Parts	177	49	10	1	5	0	99	0	0	0	13
Other Parts and Materials	525	358	17	3	8	0	93	6	1	0	39
Plants, Animals, Minerals	1,000	169	6	4	32	0	66	157	328	0	238
Person, Injured Worker	2,500	2	0	1	0	1,737	17	0	243	0	500
Person, Other	1,271	81	19	0	3	0	409	0	71	0	688
Floors, Walkways, Ground	2,936	48	7	2	2,860	0	8	0	0	0	11
Structures, Other Surfaces	702	378	88	1	133	0	81	0	0	0	21
Handtools (Nonpowered)	1,216	985	27	2	4	0	157	3	0	0	38
Handtools (Powered)	309	159	21	2	4	0	89	9	11	0	14
Other Tools, Instruments, Equipment	781	279	21	5	27	0	269	4	139	0	37
Highway Vehicle, Motorized	897	158	67	4	35	0	64	2	0	442	125
Nonpowered Plant, Vehicles	346	120	38	1	18	0	162	0	0	0	7
Other Vehicles	333	73	16	0	13	0	42	2	0	6	181
Scrap, Waste, Debris	477	153	0	289	3	0	13	1	11	0	7
Other Sources	800	70	12	1	10	0	152	134	79	0	342

2011 HAWAII WORKERS' COMPENSATION STATISTICS

STATE	REPORTED		PROCESSED		WITH COST		COST		DAYS LOST	
ISLAND	20,515	100.0%	39,115	100.0%	28,686	100.0%	\$246,780,115	100.0%	945,665	100.0%
Oahu	13,770	67.1	25,744	65.8	18,993	66.2	166,181,078	67.3	621,048	65.7
East Hawaii	1,119	5.5	2,766	7.1	1,994	7.0	17,856,188	7.2	84,391	8.9
West Hawaii	1,424	6.9	2,708	6.9	1,999	7.0	19,421,895	7.9	83,347	8.8
Maui	2,740	13.4	5,222	13.4	3,880	13.5	29,981,637	12.2	109,881	11.6
Molokai	77	0.4	166	0.4	113	0.4	1,006,360	0.4	4,401	0.5
Lanai	89	0.4	148	0.4	72	0.3	544,632	0.2	1,748	0.2
Kauai	1,296	6.3	2,361	6.0	1,635	5.7	11,788,325	4.8	40,849	4.3
INDUSTRY	20,515	100.0%	39,115	100.0%	28,686	100.0%	\$246,780,115	100.0%	945,665	100.0%
Natural Resources & Mining	280	1.4	589	1.5	425	1.5	3,848,518	1.6	13,311	1.4
Construction	1,327	6.5	2,742	7.0	2,218	7.7	31,708,808	12.9	110,826	11.7
Manufacturing	616	3.0	1,161	3.0	926	3.2	9,402,384	3.8	29,149	3.1
Wholesale Trade	663	3.2	1,256	3.2	1,008	3.5	9,569,110	3.9	48,016	5.1
Retail Trade	2,625	12.8	4,398	11.2	3,009	10.5	21,269,502	8.6	92,730	9.8
Transportation & Warehousing	1,350	6.6	2,771	7.1	2,197	7.7	21,013,465	8.5	82,093	8.7
Utilities	109	0.5	316	0.8	213	0.7	1,613,659	0.7	3,614	0.4
Information	239	1.2	523	1.3	387	1.4	3,539,087	1.4	11,117	1.2
Fin, Ins, Real Est, Rent, & Leasing	636	3.1	1,057	2.7	786	2.7	5,957,271	2.4	24,377	2.6
Professional, Scientific, & Tech.	284	1.4	495	1.3	373	1.3	3,218,738	1.3	10,254	1.1
Management of Companies & Entrpr.	350	1.7	509	1.3	310	1.1	2,164,228	0.9	8,076	0.9
Administrative, Support, & Waste	1,530	7.5	2,634	6.7	2,038	7.1	21,340,350	8.7	93,446	9.9
Educational Services	339	1.7	647	1.7	500	1.7	3,176,554	1.3	7,941	0.8
Health Care & Social Assistance	1,923	9.4	3,337	8.5	2,497	8.7	20,207,234	8.2	86,794	9.2
Arts, Entertainment, & Recreation	450	2.2	739	1.9	560	2.0	3,840,841	1.6	12,568	1.3
Accommodation and Food Services	3,283	16.0	5,305	13.6	3,724	13.0	23,096,734	9.4	91,271	9.7
Other Services, except Public Admin.	705	3.4	1,283	3.3	977	3.4	7,675,953	3.1	31,936	3.4
Public Administration	3,779	18.4	8,985	23.0	6,208	21.6	47,745,322	19.4	183,234	19.4
Other	27	0.1	368	0.9	330	1.2	6,392,357	2.6	4,912	0.5
TYPE OF INSURANCE	20,515	100.0%	39,115	100.0%	28,686	100.0%	\$246,780,115	100.0%	945,665	100.0%
Carrier	13,808	67.3	24,665	63.1	18,238	63.6	150,507,890	61.0	622,190	65.8
Self-Insured: Private & Captive	3,011	14.7	5,626	14.4	4,392	15.3	35,776,976	14.5	143,337	15.2
Self-Insured: Government	3,696	18.0	8,824	22.6	6,056	21.1	43,959,240	17.8	180,138	19.1
State of Hawaii	1,884	9.2	4,988	12.8	3,285	11.5	22,782,765	9.2	108,690	11.5
City & County of Honolulu	1,340	6.5	2,712	6.9	1,908	6.7	15,895,381	6.4	50,141	5.3
Hawaii County	143	0.7	472	1.2	319	1.1	2,095,118	0.9	6,979	0.7
Maui County	227	1.1	450	1.2	388	1.4	2,224,185	0.9	10,803	1.1
Kauai County	102	0.5	202	0.5	156	0.5	961,791	0.4	3,525	0.4
Special Compensation Fund	INA	--	INA	--	INA	--	16,536,009	6.7	INA	--
OCCUPATION	20,515	100.0%	39,115	100.0%	28,686	100.0%	\$246,780,115	100.0%	945,665	100.0%
Executive, Admin. & Managerial	709	3.5	1,419	3.6	1,021	3.6	9,238,183	3.7	26,590	2.8
Professional Specialty	1,545	7.5	3,260	8.3	2,265	7.9	16,126,940	6.5	46,205	4.9
Technical Support	462	2.3	856	2.2	619	2.2	4,801,198	2.0	16,708	1.8
Sales	1,520	7.4	2,581	6.6	1,736	6.1	14,142,347	5.7	57,156	6.0
Administrative Support	1,364	6.7	2,789	7.1	1,865	6.5	13,288,257	5.4	51,065	5.4
Services	6,732	32.8	12,062	30.8	8,601	30.0	61,232,642	24.8	267,299	28.3
Agricultural, Forestry & Fishing	1,025	5.0	1,948	5.0	1,463	5.1	11,214,562	4.5	54,642	5.8
Mechanic, Repairer	1,210	5.9	2,303	5.9	1,786	6.2	15,815,598	6.4	49,440	5.2
Construction Trades	1,280	6.2	2,612	6.7	2,098	7.3	29,912,958	12.1	100,212	10.6
Precision Production	325	1.6	607	1.6	456	1.6	3,020,513	1.2	13,668	1.5
Operator, Fabricator, Inspector	308	1.5	616	1.6	490	1.7	4,399,596	1.8	13,987	1.5
Transportation, Material Moving	1,360	6.6	2,947	7.5	2,353	8.2	26,013,821	10.5	106,500	11.3
Handler, Helper, Laborer	2,523	12.3	4,641	11.9	3,571	12.5	31,230,202	12.7	135,758	14.4
Nonclassifiable	152	0.7	474	1.2	362	1.3	6,343,298	2.6	6,435	0.7
SEX	20,515	100.0%	39,115	100.0%	28,686	100.0%	\$246,780,115	100.0%	945,665	100.0%
Male	12,330	60.1	23,507	60.1	17,705	61.7	163,599,906	66.3	609,793	64.5
Female	8,185	39.9	15,608	39.9	10,981	38.3	83,180,209	33.7	335,872	35.5

Notes: Cost and percent totals may not add due to rounding.

2011 HAWAII WORKERS' COMPENSATION STATISTICS

STATE	REPORTED		PROCESSED		WITH COST		COST		DAYS LOST	
PART OF BODY	20,515	100.0%	39,115	100.0%	28,686	100.0%	\$246,780,115	100.0%	945,665	100.0%
Ears	70	0.3	168	0.4	113	0.4	366,792	0.2	526	0.1
Face, Excluding Eyes, Ears	631	3.1	936	2.4	665	2.3	2,698,408	1.1	10,009	1.1
Eyes	744	3.6	1,095	2.8	782	2.7	1,480,008	0.6	2,534	0.3
Head, Excluding Ears, Face, Eyes	671	3.3	1,128	2.9	798	2.8	6,085,600	2.5	20,188	2.1
Neck	272	1.3	607	1.6	472	1.7	5,129,477	2.1	17,141	1.8
Trunk, Excluding Back	2,043	10.0	4,226	10.8	3,166	11.0	35,505,494	14.4	141,952	15.0
<i>Shoulder</i>	977	4.8	2,225	5.7	1,741	6.1	22,578,627	9.2	91,547	9.7
<i>Chest</i>	353	1.7	628	1.6	416	1.5	3,312,200	1.3	8,437	0.9
<i>Abdomen</i>	123	0.6	217	0.6	132	0.5	655,291	0.3	3,511	0.4
<i>Pelvic Region</i>	275	1.3	520	1.3	386	1.4	4,010,847	1.6	17,037	1.8
<i>Trunk, Multiple/Unspecified</i>	315	1.5	636	1.6	491	1.7	4,948,529	2.0	21,420	2.3
Back (Spine/Spinal Cord)	3,016	14.7	6,589	16.9	5,158	18.0	55,506,678	22.5	224,754	23.8
Arms	1,109	5.4	1,956	5.0	1,416	4.9	10,063,466	4.1	40,010	4.2
Wrists	702	3.4	1,364	3.5	953	3.3	7,254,334	2.9	30,163	3.2
Hands, Excluding Fingers	1,010	4.9	1,571	4.0	1,105	3.9	4,069,913	1.7	17,258	1.8
Fingers	2,763	13.5	4,139	10.6	3,081	10.7	8,034,804	3.3	25,789	2.7
Upper Extremities, Multiple	327	1.6	615	1.6	431	1.5	3,421,001	1.4	12,692	1.3
Legs	2,192	10.7	4,409	11.3	3,347	11.7	32,095,348	13.0	130,529	13.8
Ankles	811	4.0	1,374	3.5	1,062	3.7	6,341,518	2.6	29,547	3.1
Feet, Excl. Toes	591	2.9	1,046	2.7	782	2.7	4,496,804	1.8	20,621	2.2
Toes	245	1.2	403	1.0	288	1.0	695,091	0.3	3,489	0.4
Lower Extremities, Multiple	160	0.8	347	0.9	260	0.9	2,079,207	0.8	7,973	0.8
Body Systems	782	3.8	1,639	4.2	670	2.3	6,674,697	2.7	25,232	2.7
Multiple Body Parts	2,280	11.1	5,207	13.3	3,932	13.7	50,382,816	20.4	178,268	18.9
Nonclassifiable	96	0.5	296	0.8	205	0.7	4,398,659	1.8	6,990	0.7
AVERAGE WEEKLY WAGE	20,515	100.0%	39,115	100.0%	28,686	100.0%	\$246,780,115	100.0%	945,665	100.0%
\$01-\$200	698	3.4	1,375	3.5	1,019	3.6	8,108,411	3.3	21,289	2.3
\$200.01-\$400	2,580	12.6	4,861	12.4	3,537	12.3	25,442,316	10.3	115,993	12.3
\$400.01-\$600	3,403	16.6	6,399	16.4	4,720	16.5	39,905,107	16.2	164,712	17.4
\$600.01-\$800	3,466	16.9	6,798	17.4	5,009	17.5	43,356,567	17.6	194,487	20.6
\$800.01-\$1000	1,986	9.7	4,029	10.3	3,048	10.6	29,180,452	11.8	107,801	11.4
Over \$1000	3,260	15.9	6,133	15.7	4,533	15.8	43,283,845	17.5	133,061	14.1
Information Not Available	5,122	25.0	9,520	24.3	6,820	23.8	57,503,417	23.3	208,322	22.0
SOURCE OF INJURY OR ILLNESS	20,515	100.0%	39,115	100.0%	28,686	100.0%	\$246,780,115	100.0%	945,665	100.0%
Chemical, Chemical Product	413	2.0	625	1.6	387	1.3	1,166,505	0.5	3,841	0.4
Containers	2,843	13.9	5,306	13.6	4,071	14.2	33,771,993	13.7	154,358	16.3
Furniture, Fixtures	1,214	5.9	2,009	5.1	1,452	5.1	11,140,329	4.5	46,976	5.0
Machinery	1,260	6.1	2,202	5.6	1,663	5.8	12,824,548	5.2	48,862	5.2
Building Materials	515	2.5	909	2.3	718	2.5	6,788,215	2.8	25,186	2.7
Vehicle, Mobile Equipment Parts	177	0.9	338	0.9	273	1.0	2,623,746	1.1	12,344	1.3
Other Parts and Materials	525	2.6	918	2.4	730	2.5	4,569,144	1.9	15,662	1.7
Plants, Animals, Minerals	1,000	4.9	1,581	4.0	1,034	3.6	5,127,875	2.1	18,902	2.0
Person, Injured Worker	2,500	12.2	5,537	14.2	3,645	12.7	35,825,100	14.5	143,291	15.2
Person, Other than Injured Worker	1,271	6.2	2,457	6.3	1,766	6.2	14,104,890	5.7	64,453	6.8
Floors, Walkways, Ground	2,936	14.3	6,126	15.7	4,746	16.5	50,594,245	20.5	181,984	19.2
Structures, Other Surfaces	702	3.4	1,236	3.2	930	3.2	7,058,534	2.9	29,605	3.1
Handtools (Nonpowered)	1,216	5.9	1,869	4.8	1,423	5.0	5,469,743	2.2	22,695	2.4
Handtools (Powered)	309	1.5	520	1.3	420	1.5	2,599,344	1.1	8,254	0.9
Other Tools, Instruments, Equipment	781	3.8	1,351	3.5	985	3.4	6,120,064	2.5	23,142	2.5
Highway Vehicle, Motorized	897	4.4	2,129	5.4	1,637	5.7	19,431,610	7.9	62,010	6.6
Nonpowered Plant Vehicles	346	1.7	663	1.7	496	1.7	4,506,066	1.8	21,282	2.3
Other Vehicles	333	1.6	666	1.7	548	1.9	5,698,489	2.3	21,669	2.3
Scrap, Waste, Debris	477	2.3	736	1.9	513	1.8	1,263,843	0.5	3,532	0.4
Other Sources	800	3.9	1,937	5.0	1,249	4.4	16,095,832	6.5	37,617	4.0
MARITAL STATUS	20,515	100.0%	39,115	100.0%	28,686	100.0%	\$246,780,115	100.0%	945,665	100.0%
Married	9,581	46.7	19,327	49.4	14,398	50.2	132,072,967	53.5	471,132	49.8
Single	10,228	49.9	18,512	47.3	13,416	46.8	107,678,208	43.6	451,248	47.7
Information Not Available	706	3.4	1,276	3.3	872	3.0	7,028,940	2.9	23,285	2.5

Notes: Cost and percent totals may not add due to rounding.

2011 HAWAII WORKERS' COMPENSATION STATISTICS

STATE	REPORTED		PROCESSED		WITH COST		COST		DAYS LOST	
	20,515	100.0%	39,115	100.0%	28,686	100.0%	\$246,780,115	100.0%	945,665	100.0%
EVENT OR EXPOSURE	20,515	100.0%	39,115	100.0%	28,686	100.0%	\$246,780,115	100.0%	945,665	100.0%
Struck Against	1,790	8.7	2,681	6.9	1,898	6.6	7,356,721	3.0	28,107	3.0
Struck By	3,260	15.9	5,165	13.2	3,919	13.7	17,013,597	6.9	62,689	6.6
Caught In, Under, or Between	653	3.2	1,060	2.7	827	2.9	5,057,283	2.1	20,369	2.2
Rubbed or Abraded	347	1.7	535	1.4	382	1.3	774,456	0.3	1,871	0.2
Other Contact with Object, Equipment	334	1.6	473	1.2	325	1.1	1,226,590	0.5	4,527	0.5
Falls (From Elevation)	977	4.8	2,265	5.8	1,838	6.4	24,535,120	9.9	85,331	9.0
Falls (To Same Level)	2,369	11.6	4,630	11.8	3,515	12.3	30,823,129	12.5	118,088	12.5
Falls (Other)	91	0.4	168	0.4	132	0.5	1,741,471	0.7	5,329	0.6
Bodily Reaction	1,737	8.5	3,549	9.1	2,647	9.2	23,774,215	9.6	95,775	10.1
Overexertion	4,604	22.4	9,636	24.6	7,505	26.2	77,839,124	31.5	340,460	36.0
Repetitive Motion	404	2.0	1,017	2.6	616	2.1	6,456,714	2.6	27,323	2.9
Heart Attacks and Strokes	28	0.1	91	0.2	24	0.1	607,917	0.3	977	0.1
Contact (Electrical)	46	0.2	83	0.2	63	0.2	914,300	0.4	1,473	0.2
Contact (Temperature Extremes)	453	2.2	664	1.7	436	1.5	1,140,705	0.5	4,695	0.5
Exposure (Noise)	19	0.1	80	0.2	47	0.2	229,054	0.1	365	0.0
Exposure (Harmful Substance)	1,288	6.3	2,153	5.5	1,059	3.7	4,373,114	1.8	20,358	2.2
Accidents (Highway Vehicle)	450	2.2	1,174	3.0	888	3.1	11,682,649	4.7	34,132	3.6
Accidents (Non-Highway Vehicle)	127	0.6	331	0.9	270	0.9	3,670,749	1.5	14,447	1.5
Accidents (Other Transportation)	186	0.9	416	1.1	333	1.2	5,184,886	2.1	17,295	1.8
Explosions	37	0.2	62	0.2	49	0.2	623,318	0.3	1,269	0.1
Assaults, Violent Acts	898	4.4	1,698	4.3	1,190	4.2	8,717,997	3.5	39,345	4.2
Other Events/Exposures	109	0.5	285	0.7	174	0.6	2,820,351	1.1	2,995	0.3
Nonclassifiable	308	1.5	899	2.3	549	1.9	10,216,655	4.1	18,445	2.0
NATURE OF INJURY OR ILLNESS	20,515	100.0%	39,115	100.0%	28,686	100.0%	\$246,780,115	100.0%	945,665	100.0%
Traumatic Injuries	1,989	9.7	3,845	9.8	2,826	9.9	28,727,523	11.6	116,539	12.3
Fracture	615	3.0	1,551	4.0	1,299	4.5	19,417,275	7.9	58,777	6.2
Sprains, Strains	5,262	25.7	11,080	28.3	8,690	30.3	83,505,920	33.8	352,349	37.3
Cut, Laceration	2,824	13.8	4,103	10.5	3,075	10.7	8,164,079	3.3	24,318	2.6
Puncture, Excluding Bites	558	2.7	801	2.1	599	2.1	876,098	0.4	2,850	0.3
Abrasions, Scratches	342	1.7	523	1.3	338	1.2	1,327,540	0.5	4,030	0.4
Bruises, Contusions	1,843	9.0	3,061	7.8	2,201	7.7	13,246,565	5.4	51,038	5.4
Foreign Bodies	278	1.4	399	1.0	282	1.0	513,749	0.2	1,134	0.1
Heat Burns	449	2.2	671	1.7	444	1.6	1,990,272	0.8	5,292	0.6
Multiple Injuries/Disorders	618	3.0	1,204	3.1	926	3.2	9,613,772	3.9	29,876	3.2
Back Pain	882	4.3	1,849	4.7	1,433	5.0	14,133,402	5.7	68,441	7.2
Pain, Excluding Back	1,996	9.7	4,045	10.3	2,905	10.1	26,623,505	10.8	114,919	12.2
Carpal Tunnel	75	0.4	221	0.6	125	0.4	1,254,996	0.5	6,607	0.7
Musculoskeletal	97	0.5	270	0.7	178	0.6	2,496,947	1.0	10,750	1.1
Skin Disorders	103	0.5	163	0.4	80	0.3	315,585	0.1	1,176	0.1
Symptoms	319	1.6	519	1.3	220	0.8	1,142,845	0.5	3,477	0.4
Mental Disorders	318	1.6	842	2.2	302	1.1	4,033,078	1.6	21,059	2.2
Exposure	204	1.0	236	0.6	94	0.3	42,558	0.0	67	0.0
Other Injuries/Illnesses	1,710	8.3	3,326	8.5	2,328	8.1	22,155,329	9.0	69,042	7.3
Nonclassifiable	33	0.2	406	1.0	341	1.2	7,199,077	2.9	3,924	0.4
AGE	20,515	100.0%	39,115	100.0%	28,686	100.0%	\$246,780,115	100.0%	945,665	100.0%
Under 18	54	0.3	83	0.2	54	0.2	668,347	0.3	504	0.1
18-24	2,184	10.7	3,234	8.3	2,296	8.0	8,979,991	3.6	37,903	4.0
25-34	4,488	21.9	7,480	19.1	5,490	19.1	38,414,843	15.6	157,331	16.6
35-44	4,462	21.8	8,952	22.9	6,633	23.1	62,311,926	25.3	229,544	24.3
45-54	5,067	24.7	10,925	27.9	8,051	28.1	81,132,653	32.9	307,537	32.5
55-64	3,461	16.9	6,939	17.7	5,050	17.6	45,505,478	18.4	173,662	18.4
Over 64	742	3.6	1,337	3.4	1,004	3.5	7,942,812	3.2	31,690	3.4
Information Not Available	57	0.3	165	0.4	108	0.4	1,824,065	0.7	7,494	0.8

Notes: Cost and percent totals may not add due to rounding.

2011 HAWAII WORKERS' COMPENSATION STATISTICS

OAHU	REPORTED		PROCESSED		WITH COST		COST		DAYS LOST	
INDUSTRY	13,770	100.0%	25,744	100.0%	18,993	100.0%	\$166,181,078	100.0%	621,048	100.0%
Natural Resources & Mining	79	0.6	148	0.6	114	0.6	1,138,334	0.7	3,481	0.6
Construction	990	7.2	1,903	7.4	1,545	8.1	20,876,502	12.6	73,547	11.8
Manufacturing	477	3.5	890	3.5	703	3.7	6,863,685	4.1	22,079	3.6
Wholesale Trade	497	3.6	914	3.6	729	3.8	6,928,761	4.2	31,326	5.0
Retail Trade	1,734	12.6	2,821	11.0	1,953	10.3	13,622,750	8.2	59,861	9.6
Transportation & Warehousing	1,030	7.5	2,067	8.0	1,657	8.7	16,114,128	9.7	58,180	9.4
Utilities	59	0.4	182	0.7	129	0.7	847,709	0.5	2,153	0.4
Information	192	1.4	417	1.6	315	1.7	2,839,561	1.7	8,860	1.4
Fin, Ins, Real Est, Rent, & Leasing	422	3.1	720	2.8	531	2.8	4,135,688	2.5	16,513	2.7
Professional, Scientific, & Tech.	215	1.6	358	1.4	266	1.4	2,153,581	1.3	5,675	0.9
Management of Companies & Entrpr.	207	1.5	299	1.2	182	1.0	1,290,277	0.8	4,597	0.7
Administrative, Support, & Waste	1,007	7.3	1,686	6.6	1,317	6.9	12,657,130	7.6	56,721	9.1
Educational Services	236	1.7	458	1.8	358	1.9	2,171,697	1.3	5,638	0.9
Health Care & Social Assistance	1,436	10.4	2,459	9.6	1,868	9.8	15,346,369	9.2	63,823	10.3
Arts, Entertainment, & Recreation	304	2.2	500	1.9	373	2.0	2,146,870	1.3	8,417	1.4
Accommodation and Food Services	1,825	13.3	2,867	11.1	2,044	10.8	13,522,568	8.1	52,325	8.4
Other Services, except Public Admin.	491	3.6	879	3.4	669	3.5	5,135,279	3.1	19,744	3.2
Public Administration	2,554	18.5	5,937	23.1	4,026	21.2	33,831,548	20.4	124,087	20.0
Other	15	0.1	239	0.9	214	1.1	4,558,641	2.7	4,021	0.6
PART OF BODY	13,770	100.0%	25,744	100.0%	18,993	100.0%	\$166,181,078	100.0%	621,048	100.0%
Ears	42	0.3	107	0.4	67	0.4	227,149	0.1	418	0.1
Face, Excluding Eyes, Ears	443	3.2	646	2.5	466	2.5	2,145,148	1.3	8,200	1.3
Eyes	482	3.5	710	2.8	512	2.7	956,456	0.6	2,000	0.3
Head, Excluding Ears, Face, Eyes	470	3.4	768	3.0	533	2.8	4,059,833	2.4	12,526	2.0
Neck	189	1.4	400	1.6	316	1.7	3,393,985	2.0	13,228	2.1
Trunk, Excluding Back	1,362	9.9	2,735	10.6	2,065	10.9	24,218,699	14.6	94,065	15.2
Back (Spine/Spinal Cord)	2,011	14.6	4,253	16.5	3,351	17.6	36,241,859	21.8	139,947	22.5
Arms	756	5.5	1,317	5.1	956	5.0	7,777,723	4.7	29,598	4.8
Wrists	502	3.7	913	3.6	640	3.4	4,350,654	2.6	19,863	3.2
Hands, Excluding Fingers	697	5.1	1,054	4.1	747	3.9	2,780,936	1.7	9,726	1.6
Fingers	1,842	13.4	2,744	10.7	2,049	10.8	4,897,568	3.0	15,619	2.5
Upper Extremities, Multiple	234	1.7	426	1.7	292	1.5	2,215,228	1.3	7,930	1.3
Legs	1,452	10.5	2,919	11.3	2,224	11.7	21,742,391	13.1	84,644	13.6
Ankles	534	3.9	893	3.5	703	3.7	4,225,711	2.5	18,939	3.1
Feet, Excluding Toes	419	3.0	725	2.8	542	2.9	3,277,838	2.0	14,237	2.3
Toes	170	1.2	273	1.1	196	1.0	507,235	0.3	2,474	0.4
Lower Extremities, Multiple	115	0.8	246	1.0	186	1.0	1,409,485	0.9	5,733	0.9
Body Systems	467	3.4	979	3.8	393	2.1	4,345,135	2.6	15,016	2.4
Multiple Body Parts	1,513	11.0	3,426	13.3	2,615	13.8	34,283,138	20.6	121,424	19.6
Nonclassifiable	70	0.5	210	0.8	140	0.7	3,124,907	1.9	5,461	0.9
SOURCE OF INJURY OR ILLNESS	13,770	100.0%	25,744	100.0%	18,993	100.0%	\$166,181,078	100.0%	621,048	100.0%
Chemical, Chemical Product	268	2.0	386	1.5	239	1.3	712,151	0.4	1,972	0.3
Containers	1,928	14.0	3,466	13.5	2,699	14.2	22,258,660	13.4	101,267	16.3
Furniture, Fixtures	791	5.7	1,309	5.1	953	5.0	7,638,578	4.6	28,361	4.6
Machinery	841	6.1	1,429	5.6	1,086	5.7	8,378,301	5.0	30,134	4.9
Building Materials	355	2.6	607	2.4	480	2.5	4,299,058	2.6	14,751	2.4
Vehicle, Mobile Equipment Parts	115	0.8	212	0.8	174	0.9	1,836,739	1.1	8,717	1.4
Other Parts and Materials	388	2.8	642	2.5	511	2.7	3,179,825	1.9	10,158	1.6
Plants, Animals, Minerals	592	4.3	908	3.5	575	3.0	3,128,797	1.9	7,951	1.3
Person, Injured Worker	1,647	12.0	3,626	14.1	2,410	12.7	24,073,007	14.5	93,333	15.0
Person, Other than Injured Worker	911	6.6	1,727	6.7	1,244	6.6	10,699,733	6.4	49,112	7.9
Floors, Walkways, Ground	1,933	14.0	4,002	15.6	3,120	16.4	33,022,788	19.9	119,000	19.2
Structures, Other Surfaces	488	3.5	821	3.2	617	3.3	4,708,697	2.8	19,010	3.1
Handtools (Nonpowered)	789	5.7	1,177	4.6	908	4.8	3,891,306	2.3	14,696	2.4
Handtools (Powered)	198	1.4	330	1.3	261	1.4	1,603,163	1.0	4,862	0.8
Other Tools, Instruments, Equipment	546	4.0	947	3.7	680	3.6	4,620,029	2.8	17,252	2.8
Highway Vehicle, Motorized	656	4.8	1,485	5.8	1,163	6.1	14,332,472	8.6	43,235	7.0
Nonpowered Plant Vehicles	247	1.8	457	1.8	338	1.8	3,181,583	1.9	15,317	2.5
Other Vehicles	237	1.7	439	1.7	361	1.9	3,520,985	2.1	14,723	2.4
Scrap, Waste, Debris	307	2.2	483	1.9	337	1.8	558,912	0.3	3,047	0.5
Other Sources	533	3.9	1,291	5.0	837	4.4	10,536,294	6.3	24,150	3.9

Notes: Cost and percent totals may not add due to rounding.

2011 HAWAII WORKERS' COMPENSATION STATISTICS

OAHU	REPORTED		PROCESSED		WITH COST		COST		DAYS LOST	
OCCUPATION	13,770	100.0%	25,744	100.0%	18,993	100.0%	\$166,181,078	100.0%	621,048	100.0%
Executive, Admin. & Managerial	479	3.5	953	3.7	699	3.7	5,698,428	3.4	14,555	2.3
Professional Specialty	1,116	8.1	2,265	8.8	1,573	8.3	11,289,425	6.8	31,143	5.0
Technical Support	306	2.2	551	2.1	402	2.1	3,094,469	1.9	12,253	2.0
Sales	998	7.3	1,657	6.4	1,136	6.0	9,505,848	5.7	40,753	6.6
Administrative Support	943	6.9	1,905	7.4	1,288	6.8	9,685,245	5.8	36,732	5.9
Services	4,410	32.0	7,868	30.6	5,577	29.4	41,702,526	25.1	179,294	28.9
Agricultural, Forestry & Fishing	504	3.7	936	3.6	718	3.8	5,619,371	3.4	23,916	3.9
Mechanic, Repairer	809	5.9	1,496	5.8	1,157	6.1	10,638,094	6.4	33,114	5.3
Construction Trades	894	6.5	1,759	6.8	1,432	7.5	19,068,425	11.5	62,544	10.1
Precision Production	214	1.6	399	1.6	291	1.5	2,046,518	1.2	8,069	1.3
Operator, Fabricator, Inspector	221	1.6	428	1.7	348	1.8	3,110,016	1.9	9,918	1.6
Transportation, Material Moving	1,016	7.4	2,096	8.1	1,699	9.0	19,133,334	11.5	72,381	11.7
Handler, Helper, Laborer	1,766	12.8	3,131	12.2	2,438	12.8	21,316,556	12.8	91,237	14.7
Nonclassifiable	94	0.7	300	1.2	235	1.2	4,272,823	2.6	5,139	0.8
NATURE OF INJURY OR ILLNESS	13,770	100.0%	25,744	100.0%	18,993	100.0%	\$166,181,078	100.0%	621,048	100.0%
Traumatic Injuries	1,411	10.3	2,643	10.3	1,946	10.3	19,938,953	12.0	78,294	12.6
Fracture	396	2.9	965	3.8	820	4.3	11,703,692	7.0	34,275	5.5
Sprains, Strains	3,483	25.3	7,176	27.9	5,693	30.0	56,089,859	33.8	229,081	36.9
Cut, Laceration	1,894	13.8	2,714	10.5	2,025	10.7	5,295,223	3.2	15,098	2.4
Puncture, Excluding Bites	380	2.8	534	2.1	399	2.1	595,006	0.4	1,778	0.3
Abrasions, Scratches	226	1.6	346	1.3	222	1.2	968,984	0.6	3,020	0.5
Bruises, Contusions	1,263	9.2	2,035	7.9	1,490	7.8	9,369,848	5.6	35,375	5.7
Foreign Bodies	168	1.2	248	1.0	178	0.9	229,278	0.1	1,079	0.2
Heat Burns	304	2.2	441	1.7	288	1.5	859,406	0.5	3,674	0.6
Multiple Injuries/Disorders	385	2.8	750	2.9	573	3.0	6,225,420	3.8	19,234	3.1
Back Pain	598	4.3	1,232	4.8	954	5.0	9,678,842	5.8	45,677	7.4
Pain, Excluding Back	1,418	10.3	2,829	11.0	2,038	10.7	19,165,999	11.5	82,179	13.2
Carpal Tunnel	55	0.4	153	0.6	88	0.5	846,343	0.5	4,221	0.7
Musculoskeletal	75	0.5	194	0.8	123	0.7	1,755,768	1.1	7,080	1.1
Skin Disorders	72	0.5	108	0.4	55	0.3	259,452	0.2	638	0.1
Symptoms	196	1.4	316	1.2	132	0.7	783,696	0.5	1,591	0.3
Mental Disorders	174	1.3	485	1.9	184	1.0	2,606,749	1.6	12,093	2.0
Exposure	152	1.1	175	0.7	51	0.3	27,648	0.0	57	0.0
Other Injuries/Illnesses	1,094	7.9	2,109	8.2	1,487	7.8	14,336,649	8.6	43,530	7.0
Nonclassifiable	26	0.2	291	1.1	247	1.3	5,444,263	3.3	3,074	0.5
EVENT OR EXPOSURE	13,770	100.0%	25,744	100.0%	18,993	100.0%	\$166,181,078	100.0%	621,048	100.0%
Struck Against	1,213	8.8	1,777	6.9	1,248	6.6	4,567,685	2.8	17,960	2.9
Struck By	2,202	16.0	3,408	13.2	2,599	13.7	11,246,783	6.8	40,170	6.5
Caught In, Under, or Between	438	3.2	690	2.7	532	2.8	3,348,955	2.0	13,350	2.2
Rubbed or Abraded	215	1.6	336	1.3	241	1.3	317,904	0.2	1,287	0.2
Other Contact with Object, Equip.	221	1.6	314	1.2	222	1.2	894,812	0.5	3,038	0.5
Falls (From Elevation)	653	4.7	1,476	5.7	1,198	6.3	15,574,857	9.4	54,190	8.7
Falls (To Same Level)	1,571	11.4	3,067	11.9	2,355	12.4	21,184,739	12.8	79,141	12.7
Falls (Other)	61	0.4	114	0.4	95	0.5	1,422,514	0.9	4,069	0.7
Bodily Reaction	1,141	8.3	2,339	9.1	1,758	9.3	16,114,245	9.7	64,030	10.3
Overexertion	3,118	22.6	6,321	24.6	4,974	26.2	52,698,290	31.7	220,968	35.6
Repetitive Motion	285	2.1	701	2.7	420	2.2	4,411,777	2.7	18,011	2.9
Heart Attacks and Strokes	23	0.2	59	0.2	15	0.1	377,526	0.2	491	0.1
Contact (Electrical)	27	0.2	47	0.2	34	0.2	370,555	0.2	1,013	0.2
Contact (Temperature Extremes)	305	2.2	437	1.7	287	1.5	778,478	0.5	3,615	0.6
Exposure (Noise)	14	0.1	57	0.2	28	0.2	133,097	0.1	365	0.1
Exposure (Harmful Substance)	794	5.8	1,308	5.1	626	3.3	2,725,776	1.6	11,033	1.8
Accidents (Highway Vehicle)	336	2.4	837	3.3	650	3.4	9,173,555	5.5	25,594	4.1
Accidents (Non-Highway Vehicle)	81	0.6	182	0.7	155	0.8	2,136,007	1.3	7,731	1.2
Accidents (Other Transportation)	154	1.1	314	1.2	249	1.3	3,410,027	2.1	13,103	2.1
Explosions	24	0.2	39	0.2	27	0.1	435,294	0.3	394	0.1
Assaults, Violent Acts	617	4.5	1,147	4.5	812	4.3	6,235,251	3.8	28,317	4.6
Other Events/Exposures	78	0.6	193	0.8	114	0.6	1,661,390	1.0	1,744	0.3
Nonclassifiable	199	1.5	581	2.3	354	1.9	6,961,561	4.2	11,434	1.8

Notes: Cost and percent totals may not add due to rounding.