

Respiratory Standard

The OSHA respirator standard applies to all occupational airborne exposures to contaminated air where the employee is:

- Exposed to a hazardous level of an airborne contaminant; or
- Required by the employer to wear respirators; or
- Permitted to wear respirators

A written respiratory protection program ensures that all employees are properly protected from respiratory hazards. According to 29 CFR 1910.134, employers must create and maintain a site specific written respiratory program if their employees use respiratory protection.

Type of Respirator

There are several different types of respiratory protection, including:

1. **Air-purifying respirator** - Respirators with an air-purifying filter, cartridge, or canister that removes specific air contaminants by passing ambient air through the air-purifying element. (E.g. N95/Half Mask/Full Face/ Loose-fitting powered-air-purifying Respirators)
2. **Atmosphere-supplying respirator** - Respirators that supplies the respirator user with breathing air from a source independent of the ambient atmosphere, and includes supplied-air respirators (SARs) and self-contained breathing apparatus (SCBA) units.



Did You Know?

OSHA webpage provides information that may apply to worker exposure to novel coronavirus, COVID-19.

To view the full articles, please go to; <https://www.osha.gov/SLTC/covid-19/>

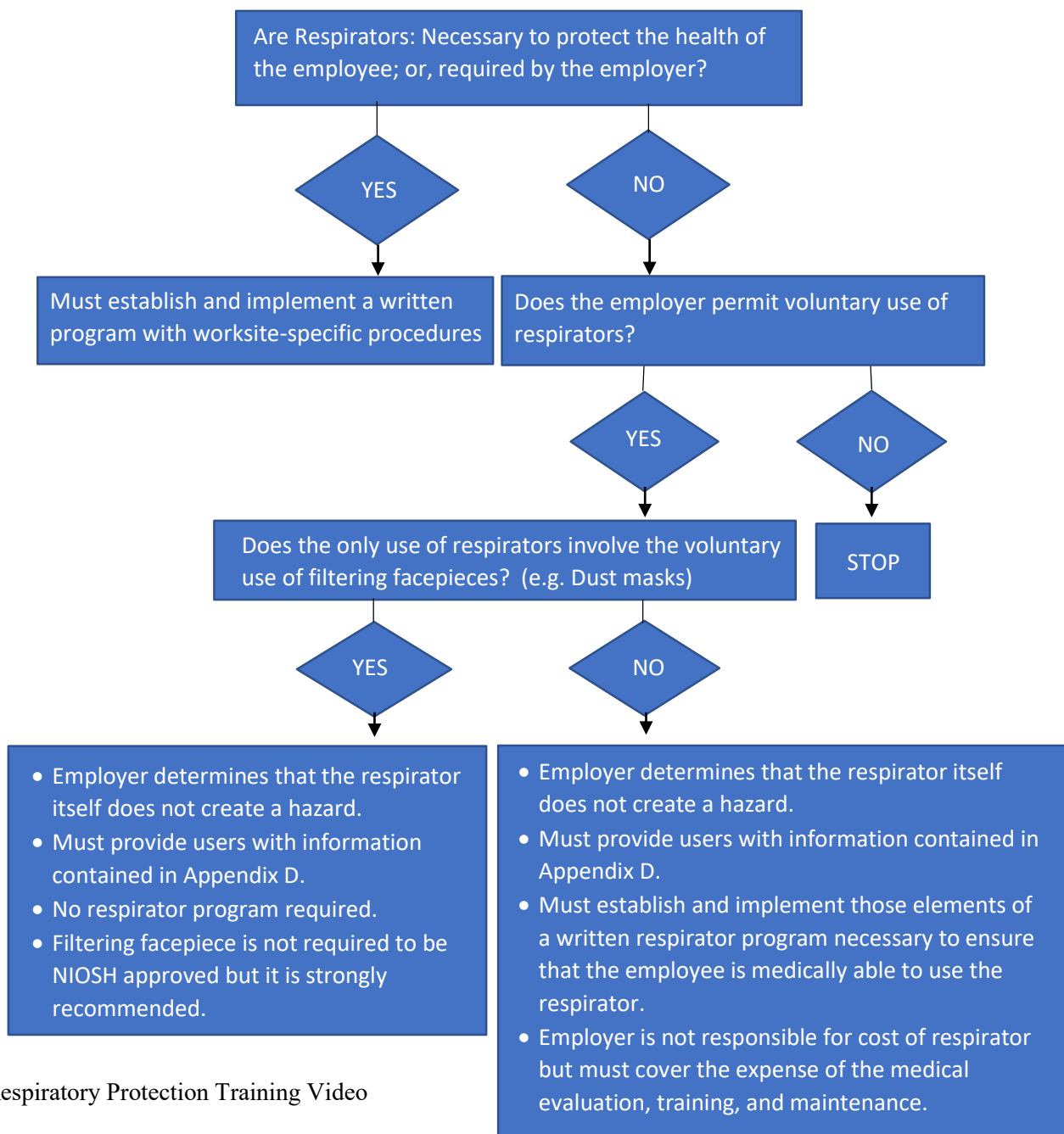
In order to select an appropriate respirator you must:

- Conduct an **exposure assessment** to determine the type and amount of hazardous exposure
- Take into account the **factors that can influence respirator selection** such as job-site and worker characteristics
- Know the various **kinds of respirators** and their relevant characteristics
- Understand the **assigned protection factors**

Voluntary vs. Required Use of Respirator Requirements

	Voluntary Use		Required Use
	Uncertified Filtering facepiece	All other types of respirators	All types of respirators
Written Respiratory Protection Program		X	X
Respirator Selection			X
Medial Evaluations		X	X
Fit Testing			X
Clean, storage & maintenance		X	X
Training			X
Appendix D	X	X	

Respirator-Use Requirements Flow Chart 29 CFR 1910.134 (c)



Respiratory Protection Training Video

https://www.osha.gov/SLTC/respiratoryprotection/training_videos.html



If you would like to read more, find it here:
<https://www.osha.gov/SLTC/respiratoryprotection/>
For more information, please contact HIOSH at:
dlir.hiosh@hawaii.gov or 808-586-9100