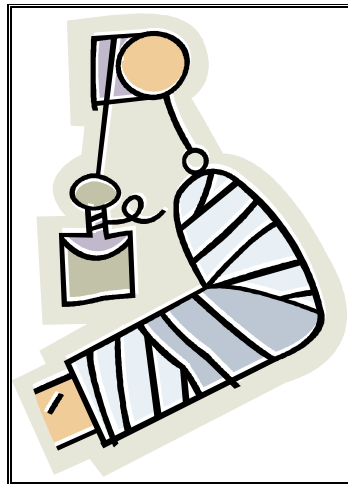
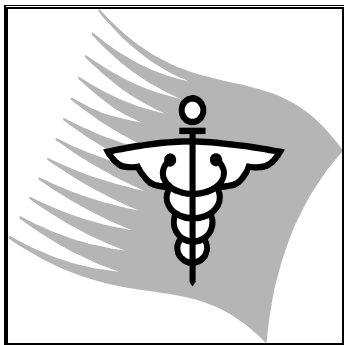
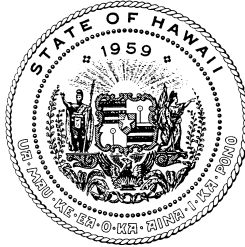




# **WORKERS' COMPENSATION DATA BOOK 2011**



**STATE OF HAWAII  
DEPARTMENT OF LABOR AND INDUSTRIAL RELATIONS  
RESEARCH AND STATISTICS OFFICE**



**State of Hawaii**  
**Neil Abercrombie, Governor**

---

**Department of Labor and Industrial Relations**

Dwight Takamine, Director  
Audrey Hidano, Deputy Director

**Research and Statistics Office**

Francisco Corpuz, Chief

**Operations Management Information**

Elienne Yoshida, Supervisor

Prepared by:

Siriporn Rolseth  
Geraldyn Lacno  
Tricia Malloy

**Disability Compensation Division**

Walter Kawamura, Administrator

# **WORKERS' COMPENSATION DATA BOOK 2011**

## **INTRODUCTION**

The WORKERS' COMPENSATION DATA BOOK presents a summary of information on injuries and illnesses reported to the Disability Compensation Division of the State of Hawaii Department of Labor and Industrial Relations.

This publication includes work injury and illness case, cost and days lost information by island, industry, occupation, sex, part of body, average weekly wage, source of injury or illness, marital status, event or exposure, nature of injury or illness and age.

Publications from 2000 are available on the Internet at <http://hawaii.gov/labor/rs/>.



Please direct inquiries or comments to:

State of Hawaii  
Department of Labor & Industrial Relations  
Research and Statistics Office  
Operations Management Information Staff  
830 Punchbowl St., Room 304  
Honolulu, HI 96813

Data contained in this report – 586-9014  
Copies of this report – 586-8999  
E-mail: [dlir.research@hawaii.gov](mailto:dlir.research@hawaii.gov)

**"This page is intentionally left blank."**

## TABLE OF CONTENTS

Highlights 2011 .....	3
2011 Hawaii Reported Injuries and Illnesses .....	4
2011 Hawaii Processed Cases and Cost .....	5
2011 Average Cost by Part of Body .....	5
2011 Hawaii Type of Payments by Industry .....	5
Back Cases: Cost and Days Lost by Nature of Injury and Illness .....	6
2011 Hawaii Workers' Compensation Statistics	
Reported Cases:	
Part of Body Affected by Nature of Injury or Illness .....	7
Event or Exposure by Source of Injury or Illness .....	7
Reported & Processed Cases, Cost, Days Lost:	
State .....	8
Oahu .....	11
Maui County .....	13
Hawaii County .....	15
Kauai County .....	17
2011 Hawaii Reported Fatalities .....	19
2011 Hearings and Decisions Issued .....	20
Maximum Weekly Wage Base and	
Maximum Weekly Benefit Amount History .....	20
2011 Digest of the Workers' Compensation Law .....	21
Definitions .....	22
Technical Notes .....	23

## HIGHLIGHTS 2011

### STATE OF HAWAII

**REPORTED CASES: 20,515**  
**PROCESSED CASES: 39,115**  
**PROCESSED CASES WITH COST: 28,686**  
**TOTAL COST: \$246,780,115**  
**COST PER CASE: \$8,603**  
**MEDICAL COST: \$103,511,150**  
**DAYS LOST: 945,665**  
**REPORTED FATALITIES: 24**



#### **Kauai County**

Reported Cases: 1,296  
Processed Cases: 2,361  
Processed Cases with Cost: 1,635  
Total Cost: \$11,788,325  
Cost Per Case: \$7,210  
Medical Cost: \$6,489,440  
Days Lost: 40,849  
Reported Fatality: 2



#### **Maui County**

Reported Cases: 2,906  
Processed Cases: 5,536  
Processed Cases with Cost: 4,065  
Total Cost: \$31,532,629  
Cost Per Case: \$7,757  
Medical Cost: \$12,889,868  
Days Lost: 116,030  
Reported Fatality: 2

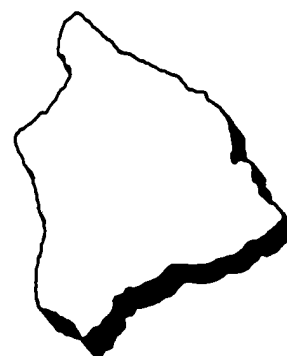


#### **Hawaii County**

Reported Cases: 2,543  
Processed Cases: 5,474  
Processed Cases with Cost: 3,993  
Total Cost: \$37,278,083  
Cost Per Case: \$9,336  
Medical Cost: \$14,739,296  
Days Lost: 167,738  
Reported Fatality: 4

#### **Oahu**

Reported Cases: 13,770  
Processed Cases: 25,744  
Processed Cases with Cost: 18,993  
Total Cost: \$166,181,078  
Cost Per Case: \$8,750  
Medical Cost: \$69,392,546  
Days Lost: 621,048  
Reported Fatality: 16



Note: Cost may not add due to rounding.

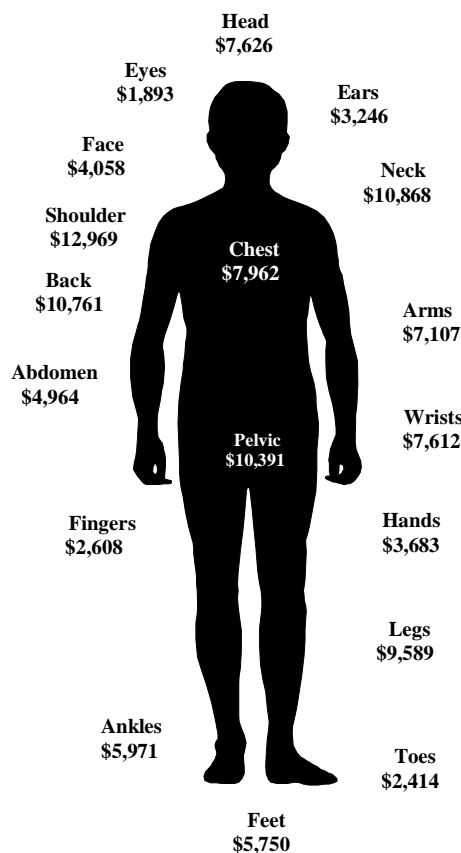
## 2011 HAWAII REPORTED INJURIES AND ILLNESSES

<b>Employment and Reported Cases by Industry for Hawaii</b>						
<b>INDUSTRY</b>	<b>2010</b>			<b>2011</b>		
	Employment	Reported Cases	Frequency	Employment	Reported Cases	Frequency
Total	552,400	20,654	1 in 27	559,164	20,515	1 in 27
Natural Resources & Mining	6,489	254	1 in 26	6,385	280	1 in 23
Construction	28,540	1,425	1 in 20	28,427	1,327	1 in 21
Manufacturing	12,935	614	1 in 21	13,184	616	1 in 21
Wholesale Trade	17,699	682	1 in 26	17,465	663	1 in 26
Retail Trade	65,921	2,704	1 in 24	67,095	2,625	1 in 26
Transportation & Warehousing	23,159	1,413	1 in 16	23,766	1,350	1 in 18
Utilities	3,213	94	1 in 34	3,327	109	1 in 31
Information	9,877	342	1 in 29	8,479	239	1 in 35
Finance, Insurance, Real Estate, Rent & Leasing	26,882	582	1 in 46	26,588	636	1 in 42
Professional, Scientific & Technical Services	24,160	286	1 in 84	24,318	284	1 in 86
Management of Companies & Enterprises	6,635	351	1 in 19	6,917	350	1 in 20
Administrative, Support & Waste Management	40,760	1,395	1 in 29	43,930	1,530	1 in 29
Educational Services	13,758	371	1 in 37	13,834	339	1 in 41
Health Care & Social Assistance	60,664	1,966	1 in 31	61,217	1,923	1 in 32
Arts, Entertainment & Recreation	10,363	405	1 in 26	10,571	450	1 in 23
Accommodations & Food Services	89,981	3,285	1 in 27	92,665	3,283	1 in 28
Other Services, except Public Administration	24,098	699	1 in 34	24,209	705	1 in 34
Public Administration	86,820	3,764	1 in 23	86,541	3,779	1 in 23
Information Not Available/Unclassified	446	22	1 in 20	246	27	1 in 9

- The annual employment level rose by 6,764 or 1.2 percent to 559,164, reflecting increases to the employment levels for 12 out of the 18 industries.
- Administrative, support & waste management had the largest increase in the number of employees. Employment increased by 3,170 or 7.8 percent to 43,930. With an increase to the number of reported cases, its frequency remained unchanged at 1 injury for every 29 workers.
- In 2011, the number of reported injuries and illnesses decreased by 139 cases or 0.7 percent to 20,515.
- The information industry had the most significant reduction in employment with a drop of 1,398 workers. It also experienced the greatest decline in reported injuries and illnesses, decreasing 103 to 239 cases.
- Since 2009, the industry with the highest frequency of injured workers to employment has been transportation & warehousing. In 2011, its frequency was 1 injury in every 18 workers.
- For the past 7 years, the lowest frequency occurred in the professional, scientific & technical services industry. In 2011, the frequency was 1 injury in every 86 workers.

## 2011 HAWAII PROCESSED CASES AND COST

### 2011 Average Cost by Part of Body



- Processed cases increased by 173 cases or 0.4 percent to 39,115 in 2011.
- Total workers' compensation payment increased by \$4.4 million or 1.8 percent over the year to \$246,780,115.
- Shoulder had the highest average cost of all body parts since 2002 (trunk broken down to shoulder, chest, abdomen, and pelvic). In 2011, the average cost for shoulder was \$12,969, increasing \$375 from the previous year.
- Eyes had the lowest average cost by part of body for over 10 years.
- Neck had the highest increase in average cost by body part, increasing \$1,350 to \$10,868 in 2011.
- Head had the greatest decrease in average cost by body part, dropping \$1,806 to \$7,626 over the year.
- Medical stood at \$103,511,150, accounting for 41.9 percent of the total workers' compensation cost.
- The largest average medical cost by industry was construction at \$5,778.
- The accommodation and food services industry had the lowest average medical cost at \$2,849.

### 2011 HAWAII TYPE OF

INDUSTRY	TOTAL WORKERS' COMPENSATION COST	TEMPORARY TOTAL DISABILITY		TEMPORARY PARTIAL DISABILITY		PERMANENT TOTAL DISABILITY	
		Cases	Cost	Cases	Cost	Cases	Cost
<b>INDUSTRY</b>	<b>\$246,780,115</b>	<b>10,119</b>	<b>\$62,781,420</b>	<b>1,198</b>	<b>\$2,716,350</b>	<b>607</b>	<b>\$17,475,318</b>
Natural Resources & Mining	\$3,848,518	121	\$609,919	9	\$56,393	18	\$487,549
Construction	\$31,708,808	755	\$9,334,852	62	\$141,402	52	\$1,829,923
Manufacturing	\$9,402,384	306	\$1,841,693	34	\$82,277	52	\$1,179,535
Wholesale Trade	\$9,569,110	400	\$2,939,381	36	\$80,560	6	\$155,923
Retail Trade	\$21,269,502	1,143	\$4,893,241	210	\$441,370	34	\$774,373
Transportation & Warehousing	\$21,013,465	943	\$5,774,507	178	\$356,155	24	\$618,013
Utilities	\$1,613,659	52	\$335,971	1	\$558	6	\$136,528
Information	\$3,539,087	112	\$1,061,811	11	\$63,502	14	\$324,743
Finance, Ins, Real Estate, Rent, & Leasing	\$5,957,271	257	\$1,436,439	32	\$61,803	11	\$326,018
Professional, Scientific, & Technical Svcs.	\$3,218,738	93	\$706,946	9	\$35,398	5	\$164,500
Management of Companies & Enterprises	\$2,164,228	133	\$524,275	13	\$21,399	13	\$470,968
Administrative, Support, & Waste Mgmt.	\$21,340,350	818	\$5,313,848	82	\$164,274	7	\$243,918
Educational Services	\$3,176,554	130	\$525,548	24	\$50,132	6	\$150,226
Health Care & Social Assistance	\$20,207,234	910	\$5,454,007	146	\$368,003	24	\$596,883
Arts, Entertainment, & Recreation	\$3,840,841	187	\$652,759	20	\$28,599	5	\$124,411
Accommodation and Food Services	\$23,096,734	1,363	\$5,074,665	137	\$295,975	32	\$1,812,443
Other Services, except Public Admin.	\$7,675,953	337	\$1,698,684	35	\$71,603	11	\$181,672
Public Administration	\$47,745,322	2,042	\$14,371,842	157	\$391,793	140	\$3,478,798
Other	\$6,392,357	17	\$231,032	2	\$5,155	147	\$4,418,893

Cost is rounded to the nearest whole dollar and may not add to total.



Back Cases: Cost and Days Lost by Nature of Injury and Illness	2010				2011			
	Cases With Cost	Total Cost	Medical Cost	Days Lost	Cases With Cost	Total Cost	Medical Cost	Days Lost
<b>Nature of Injury and Illness Total</b>	<b>5,274</b>	<b>\$57,516,026</b>	<b>\$25,501,867</b>	<b>218,612</b>	<b>5,158</b>	<b>\$55,506,678</b>	<b>\$23,862,605</b>	<b>224,754</b>
Sprain, Strain	3,154	\$31,569,498	\$13,870,447	119,655	3,050	\$31,180,040	\$13,719,662	127,207
Back Pain	1,416	\$15,541,867	\$6,917,657	64,768	1,433	\$14,133,402	\$6,413,728	68,441
Traumatic Injury	363	\$5,447,293	\$2,880,523	21,353	350	\$4,959,145	\$2,162,339	18,428
Dislocation	42	\$858,348	\$350,015	3,895	45	\$703,776	\$319,309	2,682
Bruises, Contusions	103	\$824,364	\$370,828	3,082	81	\$923,218	\$373,781	2,671
Fracture	46	\$894,495	\$475,806	2,363	46	\$1,144,507	\$459,650	2,682
Multiple Traumatic Injuries/Disorders	10	\$131,097	\$16,744	166	14	\$39,635	\$14,450	94
Musculoskeletal System & Connective Tissue	29	\$491,605	\$187,175	1,772	31	\$425,067	\$164,965	1,739
Other Injuries and Illnesses	33	\$469,542	\$315,006	1,158	28	\$224,808	\$69,451	810
Non-classifiable	78	\$1,287,917	\$117,667	400	80	\$1,773,081	\$165,272	0

Cost is rounded to the nearest whole dollar and may not add to total.

#### Back Cases:

- Of all body parts, back cases with cost continued to exhibit the highest number of cases, most days lost and greatest total cost. This represented 5,158 cases or 18.0 percent and 224,754 days lost or 23.8 percent at a total cost of \$55.5 million or 22.5 percent.
- All nature of injury and illness categories except for bruises/contusions and fracture showed a decrease in total cost from the previous year.

## PAYMENTS BY INDUSTRY

PERMANENT PARTIAL DISABILITY		DEATH		DISFIGUREMENT		VOCATIONAL REHABILITATION		ATTENDANT SERVICES		MEDICAL		
Cases	Cost	Cases	Cost	Cases	Cost	Cases	Cost	Cases	Cost	Cases	Cost	Cost per Case
<b>2,761</b>	<b>\$51,633,658</b>	<b>89</b>	<b>\$1,977,826</b>	<b>1,781</b>	<b>\$908,737</b>	<b>1,065</b>	<b>\$5,494,389</b>	<b>9</b>	<b>\$281,268</b>	<b>26,452</b>	<b>\$103,511,150</b>	<b>\$3,913</b>
45	\$1,094,703	4	\$84,994	34	\$24,430	20	\$60,914	0	\$0	374	\$1,429,616	\$3,823
286	\$6,716,030	17	\$518,878	195	\$128,576	173	\$1,055,527	3	\$74,910	2,061	\$11,908,709	\$5,778
126	\$2,121,992	1	\$4,388	75	\$56,601	49	\$247,020	0	\$0	839	\$3,868,879	\$4,611
108	\$1,708,385	4	\$77,929	69	\$38,321	66	\$396,226	0	\$0	942	\$4,172,384	\$4,429
258	\$4,097,360	2	\$64,422	165	\$72,070	112	\$490,884	0	\$0	2,803	\$10,435,783	\$3,723
256	\$4,686,177	11	\$398,056	167	\$75,945	122	\$490,215	0	\$0	2,006	\$8,614,397	\$4,294
11	\$265,771	0	\$0	17	\$11,273	5	\$31,124	1	\$19,776	198	\$812,657	\$4,104
59	\$379,897	2	\$38,358	34	\$16,455	19	\$96,012	0	\$0	356	\$1,558,309	\$4,377
70	\$1,055,762	2	\$43,888	35	\$12,830	25	\$104,193	1	\$1,510	739	\$2,914,829	\$3,944
35	\$692,023	1	\$43,983	25	\$12,480	17	\$121,560	0	\$0	351	\$1,441,848	\$4,108
20	\$276,077	1	\$29,479	18	\$6,200	10	\$29,113	0	\$0	272	\$806,717	\$2,966
238	\$5,064,828	12	\$173,540	131	\$85,139	108	\$454,707	0	\$0	1,907	\$9,840,096	\$5,160
49	\$858,841	2	\$86,597	34	\$13,000	5	\$62,163	0	\$0	477	\$1,430,048	\$2,998
212	\$4,550,879	3	\$46,124	108	\$50,009	98	\$620,913	0	\$0	2,355	\$8,520,416	\$3,618
40	\$771,713	2	\$41,227	29	\$21,925	12	\$63,952	0	\$0	526	\$2,136,254	\$4,061
317	\$5,478,628	1	\$13,586	215	\$92,553	95	\$486,078	1	\$23,840	3,447	\$9,818,965	\$2,849
90	\$1,655,815	2	\$29,405	53	\$30,275	38	\$159,420	0	\$0	920	\$3,849,079	\$4,184
526	\$9,854,621	17	\$256,117	371	\$155,206	86	\$466,428	2	\$71,872	5,667	\$18,698,645	\$3,300
15	\$304,154	5	\$26,856	6	\$5,450	5	\$57,940	1	\$89,360	212	\$1,253,517	\$5,913

## 2011 HAWAII WORKERS' COMPENSATION STATISTICS

### PART OF BODY AFFECTED BY NATURE OF INJURY OR ILLNESS

Reported Cases	Part of Body	Eyes	Head, Neck, Excl. Eyes	Trunk, Excl. Back	Back	Fingers	Upper Extremity, Excl. Fingers	Lower Extremity	Body System	Multiple Body Parts	Non-classifiable
<b>Nature of Injury or Illness</b>	20,515	744	1,644	2,043	3,016	2,763	3,148	3,999	782	2,280	96
Traumatic Injuries	1,989	128	256	194	200	124	227	441	0	387	32
Fracture	615	0	61	57	16	137	145	188	0	11	0
Sprains, Strains	5,262	2	150	725	1,793	101	576	1,389	0	521	5
Cut, Laceration	2,824	46	424	8	8	1,512	552	250	0	22	2
Puncture, Excluding Bites	558	7	18	9	1	274	136	109	0	2	2
Abrasions, Scratches	342	72	49	8	1	17	72	78	0	45	0
Bruises, Contusions	1,843	25	237	243	58	178	307	595	0	197	3
Foreign Bodies	278	278	0	0	0	0	0	0	0	0	0
Heat Burns	449	9	25	12	2	44	264	51	0	42	0
Multiple Injuries/Disorders	618	8	47	24	8	32	52	119	0	328	0
Back Pain	882	0	0	0	882	0	0	0	0	0	0
Pain, Excluding Back	1,996	15	112	435	0	149	438	575	0	272	0
Carpal Tunnel	75	0	0	0	0	0	75	0	0	0	0
Musculoskeletal	97	0	1	18	15	7	41	11	0	4	0
Skin Disorders	103	0	3	6	2	10	50	2	0	29	1
Symptoms	319	35	32	29	0	2	10	9	178	23	1
Mental Disorders	318	0	0	0	0	0	0	0	318	0	0
Exposure	204	23	18	2	0	0	9	0	135	12	5
Other Injuries/Illnesses	1,710	96	211	273	30	176	193	182	150	384	15
Nonclassifiable	33	0	0	0	0	0	1	0	1	1	30

### EVENT OR EXPOSURE BY SOURCE OF INJURY OR ILLNESS

Reported Cases	Event or Exposure	Struck By or Struck Against	Caught In, Under, or Between	Rubbed or Abraded	Fall	Bodily Reaction	Overexertion	Contact With Temp. Extremes	Exposure (Harmful Substance)	Highway Motor Vehicle Accidents	Other
<b>Source of Injury or Illness</b>	20,515	5,050	653	347	3,437	1,737	4,604	453	1,288	450	2,496
Chemical, Chemical Product	413	5	0	0	0	0	0	13	392	0	3
Containers	2,843	671	74	3	82	0	1,894	40	0	0	79
Furniture, Fixtures	1,214	532	64	4	126	0	452	2	1	0	33
Machinery	1,260	498	146	10	53	0	364	79	11	2	97
Building Materials	515	262	20	14	21	0	173	1	1	0	23
Vehicle, Mobile Eqmt Parts	177	49	10	1	5	0	99	0	0	0	13
Other Parts and Materials	525	358	17	3	8	0	93	6	1	0	39
Plants, Animals, Minerals	1,000	169	6	4	32	0	66	157	328	0	238
Person, Injured Worker	2,500	2	0	1	0	1,737	17	0	243	0	500
Person, Other	1,271	81	19	0	3	0	409	0	71	0	688
Floors, Walkways, Ground	2,936	48	7	2	2,860	0	8	0	0	0	11
Structures, Other Surfaces	702	378	88	1	133	0	81	0	0	0	21
Handtools (Nonpowered)	1,216	985	27	2	4	0	157	3	0	0	38
Handtools (Powered)	309	159	21	2	4	0	89	9	11	0	14
Other Tools, Instruments, Equipment	781	279	21	5	27	0	269	4	139	0	37
Highway Vehicle, Motorized	897	158	67	4	35	0	64	2	0	442	125
Nonpowered Plant, Vehicles	346	120	38	1	18	0	162	0	0	0	7
Other Vehicles	333	73	16	0	13	0	42	2	0	6	181
Scrap, Waste, Debris	477	153	0	289	3	0	13	1	11	0	7
Other Sources	800	70	12	1	10	0	152	134	79	0	342

# 2011 HAWAII WORKERS' COMPENSATION STATISTICS

STATE	REPORTED		PROCESSED		WITH COST		COST		DAYS LOST	
ISLAND	20,515	100.0%	39,115	100.0%	28,686	100.0%	\$246,780,115	100.0%	945,665	100.0%
Oahu	13,770	67.1	25,744	65.8	18,993	66.2	166,181,078	67.3	621,048	65.7
East Hawaii	1,119	5.5	2,766	7.1	1,994	7.0	17,856,188	7.2	84,391	8.9
West Hawaii	1,424	6.9	2,708	6.9	1,999	7.0	19,421,895	7.9	83,347	8.8
Maui	2,740	13.4	5,222	13.4	3,880	13.5	29,981,637	12.2	109,881	11.6
Molokai	77	0.4	166	0.4	113	0.4	1,006,360	0.4	4,401	0.5
Lanai	89	0.4	148	0.4	72	0.3	544,632	0.2	1,748	0.2
Kauai	1,296	6.3	2,361	6.0	1,635	5.7	11,788,325	4.8	40,849	4.3
INDUSTRY	20,515	100.0%	39,115	100.0%	28,686	100.0%	\$246,780,115	100.0%	945,665	100.0%
Natural Resources & Mining	280	1.4	589	1.5	425	1.5	3,848,518	1.6	13,311	1.4
Construction	1,327	6.5	2,742	7.0	2,218	7.7	31,708,808	12.9	110,826	11.7
Manufacturing	616	3.0	1,161	3.0	926	3.2	9,402,384	3.8	29,149	3.1
Wholesale Trade	663	3.2	1,256	3.2	1,008	3.5	9,569,110	3.9	48,016	5.1
Retail Trade	2,625	12.8	4,398	11.2	3,009	10.5	21,269,502	8.6	92,730	9.8
Transportation & Warehousing	1,350	6.6	2,771	7.1	2,197	7.7	21,013,465	8.5	82,093	8.7
Utilities	109	0.5	316	0.8	213	0.7	1,613,659	0.7	3,614	0.4
Information	239	1.2	523	1.3	387	1.4	3,539,087	1.4	11,117	1.2
Fin, Ins, Real Est, Rent, & Leasing	636	3.1	1,057	2.7	786	2.7	5,957,271	2.4	24,377	2.6
Professional, Scientific, & Tech.	284	1.4	495	1.3	373	1.3	3,218,738	1.3	10,254	1.1
Management of Companies & Entrpr.	350	1.7	509	1.3	310	1.1	2,164,228	0.9	8,076	0.9
Administrative, Support, & Waste	1,530	7.5	2,634	6.7	2,038	7.1	21,340,350	8.7	93,446	9.9
Educational Services	339	1.7	647	1.7	500	1.7	3,176,554	1.3	7,941	0.8
Health Care & Social Assistance	1,923	9.4	3,337	8.5	2,497	8.7	20,207,234	8.2	86,794	9.2
Arts, Entertainment, & Recreation	450	2.2	739	1.9	560	2.0	3,840,841	1.6	12,568	1.3
Accommodation and Food Services	3,283	16.0	5,305	13.6	3,724	13.0	23,096,734	9.4	91,271	9.7
Other Services, except Public Admin.	705	3.4	1,283	3.3	977	3.4	7,675,953	3.1	31,936	3.4
Public Administration	3,779	18.4	8,985	23.0	6,208	21.6	47,745,322	19.4	183,234	19.4
Other	27	0.1	368	0.9	330	1.2	6,392,357	2.6	4,912	0.5
TYPE OF INSURANCE	20,515	100.0%	39,115	100.0%	28,686	100.0%	\$246,780,115	100.0%	945,665	100.0%
Carrier	13,808	67.3	24,665	63.1	18,238	63.6	150,507,890	61.0	622,190	65.8
Self-Insured: Private & Captive	3,011	14.7	5,626	14.4	4,392	15.3	35,776,976	14.5	143,337	15.2
Self-Insured: Government	3,696	18.0	8,824	22.6	6,056	21.1	43,959,240	17.8	180,138	19.1
State of Hawaii	1,884	9.2	4,988	12.8	3,285	11.5	22,782,765	9.2	108,690	11.5
City & County of Honolulu	1,340	6.5	2,712	6.9	1,908	6.7	15,895,381	6.4	50,141	5.3
Hawaii County	143	0.7	472	1.2	319	1.1	2,095,118	0.9	6,979	0.7
Maui County	227	1.1	450	1.2	388	1.4	2,224,185	0.9	10,803	1.1
Kauai County	102	0.5	202	0.5	156	0.5	961,791	0.4	3,525	0.4
Special Compensation Fund	INA	--	INA	--	INA	--	16,536,009	6.7	INA	--
OCCUPATION	20,515	100.0%	39,115	100.0%	28,686	100.0%	\$246,780,115	100.0%	945,665	100.0%
Executive, Admin. & Managerial	709	3.5	1,419	3.6	1,021	3.6	9,238,183	3.7	26,590	2.8
Professional Specialty	1,545	7.5	3,260	8.3	2,265	7.9	16,126,940	6.5	46,205	4.9
Technical Support	462	2.3	856	2.2	619	2.2	4,801,198	2.0	16,708	1.8
Sales	1,520	7.4	2,581	6.6	1,736	6.1	14,142,347	5.7	57,156	6.0
Administrative Support	1,364	6.7	2,789	7.1	1,865	6.5	13,288,257	5.4	51,065	5.4
Services	6,732	32.8	12,062	30.8	8,601	30.0	61,232,642	24.8	267,299	28.3
Agricultural, Forestry & Fishing	1,025	5.0	1,948	5.0	1,463	5.1	11,214,562	4.5	54,642	5.8
Mechanic, Repairer	1,210	5.9	2,303	5.9	1,786	6.2	15,815,598	6.4	49,440	5.2
Construction Trades	1,280	6.2	2,612	6.7	2,098	7.3	29,912,958	12.1	100,212	10.6
Precision Production	325	1.6	607	1.6	456	1.6	3,020,513	1.2	13,668	1.5
Operator, Fabricator, Inspector	308	1.5	616	1.6	490	1.7	4,399,596	1.8	13,987	1.5
Transportation, Material Moving	1,360	6.6	2,947	7.5	2,353	8.2	26,013,821	10.5	106,500	11.3
Handler, Helper, Laborer	2,523	12.3	4,641	11.9	3,571	12.5	31,230,202	12.7	135,758	14.4
Nonclassifiable	152	0.7	474	1.2	362	1.3	6,343,298	2.6	6,435	0.7
SEX	20,515	100.0%	39,115	100.0%	28,686	100.0%	\$246,780,115	100.0%	945,665	100.0%
Male	12,330	60.1	23,507	60.1	17,705	61.7	163,599,906	66.3	609,793	64.5
Female	8,185	39.9	15,608	39.9	10,981	38.3	83,180,209	33.7	335,872	35.5

Notes: Cost and percent totals may not add due to rounding.

# 2011 HAWAII WORKERS' COMPENSATION STATISTICS

STATE	REPORTED		PROCESSED		WITH COST		COST		DAYS LOST	
PART OF BODY	20,515	100.0%	39,115	100.0%	28,686	100.0%	\$246,780,115	100.0%	945,665	100.0%
Ears	70	0.3	168	0.4	113	0.4	366,792	0.2	526	0.1
Face, Excluding Eyes, Ears	631	3.1	936	2.4	665	2.3	2,698,408	1.1	10,009	1.1
Eyes	744	3.6	1,095	2.8	782	2.7	1,480,008	0.6	2,534	0.3
Head, Excluding Ears, Face, Eyes	671	3.3	1,128	2.9	798	2.8	6,085,600	2.5	20,188	2.1
Neck	272	1.3	607	1.6	472	1.7	5,129,477	2.1	17,141	1.8
Trunk, Excluding Back	2,043	10.0	4,226	10.8	3,166	11.0	35,505,494	14.4	141,952	15.0
<i>Shoulder</i>	977	4.8	2,225	5.7	1,741	6.1	22,578,627	9.2	91,547	9.7
<i>Chest</i>	353	1.7	628	1.6	416	1.5	3,312,200	1.3	8,437	0.9
<i>Abdomen</i>	123	0.6	217	0.6	132	0.5	655,291	0.3	3,511	0.4
<i>Pelvic Region</i>	275	1.3	520	1.3	386	1.4	4,010,847	1.6	17,037	1.8
<i>Trunk, Multiple/Unspecified</i>	315	1.5	636	1.6	491	1.7	4,948,529	2.0	21,420	2.3
Back (Spine/Spinal Cord)	3,016	14.7	6,589	16.9	5,158	18.0	55,506,678	22.5	224,754	23.8
Arms	1,109	5.4	1,956	5.0	1,416	4.9	10,063,466	4.1	40,010	4.2
Wrists	702	3.4	1,364	3.5	953	3.3	7,254,334	2.9	30,163	3.2
Hands, Excluding Fingers	1,010	4.9	1,571	4.0	1,105	3.9	4,069,913	1.7	17,258	1.8
Fingers	2,763	13.5	4,139	10.6	3,081	10.7	8,034,804	3.3	25,789	2.7
Upper Extremities, Multiple	327	1.6	615	1.6	431	1.5	3,421,001	1.4	12,692	1.3
Legs	2,192	10.7	4,409	11.3	3,347	11.7	32,095,348	13.0	130,529	13.8
Ankles	811	4.0	1,374	3.5	1,062	3.7	6,341,518	2.6	29,547	3.1
Feet, Excl. Toes	591	2.9	1,046	2.7	782	2.7	4,496,804	1.8	20,621	2.2
Toes	245	1.2	403	1.0	288	1.0	695,091	0.3	3,489	0.4
Lower Extremities, Multiple	160	0.8	347	0.9	260	0.9	2,079,207	0.8	7,973	0.8
Body Systems	782	3.8	1,639	4.2	670	2.3	6,674,697	2.7	25,232	2.7
Multiple Body Parts	2,280	11.1	5,207	13.3	3,932	13.7	50,382,816	20.4	178,268	18.9
Nonclassifiable	96	0.5	296	0.8	205	0.7	4,398,659	1.8	6,990	0.7
<b>AVERAGE WEEKLY WAGE</b>	<b>20,515</b>	<b>100.0%</b>	<b>39,115</b>	<b>100.0%</b>	<b>28,686</b>	<b>100.0%</b>	<b>\$246,780,115</b>	<b>100.0%</b>	<b>945,665</b>	<b>100.0%</b>
\$01-\$200	698	3.4	1,375	3.5	1,019	3.6	8,108,411	3.3	21,289	2.3
\$200.01-\$400	2,580	12.6	4,861	12.4	3,537	12.3	25,442,316	10.3	115,993	12.3
\$400.01-\$600	3,403	16.6	6,399	16.4	4,720	16.5	39,905,107	16.2	164,712	17.4
\$600.01-\$800	3,466	16.9	6,798	17.4	5,009	17.5	43,356,567	17.6	194,487	20.6
\$800.01-\$1000	1,986	9.7	4,029	10.3	3,048	10.6	29,180,452	11.8	107,801	11.4
Over \$1000	3,260	15.9	6,133	15.7	4,533	15.8	43,283,845	17.5	133,061	14.1
Information Not Available	5,122	25.0	9,520	24.3	6,820	23.8	57,503,417	23.3	208,322	22.0
<b>SOURCE OF INJURY OR ILLNESS</b>	<b>20,515</b>	<b>100.0%</b>	<b>39,115</b>	<b>100.0%</b>	<b>28,686</b>	<b>100.0%</b>	<b>\$246,780,115</b>	<b>100.0%</b>	<b>945,665</b>	<b>100.0%</b>
Chemical, Chemical Product	413	2.0	625	1.6	387	1.3	1,166,505	0.5	3,841	0.4
Containers	2,843	13.9	5,306	13.6	4,071	14.2	33,771,993	13.7	154,358	16.3
Furniture, Fixtures	1,214	5.9	2,009	5.1	1,452	5.1	11,140,329	4.5	46,976	5.0
Machinery	1,260	6.1	2,202	5.6	1,663	5.8	12,824,548	5.2	48,862	5.2
Building Materials	515	2.5	909	2.3	718	2.5	6,788,215	2.8	25,186	2.7
Vehicle, Mobile Equipment Parts	177	0.9	338	0.9	273	1.0	2,623,746	1.1	12,344	1.3
Other Parts and Materials	525	2.6	918	2.4	730	2.5	4,569,144	1.9	15,662	1.7
Plants, Animals, Minerals	1,000	4.9	1,581	4.0	1,034	3.6	5,127,875	2.1	18,902	2.0
Person, Injured Worker	2,500	12.2	5,537	14.2	3,645	12.7	35,825,100	14.5	143,291	15.2
Person, Other than Injured Worker	1,271	6.2	2,457	6.3	1,766	6.2	14,104,890	5.7	64,453	6.8
Floors, Walkways, Ground	2,936	14.3	6,126	15.7	4,746	16.5	50,594,245	20.5	181,984	19.2
Structures, Other Surfaces	702	3.4	1,236	3.2	930	3.2	7,058,534	2.9	29,605	3.1
Handtools (Nonpowered)	1,216	5.9	1,869	4.8	1,423	5.0	5,469,743	2.2	22,695	2.4
Handtools (Powered)	309	1.5	520	1.3	420	1.5	2,599,344	1.1	8,254	0.9
Other Tools, Instruments, Equipment	781	3.8	1,351	3.5	985	3.4	6,120,064	2.5	23,142	2.5
Highway Vehicle, Motorized	897	4.4	2,129	5.4	1,637	5.7	19,431,610	7.9	62,010	6.6
Nonpowered Plant Vehicles	346	1.7	663	1.7	496	1.7	4,506,066	1.8	21,282	2.3
Other Vehicles	333	1.6	666	1.7	548	1.9	5,698,489	2.3	21,669	2.3
Scrap, Waste, Debris	477	2.3	736	1.9	513	1.8	1,263,843	0.5	3,532	0.4
Other Sources	800	3.9	1,937	5.0	1,249	4.4	16,095,832	6.5	37,617	4.0
<b>MARITAL STATUS</b>	<b>20,515</b>	<b>100.0%</b>	<b>39,115</b>	<b>100.0%</b>	<b>28,686</b>	<b>100.0%</b>	<b>\$246,780,115</b>	<b>100.0%</b>	<b>945,665</b>	<b>100.0%</b>
Married	9,581	46.7	19,327	49.4	14,398	50.2	132,072,967	53.5	471,132	49.8
Single	10,228	49.9	18,512	47.3	13,416	46.8	107,678,208	43.6	451,248	47.7
Information Not Available	706	3.4	1,276	3.3	872	3.0	7,028,940	2.9	23,285	2.5

Notes: Cost and percent totals may not add due to rounding.

# 2011 HAWAII WORKERS' COMPENSATION STATISTICS

STATE	REPORTED		PROCESSED		WITH COST		COST		DAYS LOST	
EVENT OR EXPOSURE	20,515	100.0%	39,115	100.0%	28,686	100.0%	\$246,780,115	100.0%	945,665	100.0%
Struck Against	1,790	8.7	2,681	6.9	1,898	6.6	7,356,721	3.0	28,107	3.0
Struck By	3,260	15.9	5,165	13.2	3,919	13.7	17,013,597	6.9	62,689	6.6
Caught In, Under, or Between	653	3.2	1,060	2.7	827	2.9	5,057,283	2.1	20,369	2.2
Rubbed or Abraded	347	1.7	535	1.4	382	1.3	774,456	0.3	1,871	0.2
Other Contact with Object, Equipment	334	1.6	473	1.2	325	1.1	1,226,590	0.5	4,527	0.5
Falls (From Elevation)	977	4.8	2,265	5.8	1,838	6.4	24,535,120	9.9	85,331	9.0
Falls (To Same Level)	2,369	11.6	4,630	11.8	3,515	12.3	30,823,129	12.5	118,088	12.5
Falls (Other)	91	0.4	168	0.4	132	0.5	1,741,471	0.7	5,329	0.6
Bodily Reaction	1,737	8.5	3,549	9.1	2,647	9.2	23,774,215	9.6	95,775	10.1
Overexertion	4,604	22.4	9,636	24.6	7,505	26.2	77,839,124	31.5	340,460	36.0
Repetitive Motion	404	2.0	1,017	2.6	616	2.1	6,456,714	2.6	27,323	2.9
Heart Attacks and Strokes	28	0.1	91	0.2	24	0.1	607,917	0.3	977	0.1
Contact (Electrical)	46	0.2	83	0.2	63	0.2	914,300	0.4	1,473	0.2
Contact (Temperature Extremes)	453	2.2	664	1.7	436	1.5	1,140,705	0.5	4,695	0.5
Exposure (Noise)	19	0.1	80	0.2	47	0.2	229,054	0.1	365	0.0
Exposure (Harmful Substance)	1,288	6.3	2,153	5.5	1,059	3.7	4,373,114	1.8	20,358	2.2
Accidents (Highway Vehicle)	450	2.2	1,174	3.0	888	3.1	11,682,649	4.7	34,132	3.6
Accidents (Non-Highway Vehicle)	127	0.6	331	0.9	270	0.9	3,670,749	1.5	14,447	1.5
Accidents (Other Transportation)	186	0.9	416	1.1	333	1.2	5,184,886	2.1	17,295	1.8
Explosions	37	0.2	62	0.2	49	0.2	623,318	0.3	1,269	0.1
Assaults, Violent Acts	898	4.4	1,698	4.3	1,190	4.2	8,717,997	3.5	39,345	4.2
Other Events/Exposures	109	0.5	285	0.7	174	0.6	2,820,351	1.1	2,995	0.3
Nonclassifiable	308	1.5	899	2.3	549	1.9	10,216,655	4.1	18,445	2.0
NATURE OF INJURY OR ILLNESS	20,515	100.0%	39,115	100.0%	28,686	100.0%	\$246,780,115	100.0%	945,665	100.0%
Traumatic Injuries	1,989	9.7	3,845	9.8	2,826	9.9	28,727,523	11.6	116,539	12.3
Fracture	615	3.0	1,551	4.0	1,299	4.5	19,417,275	7.9	58,777	6.2
Sprains, Strains	5,262	25.7	11,080	28.3	8,690	30.3	83,505,920	33.8	352,349	37.3
Cut, Laceration	2,824	13.8	4,103	10.5	3,075	10.7	8,164,079	3.3	24,318	2.6
Puncture, Excluding Bites	558	2.7	801	2.1	599	2.1	876,098	0.4	2,850	0.3
Abrasions, Scratches	342	1.7	523	1.3	338	1.2	1,327,540	0.5	4,030	0.4
Bruises, Contusions	1,843	9.0	3,061	7.8	2,201	7.7	13,246,565	5.4	51,038	5.4
Foreign Bodies	278	1.4	399	1.0	282	1.0	513,749	0.2	1,134	0.1
Heat Burns	449	2.2	671	1.7	444	1.6	1,990,272	0.8	5,292	0.6
Multiple Injuries/Disorders	618	3.0	1,204	3.1	926	3.2	9,613,772	3.9	29,876	3.2
Back Pain	882	4.3	1,849	4.7	1,433	5.0	14,133,402	5.7	68,441	7.2
Pain, Excluding Back	1,996	9.7	4,045	10.3	2,905	10.1	26,623,505	10.8	114,919	12.2
Carpal Tunnel	75	0.4	221	0.6	125	0.4	1,254,996	0.5	6,607	0.7
Musculoskeletal	97	0.5	270	0.7	178	0.6	2,496,947	1.0	10,750	1.1
Skin Disorders	103	0.5	163	0.4	80	0.3	315,585	0.1	1,176	0.1
Symptoms	319	1.6	519	1.3	220	0.8	1,142,845	0.5	3,477	0.4
Mental Disorders	318	1.6	842	2.2	302	1.1	4,033,078	1.6	21,059	2.2
Exposure	204	1.0	236	0.6	94	0.3	42,558	0.0	67	0.0
Other Injuries/Illnesses	1,710	8.3	3,326	8.5	2,328	8.1	22,155,329	9.0	69,042	7.3
Nonclassifiable	33	0.2	406	1.0	341	1.2	7,199,077	2.9	3,924	0.4
AGE	20,515	100.0%	39,115	100.0%	28,686	100.0%	\$246,780,115	100.0%	945,665	100.0%
Under 18	54	0.3	83	0.2	54	0.2	668,347	0.3	504	0.1
18-24	2,184	10.7	3,234	8.3	2,296	8.0	8,979,991	3.6	37,903	4.0
25-34	4,488	21.9	7,480	19.1	5,490	19.1	38,414,843	15.6	157,331	16.6
35-44	4,462	21.8	8,952	22.9	6,633	23.1	62,311,926	25.3	229,544	24.3
45-54	5,067	24.7	10,925	27.9	8,051	28.1	81,132,653	32.9	307,537	32.5
55-64	3,461	16.9	6,939	17.7	5,050	17.6	45,505,478	18.4	173,662	18.4
Over 64	742	3.6	1,337	3.4	1,004	3.5	7,942,812	3.2	31,690	3.4
Information Not Available	57	0.3	165	0.4	108	0.4	1,824,065	0.7	7,494	0.8

Notes: Cost and percent totals may not add due to rounding.

# 2011 HAWAII WORKERS' COMPENSATION STATISTICS

OAHU	REPORTED		PROCESSED		WITH COST		COST		DAYS LOST	
INDUSTRY	13,770	100.0%	25,744	100.0%	18,993	100.0%	\$166,181,078	100.0%	621,048	100.0%
Natural Resources & Mining	79	0.6	148	0.6	114	0.6	1,138,334	0.7	3,481	0.6
Construction	990	7.2	1,903	7.4	1,545	8.1	20,876,502	12.6	73,547	11.8
Manufacturing	477	3.5	890	3.5	703	3.7	6,863,685	4.1	22,079	3.6
Wholesale Trade	497	3.6	914	3.6	729	3.8	6,928,761	4.2	31,326	5.0
Retail Trade	1,734	12.6	2,821	11.0	1,953	10.3	13,622,750	8.2	59,861	9.6
Transportation & Warehousing	1,030	7.5	2,067	8.0	1,657	8.7	16,114,128	9.7	58,180	9.4
Utilities	59	0.4	182	0.7	129	0.7	847,709	0.5	2,153	0.4
Information	192	1.4	417	1.6	315	1.7	2,839,561	1.7	8,860	1.4
Fin, Ins, Real Est, Rent, & Leasing	422	3.1	720	2.8	531	2.8	4,135,688	2.5	16,513	2.7
Professional, Scientific, & Tech.	215	1.6	358	1.4	266	1.4	2,153,581	1.3	5,675	0.9
Management of Companies & Entrpr.	207	1.5	299	1.2	182	1.0	1,290,277	0.8	4,597	0.7
Administrative, Support, & Waste	1,007	7.3	1,686	6.6	1,317	6.9	12,657,130	7.6	56,721	9.1
Educational Services	236	1.7	458	1.8	358	1.9	2,171,697	1.3	5,638	0.9
Health Care & Social Assistance	1,436	10.4	2,459	9.6	1,868	9.8	15,346,369	9.2	63,823	10.3
Arts, Entertainment, & Recreation	304	2.2	500	1.9	373	2.0	2,146,870	1.3	8,417	1.4
Accommodation and Food Services	1,825	13.3	2,867	11.1	2,044	10.8	13,522,568	8.1	52,325	8.4
Other Services, except Public Admin.	491	3.6	879	3.4	669	3.5	5,135,279	3.1	19,744	3.2
Public Administration	2,554	18.5	5,937	23.1	4,026	21.2	33,831,548	20.4	124,087	20.0
Other	15	0.1	239	0.9	214	1.1	4,558,641	2.7	4,021	0.6
PART OF BODY	13,770	100.0%	25,744	100.0%	18,993	100.0%	\$166,181,078	100.0%	621,048	100.0%
Ears	42	0.3	107	0.4	67	0.4	227,149	0.1	418	0.1
Face, Excluding Eyes, Ears	443	3.2	646	2.5	466	2.5	2,145,148	1.3	8,200	1.3
Eyes	482	3.5	710	2.8	512	2.7	956,456	0.6	2,000	0.3
Head, Excluding Ears, Face, Eyes	470	3.4	768	3.0	533	2.8	4,059,833	2.4	12,526	2.0
Neck	189	1.4	400	1.6	316	1.7	3,393,985	2.0	13,228	2.1
Trunk, Excluding Back	1,362	9.9	2,735	10.6	2,065	10.9	24,218,699	14.6	94,065	15.2
Back (Spine/Spinal Cord)	2,011	14.6	4,253	16.5	3,351	17.6	36,241,859	21.8	139,947	22.5
Arms	756	5.5	1,317	5.1	956	5.0	7,777,723	4.7	29,598	4.8
Wrists	502	3.7	913	3.6	640	3.4	4,350,654	2.6	19,863	3.2
Hands, Excluding Fingers	697	5.1	1,054	4.1	747	3.9	2,780,936	1.7	9,726	1.6
Fingers	1,842	13.4	2,744	10.7	2,049	10.8	4,897,568	3.0	15,619	2.5
Upper Extremities, Multiple	234	1.7	426	1.7	292	1.5	2,215,228	1.3	7,930	1.3
Legs	1,452	10.5	2,919	11.3	2,224	11.7	21,742,391	13.1	84,644	13.6
Ankles	534	3.9	893	3.5	703	3.7	4,225,711	2.5	18,939	3.1
Feet, Excluding Toes	419	3.0	725	2.8	542	2.9	3,277,838	2.0	14,237	2.3
Toes	170	1.2	273	1.1	196	1.0	507,235	0.3	2,474	0.4
Lower Extremities, Multiple	115	0.8	246	1.0	186	1.0	1,409,485	0.9	5,733	0.9
Body Systems	467	3.4	979	3.8	393	2.1	4,345,135	2.6	15,016	2.4
Multiple Body Parts	1,513	11.0	3,426	13.3	2,615	13.8	34,283,138	20.6	121,424	19.6
Nonclassifiable	70	0.5	210	0.8	140	0.7	3,124,907	1.9	5,461	0.9
SOURCE OF INJURY OR ILLNESS	13,770	100.0%	25,744	100.0%	18,993	100.0%	\$166,181,078	100.0%	621,048	100.0%
Chemical, Chemical Product	268	2.0	386	1.5	239	1.3	712,151	0.4	1,972	0.3
Containers	1,928	14.0	3,466	13.5	2,699	14.2	22,258,660	13.4	101,267	16.3
Furniture, Fixtures	791	5.7	1,309	5.1	953	5.0	7,638,578	4.6	28,361	4.6
Machinery	841	6.1	1,429	5.6	1,086	5.7	8,378,301	5.0	30,134	4.9
Building Materials	355	2.6	607	2.4	480	2.5	4,299,058	2.6	14,751	2.4
Vehicle, Mobile Equipment Parts	115	0.8	212	0.8	174	0.9	1,836,739	1.1	8,717	1.4
Other Parts and Materials	388	2.8	642	2.5	511	2.7	3,179,825	1.9	10,158	1.6
Plants, Animals, Minerals	592	4.3	908	3.5	575	3.0	3,128,797	1.9	7,951	1.3
Person, Injured Worker	1,647	12.0	3,626	14.1	2,410	12.7	24,073,007	14.5	93,333	15.0
Person, Other than Injured Worker	911	6.6	1,727	6.7	1,244	6.6	10,699,733	6.4	49,112	7.9
Floors, Walkways, Ground	1,933	14.0	4,002	15.6	3,120	16.4	33,022,788	19.9	119,000	19.2
Structures, Other Surfaces	488	3.5	821	3.2	617	3.3	4,708,697	2.8	19,010	3.1
Handtools (Nonpowered)	789	5.7	1,177	4.6	908	4.8	3,891,306	2.3	14,696	2.4
Handtools (Powered)	198	1.4	330	1.3	261	1.4	1,603,163	1.0	4,862	0.8
Other Tools, Instruments, Equipment	546	4.0	947	3.7	680	3.6	4,620,029	2.8	17,252	2.8
Highway Vehicle, Motorized	656	4.8	1,485	5.8	1,163	6.1	14,332,472	8.6	43,235	7.0
Nonpowered Plant Vehicles	247	1.8	457	1.8	338	1.8	3,181,583	1.9	15,317	2.5
Other Vehicles	237	1.7	439	1.7	361	1.9	3,520,985	2.1	14,723	2.4
Scrap, Waste, Debris	307	2.2	483	1.9	337	1.8	558,912	0.3	3,047	0.5
Other Sources	533	3.9	1,291	5.0	837	4.4	10,536,294	6.3	24,150	3.9

Notes: Cost and percent totals may not add due to rounding.

# 2011 HAWAII WORKERS' COMPENSATION STATISTICS

OAHU	REPORTED		PROCESSED		WITH COST		COST		DAYS LOST	
OCCUPATION	13,770	100.0%	25,744	100.0%	18,993	100.0%	\$166,181,078	100.0%	621,048	100.0%
Executive, Admin. & Managerial	479	3.5	953	3.7	699	3.7	5,698,428	3.4	14,555	2.3
Professional Specialty	1,116	8.1	2,265	8.8	1,573	8.3	11,289,425	6.8	31,143	5.0
Technical Support	306	2.2	551	2.1	402	2.1	3,094,469	1.9	12,253	2.0
Sales	998	7.3	1,657	6.4	1,136	6.0	9,505,848	5.7	40,753	6.6
Administrative Support	943	6.9	1,905	7.4	1,288	6.8	9,685,245	5.8	36,732	5.9
Services	4,410	32.0	7,868	30.6	5,577	29.4	41,702,526	25.1	179,294	28.9
Agricultural, Forestry & Fishing	504	3.7	936	3.6	718	3.8	5,619,371	3.4	23,916	3.9
Mechanic, Repairer	809	5.9	1,496	5.8	1,157	6.1	10,638,094	6.4	33,114	5.3
Construction Trades	894	6.5	1,759	6.8	1,432	7.5	19,068,425	11.5	62,544	10.1
Precision Production	214	1.6	399	1.6	291	1.5	2,046,518	1.2	8,069	1.3
Operator, Fabricator, Inspector	221	1.6	428	1.7	348	1.8	3,110,016	1.9	9,918	1.6
Transportation, Material Moving	1,016	7.4	2,096	8.1	1,699	9.0	19,133,334	11.5	72,381	11.7
Handler, Helper, Laborer	1,766	12.8	3,131	12.2	2,438	12.8	21,316,556	12.8	91,237	14.7
Nonclassifiable	94	0.7	300	1.2	235	1.2	4,272,823	2.6	5,139	0.8
NATURE OF INJURY OR ILLNESS	13,770	100.0%	25,744	100.0%	18,993	100.0%	\$166,181,078	100.0%	621,048	100.0%
Traumatic Injuries	1,411	10.3	2,643	10.3	1,946	10.3	19,938,953	12.0	78,294	12.6
Fracture	396	2.9	965	3.8	820	4.3	11,703,692	7.0	34,275	5.5
Sprains, Strains	3,483	25.3	7,176	27.9	5,693	30.0	56,089,859	33.8	229,081	36.9
Cut, Laceration	1,894	13.8	2,714	10.5	2,025	10.7	5,295,223	3.2	15,098	2.4
Puncture, Excluding Bites	380	2.8	534	2.1	399	2.1	595,006	0.4	1,778	0.3
Abrasions, Scratches	226	1.6	346	1.3	222	1.2	968,984	0.6	3,020	0.5
Bruises, Contusions	1,263	9.2	2,035	7.9	1,490	7.8	9,369,848	5.6	35,375	5.7
Foreign Bodies	168	1.2	248	1.0	178	0.9	229,278	0.1	1,079	0.2
Heat Burns	304	2.2	441	1.7	288	1.5	859,406	0.5	3,674	0.6
Multiple Injuries/Disorders	385	2.8	750	2.9	573	3.0	6,225,420	3.8	19,234	3.1
Back Pain	598	4.3	1,232	4.8	954	5.0	9,678,842	5.8	45,677	7.4
Pain, Excluding Back	1,418	10.3	2,829	11.0	2,038	10.7	19,165,999	11.5	82,179	13.2
Carpal Tunnel	55	0.4	153	0.6	88	0.5	846,343	0.5	4,221	0.7
Musculoskeletal	75	0.5	194	0.8	123	0.7	1,755,768	1.1	7,080	1.1
Skin Disorders	72	0.5	108	0.4	55	0.3	259,452	0.2	638	0.1
Symptoms	196	1.4	316	1.2	132	0.7	783,696	0.5	1,591	0.3
Mental Disorders	174	1.3	485	1.9	184	1.0	2,606,749	1.6	12,093	2.0
Exposure	152	1.1	175	0.7	51	0.3	27,648	0.0	57	0.0
Other Injuries/Illnesses	1,094	7.9	2,109	8.2	1,487	7.8	14,336,649	8.6	43,530	7.0
Nonclassifiable	26	0.2	291	1.1	247	1.3	5,444,263	3.3	3,074	0.5
EVENT OR EXPOSURE	13,770	100.0%	25,744	100.0%	18,993	100.0%	\$166,181,078	100.0%	621,048	100.0%
Struck Against	1,213	8.8	1,777	6.9	1,248	6.6	4,567,685	2.8	17,960	2.9
Struck By	2,202	16.0	3,408	13.2	2,599	13.7	11,246,783	6.8	40,170	6.5
Caught In, Under, or Between	438	3.2	690	2.7	532	2.8	3,348,955	2.0	13,350	2.2
Rubbed or Abraded	215	1.6	336	1.3	241	1.3	317,904	0.2	1,287	0.2
Other Contact with Object, Equip.	221	1.6	314	1.2	222	1.2	894,812	0.5	3,038	0.5
Falls (From Elevation)	653	4.7	1,476	5.7	1,198	6.3	15,574,857	9.4	54,190	8.7
Falls (To Same Level)	1,571	11.4	3,067	11.9	2,355	12.4	21,184,739	12.8	79,141	12.7
Falls (Other)	61	0.4	114	0.4	95	0.5	1,422,514	0.9	4,069	0.7
Bodily Reaction	1,141	8.3	2,339	9.1	1,758	9.3	16,114,245	9.7	64,030	10.3
Overexertion	3,118	22.6	6,321	24.6	4,974	26.2	52,698,290	31.7	220,968	35.6
Repetitive Motion	285	2.1	701	2.7	420	2.2	4,411,777	2.7	18,011	2.9
Heart Attacks and Strokes	23	0.2	59	0.2	15	0.1	377,526	0.2	491	0.1
Contact (Electrical)	27	0.2	47	0.2	34	0.2	370,555	0.2	1,013	0.2
Contact (Temperature Extremes)	305	2.2	437	1.7	287	1.5	778,478	0.5	3,615	0.6
Exposure (Noise)	14	0.1	57	0.2	28	0.2	133,097	0.1	365	0.1
Exposure (Harmful Substance)	794	5.8	1,308	5.1	626	3.3	2,725,776	1.6	11,033	1.8
Accidents (Highway Vehicle)	336	2.4	837	3.3	650	3.4	9,173,555	5.5	25,594	4.1
Accidents (Non-Highway Vehicle)	81	0.6	182	0.7	155	0.8	2,136,007	1.3	7,731	1.2
Accidents (Other Transportation)	154	1.1	314	1.2	249	1.3	3,410,027	2.1	13,103	2.1
Explosions	24	0.2	39	0.2	27	0.1	435,294	0.3	394	0.1
Assaults, Violent Acts	617	4.5	1,147	4.5	812	4.3	6,235,251	3.8	28,317	4.6
Other Events/Exposures	78	0.6	193	0.8	114	0.6	1,661,390	1.0	1,744	0.3
Nonclassifiable	199	1.5	581	2.3	354	1.9	6,961,561	4.2	11,434	1.8

Notes: Cost and percent totals may not add due to rounding.



# 2011 HAWAII WORKERS' COMPENSATION STATISTICS

MAUI	REPORTED		PROCESSED		WITH COST		COST		DAYS LOST	
INDUSTRY	2,906	100.0%	5,536	100.0%	4,065	100.0%	\$31,532,629	100.0%	116,030	100.0%
Natural Resources & Mining	102	3.5	211	3.8	148	3.6	1,121,911	3.6	2,423	2.1
Construction	120	4.1	301	5.4	244	6.0	3,254,858	10.3	12,141	10.5
Manufacturing	50	1.7	87	1.6	71	1.8	575,292	1.8	2,220	1.9
Wholesale Trade	73	2.5	127	2.3	102	2.5	729,632	2.3	3,017	2.6
Retail Trade	334	11.5	593	10.7	422	10.4	3,532,617	11.2	11,487	9.9
Transportation & Warehousing	153	5.3	320	5.8	254	6.3	2,290,189	7.3	11,573	10.0
Utilities	14	0.5	50	0.9	27	0.7	465,638	1.5	964	0.8
Information	17	0.6	37	0.7	29	0.7	179,178	0.6	423	0.4
Fin, Ins, Real Est, Rent, & Leasing	80	2.8	139	2.5	104	2.6	606,343	1.9	3,032	2.6
Professional, Scientific, & Tech.	18	0.6	38	0.7	30	0.7	467,517	1.5	876	0.8
Management of Companies & Entrpr.	39	1.3	59	1.1	38	0.9	289,637	0.9	1,143	1.0
Administrative, Support, & Waste	207	7.1	392	7.1	291	7.2	3,662,252	11.6	12,719	11.0
Educational Services	35	1.2	68	1.2	52	1.3	249,998	0.8	560	0.5
Health Care & Social Assistance	188	6.5	318	5.7	240	5.9	1,505,212	4.8	5,846	5.0
Arts, Entertainment, & Recreation	55	1.9	95	1.7	73	1.8	434,457	1.4	1,356	1.2
Accommodation and Food Services	789	27.2	1,339	24.2	893	22.0	4,993,161	15.8	19,162	16.5
Other Services, except Public Admin.	101	3.5	197	3.6	152	3.7	1,324,750	4.2	6,109	5.3
Public Administration	531	18.3	1,112	20.1	844	20.8	4,726,769	15.0	20,316	17.5
Other	0	0.0	53	1.0	51	1.3	1,123,218	3.6	663	0.6
PART OF BODY	2,906	100.0%	5,536	100.0%	4,065	100.0%	\$31,532,629	100.0%	116,030	100.0%
Ears	10	0.3	26	0.5	20	0.5	67,312	0.2	0	0.0
Face, Excluding Eyes, Ears	72	2.5	122	2.2	85	2.1	281,836	0.9	856	0.7
Eyes	119	4.1	175	3.2	123	3.0	338,541	1.1	478	0.4
Head, Excluding Ears, Face, Eyes	87	3.0	145	2.6	103	2.5	590,859	1.9	2,443	2.1
Neck	35	1.2	79	1.4	59	1.5	653,056	2.1	2,128	1.8
Trunk, Excluding Back	297	10.2	630	11.4	463	11.4	3,891,023	12.3	14,078	12.1
Back (Spine/Spinal Cord)	426	14.7	954	17.2	749	18.4	8,402,426	26.7	32,812	28.3
Arms	158	5.4	298	5.4	216	5.3	1,139,504	3.6	4,807	4.1
Wrists	84	2.9	169	3.1	121	3.0	932,524	3.0	2,596	2.2
Hands, Excluding Fingers	133	4.6	229	4.1	164	4.0	664,260	2.1	4,023	3.5
Fingers	437	15.0	639	11.5	464	11.4	1,097,936	3.5	3,428	3.0
Upper Extremities, Multiple	39	1.3	81	1.5	59	1.5	688,330	2.2	2,676	2.3
Legs	317	10.9	636	11.5	489	12.0	4,422,301	14.0	16,419	14.2
Ankles	117	4.0	207	3.7	153	3.8	841,238	2.7	4,400	3.8
Feet, Excluding Toes	75	2.6	135	2.4	101	2.5	493,256	1.6	2,608	2.3
Toes	42	1.5	62	1.1	47	1.2	54,112	0.2	483	0.4
Lower Extremities, Multiple	13	0.5	32	0.6	22	0.5	242,100	0.8	1,073	0.9
Body Systems	113	3.9	214	3.9	99	2.4	646,210	2.1	2,233	1.9
Multiple Body Parts	324	11.1	678	12.3	507	12.5	5,855,610	18.6	18,136	15.6
Nonclassifiable	8	0.3	25	0.5	21	0.5	230,195	0.7	353	0.3
SOURCE OF INJURY OR ILLNESS	2,906	100.0%	5,536	100.0%	4,065	100.0%	\$31,532,629	100.0%	116,030	100.0%
Chemical, Chemical Product	69	2.4	107	1.9	68	1.7	102,039	0.3	496	0.4
Containers	434	14.9	831	15.0	646	15.9	4,786,419	15.2	21,404	18.4
Furniture, Fixtures	210	7.2	321	5.8	227	5.6	1,775,762	5.6	7,875	6.8
Machinery	185	6.4	348	6.3	269	6.6	1,989,446	6.3	8,014	6.9
Building Materials	54	1.9	114	2.1	91	2.2	1,175,190	3.7	4,910	4.2
Vehicle, Mobile Equipment Parts	26	0.9	43	0.8	33	0.8	233,547	0.7	1,387	1.2
Other Parts and Materials	44	1.5	104	1.9	80	2.0	829,490	2.6	2,368	2.0
Plants, Animals, Minerals	176	6.1	273	4.9	184	4.5	500,317	1.6	1,662	1.4
Person, Injured Worker	347	11.9	763	13.8	503	12.4	4,497,281	14.3	16,445	14.2
Person, Other than Injured Worker	144	5.0	257	4.6	195	4.8	1,071,589	3.4	4,537	3.9
Floors, Walkways, Ground	413	14.2	864	15.6	663	16.3	6,424,939	20.4	21,958	18.9
Structures, Other Surfaces	96	3.3	175	3.2	121	3.0	813,124	2.6	4,352	3.8
Handtools (Nonpowered)	188	6.5	314	5.7	228	5.6	741,310	2.4	3,776	3.3
Handtools (Powered)	44	1.5	70	1.3	64	1.6	364,648	1.2	1,294	1.1
Other Tools, Instruments, Equipment	106	3.7	183	3.3	145	3.6	541,364	1.7	2,187	1.9
Highway Vehicle, Motorized	85	2.9	201	3.6	151	3.7	1,925,364	6.1	4,831	4.2
Nonpowered Plant Vehicles	53	1.8	93	1.7	75	1.9	693,724	2.2	1,907	1.6
Other Vehicles	41	1.4	101	1.8	83	2.0	1,122,846	3.6	3,064	2.6
Scrap, Waste, Debris	67	2.3	106	1.9	67	1.7	302,232	1.0	72	0.1
Other Sources	124	4.3	268	4.8	172	4.2	1,641,998	5.2	3,491	3.0

Notes: Cost and percent totals may not add due to rounding.



# 2011 HAWAII WORKERS' COMPENSATION STATISTICS

<b>MAUI</b>	<b>REPORTED</b>		<b>PROCESSED</b>		<b>WITH COST</b>		<b>COST</b>		<b>DAYS LOST</b>	
<b>OCCUPATION</b>	<b>2,906</b>	<b>100.0%</b>	<b>5,536</b>	<b>100.0%</b>	<b>4,065</b>	<b>100.0%</b>	<b>\$31,532,629</b>	<b>100.0%</b>	<b>116,030</b>	<b>100.0%</b>
Executive, Admin. & Managerial	90	3.1	191	3.5	125	3.1	1,245,455	4.0	3,834	3.3
Professional Specialty	178	6.1	396	7.2	267	6.6	1,780,046	5.7	4,120	3.6
Technical Support	73	2.5	129	2.3	98	2.4	913,150	2.9	2,830	2.4
Sales	226	7.8	410	7.4	274	6.7	2,053,100	6.5	5,583	4.8
Administrative Support	176	6.1	339	6.1	237	5.8	1,669,298	5.3	6,149	5.3
Services	1,133	39.0	1,925	34.8	1,405	34.6	7,938,571	25.2	35,170	30.3
Agricultural, Forestry & Fishing	177	6.1	346	6.3	255	6.3	1,836,444	5.8	7,948	6.9
Mechanic, Repairer	165	5.7	349	6.3	277	6.8	2,385,916	7.6	6,833	5.9
Construction Trades	150	5.2	337	6.1	272	6.7	4,336,976	13.8	15,168	13.1
Precision Production	31	1.1	75	1.4	62	1.5	393,271	1.3	2,117	1.8
Operator, Fabricator, Inspector	32	1.1	69	1.3	52	1.3	505,725	1.6	1,106	1.0
Transportation, Material Moving	151	5.2	320	5.8	237	5.8	1,973,755	6.3	7,596	6.6
Handler, Helper, Laborer	302	10.4	581	10.5	457	11.2	3,956,781	12.6	17,569	15.1
Nonclassifiable	22	0.8	69	1.3	47	1.2	544,141	1.7	7	0.0
<b>NATURE OF INJURY OR ILLNESS</b>	<b>2,906</b>	<b>100.0%</b>	<b>5,536</b>	<b>100.0%</b>	<b>4,065</b>	<b>100.0%</b>	<b>\$31,532,629</b>	<b>100.0%</b>	<b>116,030</b>	<b>100.0%</b>
Traumatic Injuries	245	8.4	470	8.5	346	8.5	3,195,710	10.1	12,947	11.2
Fracture	89	3.1	222	4.0	185	4.6	3,469,155	11.0	10,640	9.2
Sprains, Strains	804	27.7	1,704	30.8	1,318	32.4	12,102,667	38.4	46,842	40.4
Cut, Laceration	407	14.0	621	11.2	448	11.0	1,092,664	3.5	3,782	3.3
Puncture, Excluding Bites	84	2.9	131	2.4	101	2.5	107,043	0.3	131	0.1
Abrasions, Scratches	52	1.8	75	1.4	51	1.3	81,531	0.3	59	0.1
Bruises, Contusions	270	9.3	473	8.5	336	8.3	1,605,017	5.1	5,033	4.3
Foreign Bodies	44	1.5	62	1.1	39	1.0	249,590	0.8	47	0.0
Heat Burns	61	2.1	109	2.0	69	1.7	101,184	0.3	512	0.4
Multiple Injuries/Disorders	93	3.2	164	3.0	126	3.1	1,286,159	4.1	3,110	2.7
Back Pain	105	3.6	230	4.2	183	4.5	1,387,594	4.4	6,441	5.6
Pain, Excluding Back	253	8.7	483	8.7	354	8.7	2,685,554	8.5	11,836	10.2
Carpal Tunnel	8	0.3	26	0.5	17	0.4	135,140	0.4	791	0.7
Musculoskeletal	18	0.6	39	0.7	26	0.6	327,550	1.0	1,318	1.1
Skin Disorders	8	0.3	18	0.3	11	0.3	8,291	0.0	64	0.1
Symptoms	56	1.9	82	1.5	41	1.0	122,945	0.4	814	0.7
Mental Disorders	35	1.2	90	1.6	25	0.6	373,584	1.2	1,992	1.7
Exposure	28	1.0	32	0.6	25	0.6	8,783	0.0	0	0.0
Other Injuries/Illnesses	244	8.4	464	8.4	328	8.1	2,731,298	8.7	9,284	8.0
Nonclassifiable	2	0.1	41	0.7	36	0.9	461,170	1.5	387	0.3
<b>EVENT OR EXPOSURE</b>	<b>2,906</b>	<b>100.0%</b>	<b>5,536</b>	<b>100.0%</b>	<b>4,065</b>	<b>100.0%</b>	<b>\$31,532,629</b>	<b>100.0%</b>	<b>116,030</b>	<b>100.0%</b>
Struck Against	263	9.1	415	7.5	289	7.1	747,946	2.4	3,233	2.8
Struck By	474	16.3	763	13.8	571	14.0	2,065,862	6.6	7,523	6.5
Caught In, Under, or Between	105	3.6	166	3.0	140	3.4	774,178	2.5	3,658	3.2
Rubbed or Abraded	52	1.8	80	1.5	53	1.3	293,786	0.9	401	0.4
Other Contact with Object, Equip.	41	1.4	61	1.1	40	1.0	166,421	0.5	660	0.6
Falls (From Elevation)	119	4.1	307	5.6	249	6.1	3,339,892	10.6	11,342	9.8
Falls (To Same Level)	335	11.5	642	11.6	475	11.7	3,762,775	11.9	13,163	11.3
Falls (Other)	15	0.5	25	0.5	18	0.4	112,496	0.4	127	0.1
Bodily Reaction	248	8.5	521	9.4	378	9.3	3,022,391	9.6	11,202	9.7
Overexertion	666	22.9	1,398	25.3	1,110	27.3	11,228,800	35.6	47,229	40.7
Repetitive Motion	64	2.2	142	2.6	92	2.3	919,396	2.9	3,658	3.2
Heart Attacks and Strokes	3	0.1	10	0.2	1	0.0	83,385	0.3	116	0.1
Contact (Electrical)	5	0.2	10	0.2	8	0.2	253,412	0.8	366	0.3
Contact (Temperature Extremes)	61	2.1	107	1.9	65	1.6	92,827	0.3	443	0.4
Exposure (Noise)	1	0.0	12	0.2	12	0.3	64,393	0.2	0	0.0
Exposure (Harmful Substance)	196	6.7	322	5.8	182	4.5	441,796	1.4	1,948	1.7
Accidents (Highway Vehicle)	39	1.3	96	1.7	63	1.6	765,314	2.4	1,121	1.0
Accidents (Non-Highway Vehicle)	19	0.7	64	1.2	49	1.2	618,033	2.0	1,815	1.6
Accidents (Other Transportation)	12	0.4	43	0.8	35	0.9	1,014,909	3.2	2,920	2.5
Explosions	6	0.2	9	0.2	9	0.2	101,230	0.3	759	0.7
Assaults, Violent Acts	113	3.9	192	3.5	133	3.3	661,335	2.1	2,517	2.2
Other Events/Exposures	14	0.5	28	0.5	22	0.5	123,686	0.4	97	0.1
Nonclassifiable	55	1.9	123	2.2	71	1.7	878,366	2.8	1,732	1.5

Notes: Cost and percent totals may not add due to rounding.

# 2011 HAWAII WORKERS' COMPENSATION STATISTICS

<b>HAWAII</b>	<b>REPORTED</b>		<b>PROCESSED</b>		<b>WITH COST</b>		<b>COST</b>		<b>DAYS LOST</b>	
<b>INDUSTRY</b>	<b>2,543</b>	<b>100.0%</b>	<b>5,474</b>	<b>100.0%</b>	<b>3,993</b>	<b>100.0%</b>	<b>\$37,278,083</b>	<b>100.0%</b>	<b>167,738</b>	<b>100.0%</b>
Natural Resources & Mining	66	2.6	140	2.6	112	2.8	1,126,760	3.0	5,135	3.1
Construction	154	6.1	389	7.1	319	8.0	5,655,475	15.2	19,771	11.8
Manufacturing	76	3.0	154	2.8	129	3.2	1,602,092	4.3	4,446	2.7
Wholesale Trade	74	2.9	173	3.2	142	3.6	1,687,067	4.5	12,734	7.6
Retail Trade	373	14.7	693	12.7	455	11.4	3,410,284	9.2	18,585	11.1
Transportation & Warehousing	112	4.4	275	5.0	214	5.4	2,176,233	5.8	9,738	5.8
Utilities	23	0.9	67	1.2	47	1.2	286,198	0.8	462	0.3
Information	23	0.9	56	1.0	36	0.9	466,249	1.3	1,659	1.0
Fin, Ins, Real Est, Rent, & Leasing	87	3.4	127	2.3	100	2.5	847,126	2.3	3,086	1.8
Professional, Scientific, & Tech.	34	1.3	68	1.2	53	1.3	501,998	1.4	2,620	1.6
Management of Companies & Entrpr.	73	2.9	109	2.0	68	1.7	435,824	1.2	1,512	0.9
Administrative, Support, & Waste	193	7.6	375	6.9	295	7.4	3,444,440	9.2	18,772	11.2
Educational Services	55	2.2	105	1.9	80	2.0	736,788	2.0	1,735	1.0
Health Care & Social Assistance	227	8.9	435	8.0	304	7.6	2,754,493	7.4	15,359	9.2
Arts, Entertainment, & Recreation	53	2.1	83	1.5	67	1.7	483,229	1.3	2,105	1.3
Accommodation and Food Services	345	13.6	583	10.7	423	10.6	3,250,262	8.7	14,867	8.9
Other Services, except Public Admin.	72	2.8	134	2.5	100	2.5	946,334	2.5	4,948	3.0
Public Administration	494	19.4	1,447	26.4	998	25.0	6,899,518	18.5	29,976	17.9
Other	9	0.4	61	1.1	51	1.3	567,713	1.5	228	0.1
<b>PART OF BODY</b>	<b>2,543</b>	<b>100.0%</b>	<b>5,474</b>	<b>100.0%</b>	<b>3,993</b>	<b>100.0%</b>	<b>\$37,278,083</b>	<b>100.0%</b>	<b>167,738</b>	<b>100.0%</b>
Ears	9	0.4	26	0.5	19	0.5	67,391	0.2	105	0.1
Face, Excluding Eyes, Ears	74	2.9	109	2.0	73	1.8	165,692	0.4	580	0.4
Eyes	94	3.7	137	2.5	94	2.4	153,850	0.4	47	0.0
Head, Excluding Ears, Face, Eyes	84	3.3	164	3.0	124	3.1	1,343,370	3.6	5,182	3.1
Neck	34	1.3	96	1.8	74	1.9	493,919	1.3	1,870	1.1
Trunk, Excluding Back	242	9.5	598	10.9	449	11.2	5,552,025	14.9	26,034	15.5
Back (Spine/Spinal Cord)	406	16.0	1,009	18.4	795	19.9	8,678,026	23.3	42,813	25.5
Arms	125	4.9	230	4.2	163	4.1	803,645	2.2	4,790	2.9
Wrists	76	3.0	198	3.6	136	3.4	1,659,937	4.5	6,371	3.8
Hands, Excluding Fingers	116	4.6	201	3.7	131	3.3	480,076	1.3	2,797	1.7
Fingers	303	11.9	501	9.2	379	9.5	1,543,922	4.1	5,056	3.0
Upper Extremities, Multiple	39	1.5	78	1.4	59	1.5	492,787	1.3	2,059	1.2
Legs	289	11.4	602	11.0	455	11.4	4,707,062	12.6	22,872	13.6
Ankles	105	4.1	187	3.4	141	3.5	911,809	2.5	5,448	3.3
Feet, Excluding Toes	67	2.6	116	2.1	85	2.1	402,349	1.1	2,488	1.5
Toes	21	0.8	42	0.8	29	0.7	78,443	0.2	180	0.1
Lower Extremities, Multiple	18	0.7	42	0.8	33	0.8	309,777	0.8	726	0.4
Body Systems	130	5.1	296	5.4	124	3.1	1,074,061	2.9	5,590	3.3
Multiple Body Parts	295	11.6	786	14.4	589	14.8	7,332,804	19.7	31,554	18.8
Nonclassifiable	16	0.6	56	1.0	41	1.0	1,027,138	2.8	1,176	0.7
<b>SOURCE OF INJURY OR ILLNESS</b>	<b>2,543</b>	<b>100.0%</b>	<b>5,474</b>	<b>100.0%</b>	<b>3,993</b>	<b>100.0%</b>	<b>\$37,278,083</b>	<b>100.0%</b>	<b>167,738</b>	<b>100.0%</b>
Chemical, Chemical Product	46	1.8	90	1.6	52	1.3	269,839	0.7	1,162	0.7
Containers	332	13.1	700	12.8	516	12.9	5,069,721	13.6	25,790	15.4
Furniture, Fixtures	141	5.5	250	4.6	178	4.5	1,327,668	3.6	9,107	5.4
Machinery	153	6.0	297	5.4	221	5.5	1,822,805	4.9	8,223	4.9
Building Materials	67	2.6	136	2.5	107	2.7	1,075,115	2.9	4,612	2.8
Vehicle, Mobile Equipment Parts	23	0.9	60	1.1	49	1.2	527,735	1.4	2,196	1.3
Other Parts and Materials	66	2.6	128	2.3	103	2.6	438,882	1.2	2,659	1.6
Plants, Animals, Minerals	149	5.9	269	4.9	183	4.6	1,181,094	3.2	7,746	4.6
Person, Injured Worker	320	12.6	788	14.4	512	12.8	5,493,048	14.7	26,516	15.8
Person, Other than Injured Worker	152	6.0	353	6.5	252	6.3	2,025,595	5.4	9,893	5.9
Floors, Walkways, Ground	404	15.9	897	16.4	692	17.3	8,246,005	22.1	31,199	18.6
Structures, Other Surfaces	72	2.8	168	3.1	137	3.4	1,132,446	3.0	4,587	2.7
Handtools (Nonpowered)	153	6.0	251	4.6	196	4.9	565,453	1.5	2,859	1.7
Handtools (Powered)	45	1.8	81	1.5	67	1.7	517,468	1.4	1,402	0.8
Other Tools, Instruments, Equipment	85	3.3	153	2.8	114	2.9	578,097	1.6	2,429	1.5
Highway Vehicle, Motorized	108	4.3	332	6.1	245	6.1	2,656,498	7.1	12,202	7.3
Nonpowered Plant Vehicles	24	0.9	70	1.3	51	1.3	413,723	1.1	3,052	1.8
Other Vehicles	43	1.7	92	1.7	77	1.9	799,129	2.1	3,053	1.8
Scrap, Waste, Debris	64	2.5	88	1.6	64	1.6	304,781	0.8	41	0.0
Other Sources	96	3.8	271	5.0	177	4.4	2,832,981	7.6	9,010	5.4

Notes: Cost and percent totals may not add due to rounding.

# 2011 HAWAII WORKERS' COMPENSATION STATISTICS

<b>HAWAII</b>	<b>REPORTED</b>		<b>PROCESSED</b>		<b>WITH COST</b>		<b>COST</b>		<b>DAYS LOST</b>	
<b>OCCUPATION</b>	<b>2,543</b>	<b>100.0%</b>	<b>5,474</b>	<b>100.0%</b>	<b>3,993</b>	<b>100.0%</b>	<b>\$37,278,083</b>	<b>100.0%</b>	<b>167,738</b>	<b>100.0%</b>
Executive, Admin. & Managerial	103	4.1	205	3.7	154	3.9	1,688,478	4.5	6,667	4.0
Professional Specialty	192	7.6	463	8.5	332	8.3	2,507,566	6.7	9,548	5.7
Technical Support	58	2.3	128	2.3	84	2.1	536,676	1.4	1,108	0.7
Sales	206	8.1	365	6.7	239	6.0	2,065,892	5.5	8,844	5.3
Administrative Support	163	6.4	392	7.2	257	6.4	1,610,544	4.3	6,549	3.9
Services	733	28.8	1,516	27.7	1,077	27.0	8,150,227	21.9	41,254	24.6
Agricultural, Forestry & Fishing	230	9.0	449	8.2	338	8.5	2,913,748	7.8	18,729	11.2
Mechanic, Repairer	157	6.2	315	5.8	241	6.0	2,259,535	6.1	7,816	4.7
Construction Trades	150	5.9	346	6.3	273	6.8	4,523,508	12.1	16,523	9.9
Precision Production	53	2.1	96	1.8	77	1.9	467,317	1.3	2,926	1.7
Operator, Fabricator, Inspector	32	1.3	80	1.5	65	1.6	664,886	1.8	2,404	1.4
Transportation, Material Moving	121	4.8	387	7.1	305	7.6	3,941,255	10.6	21,604	12.9
Handler, Helper, Laborer	312	12.3	643	11.8	481	12.1	4,521,254	12.1	22,477	13.4
Nonclassifiable	33	1.3	89	1.6	70	1.8	1,427,197	3.8	1,289	0.8
<b>NATURE OF INJURY OR ILLNESS</b>	<b>2,543</b>	<b>100.0%</b>	<b>5,474</b>	<b>100.0%</b>	<b>3,993</b>	<b>100.0%</b>	<b>\$37,278,083</b>	<b>100.0%</b>	<b>167,738</b>	<b>100.0%</b>
Traumatic Injuries	229	9.0	516	9.4	375	9.4	4,588,778	12.3	20,035	11.9
Fracture	94	3.7	267	4.9	218	5.5	3,308,758	8.9	10,499	6.3
Sprains, Strains	642	25.2	1,549	28.3	1,192	29.9	11,286,432	30.3	59,878	35.7
Cut, Laceration	332	13.1	520	9.5	406	10.2	1,438,091	3.9	4,438	2.7
Puncture, Excluding Bites	64	2.5	91	1.7	68	1.7	144,575	0.4	916	0.6
Abrasions, Scratches	38	1.5	65	1.2	42	1.1	250,795	0.7	871	0.5
Bruises, Contusions	199	7.8	357	6.5	244	6.1	1,600,145	4.3	8,442	5.0
Foreign Bodies	41	1.6	52	1.0	39	1.0	21,976	0.1	2	0.0
Heat Burns	52	2.0	78	1.4	55	1.4	221,789	0.6	628	0.4
Multiple Injuries/Disorders	92	3.6	209	3.8	165	4.1	1,626,279	4.4	6,519	3.9
Back Pain	130	5.1	298	5.4	235	5.9	2,646,011	7.1	13,983	8.3
Pain, Excluding Back	217	8.5	511	9.3	365	9.1	3,713,113	10.0	16,777	10.0
Carpal Tunnel	8	0.3	33	0.6	16	0.4	253,545	0.7	1,595	1.0
Musculoskeletal	3	0.1	28	0.5	24	0.6	407,984	1.1	2,352	1.4
Skin Disorders	15	0.6	25	0.5	12	0.3	47,538	0.1	474	0.3
Symptoms	42	1.7	84	1.5	33	0.8	227,891	0.6	1,051	0.6
Mental Disorders	65	2.6	167	3.1	63	1.6	713,854	1.9	4,767	2.8
Exposure	21	0.8	25	0.5	15	0.4	4,540	0.0	10	0.0
Other Injuries/Illnesses	255	10.0	536	9.8	375	9.4	3,605,695	9.7	14,069	8.4
Nonclassifiable	4	0.2	63	1.2	51	1.3	1,170,294	3.1	432	0.3
<b>EVENT OR EXPOSURE</b>	<b>2,543</b>	<b>100.0%</b>	<b>5,474</b>	<b>100.0%</b>	<b>3,993</b>	<b>100.0%</b>	<b>\$37,278,083</b>	<b>100.0%</b>	<b>167,738</b>	<b>100.0%</b>
Struck Against	197	7.8	322	5.9	236	5.9	1,104,462	3.0	5,418	3.2
Struck By	386	15.2	687	12.6	523	13.1	2,765,528	7.4	11,610	6.9
Caught In, Under, or Between	69	2.7	136	2.5	107	2.7	774,013	2.1	3,035	1.8
Rubbed or Abraded	49	1.9	70	1.3	55	1.4	143,462	0.4	114	0.1
Other Contact with Object, Equip.	49	1.9	69	1.3	44	1.1	147,283	0.4	805	0.5
Falls (From Elevation)	145	5.7	346	6.3	281	7.0	4,627,437	12.4	14,723	8.8
Falls (To Same Level)	307	12.1	642	11.7	476	11.9	4,225,943	11.3	20,464	12.2
Falls (Other)	13	0.5	25	0.5	16	0.4	134,533	0.4	749	0.5
Bodily Reaction	221	8.7	471	8.6	351	8.8	3,498,739	9.4	16,763	10.0
Overexertion	555	21.8	1,355	24.8	1,033	25.9	10,789,222	28.9	57,851	34.5
Repetitive Motion	34	1.3	127	2.3	79	2.0	929,883	2.5	4,917	2.9
Heart Attacks and Strokes	2	0.1	19	0.4	7	0.2	146,273	0.4	370	0.2
Contact (Electrical)	10	0.4	18	0.3	15	0.4	65,068	0.2	94	0.1
Contact (Temperature Extremes)	54	2.1	78	1.4	54	1.4	252,634	0.7	592	0.4
Exposure (Noise)	3	0.1	10	0.2	7	0.2	31,565	0.1	0	0.0
Exposure (Harmful Substance)	191	7.5	349	6.4	169	4.2	898,268	2.4	5,247	3.1
Accidents (Highway Vehicle)	55	2.2	186	3.4	138	3.5	1,485,666	4.0	6,838	4.1
Accidents (Non-Highway Vehicle)	16	0.6	62	1.1	52	1.3	713,708	1.9	3,980	2.4
Accidents (Other Transportation)	16	0.6	43	0.8	34	0.9	594,372	1.6	1,126	0.7
Explosions	6	0.2	11	0.2	10	0.3	30,944	0.1	44	0.0
Assaults, Violent Acts	113	4.4	254	4.6	178	4.5	1,496,889	4.0	7,446	4.4
Other Events/Exposures	12	0.5	50	0.9	31	0.8	235,045	0.6	790	0.5
Nonclassifiable	40	1.6	144	2.6	97	2.4	2,187,146	5.9	4,762	2.8

Notes: Cost and percent totals may not add due to rounding.

# 2011 HAWAII WORKERS' COMPENSATION STATISTICS

<b>KAUAI</b>	<b>REPORTED</b>		<b>PROCESSED</b>		<b>WITH COST</b>		<b>COST</b>		<b>DAYS LOST</b>	
<b>INDUSTRY</b>	<b>1,296</b>	<b>100.0%</b>	<b>2,361</b>	<b>100.0%</b>	<b>1,635</b>	<b>100.0%</b>	<b>\$11,788,325</b>	<b>100.0%</b>	<b>40,849</b>	<b>100.0%</b>
Natural Resources & Mining	33	2.6	90	3.8	51	3.1	461,513	3.9	2,272	5.6
Construction	63	4.9	149	6.3	110	6.7	1,921,973	16.3	5,367	13.1
Manufacturing	13	1.0	30	1.3	23	1.4	361,315	3.1	404	1.0
Wholesale Trade	19	1.5	42	1.8	35	2.1	223,650	1.9	939	2.3
Retail Trade	184	14.2	291	12.3	179	11.0	703,851	6.0	2,797	6.9
Transportation & Warehousing	55	4.2	109	4.6	72	4.4	432,914	3.7	2,602	6.4
Utilities	13	1.0	17	0.7	10	0.6	14,114	0.1	35	0.1
Information	7	0.5	13	0.6	7	0.4	54,099	0.5	175	0.4
Fin, Ins, Real Est, Rent, & Leasing	47	3.6	71	3.0	51	3.1	368,115	3.1	1,746	4.3
Professional, Scientific, & Tech.	17	1.3	31	1.3	24	1.5	95,642	0.8	1,083	2.7
Management of Companies & Entrpr.	31	2.4	42	1.8	22	1.4	148,489	1.3	824	2.0
Administrative, Support, & Waste	123	9.5	181	7.7	135	8.3	1,576,528	13.4	5,234	12.8
Educational Services	13	1.0	16	0.7	10	0.6	18,071	0.2	8	0.0
Health Care & Social Assistance	72	5.6	125	5.3	85	5.2	601,160	5.1	1,766	4.3
Arts, Entertainment, & Recreation	38	2.9	61	2.6	47	2.9	776,285	6.6	690	1.7
Accommodation and Food Services	324	25.0	516	21.9	364	22.3	1,330,744	11.3	4,917	12.0
Other Services, except Public Admin.	41	3.2	73	3.1	56	3.4	269,589	2.3	1,135	2.8
Public Administration	200	15.4	489	20.7	340	20.8	2,287,487	19.4	8,855	21.7
Other	3	0.2	15	0.6	14	0.9	142,786	1.2	0	0.0
<b>PART OF BODY</b>	<b>1,296</b>	<b>100.0%</b>	<b>2,361</b>	<b>100.0%</b>	<b>1,635</b>	<b>100.0%</b>	<b>\$11,788,325</b>	<b>100.0%</b>	<b>40,849</b>	<b>100.0%</b>
Ears	9	0.7	9	0.4	7	0.4	4,940	0.0	3	0.0
Face, Excluding Eyes, Ears	42	3.2	59	2.5	41	2.5	105,731	0.9	373	0.9
Eyes	49	3.8	73	3.1	53	3.2	31,161	0.3	9	0.0
Head, Excluding Ears, Face, Eyes	30	2.3	51	2.2	38	2.3	91,538	0.8	37	0.1
Neck	14	1.1	32	1.4	23	1.4	588,517	5.0	(85)	-0.2
Trunk, Excluding Back	142	11.0	263	11.1	189	11.6	1,843,747	15.6	7,775	19.0
Back (Spine/Spinal Cord)	173	13.4	373	15.8	263	16.1	2,184,368	18.5	9,182	22.5
Arms	70	5.4	111	4.7	81	5.0	342,594	2.9	815	2.0
Wrists	40	3.1	84	3.6	56	3.4	311,219	2.6	1,333	3.3
Hands, Excluding Fingers	64	4.9	87	3.7	63	3.9	144,641	1.2	712	1.7
Fingers	181	14.0	255	10.8	189	11.6	495,378	4.2	1,686	4.1
Upper Extremities, Multiple	15	1.2	30	1.3	21	1.3	24,657	0.2	27	0.1
Legs	134	10.3	252	10.7	179	11.0	1,223,594	10.4	6,594	16.1
Ankles	55	4.2	87	3.7	65	4.0	362,759	3.1	760	1.9
Feet, Excluding Toes	30	2.3	70	3.0	54	3.3	323,361	2.7	1,288	3.2
Toes	12	0.9	26	1.1	16	1.0	55,301	0.5	352	0.9
Lower Extremities, Multiple	14	1.1	27	1.1	19	1.2	117,845	1.0	441	1.1
Body Systems	72	5.6	150	6.4	54	3.3	609,291	5.2	2,393	5.9
Multiple Body Parts	148	11.4	317	13.4	221	13.5	2,911,264	24.7	7,154	17.5
Nonclassifiable	2	0.2	5	0.2	3	0.2	16,419	0.1	0	0.0
<b>SOURCE OF INJURY OR ILLNESS</b>	<b>1,296</b>	<b>100.0%</b>	<b>2,361</b>	<b>100.0%</b>	<b>1,635</b>	<b>100.0%</b>	<b>\$11,788,325</b>	<b>100.0%</b>	<b>40,849</b>	<b>100.0%</b>
Chemical, Chemical Product	30	2.3	42	1.8	28	1.7	82,477	0.7	211	0.5
Containers	149	11.5	309	13.1	210	12.8	1,657,193	14.1	5,897	14.4
Furniture, Fixtures	72	5.6	129	5.5	94	5.7	398,321	3.4	1,633	4.0
Machinery	81	6.3	128	5.4	87	5.3	633,996	5.4	2,491	6.1
Building Materials	39	3.0	52	2.2	40	2.5	238,851	2.0	913	2.2
Vehicle, Mobile Equipment Parts	13	1.0	23	1.0	17	1.0	25,725	0.2	44	0.1
Other Parts and Materials	27	2.1	44	1.9	36	2.2	120,947	1.0	477	1.2
Plants, Animals, Minerals	83	6.4	131	5.6	92	5.6	317,667	2.7	1,543	3.8
Person, Injured Worker	186	14.4	360	15.3	220	13.5	1,761,764	14.9	6,997	17.1
Person, Other than Injured Worker	64	4.9	120	5.1	75	4.6	307,972	2.6	911	2.2
Floors, Walkways, Ground	186	14.4	363	15.4	271	16.6	2,900,514	24.6	9,827	24.1
Structures, Other Surfaces	46	3.6	72	3.1	55	3.4	404,267	3.4	1,656	4.1
Handtools (Nonpowered)	86	6.6	127	5.4	91	5.6	271,674	2.3	1,364	3.3
Handtools (Powered)	22	1.7	39	1.7	28	1.7	114,065	1.0	696	1.7
Other Tools, Instruments, Equipment	44	3.4	68	2.9	46	2.8	380,574	3.2	1,274	3.1
Highway Vehicle, Motorized	48	3.7	111	4.7	78	4.8	517,276	4.4	1,742	4.3
Nonpowered Plant Vehicles	22	1.7	43	1.8	32	2.0	217,036	1.8	1,006	2.5
Other Vehicles	12	0.9	34	1.4	27	1.7	255,529	2.2	829	2.0
Scrap, Waste, Debris	39	3.0	59	2.5	45	2.8	97,917	0.8	372	0.9
Other Sources	47	3.6	107	4.5	63	3.9	1,084,560	9.2	966	2.4

Notes: Cost and percent totals may not add due to rounding.

# 2011 HAWAII WORKERS' COMPENSATION STATISTICS

<b>KAUAI</b>	<b>REPORTED</b>		<b>PROCESSED</b>		<b>WITH COST</b>		<b>COST</b>		<b>DAYS LOST</b>	
<b>OCCUPATION</b>	<b>1,296</b>	<b>100.0%</b>	<b>2,361</b>	<b>100.0%</b>	<b>1,635</b>	<b>100.0%</b>	<b>\$11,788,325</b>	<b>100.0%</b>	<b>40,849</b>	<b>100.0%</b>
Executive, Admin. & Managerial	37	2.9	70	3.0	43	2.6	605,822	5.1	1,534	3.8
Professional Specialty	59	4.6	136	5.8	93	5.7	549,903	4.7	1,394	3.4
Technical Support	25	1.9	48	2.0	35	2.1	256,904	2.2	517	1.3
Sales	90	6.9	149	6.3	87	5.3	517,507	4.4	1,976	4.8
Administrative Support	82	6.3	153	6.5	83	5.1	323,171	2.7	1,635	4.0
Services	456	35.2	753	31.9	542	33.2	3,441,318	29.2	11,581	28.4
Agricultural, Forestry & Fishing	114	8.8	217	9.2	152	9.3	844,999	7.2	4,049	9.9
Mechanic, Repairer	79	6.1	143	6.1	111	6.8	532,053	4.5	1,677	4.1
Construction Trades	86	6.6	170	7.2	121	7.4	1,984,049	16.8	5,977	14.6
Precision Production	27	2.1	37	1.6	26	1.6	113,407	1.0	556	1.4
Operator, Fabricator, Inspector	23	1.8	39	1.7	25	1.5	118,969	1.0	559	1.4
Transportation, Material Moving	72	5.6	144	6.1	112	6.9	965,477	8.2	4,919	12.0
Handler, Helper, Laborer	143	11.0	286	12.1	195	11.9	1,435,610	12.2	4,475	11.0
Nonclassifiable	3	0.2	16	0.7	10	0.6	99,136	0.8	0	0.0
<b>NATURE OF INJURY OR ILLNESS</b>	<b>1,296</b>	<b>100.0%</b>	<b>2,361</b>	<b>100.0%</b>	<b>1,635</b>	<b>100.0%</b>	<b>\$11,788,325</b>	<b>100.0%</b>	<b>40,849</b>	<b>100.0%</b>
Traumatic Injuries	104	8.0	216	9.2	159	9.7	1,004,082	8.5	5,263	12.9
Fracture	36	2.8	97	4.1	76	4.7	935,670	7.9	3,363	8.2
Sprains, Strains	333	25.7	651	27.6	487	29.8	4,026,962	34.2	16,548	40.5
Cut, Laceration	191	14.7	248	10.5	196	12.0	338,101	2.9	1,000	2.5
Puncture, Excluding Bites	30	2.3	45	1.9	31	1.9	29,474	0.3	25	0.1
Abrasions, Scratches	26	2.0	37	1.6	23	1.4	26,231	0.2	80	0.2
Bruises, Contusions	111	8.6	196	8.3	131	8.0	671,555	5.7	2,188	5.4
Foreign Bodies	25	1.9	37	1.6	26	1.6	12,905	0.1	6	0.0
Heat Burns	32	2.5	43	1.8	32	2.0	807,894	6.9	478	1.2
Multiple Injuries/Disorders	48	3.7	81	3.4	62	3.8	475,914	4.0	1,013	2.5
Back Pain	49	3.8	89	3.8	61	3.7	420,956	3.6	2,340	5.7
Pain, Excluding Back	108	8.3	222	9.4	148	9.1	1,058,839	9.0	4,127	10.1
Carpal Tunnel	4	0.3	9	0.4	4	0.2	19,968	0.2	0	0.0
Musculoskeletal	1	0.1	9	0.4	5	0.3	5,645	0.1	0	0.0
Skin Disorders	8	0.6	12	0.5	2	0.1	303	0.0	0	0.0
Symptoms	25	1.9	37	1.6	14	0.9	8,313	0.1	21	0.1
Mental Disorders	44	3.4	100	4.2	30	1.8	338,891	2.9	2,207	5.4
Exposure	3	0.2	4	0.2	3	0.2	1,586	0.0	0	0.0
Other Injuries/Illnesses	117	9.0	217	9.2	138	8.4	1,481,687	12.6	2,159	5.3
Nonclassifiable	1	0.1	11	0.5	7	0.4	123,349	1.1	31	0.1
<b>EVENT OR EXPOSURE</b>	<b>1,296</b>	<b>100.0%</b>	<b>2,361</b>	<b>100.0%</b>	<b>1,635</b>	<b>100.0%</b>	<b>\$11,788,325</b>	<b>100.0%</b>	<b>40,849</b>	<b>100.0%</b>
Struck Against	117	9.0	167	7.1	125	7.7	936,628	8.0	1,496	3.7
Struck By	198	15.3	307	13.0	226	13.8	935,423	7.9	3,386	8.3
Caught In, Under, or Between	41	3.2	68	2.9	48	2.9	160,137	1.4	326	0.8
Rubbed or Abraded	31	2.4	49	2.1	33	2.0	19,305	0.2	69	0.2
Other Contact with Object, Equip.	23	1.8	29	1.2	19	1.2	18,074	0.2	24	0.1
Falls (From Elevation)	60	4.6	136	5.8	110	6.7	992,934	8.4	5,076	12.4
Falls (To Same Level)	156	12.0	279	11.8	209	12.8	1,649,672	14.0	5,320	13.0
Falls (Other)	2	0.2	4	0.2	3	0.2	71,928	0.6	384	0.9
Bodily Reaction	127	9.8	218	9.2	160	9.8	1,138,839	9.7	3,780	9.3
Overexertion	265	20.5	562	23.8	388	23.7	3,122,812	26.5	14,412	35.3
Repetitive Motion	21	1.6	47	2.0	25	1.5	195,657	1.7	737	1.8
Heart Attacks and Strokes	0	0.0	3	0.1	1	0.1	734	0.0	0	0.0
Contact (Electrical)	4	0.3	8	0.3	6	0.4	225,265	1.9	0	0.0
Contact (Temperature Extremes)	33	2.6	42	1.8	30	1.8	16,767	0.1	45	0.1
Exposure (Noise)	1	0.1	1	0.0	0	0.0	0	0.0	0	0.0
Exposure (Harmful Substance)	107	8.3	174	7.4	82	5.0	307,273	2.6	2,130	5.2
Accidents (Highway Vehicle)	20	1.5	55	2.3	37	2.3	258,114	2.2	579	1.4
Accidents (Non-Highway Vehicle)	11	0.9	23	1.0	14	0.9	203,001	1.7	921	2.3
Accidents (Other Transportation)	4	0.3	16	0.7	15	0.9	165,578	1.4	146	0.4
Explosions	1	0.1	3	0.1	3	0.2	55,850	0.5	72	0.2
Assaults, Violent Acts	55	4.2	105	4.5	67	4.1	324,522	2.8	1,065	2.6
Other Events/Exposures	5	0.4	14	0.6	7	0.4	800,230	6.8	364	0.9
Nonclassifiable	14	1.1	51	2.2	27	1.7	189,582	1.6	517	1.3

Notes: Cost and percent totals may not add due to rounding.

## 2011 HAWAII REPORTED FATALITIES

	STATE 24	% of TOTAL 100.0%	OAHU 16	HAWAII COUNTY 4	MAUI COUNTY 2	KAUAI 2
<b>TOTAL</b>						
<b>SEX</b>						
Male	24	100.0	16	4	2	2
Female	0	0.0	0	0	0	0
<b>MARITAL STATUS</b>						
Married	11	45.8	9	1	1	0
Single	13	54.2	7	3	1	2
<b>AGE</b>						
18-24	2	8.3	2	0	0	0
25-34	5	20.8	2	1	1	1
35-44	6	25.0	2	2	1	1
45-54	6	25.0	6	0	0	0
55-64	3	12.5	3	0	0	0
Over 64	2	8.3	1	1	0	0
<b>INDUSTRY</b>						
Construction	3	12.5	1	1	0	1
Manufacturing	1	4.2	0	1	0	0
Wholesale Trade	1	4.2	1	0	0	0
Transportation & Warehousing	2	8.3	1	0	1	0
Administrative, Support, & Waste	11	45.8	8	1	1	1
Educational Services	1	4.2	1	0	0	0
Health Care & Social Assistance	1	4.2	1	0	0	0
Arts, Entertainment, and Recreation	1	4.2	1	0	0	0
Accommodation and Food Services	1	4.2	0	1	0	0
Other Services, except Public Admin.	1	4.2	1	0	0	0
Public Administration	1	4.2	1	0	0	0
<b>OCCUPATION</b>						
Executive, Admin, & Managerial	3	12.5	2	0	0	1
Sales	1	4.2	0	1	0	0
Protective Service	1	4.2	1	0	0	0
Services	4	16.7	3	1	0	0
Agricultural, Forestry & Fishing	2	8.3	1	0	1	0
Mechanic, Repairer	1	4.2	1	0	0	0
Construction Trades	2	8.3	0	1	0	1
Machine Operator, Assembler, Inspector	4	16.7	4	0	0	0
Transportation, Material Moving	2	8.3	0	1	1	0
Handler, Helper, Laborer	4	16.7	4	0	0	0
<b>CAUSE</b>						
Struck By	1	4.2	1	0	0	0
Falls	5	20.8	3	1	1	0
Bodily Reaction	3	12.5	1	1	0	1
Heart Attacks and Strokes	4	16.7	4	0	0	0
Exposure (Harmful Substance)	1	4.2	0	0	0	1
Transportation Accidents	5	20.8	2	2	1	0
Explosions	5	20.8	5	0	0	0

Note: Percentages may not add due to rounding.

## 2011 HEARINGS AND DECISIONS ISSUED

	STATE	OAHU	EAST HAWAII	WEST HAWAII	MAUI	KAUAI
<b>HEARINGS</b>	1,956	1,036*	179	180	374	187
<b>DECISIONS ISSUED</b>	6,944	4,443*	696	426	1,011	368
Act 59 Settlement	479	304	38	34	90	13
Attorney Fees	1,373	941	134	59	163	76
Denial	221	137	16	21	26	21
Disfigurement	518	270	77	67	62	42
Fatality	8	7	0	0	1	0
Medical	666	342	75	66	134	49
Permanent Partial	1,811	1,312	121	104	232	42
Permanent Total	14	12	1	0	0	1
Temporary Partial	5	4	1	0	0	0
Temporary Total	339	184	50	16	34	55
Benefit Adjustments	367	266	47	6	38	10
Other	1,143	664	136	53	231	59

\* Includes East Hawaii cases conducted by Oahu hearings officers remotely via the webcam.

## WORKERS' COMPENSATION MAXIMUM WEEKLY WAGE BASE AND MAXIMUM WEEKLY BENEFIT AMOUNT HISTORY

Year	Maximum Weekly Wage Base	Maximum Weekly Benefit Amount	Year	Maximum Weekly Wage Base	Maximum Weekly Benefit Amount
1976	\$250.50	\$167.00	1994	\$721.46	\$481.00
1977	\$268.50	\$179.00	1995	\$736.46	\$491.00
1978	\$283.50	\$189.00	1996	\$743.96	\$496.00
1979	\$300.00	\$200.00	1997	\$751.46	\$501.00
1980	\$322.50	\$215.00	1998	\$761.96	\$508.00
1981	\$352.50	\$235.00	1999	\$778.46	\$519.00
1982	\$378.00	\$252.00	2000	\$793.46	\$529.00
1983	\$399.00	\$266.00	2001	\$820.46	\$547.00
1984	\$421.50	\$281.00	2002	\$845.96	\$564.00
1985	\$436.50	\$291.00	2003	\$869.96	\$580.00
1986	\$448.50	\$299.00	2004	\$893.96	\$596.00
1987	\$477.00	\$318.00	2005	\$932.95	\$622.00
1988	\$501.00	\$334.00	2006	\$980.95	\$654.00
1989	\$537.00	\$358.00	2007	\$1,016.95	\$678.00
1990	\$574.47	\$383.00	2008	\$1,043.95	\$696.00
1991	\$617.97	\$412.00	2009	\$1,087.45	\$725.00
1992	\$655.47	\$437.00	2010	\$1,117.44	\$745.00
1993	\$689.97	\$460.00	2011	\$1,096.45	\$731.00



## 2011 DIGEST OF THE WORKERS' COMPENSATION LAW

<b>Purpose</b>	To provide medical, rehabilitation, income, and indemnity benefits to workers suffering work-connected injuries, or in the event of death, income and indemnity benefits to their dependents.
<b>Coverage</b>	All workers except: Federal government workers. Workers for nonprofit organizations if in voluntary or unpaid capacity. Students working for a school, college, or university in return for board, lodging, or tuition. Ordained members of the church. Certain domestic workers. Certain 25% stockholders of a corporation. Owners with 50% or more of a corporation. Real estate salespersons or brokers paid solely by commission. Certain 50% distributional interest members of a limited liability company. Certain 50% partners of a limited liability partnership. Partners of a partnership. Sole Proprietors.
<b>Eligibility Requirements for Benefits</b>	Employee suffering personal injury by accident arising out of and in the course of employment, or by disease proximately caused by or resulting from the nature of the employment.
<b>Disqualification from Benefits</b>	Injury incurred by willful self-infliction or to another by actively engaging in any unprovoked non-work related physical altercation other than in self-defense or by intoxication. Mental stress claims resulting solely from disciplinary action taken in good faith by employer.
<b>Waiting Period</b>	Three days.
<b>Weekly Benefits</b>	66-2/3% of the worker's average weekly wages for permanent total, partial, and temporary total disabilities. 66-2/3% of difference of wages before and after injury for temporary partial disability.
<b>Benefit Provisions - 2011</b>	Minimum weekly benefits - \$183.00 Maximum weekly benefits - \$731.00 Maximum weekly amount used to compute weekly benefits for surviving spouse - \$1,096.45 Funeral expenses - \$7,310.00 Burial expenses - \$3,655.00
<b>Duration</b>	Medical - as reasonably needed or as the nature or injury requires. Death - various duration for beneficiaries. Temporary total disability - duration of the disability. Permanent total disability - for life.
<b>Appeal Provisions</b>	Within 20 days after a decision has been sent to parties concerned.
<b>Statute of Limitation for Filing a Claim</b>	Within two years after date of injury in which the effects have manifest and within five years after date of accident or occurrence of injury.
<b>Employer's Penalties and Fines</b>	\$250 or \$10 for each employee each day for failure to give security for compensation. Up to \$5,000 for refusing or neglecting to give required notice or to make required reports. 20% of unpaid compensation for default in payment.
<b>Method of Insuring</b>	Through insurance carriers or approved employer self-financing.
<b>Financing</b>	Cost of insurance paid by employer.
<b>Funds</b>	Special Compensation Fund  <b>Income:</b> Fines and penalties. Death benefits where there are no dependents. Special assessments.  <b>Outgo:</b> To pay benefits to injured employee whose injury occurred prior to 1973 and where the employer or carrier has paid the maximum aggregate, for concurrent employment benefits and for preexisting condition benefits. To reimburse employees/employers effective January 1, 1992 and January 1 of every tenth year thereafter, for the cost of supplemental allowance for permanent total disability payments to employees injured before January 1, 1992 and January 1 of every tenth year thereafter. To injured employee or dependents where employer is in default in payment of compensation. For litigation expense incurred by or on behalf of the Special Compensation Fund.  <b>Solvency:</b> When cash balance falls below an amount determined by the Director to be insufficient to meet the fund's current and projected obligation, a levy based on a percentage of gross premiums and a special charge against self-insured until cash balance equals or exceeds an amount determined by the director to be sufficient to meet the fund's current and projected obligations.



## DEFINITIONS

<b>Attendant Services</b>	Cost of services of an attendant for a totally disabled employee.
<b>Average Cost Per Case</b>	Total compensation costs divided by the number of processed cases with cost.
<b>Compensation Orders</b>	Decisions made on controverted cases, on awarding of permanent partial disability and disfigurement, and on reopening cases.
<b>Costs</b>	All payments accorded to a claimant to include disability, death, disfigurement, vocational rehabilitation, attendant services, and medical payments.
<b>Days Lost</b>	Number of compensated (calendar) days in which injured workers were not able to work because of temporary total disability. This excludes the three-day waiting period.
<b>Disfigurement</b>	Scar, deformity, discoloration, or other disfiguring consequences resulting from the injury or caused by medical, surgical, and hospital treatment of the employee. This is separate from permanent partial disability.
<b>Employment</b>	That portion of the work force covered by Workers' Compensation law. Annual average taken from the "Employment and Payrolls in Hawaii" report excluding federal government employees.
<b>Event or Exposure</b>	Identifies the circumstance, which directly resulted in the injury or illness.
<b>Industry</b>	Identifies employers by the major type of activity in which they are engaged.
<b>Medical</b>	Physicians and hospital costs and costs for services and supplies.
<b>Nature of Injury or Illness</b>	Identifies the injury or illness in terms of its principal physical characteristic.
<b>Occupation</b>	Identifies the nature of work of the employee.
<b>Part of Body</b>	Identifies the part of the worker's body directly affected by the injury or illness.
<b>Permanent Partial Disability</b>	Injury or illness which results in the complete loss or loss of any member or part of the body or any permanent impairment of functions of the body or part thereof, regardless of any pre-existing disability.
<b>Permanent Total Disability</b>	Any injury or illness other than death, which permanently and totally incapacitates an employee from following any gainful occupation.
<b>Processed Cases</b>	Cases, which have been subject to screening procedures, the injury or illness medically evaluated, and all medical costs and workers' compensation payments totaled. Includes injuries and illnesses, which occurred in the report year or prior years.
<b>Reported Injuries and Illnesses (Reported Cases)</b>	All injuries and illnesses reported to the Disability Compensation Division. These reported injuries or illnesses may not have occurred during the report year.
<b>Reported Fatalities</b>	Any death resulting from an on-the-job injury or illness reported to the Disability Compensation Division.
<b>Source of Injury or Illness</b>	Identifies the object, substance, exposure, or bodily motion, which directly produced or inflicted the injury or illness.
<b>Temporary Partial Disability</b>	A work injury or illness which causes partial rather than total disability for temporary periods. The injured worker is paid a weekly benefit amount of 66-2/3 percent of the difference between his average weekly wages before the injury and his weekly earnings thereafter for the duration of the disability.
<b>Temporary Total Disability</b>	A common type of disability where the work injury or illness causes total disability for temporary periods. The employer or insurance carrier, for the duration of the disability, but not including the first three days, pays the injured worker a weekly benefit amount of 66-2/3 percent of his average weekly wages, but not more than the maximum weekly benefit amount nor less than the minimum weekly benefit amount, or if his average weekly wages are less than the minimum weekly benefit amount, at a rate of 100 percent of his average weekly wages.
<b>Vocational Rehabilitation</b>	Cost of vocational rehabilitation services.

## TECHNICAL NOTES

The Workers' Compensation Data Book is based on the annual accumulation of data in the State of Hawaii, Disability Compensation database.

1. The following coding systems and locally revised versions were used to categorize data:
  - a) Industrial attachment is determined by the principal activity of the employer as defined in the **North American Industry Classification System 2002 (NAICS)**. The new NAICS industry groupings better reflect the workings of the U.S. economy, particularly in the services sector. NAICS, developed using a production oriented conceptual framework, groups establishments into industries based on the activity in which they are primarily engaged. It is not an update of the Standard Industrial Classification (SIC) system. NAICS focuses on how products and services are created. More information on NAICS is available at the U.S. Census Bureau website at <http://www.census.gov/epcd/www/naics.html>.
  - b) Codes and definitions used to categorize Nature of Injury or Illness, Part of Body Affected, Source of Injury or Illness, and Event or Exposure were modeled after the **1992 Bureau of Labor Statistics (BLS) Occupational Injury and Illness Classification Structures (OIICS)**. Starting with 1996 data, BLS OIICS data codes were locally modified to 2 digits instead of 4 digits, making the data less detailed.
  - c) Occupational groups are based on the **1990 Alphabetical Index of Industries and Occupations**, developed and published by the Bureau of the Census, Washington, D.C., U.S. Government Printing Office. Starting with 1996 data, the occupation classifications were locally modified, making the data less detailed.
2. From 1999, the employment data source used in the **Worker's Compensation Data Book** has been changed. Instead of the **Labor Force Data Book** employment we are using the **Employment and Payrolls in Hawaii** statistics. Employment data from the later publication may be more in line with workers covered under the Workers' Compensation program. Caution should be taken when reviewing the employment and frequency data for trend analysis prior to 1999.
3. From 2000, the table Hearings and Decisions Issued (previously called Compensation Orders Issued and Number of Hearings) has changed to include Act 59 settlements and attorney fees. The combined category Permanent Partial & Disfigurement no longer exists. Figures are reported under the category with the highest severity. For example: a case with disability payments and disfigurement award would be counted in the disability category and not in disfigurement.
4. Beginning with the **2002 Workers' Compensation Data Book**, there is a new format for the Industry category. The North American Industry Classification System (NAICS) is being used to designate the different industries instead of the Standard Industrial Classification (SIC) system. For trend analysis purposes, the data may not be comparable.
5. Effective with the **2004 Workers' Compensation Data Book**, the close date to process a "reported case" for the preceding calendar year was changed from January 31 to December 31 to accommodate the filing of electronic "WC-1 Employers Report of Industrial Injury". For trend analysis purposes, the data for 2004 may not be comparable.