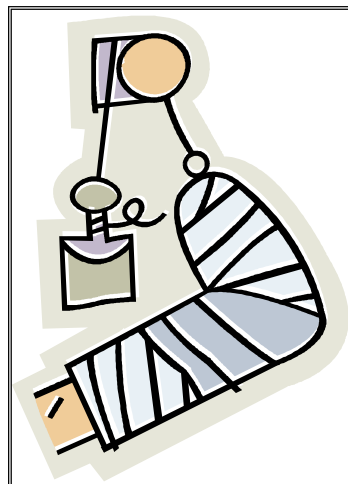
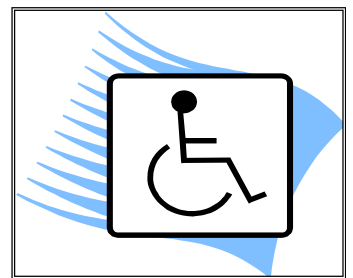
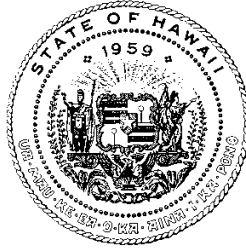


WORKERS' COMPENSATION DATA BOOK 2015



**STATE OF HAWAII
DEPARTMENT OF LABOR AND INDUSTRIAL RELATIONS
RESEARCH AND STATISTICS OFFICE**



State of Hawai'i
David Y. Ige, Governor

Department of Labor and Industrial Relations

Linda Chu Takayama, Director
Leonard Hoshijo, Deputy Director

Research and Statistics Office

Phyllis Dayao, Chief

Operations Management Information

Janet Kaya, Supervisor

Prepared by:

Elienne Yoshida
Siriporn Rolseth
Jarrett Ku

Disability Compensation Division

JoAnn Vidinhar, Administrator

WORKERS' COMPENSATION DATA BOOK 2015

INTRODUCTION

The WORKERS' COMPENSATION DATA BOOK presents a summary of information on injuries and illnesses reported to the Disability Compensation Division of the State of Hawai'i Department of Labor and Industrial Relations.

This publication includes work injury and illness case, cost and days lost information by island, industry, occupation, sex, part of body, average weekly wage, source of injury or illness, marital status, event or exposure, nature of injury or illness and age.

Publications from 2000 are available on the Internet at <http://labor.hawaii.gov/rs/>.



Please direct inquiries or comments to:

State of Hawai'i
Department of Labor & Industrial Relations
Research and Statistics Office
Operations Management Information Staff
830 Punchbowl St., Room 304
Honolulu, HI 96813

Data contained in this report – 586-9014
Copies of this report – 586-8999
E-mail: dlir.research@hawaii.gov

TABLE OF CONTENTS

| | |
|---|----|
| Highlights 2015..... | 3 |
| 2015 Hawai‘i Reported Injuries and Illnesses | 4 |
| Hawai‘i Reported Injuries and Illnesses: Reported Cases as a Percentage of Employment by Industry 2014 vs 2015 | 5 |
| 2015 Hawai‘i Processed Cases and Cost | 6 |
| 2015 Average Cost by Part of Body | 6 |
| 2015 Hawai‘i Type of Payments by Industry | 6 |
| Back Cases: Cost and Days Lost by Nature of Injury and Illness | 7 |
| 2015 Hawai‘i Workers’ Compensation Statistics | |
| Reported Cases: | |
| Part of Body Affected by Nature of Injury or Illness | 8 |
| Event or Exposure by Source of Injury or Illness | 8 |
| Reported & Processed Cases, Cost, Days Lost: | |
| State..... | 9 |
| O‘ahu..... | 12 |
| Maui County | 14 |
| Hawai‘i County | 16 |
| Kaua‘i County | 18 |
| 2015 Hawai‘i Reported Fatalities | 20 |
| 2015 Hearings and Decisions Issued | 21 |
| Maximum Weekly Wage Base and | |
| Maximum Weekly Benefit Amount History..... | 21 |
| 2015 Digest of the Workers' Compensation Law | 22 |
| Definitions | 23 |
| Technical Notes | 24 |

HIGHLIGHTS 2015

STATE OF HAWAI'I

REPORTED CASES: 20,805
PROCESSED CASES: 43,149
PROCESSED CASES WITH COST: 30,901
TOTAL COST: \$298,236,528
COST PER CASE: \$9,651
MEDICAL COST: \$125,643,073
DAYS LOST: 1,129,742
REPORTED FATALITIES: 27



Kaua'i County

Reported Cases: 1,367
Processed Cases: 2,614
Processed Cases with Cost: 1,796
Total Cost: \$13,116,442
Cost Per Case: \$7,303
Medical Cost: \$5,711,169
Days Lost: 54,869
Reported Fatality: 3



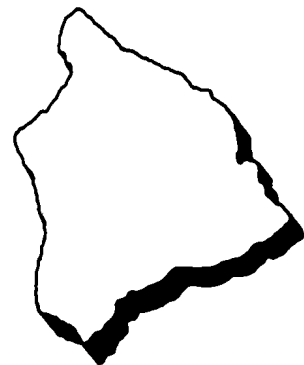
Maui County

Reported Cases: 2,979
Processed Cases: 6,014
Processed Cases with Cost: 4,316
Total Cost: \$38,656,589
Cost Per Case: \$8,957
Medical Cost: \$16,965,319
Days Lost: 132,648
Reported Fatality: 3



O'ahu

Reported Cases: 14,061
Processed Cases: 28,862
Processed Cases with Cost: 20,721
Total Cost: \$204,716,062
Cost Per Case: \$9,880
Medical Cost: \$85,919,530
Days Lost: 758,275
Reported Fatality: 16



Hawai'i County

Reported Cases: 2,398
Processed Cases: 5,659
Processed Cases with Cost: 4,068
Total Cost: \$41,747,435
Cost Per Case: \$10,262
Medical Cost: \$17,047,055
Days Lost: 183,950
Reported Fatality: 5

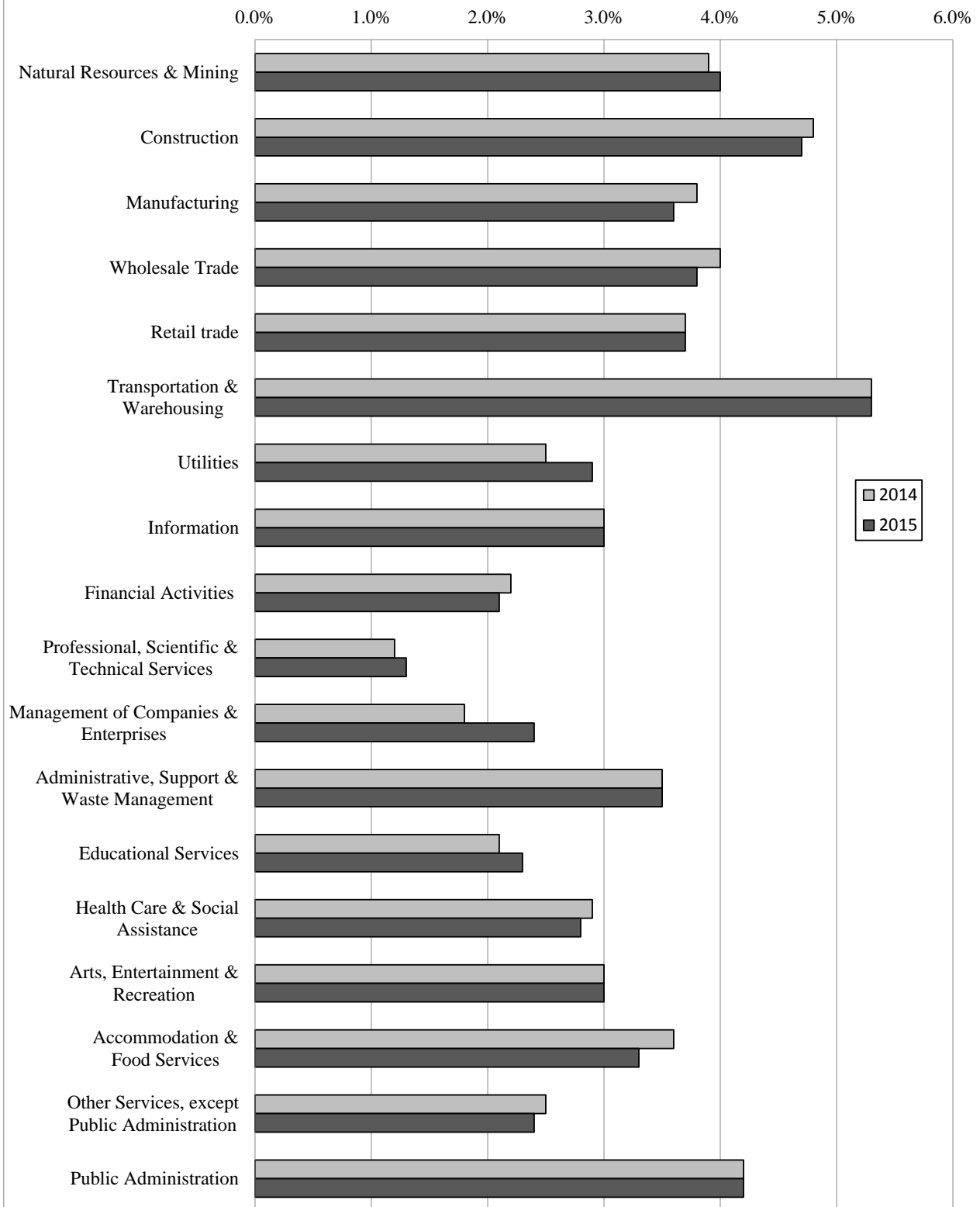
Note: Cost may not add due to rounding.

2015 HAWAI'I REPORTED INJURIES AND ILLNESSES

| Employment and Reported Cases by Industry for Hawai'i | | | | | | |
|--|-------------|----------------|-------------------------------------|-------------|----------------|-------------------------------------|
| INDUSTRY | 2014 | | | 2015 | | |
| | Employment | Reported Cases | Injury Case per Number of Employees | Employment | Reported Cases | Injury Case per Number of Employees |
| Total | 593,246 | 20,693 | 1 in 29 | 604,772 | 20,805 | 1 in 29 |
| Natural Resources & Mining | 6,562 | 255 | 1 in 26 | 6,686 | 270 | 1 in 25 |
| Construction | 31,789 | 1,511 | 1 in 21 | 34,671 | 1,618 | 1 in 21 |
| Manufacturing | 13,914 | 529 | 1 in 26 | 14,082 | 511 | 1 in 28 |
| Wholesale Trade | 17,710 | 714 | 1 in 25 | 18,005 | 686 | 1 in 26 |
| Retail Trade | 69,826 | 2,573 | 1 in 27 | 70,740 | 2,640 | 1 in 27 |
| Transportation & Warehousing | 26,331 | 1,392 | 1 in 19 | 27,076 | 1,431 | 1 in 19 |
| Utilities | 3,807 | 94 | 1 in 41 | 3,824 | 112 | 1 in 34 |
| Information | 8,450 | 251 | 1 in 34 | 8,682 | 262 | 1 in 33 |
| Financial Activities | 27,050 | 596 | 1 in 45 | 27,293 | 585 | 1 in 47 |
| Professional, Scientific & Technical Services | 24,376 | 298 | 1 in 82 | 24,542 | 313 | 1 in 78 |
| Management of Companies & Enterprises | 8,360 | 154 | 1 in 54 | 8,487 | 206 | 1 in 41 |
| Administrative, Support & Waste Management | 49,494 | 1,732 | 1 in 29 | 50,517 | 1,793 | 1 in 28 |
| Educational Services | 13,346 | 282 | 1 in 47 | 13,187 | 307 | 1 in 43 |
| Health Care & Social Assistance | 64,781 | 1,894 | 1 in 34 | 66,916 | 1,865 | 1 in 36 |
| Arts, Entertainment & Recreation | 12,020 | 363 | 1 in 33 | 11,726 | 348 | 1 in 34 |
| Accommodations & Food Services | 101,326 | 3,658 | 1 in 28 | 102,789 | 3,398 | 1 in 30 |
| Other Services, except Public Administration | 25,149 | 624 | 1 in 40 | 25,362 | 606 | 1 in 42 |
| Public Administration | 88,673 | 3,751 | 1 in 24 | 89,987 | 3,824 | 1 in 24 |
| Information Not Available/Unclassified | 282 | 22 | 1 in 13 | 200 | 30 | 1 in 7 |

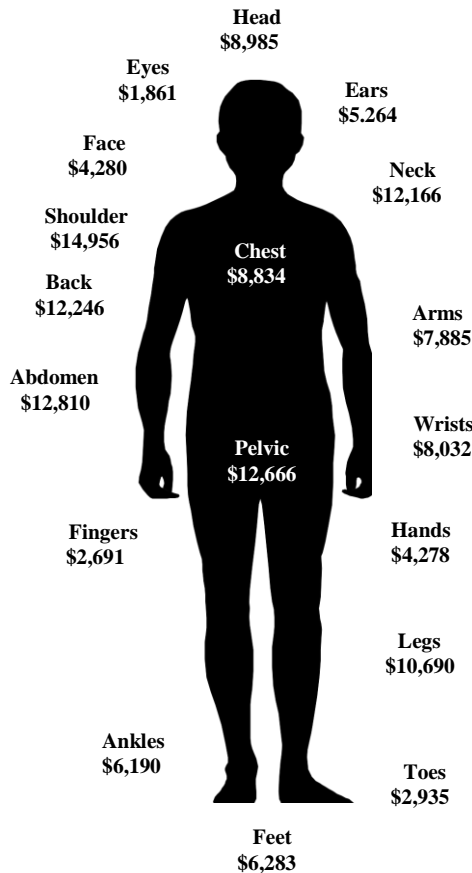
- In 2015, both employment and reported injury cases increased by 11,530 or 1.9 percent and 112 or 0.5 percent respectively.
- For the fifth consecutive year from 2010, employment levels trended up. All industries registered increases with the exception of Educational Services and Arts, Entertainment & Recreation in 2015 over the year.
- Construction recorded the largest employment gain rising by 2,882 or 9.1 percent followed by Health Care & Social Services increasing by 2,135 or 3.3 percent.
- Ten out of 18 industries accounted for the increases in both employment and reported cases. Arts, Entertainment & Recreation was the only industry which recorded a decrease in both employment and reported cases. Construction had the largest gain in reported cases increasing by 107 to 1,618.
- Management of Companies & Enterprises resulted in the largest percentage growth rising by 33.8 percent or 52 reported cases, followed second by Utilities by 19.1 percent or 18 reported cases.
- Accommodation & Food Services posted the largest decline in reported case dropping by 260 cases or -7.1 percent from 3,658. Employment for this industry reported an increase of 1,463 or 1.4 percent to 102,789.
- Transportation & Warehousing recorded the highest number of reported injuries per employment for the seventh consecutive year, registering one injury every nineteen workers in both 2014 and 2015.
- Professional, Scientific & Technical Services reported the lowest percent of reported injuries per employment in the last eleven years. The industry registered one injury for every seventy-eight workers in comparison to one injury for every eighty-two in 2014.

**Hawai'i Reported Injuries and Illnesses:
Reported Cases as a Percentage of Employment by Industry
2014 vs 2015**



2015 HAWAI'I PROCESSED CASES AND COST

2015 Average Cost by Part of Body



- In 2015, both Processed Cases and Processed Cases with Cost increased by 3,201 or 8.0 percent to 43,149 and by 2,815 or 10.0 percent to 30,901 respectively. Total Cost also reported increases growing to \$298,236,528 or 10.2 percent as did Days Lost, rising to 1,129,742 or 10.0 percent. The total Workers' Compensation Cost per Case rose from \$9,639 to \$9,651 or by 0.1 percent.
- Shoulder reported the highest Average Cost by Part of Body, registering an average cost of \$14,956 or 8.1 percent gain from 2014. Abdomen ranked second highest Average Cost by Part of Body at \$12,810 an increase of 93.8 percent due to several cases with high medical cost. Back followed at \$12,246 but exhibited a decrease by 4.1 percent from last year. Eyes posted the lowest Average Cost by Part of Body at \$1,861. Toes recorded the largest decrease in Average Cost by Part of Body, declining by 16.5 percent to \$2,935.
- Medical composed of \$125,643,073 or 42.1 percent of the total Workers' Compensation Costs. Medical Cost per Case rose by a modest \$20 to \$4,413 from 2014. Death accounted for the highest average cost at \$29,552, while Disfigurement had the lowest average cost at \$530.

2015 HAWAI'I TYPE OF

| | TOTAL WORKERS' COMPENSATION COSTS | TEMPORARY TOTAL DISABILITY | | TEMPORARY PARTIAL DISABILITY | | PERMANENT TOTAL DISABILITY | |
|---|-----------------------------------|----------------------------|---------------------|------------------------------|--------------------|----------------------------|---------------------|
| | | Cases | Cost | Cases | Cost | Cases | Cost |
| INDUSTRY | \$298,236,528 | 11,358 | \$82,801,117 | 1,290 | \$3,418,511 | 514 | \$14,107,853 |
| Natural Resources & Mining | \$4,074,814 | 145 | \$773,682,000 | 10 | \$21,729 | 16 | \$384,090 |
| Construction | \$32,096,226 | 821 | \$8,688,462 | 55 | \$168,729 | 49 | \$1,833,031 |
| Manufacturing | \$9,410,571 | 322 | \$2,400,934 | 26 | \$30,648 | 36 | \$930,211 |
| Wholesale Trade | \$10,966,503 | 397 | \$2,397,325 | 47 | \$100,230 | 5 | \$139,496 |
| Retail Trade | \$27,945,712 | 1253 | \$6,098,600 | 211 | \$521,897 | 34 | \$814,048 |
| Transportation & Warehousing | \$27,083,151 | 1,132 | \$8,382,735 | 166 | \$436,799 | 22 | \$669,077 |
| Utilities | \$1,503,165 | 46 | \$431,793 | 2 | \$10,008 | 5 | \$218,899 |
| Information | \$4,210,483 | 132 | \$983,057 | 6 | \$15,138 | 10 | \$252,069 |
| Financial Activities | \$8,175,060 | 294 | \$1,940,771 | 35 | \$91,242 | 9 | \$242,293 |
| Professional, Scientific, & Technical Svcs. | \$3,943,396 | 115 | \$922,915 | 15 | \$55,282 | 4 | \$104,584 |
| Management of Companies & Enterprises | \$2,614,136 | 85 | \$502,131 | 7 | \$16,660 | 12 | \$426,990 |
| Administrative, Support, & Waste Mgmt. | \$25,876,162 | 1,050 | \$6,741,226 | 96 | \$324,340 | 8 | \$465,682 |
| Educational Services | \$3,801,501 | 107 | \$681,878 | 14 | \$56,059 | 5 | \$159,325 |
| Health Care & Social Assistance | \$23,564,180 | 987 | \$7,052,493 | 159 | \$444,721 | 19 | \$562,635 |
| Arts, Entertainment, & Recreation | \$3,221,465 | 154 | \$522,613 | 12 | \$37,772 | 5 | \$111,319 |
| Accommodation and Food Services | \$32,673,436 | 1,816 | \$7,977,318 | 165 | \$380,450 | 29 | \$694,691 |
| Other Services, except Public Admin. | \$9,299,845 | 308 | \$1,870,022 | 26 | \$70,117 | 11 | \$284,544 |
| Public Administration | \$63,432,597 | 2,178 | \$24,287,753 | 233 | \$630,858 | 130 | \$2,966,474 |
| Other | \$4,344,125 | 16 | \$145,410 | 5 | \$5,832 | 105 | \$2,848,396 |

Notes: Cost is rounded to the nearest whole dollar and may not add to total.

| Back Cases: Cost and Days Lost by Nature of Injury and Illness | 2014 | | | | 2015 | | | |
|--|-----------------------|---------------|-----------------|--------------|-----------------------|---------------|-----------------|--------------|
| | Cases With Cost | Total Cost | Medical Cost | Days Lost | Cases With Cost | Total Cost | Medical Cost | Days Lost |
| Nature of Injury and Illness Total | 4,781 | \$61,074,810 | \$25,050,699 | 231,905 | 5,174 | \$63,359,467 | \$27,186,050 | 259,431 |
| Sprain, Strain | 2,642 | \$33,429,924 | \$13,422,191 | 126,358 | 2,979 | \$34,185,343 | \$15,362,518 | 145,309 |
| Back Pain | 1,486 | \$17,280,947 | \$7,444,297 | 72,588 | 1,478 | \$18,024,029 | \$7,439,214 | 77,711 |
| Traumatic Injury | 358 | \$5,682,734 | \$2,721,443 | 21,830 | 381 | \$5,800,275 | \$2,581,167 | 22,070 |
| Dislocation | 40 | \$729,730 | \$280,377 | 2,560 | 53 | \$745,258 | \$387,533 | 2,512 |
| Bruises, Contusions | 84 | \$763,020 | \$289,602 | 3,125 | 106 | \$1,132,689 | \$511,454 | 5,053 |
| Fracture | 41 | \$1,064,598 | \$435,042 | 2,849 | 52 | \$1,074,217 | \$406,252 | 3,412 |
| Multiple Traumatic Injuries/Disorders | 11 | \$84,002 | \$18,452 | 9 | 15 | \$174,434 | \$81,854 | 244 |
| Musculoskeletal System & Connective Tissue | 32 | \$275,414 | \$110,974 | 573 | 30 | \$423,960 | \$173,054 | 2,070 |
| Other Injuries and Illnesses | 21 | \$271,712 | \$147,045 | 1,196 | 20 | \$445,589 | \$77,875 | 1,050 |
| Non-classifiable | 66 | \$1,492,728 | \$181,276 | 817 | 60 | \$1,353,671 | \$165,129 | 0 |

Cost is rounded to the nearest whole dollar and may not add to total.

- Over the year, the total number of Back Cases with Costs increased from 4,781 cases to 5,174 cases in 2015 or by 8.2 percent.
- The total cost of Back Cases also grew to \$63,359,467 in 2015 from \$61,074,810 in 2014 or by 3.7 percent.
- The total average cost of all Back Injuries registered a minimal decrease of 4.1 percent from \$12,774 to \$12,246 in 2015.
- Sprain and Strain recorded largest number of Back Cases rising by 337 or 12.8 percent in 2015 from 2014.

PAYMENTS BY INDUSTRY

| PERMANENT PARTIAL DISABILITY | | DEATH | | DISFIGUREMENT | | VOCATIONAL REHABILITATION | | ATTENDANT SERVICES | | MEDICAL | | |
|------------------------------------|---------------------|-----------|--------------------|---------------|------------------|------------------------------|--------------------|-----------------------|-----------------|---------------|----------------------|------------------|
| Cases | Cost | Cases | Cost | Cases | Cost | Cases | Cost | Cases | Cost | Cases | Cost | Cost per Case |
| 2,938 | \$64,155,440 | 84 | \$2,482,367 | 1,821 | \$965,875 | 964 | \$4,564,281 | 10 | \$98,011 | 28,468 | \$125,643,073 | \$4,413 |
| 47 | \$1,069,806 | 3 | \$32,863 | 46 | \$35,499 | 12 | \$65,016 | 0 | \$0 | 396 | \$1,692,128 | \$4,273 |
| 279 | \$6,726,710 | 13 | \$651,610 | 212 | \$109,621 | 132 | \$625,889 | 2 | \$57,040 | 2,345 | \$13,235,137 | \$5,644 |
| 99 | \$1,938,439 | 0 | \$0 | 66 | \$35,775 | 32 | \$169,427 | 0 | \$0 | 795 | \$3,905,137 | \$4,912 |
| 108 | \$2,590,121 | 6 | \$180,425 | 70 | \$60,538 | 39 | \$225,654 | 0 | \$0 | 943 | \$5,272,715 | \$5,591 |
| 342 | \$6,770,607 | 2 | \$120,270 | 168 | \$94,959 | 108 | \$486,231 | 2 | \$10,600 | 3,140 | \$13,028,501 | \$4,149 |
| 251 | \$6,162,282 | 7 | \$184,762 | 141 | \$75,940 | 114 | \$498,059 | 0 | \$0 | 2,180 | \$10,673,496 | \$4,896 |
| 9 | \$105,294 | 0 | \$0 | 15 | \$7,705 | 2 | \$21,950 | 1 | \$19,776 | 179 | \$687,740 | \$3,842 |
| 47 | \$1,410,326 | 0 | \$0 | 27 | \$12,835 | 11 | \$33,711 | 0 | \$0 | 347 | \$1,503,347 | \$4,332 |
| 95 | \$2,138,382 | 4 | \$238,586 | 49 | \$26,953 | 28 | \$154,927 | 0 | \$0 | 761 | \$3,341,905 | \$4,391 |
| 34 | \$838,358 | 1 | \$27,665 | 24 | \$9,325 | 15 | \$24,917 | 0 | \$0 | 411 | \$1,960,350 | \$4,770 |
| 21 | \$403,477 | 2 | \$43,717 | 13 | \$9,050 | 9 | \$62,546 | 0 | \$0 | 197 | \$1,149,566 | \$5,835 |
| 277 | \$7,116,497 | 12 | \$238,487 | 147 | \$82,947 | 128 | \$588,272 | 1 | \$585 | 2,388 | \$10,318,125 | \$4,321 |
| 45 | \$907,546 | 3 | \$93,891 | 37 | \$21,977 | 10 | \$120,823 | 0 | \$0 | 397 | \$1,760,001 | \$4,433 |
| 216 | \$5,119,055 | 2 | \$12,217 | 82 | \$49,276 | 84 | \$443,733 | 2 | \$1,261 | 2,496 | \$9,878,788 | \$3,958 |
| 46 | \$987,987 | 1 | \$15,010 | 31 | \$11,437 | 7 | \$27,321 | 0 | \$0 | 421 | \$1,508,007 | \$3,582 |
| 356 | \$7,446,301 | 2 | \$21,247 | 267 | \$146,074 | 101 | \$444,604 | 1 | \$1,262 | 4,140 | \$15,561,491 | \$3,759 |
| 107 | \$2,456,355 | 1 | \$25,000 | 66 | \$36,815 | 37 | \$151,001 | 1 | \$7,488 | 846 | \$4,398,503 | \$5,199 |
| 549 | \$9,818,356 | 23 | \$585,138 | 356 | \$138,318 | 92 | \$401,687 | 0 | \$0 | 5,927 | \$24,604,013 | \$4,151 |
| 10 | \$149,540 | 2 | \$11,479 | 4 | \$830 | 3 | \$18,514 | 0 | \$0 | 159 | \$1,164,124 | \$7,322 |

2015 HAWAII WORKERS' COMPENSATION STATISTICS

PART OF BODY AFFECTED BY NATURE OF INJURY OR ILLNESS

| Reported Cases | Part of Body | Eyes | Head, Neck, Excl. Eyes | Trunk, Excl. Back | Back | Fingers | Upper Extremity, Excl. Fingers | Lower Extremity | Body System | Multiple Body Parts | Non-classifiable |
|------------------------------------|--------------|------|------------------------|-------------------|-------|---------|--------------------------------|-----------------|-------------|---------------------|------------------|
| Nature of Injury or Illness | 20,805 | 666 | 1,735 | 2,285 | 2,881 | 2,760 | 3,181 | 4,106 | 869 | 2,268 | 54 |
| Traumatic Injuries | 1,930 | 143 | 231 | 176 | 168 | 114 | 233 | 447 | 0 | 394 | 24 |
| Fracture | 632 | 0 | 70 | 76 | 25 | 130 | 119 | 200 | 0 | 12 | 0 |
| Sprains, Strains | 5,520 | 0 | 169 | 916 | 1,741 | 126 | 633 | 1,471 | 0 | 461 | 3 |
| Cut, Laceration | 2,566 | 26 | 377 | 12 | 3 | 1,338 | 570 | 220 | 0 | 19 | 1 |
| Puncture, Excluding Bites | 571 | 0 | 10 | 4 | 2 | 322 | 111 | 120 | 0 | 1 | 1 |
| Abrasions, Scratches | 349 | 57 | 45 | 5 | 3 | 11 | 111 | 76 | 0 | 40 | 1 |
| Bruises, Contusions | 2,033 | 33 | 320 | 227 | 74 | 214 | 288 | 626 | 0 | 251 | 0 |
| Foreign Bodies | 261 | 255 | 0 | 0 | 0 | 6 | 0 | 0 | 0 | 0 | 0 |
| Heat Burns | 424 | 10 | 28 | 17 | 2 | 24 | 250 | 51 | 0 | 42 | 0 |
| Multiple Injuries/Disorders | 598 | 2 | 50 | 20 | 8 | 46 | 64 | 114 | 0 | 293 | 1 |
| Back Pain | 804 | 0 | 0 | 0 | 804 | 0 | 0 | 0 | 0 | 0 | 0 |
| Pain, Excluding Back | 2,031 | 17 | 110 | 444 | 0 | 182 | 415 | 554 | 0 | 309 | 0 |
| Carpal Tunnel | 60 | 0 | 0 | 0 | 0 | 0 | 60 | 0 | 0 | 0 | 0 |
| Musculoskeletal | 112 | 0 | 1 | 19 | 17 | 15 | 41 | 13 | 0 | 6 | 0 |
| Skin Disorders | 124 | 0 | 12 | 5 | 0 | 8 | 54 | 18 | 0 | 27 | 0 |
| Symptoms | 242 | 12 | 31 | 26 | 0 | 0 | 0 | 0 | 154 | 19 | 0 |
| Mental Disorders | 347 | 0 | 0 | 0 | 0 | 0 | 0 | 0 | 347 | 0 | 0 |
| Exposure | 289 | 16 | 29 | 5 | 0 | 2 | 16 | 1 | 208 | 12 | 0 |
| Other Injuries/Illnesses | 1,891 | 95 | 252 | 332 | 34 | 222 | 216 | 195 | 160 | 382 | 3 |
| Nonclassifiable | 21 | 0 | 0 | 1 | 0 | 0 | 0 | 0 | 0 | 0 | 20 |

EVENT OR EXPOSURE BY SOURCE OF INJURY OR ILLNESS

| Reported Cases | Event or Exposure | Struck By or Struck Against | Caught In, Under, or Between | Rubbed or Abraded | Fall | Bodily Reaction | Overexertion | Contact With Temp. Extremes | Exposure (Harmful Substance) | Highway Motor Vehicle Accidents | Other |
|-------------------------------------|-------------------|-----------------------------|------------------------------|-------------------|-------|-----------------|--------------|-----------------------------|------------------------------|---------------------------------|-------|
| Source of Injury or Illness | 20,805 | 4,752 | 692 | 302 | 3,346 | 1,809 | 4,859 | 470 | 1,347 | 439 | 2,789 |
| Chemical, Chemical Product | 425 | 3 | 0 | 0 | 0 | 0 | 0 | 18 | 400 | 0 | 4 |
| Containers | 2,827 | 624 | 69 | 4 | 64 | 0 | 1,907 | 40 | 0 | 0 | 119 |
| Furniture, Fixtures | 1,181 | 503 | 56 | 2 | 152 | 0 | 432 | 5 | 4 | 0 | 27 |
| Machinery | 1,200 | 476 | 130 | 0 | 46 | 0 | 353 | 70 | 6 | 2 | 117 |
| Building Materials | 558 | 263 | 38 | 10 | 19 | 0 | 196 | 2 | 1 | 0 | 29 |
| Vehicle, Mobile Eqmt Parts | 140 | 38 | 10 | 0 | 4 | 0 | 80 | 0 | 0 | 0 | 8 |
| Other Parts and Materials | 582 | 359 | 21 | 4 | 14 | 0 | 130 | 9 | 1 | 0 | 44 |
| Plants, Animals, Minerals | 1,090 | 173 | 16 | 4 | 33 | 0 | 83 | 156 | 308 | 0 | 317 |
| Person, Injured Worker | 2,544 | 9 | 0 | 2 | 2 | 1,809 | 21 | 0 | 236 | 0 | 465 |
| Person, Other | 1,493 | 96 | 11 | 1 | 6 | 0 | 432 | 0 | 45 | 0 | 902 |
| Floors, Walkways, Ground | 2,840 | 51 | 10 | 9 | 2,758 | 0 | 12 | 0 | 0 | 0 | 0 |
| Structures, Other Surfaces | 786 | 388 | 135 | 2 | 126 | 0 | 90 | 2 | 1 | 0 | 42 |
| Handtools (Nonpowered) | 1,082 | 807 | 25 | 0 | 8 | 0 | 180 | 0 | 1 | 0 | 61 |
| Handtools (Powered) | 309 | 131 | 10 | 0 | 6 | 0 | 137 | 5 | 3 | 0 | 17 |
| Other Tools, Instruments, Equipment | 909 | 249 | 25 | 2 | 32 | 0 | 327 | 3 | 250 | 0 | 21 |
| Highway Vehicle, Motorized | 956 | 166 | 68 | 1 | 34 | 0 | 94 | 8 | 0 | 430 | 155 |
| Nonpowered Plant, Vehicles | 408 | 149 | 41 | 0 | 19 | 0 | 187 | 0 | 0 | 0 | 12 |
| Other Vehicles | 333 | 68 | 16 | 0 | 15 | 0 | 55 | 0 | 0 | 7 | 172 |
| Scrap, Waste, Debris | 532 | 148 | 0 | 257 | 0 | 0 | 20 | 1 | 37 | 0 | 69 |
| Other Sources | 610 | 51 | 11 | 4 | 8 | 0 | 123 | 151 | 54 | 0 | 208 |

2015 HAWAI'I WORKERS' COMPENSATION STATISTICS

| STATE | REPORTED | | PROCESSED | | WITH COST | | COST | | DAYS LOST | |
|--------------------------------------|----------|--------|-----------|--------|-----------|--------|---------------|--------|-----------|--------|
| ISLAND | 20,805 | 100.0% | 43,149 | 100.0% | 30,901 | 100.0% | 298,236,528 | 100.0% | 1,129,742 | 100.0% |
| O'ahu | 14,061 | 67.6 | 28,862 | 66.9 | 20,721 | 67.1 | 204,716,062 | 68.6 | 758,275 | 67.1 |
| East Hawai'i | 1,028 | 4.9 | 2,783 | 6.5 | 1,981 | 6.4 | 20,743,821 | 7.0 | 106,688 | 9.4 |
| West Hawai'i | 1,370 | 6.6 | 2,876 | 6.7 | 2,087 | 6.8 | 21,003,614 | 7.0 | 77,262 | 6.8 |
| Maui | 2,816 | 13.5 | 5,679 | 13.2 | 4,080 | 13.2 | 35,527,485 | 11.9 | 125,178 | 11.1 |
| Moloka'i | 65 | 0.3 | 140 | 0.3 | 83 | 0.3 | 844,884 | 0.3 | 2,601 | 0.2 |
| Lana'i | 98 | 0.5 | 195 | 0.5 | 153 | 0.5 | 2,284,220 | 0.8 | 4,869 | 0.4 |
| Kaua'i | 1,367 | 6.6 | 2,614 | 6.1 | 1,796 | 5.8 | 13,116,442 | 4.4 | 54,869 | 4.9 |
| INDUSTRY | 20,805 | 100.0% | 43,149 | 100.0% | 30,901 | 100.0% | \$298,236,528 | 100.0% | 1,129,742 | 100.0% |
| Natural Resources & Mining | 270 | 1.3 | 574 | 1.3 | 435 | 1.4 | 4,074,814 | 1.4 | 14,150 | 1.3 |
| Construction | 1,618 | 7.8 | 3,138 | 7.3 | 2,509 | 8.1 | 32,096,226 | 10.8 | 96,005 | 8.5 |
| Manufacturing | 511 | 2.5 | 1,084 | 2.5 | 880 | 2.9 | 9,410,571 | 3.2 | 29,241 | 2.6 |
| Wholesale Trade | 686 | 3.3 | 1,283 | 3.0 | 1,013 | 3.3 | 10,966,503 | 3.7 | 34,607 | 3.1 |
| Retail Trade | 2,640 | 12.7 | 5,013 | 11.6 | 3,378 | 10.9 | 27,945,712 | 9.4 | 115,369 | 10.2 |
| Transportation & Warehousing | 1,431 | 6.9 | 2,937 | 6.8 | 2,380 | 7.7 | 27,083,151 | 9.1 | 108,868 | 9.6 |
| Utilities | 112 | 0.5 | 297 | 0.7 | 193 | 0.6 | 1,503,165 | 0.5 | 4,505 | 0.4 |
| Information | 262 | 1.3 | 538 | 1.3 | 380 | 1.2 | 4,210,483 | 1.4 | 10,070 | 0.9 |
| Financial Activities | 585 | 2.8 | 1,140 | 2.6 | 830 | 2.7 | 8,175,060 | 2.7 | 28,033 | 2.5 |
| Professional, Scientific, & Tech. | 313 | 1.5 | 558 | 1.3 | 431 | 1.4 | 3,943,396 | 1.3 | 12,326 | 1.1 |
| Management of Companies & Entrpr. | 206 | 1.0 | 344 | 0.8 | 217 | 0.7 | 2,614,136 | 0.9 | 7,379 | 0.7 |
| Administrative, Support, & Waste | 1,793 | 8.6 | 3,299 | 7.7 | 2,553 | 8.3 | 25,876,162 | 8.7 | 116,196 | 10.3 |
| Educational Services | 307 | 1.5 | 582 | 1.4 | 430 | 1.4 | 3,801,502 | 1.3 | 10,840 | 1.0 |
| Health Care & Social Assistance | 1,865 | 9.0 | 3,586 | 8.3 | 2,652 | 8.6 | 23,564,180 | 7.9 | 103,531 | 9.2 |
| Arts, Entertainment, & Recreation | 348 | 1.7 | 632 | 1.5 | 462 | 1.5 | 3,221,465 | 1.1 | 9,798 | 0.9 |
| Accommodation and Food Services | 3,398 | 16.3 | 6,052 | 14.0 | 4,475 | 14.5 | 32,673,436 | 11.0 | 136,905 | 12.1 |
| Other Services, except Public Admin. | 606 | 2.9 | 1,199 | 2.8 | 919 | 3.0 | 9,299,845 | 3.1 | 33,775 | 3.0 |
| Public Administration | 3,824 | 18.4 | 10,601 | 24.6 | 6,523 | 21.1 | 63,432,596 | 21.3 | 255,496 | 22.6 |
| Other | 30 | 0.1 | 292 | 0.7 | 241 | 0.8 | 4,344,125 | 1.5 | 2,648 | 0.2 |
| TYPE OF INSURANCE | 20,805 | 100.0% | 43,149 | 100.0% | 30,901 | 100.0% | \$298,236,528 | 100.0% | 1,129,742 | 100.0% |
| Carrier | 13,943 | 67.0 | 26,315 | 61.0 | 19,556 | 63.3 | 180,151,479 | 60.4 | 688,024 | 60.9 |
| Self-Insured: Private & Captive | 3,112 | 15.0 | 6,382 | 14.8 | 4,957 | 16.0 | 43,921,037 | 14.7 | 187,964 | 16.6 |
| Self-Insured: Government | 3,750 | 18.0 | 10,452 | 24.2 | 6,388 | 20.7 | 60,745,035 | 20.4 | 253,754 | 22.5 |
| State of Hawai'i | 1,837 | 8.8 | 6,043 | 14.0 | 3,575 | 11.6 | 31,136,579 | 10.4 | 156,022 | 13.8 |
| City & County of Honolulu | 1,509 | 7.3 | 3,241 | 7.5 | 2,025 | 6.6 | 22,300,867 | 7.5 | 71,021 | 6.3 |
| Hawai'i County | 135 | 0.7 | 506 | 1.2 | 285 | 0.9 | 1,806,085 | 0.6 | 7,870 | 0.7 |
| Maui County | 153 | 0.7 | 411 | 1.0 | 299 | 1.0 | 3,914,998 | 1.3 | 10,748 | 1.0 |
| Kaua'i County | 116 | 0.6 | 251 | 0.6 | 204 | 0.7 | 1,586,506 | 0.5 | 8,093 | 0.7 |
| Special Compensation Fund | INA | -- | INA | -- | INA | -- | 13,418,977 | 4.5 | INA | -- |
| OCCUPATION | 20,805 | 100.0% | 43,149 | 100.0% | 30,901 | 100.0% | \$298,236,528 | 100.0% | 1,129,742 | 100.0% |
| Executive, Admin. & Managerial | 642 | 3.1 | 1,510 | 3.5 | 1,062 | 3.4 | 11,995,645 | 4.0 | 27,290 | 2.4 |
| Professional Specialty | 1,549 | 7.5 | 3,670 | 8.5 | 2,375 | 7.7 | 20,649,846 | 6.9 | 68,609 | 6.1 |
| Technical Support | 477 | 2.3 | 1,001 | 2.3 | 662 | 2.1 | 6,091,549 | 2.0 | 23,294 | 2.1 |
| Sales | 1,431 | 6.9 | 2,755 | 6.4 | 1,792 | 5.8 | 17,167,871 | 5.8 | 67,991 | 6.0 |
| Administrative Support | 1,199 | 5.8 | 2,840 | 6.6 | 1,874 | 6.1 | 15,717,595 | 5.3 | 67,029 | 5.9 |
| Services | 6,982 | 33.6 | 13,956 | 32.3 | 9,711 | 31.4 | 80,993,774 | 27.2 | 349,750 | 31.0 |
| Agricultural, Forestry & Fishing | 1,097 | 5.3 | 2,155 | 5.0 | 1,605 | 5.2 | 13,089,404 | 4.4 | 58,559 | 5.2 |
| Mechanic, Repairer | 1,392 | 6.7 | 2,850 | 6.6 | 2,188 | 7.1 | 21,840,319 | 7.3 | 71,245 | 6.3 |
| Construction Trades | 1,281 | 6.2 | 2,600 | 6.0 | 2,027 | 6.6 | 27,357,003 | 9.2 | 80,455 | 7.1 |
| Precision Production | 330 | 1.6 | 693 | 1.6 | 530 | 1.7 | 4,845,718 | 1.6 | 16,956 | 1.5 |
| Operator, Fabricator, Inspector | 285 | 1.4 | 552 | 1.3 | 438 | 1.4 | 3,459,902 | 1.2 | 9,542 | 0.8 |
| Transportation, Material Moving | 1,397 | 6.7 | 3,124 | 7.2 | 2,495 | 8.1 | 32,445,980 | 10.9 | 130,779 | 11.6 |
| Handler, Helper, Laborer | 2,613 | 12.6 | 4,985 | 11.6 | 3,812 | 12.3 | 37,622,699 | 12.6 | 152,681 | 13.5 |
| Nonclassifiable | 130 | 0.6 | 458 | 1.1 | 330 | 1.1 | 4,959,223 | 1.7 | 5,562 | 0.5 |
| SEX | 20,805 | 100.0% | 43,149 | 100.0% | 30,901 | 100.0% | \$298,236,528 | 100.0% | 1,129,742 | 100.0% |
| Male | 12,453 | 59.9 | 25,335 | 58.7 | 18,522 | 59.9 | 189,661,759 | 63.6 | 664,574 | 58.8 |
| Female | 8,352 | 40.1 | 17,814 | 41.3 | 12,379 | 40.1 | 108,574,769 | 36.4 | 465,168 | 41.2 |

Note: Cost and percent totals may not add due to rounding.

2015 HAWAII WORKERS' COMPENSATION STATISTICS

| STATE | REPORTED | | PROCESSED | | WITH COST | | COST | | DAYS LOST | |
|-------------------------------------|---------------|---------------|---------------|---------------|---------------|---------------|----------------------|---------------|------------------|---------------|
| PART OF BODY | 20,805 | 100.0% | 43,149 | 100.0% | 30,901 | 100.0% | \$298,236,528 | 100.0% | 1,129,742 | 100.0% |
| Ears | 80 | 0.4 | 174 | 0.4 | 91 | 0.3 | 479,058 | 0.2 | 975 | 0.1 |
| Face, Excluding Eyes, Ears | 679 | 3.3 | 1,176 | 2.7 | 768 | 2.5 | 3,286,756 | 1.1 | 10,253 | 0.9 |
| Eyes | 666 | 3.2 | 1,033 | 2.4 | 686 | 2.2 | 1,276,335 | 0.4 | 3,529 | 0.3 |
| Head, Excluding Ears, Face, Eyes | 709 | 3.4 | 1,329 | 3.1 | 900 | 2.9 | 8,086,932 | 2.7 | 29,333 | 2.6 |
| Neck | 267 | 1.3 | 590 | 1.4 | 440 | 1.4 | 5,352,890 | 1.8 | 15,435 | 1.4 |
| Trunk, Excluding Back | 2,285 | 11.0 | 5,000 | 11.6 | 3,692 | 12.0 | 50,337,996 | 16.9 | 178,668 | 15.8 |
| <i>Shoulder</i> | 1,158 | 5.6 | 2,681 | 6.2 | 2,086 | 6.8 | 31,197,239 | 10.5 | 114,713 | 10.2 |
| <i>Chest</i> | 395 | 1.9 | 763 | 1.8 | 474 | 1.5 | 4,187,121 | 1.4 | 10,530 | 0.9 |
| <i>Abdomen</i> | 142 | 0.7 | 249 | 0.6 | 157 | 0.5 | 2,011,182 | 0.7 | 3,875 | 0.3 |
| <i>Pelvic Region</i> | 257 | 1.2 | 536 | 1.2 | 380 | 1.2 | 4,813,132 | 1.6 | 16,052 | 1.4 |
| <i>Trunk, Multiple/Unspecified</i> | 333 | 1.6 | 771 | 1.8 | 595 | 1.9 | 8,129,322 | 2.7 | 33,498 | 3.0 |
| Back (Spine/Spinal Cord) | 2,881 | 13.9 | 6,732 | 15.6 | 5,174 | 16.7 | 63,359,467 | 21.2 | 259,431 | 23.0 |
| Arms | 1,132 | 5.4 | 2,221 | 5.2 | 1,589 | 5.1 | 12,529,103 | 4.2 | 49,907 | 4.4 |
| Wrists | 650 | 3.1 | 1,379 | 3.2 | 970 | 3.1 | 7,791,035 | 2.6 | 33,170 | 2.9 |
| Hands, Excluding Fingers | 1,010 | 4.9 | 1,685 | 3.9 | 1,178 | 3.8 | 5,039,886 | 1.7 | 16,976 | 1.5 |
| Fingers | 2,760 | 13.3 | 4,554 | 10.6 | 3,281 | 10.6 | 8,829,455 | 3.0 | 26,855 | 2.4 |
| Upper Extremities, Multiple | 389 | 1.9 | 794 | 1.8 | 546 | 1.8 | 4,123,955 | 1.4 | 18,553 | 1.6 |
| Legs | 2,160 | 10.4 | 4,931 | 11.4 | 3,626 | 11.7 | 38,762,216 | 13.0 | 157,779 | 14.0 |
| Ankles | 797 | 3.8 | 1,528 | 3.5 | 1,144 | 3.7 | 7,081,808 | 2.4 | 31,435 | 2.8 |
| Feet, Excl. Toes | 634 | 3.1 | 1,139 | 2.6 | 802 | 2.6 | 5,039,120 | 1.7 | 19,127 | 1.7 |
| Toes | 263 | 1.3 | 442 | 1.0 | 311 | 1.0 | 912,796 | 0.3 | 4,286 | 0.4 |
| Lower Extremities, Multiple | 252 | 1.2 | 510 | 1.2 | 371 | 1.2 | 3,391,240 | 1.1 | 12,891 | 1.1 |
| Body Systems | 869 | 4.2 | 1,784 | 4.1 | 709 | 2.3 | 7,578,434 | 2.5 | 29,585 | 2.6 |
| Multiple Body Parts | 2,268 | 10.9 | 5,938 | 13.8 | 4,479 | 14.5 | 61,647,845 | 20.7 | 225,974 | 20.0 |
| Nonclassifiable | 54 | 0.3 | 210 | 0.5 | 144 | 0.5 | 3,330,201 | 1.1 | 5,580 | 0.5 |
| AVERAGE WEEKLY WAGE | 20,805 | 100.0% | 43,149 | 100.0% | 30,901 | 100.0% | \$298,236,528 | 100.0% | 1,129,742 | 100.0% |
| \$01-\$200 | 933 | 4.5 | 1,862 | 4.3 | 1,283 | 4.2 | 9,727,979 | 3.3 | 40,065 | 3.6 |
| \$200.01-\$400 | 1,974 | 9.5 | 4,242 | 9.8 | 3,174 | 10.3 | 29,298,001 | 9.8 | 122,268 | 10.8 |
| \$400.01-\$600 | 2,804 | 13.5 | 5,745 | 13.3 | 4,252 | 13.8 | 37,644,906 | 12.6 | 158,820 | 14.1 |
| \$600.01-\$800 | 3,145 | 15.1 | 6,924 | 16.1 | 5,020 | 16.3 | 51,823,442 | 17.4 | 221,930 | 19.6 |
| \$800.01-\$1000 | 2,170 | 10.4 | 4,661 | 10.8 | 3,345 | 10.8 | 36,953,774 | 12.4 | 145,705 | 12.9 |
| Over \$1000 | 3,942 | 19.0 | 8,049 | 18.7 | 5,651 | 18.3 | 61,887,557 | 20.8 | 188,397 | 16.7 |
| Information Not Available | 5,837 | 28.1 | 11,666 | 27.0 | 8,176 | 26.5 | 70,900,869 | 23.8 | 252,557 | 22.4 |
| SOURCE OF INJURY OR ILLNESS | 20,805 | 100.0% | 43,149 | 100.0% | 30,901 | 100.0% | \$298,236,528 | 100.0% | 1,129,742 | 100.0% |
| Chemical, Chemical Product | 425 | 2.0 | 697 | 1.6 | 431 | 1.4 | 1,565,445 | 0.5 | 4,273 | 0.4 |
| Containers | 2,827 | 13.6 | 5,757 | 13.3 | 4,311 | 14.0 | 40,778,909 | 13.7 | 177,252 | 15.7 |
| Furniture, Fixtures | 1,181 | 5.7 | 2,336 | 5.4 | 1,670 | 5.4 | 12,675,177 | 4.3 | 52,975 | 4.7 |
| Machinery | 1,200 | 5.8 | 2,317 | 5.4 | 1,737 | 5.6 | 18,069,586 | 6.1 | 56,263 | 5.0 |
| Building Materials | 558 | 2.7 | 1,060 | 2.5 | 802 | 2.6 | 9,127,184 | 3.1 | 32,951 | 2.9 |
| Vehicle, Mobile Equipment Parts | 140 | 0.7 | 340 | 0.8 | 278 | 0.9 | 2,951,617 | 1.0 | 9,606 | 0.9 |
| Other Parts and Materials | 582 | 2.8 | 1,067 | 2.5 | 813 | 2.6 | 6,318,815 | 2.1 | 15,274 | 1.4 |
| Plants, Animals, Minerals | 1,090 | 5.2 | 1,768 | 4.1 | 1,134 | 3.7 | 4,766,413 | 1.6 | 16,744 | 1.5 |
| Person, Injured Worker | 2,544 | 12.2 | 5,910 | 13.7 | 3,926 | 12.7 | 43,683,468 | 14.7 | 180,320 | 16.0 |
| Person, Other than Injured Worker | 1,493 | 7.2 | 3,161 | 7.3 | 2,120 | 6.9 | 19,337,262 | 6.5 | 87,811 | 7.8 |
| Floors, Walkways, Ground | 2,840 | 13.7 | 6,748 | 15.6 | 5,055 | 16.4 | 60,764,326 | 20.4 | 228,427 | 20.2 |
| Structures, Other Surfaces | 786 | 3.8 | 1,457 | 3.4 | 1,002 | 3.2 | 7,555,089 | 2.5 | 31,120 | 2.8 |
| Handtools (Nonpowered) | 1,082 | 5.2 | 1,852 | 4.3 | 1,328 | 4.3 | 5,904,384 | 2.0 | 22,499 | 2.0 |
| Handtools (Powered) | 309 | 1.5 | 587 | 1.4 | 464 | 1.5 | 3,392,387 | 1.1 | 14,943 | 1.3 |
| Other Tools, Instruments, Equipment | 909 | 4.4 | 1,799 | 4.2 | 1,277 | 4.1 | 9,239,423 | 3.1 | 39,835 | 3.5 |
| Highway Vehicle, Motorized | 956 | 4.6 | 2,337 | 5.4 | 1,818 | 5.9 | 24,629,468 | 8.3 | 77,507 | 6.9 |
| Nonpowered Plant Vehicles | 408 | 2.0 | 774 | 1.8 | 600 | 1.9 | 5,396,732 | 1.8 | 24,946 | 2.2 |
| Other Vehicles | 333 | 1.6 | 711 | 1.7 | 557 | 1.8 | 7,622,306 | 2.6 | 22,928 | 2.0 |
| Scrap, Waste, Debris | 532 | 2.6 | 795 | 1.8 | 517 | 1.7 | 1,631,712 | 0.6 | 4,536 | 0.4 |
| Other Sources | 610 | 2.9 | 1,676 | 3.9 | 1,061 | 3.4 | 12,826,825 | 4.3 | 29,532 | 2.6 |
| MARITAL STATUS | 20,805 | 100.0% | 43,149 | 100.0% | 30,901 | 100.0% | \$298,236,528 | 100.0% | 1,129,742 | 100.0% |
| Married | 9,490 | 45.6 | 20,860 | 48.3 | 15,083 | 48.8 | 159,780,809 | 53.6 | 575,333 | 50.9 |
| Single | 10,535 | 50.6 | 20,888 | 48.4 | 14,833 | 48.0 | 131,449,550 | 44.1 | 528,483 | 46.8 |
| Information Not Available | 780 | 3.8 | 1,401 | 3.3 | 985 | 3.2 | 7,006,169 | 2.4 | 25,926 | 2.3 |

Note: Cost and percent totals may not add due to rounding.

2015 HAWAII WORKERS' COMPENSATION STATISTICS

| STATE | REPORTED | | PROCESSED | | WITH COST | | COST | | DAYS LOST | |
|--------------------------------------|----------|--------|-----------|--------|-----------|--------|---------------|--------|-----------|--------|
| EVENT OR EXPOSURE | 20,805 | 100.0% | 43,149 | 100.0% | 30,901 | 100.0% | \$298,236,528 | 100.0% | 1,129,742 | 100.0% |
| Struck Against | 1,764 | 8.5 | 2,880 | 6.7 | 1,973 | 6.4 | 8,467,182 | 2.8 | 32,695 | 2.9 |
| Struck By | 2,988 | 14.4 | 5,229 | 12.1 | 3,853 | 12.5 | 21,686,105 | 7.3 | 73,057 | 6.5 |
| Caught In, Under, or Between | 692 | 3.3 | 1,232 | 2.9 | 914 | 3.0 | 4,543,184 | 1.5 | 14,865 | 1.3 |
| Rubbed or Abraded | 302 | 1.5 | 432 | 1.0 | 294 | 1.0 | 515,859 | 0.2 | 1,338 | 0.1 |
| Other Contact with Object, Equipment | 458 | 2.2 | 731 | 1.7 | 497 | 1.6 | 1,340,682 | 0.5 | 5,237 | 0.5 |
| Falls (From Elevation) | 936 | 4.5 | 2,306 | 5.3 | 1,805 | 5.8 | 25,730,139 | 8.6 | 88,257 | 7.8 |
| Falls (To Same Level) | 2,332 | 11.2 | 5,318 | 12.3 | 3,930 | 12.7 | 41,310,316 | 13.9 | 163,585 | 14.5 |
| Falls (Other) | 78 | 0.4 | 228 | 0.5 | 173 | 0.6 | 2,900,338 | 1.0 | 8,558 | 0.8 |
| Bodily Reaction | 1,809 | 8.7 | 3,975 | 9.2 | 2,948 | 9.5 | 30,835,507 | 10.3 | 126,643 | 11.2 |
| Overexertion | 4,859 | 23.4 | 10,894 | 25.3 | 8,307 | 26.9 | 98,454,694 | 33.0 | 412,183 | 36.5 |
| Repetitive Motion | 346 | 1.7 | 960 | 2.2 | 600 | 1.9 | 6,614,126 | 2.2 | 32,608 | 2.9 |
| Heart Attacks and Strokes | 32 | 0.2 | 82 | 0.2 | 22 | 0.1 | 848,222 | 0.3 | 1,598 | 0.1 |
| Contact (Electrical) | 33 | 0.2 | 85 | 0.2 | 56 | 0.2 | 622,940 | 0.2 | 1,993 | 0.2 |
| Contact (Temperature Extremes) | 470 | 2.3 | 768 | 1.8 | 519 | 1.7 | 1,364,008 | 0.5 | 4,645 | 0.4 |
| Exposure (Noise) | 22 | 0.1 | 78 | 0.2 | 29 | 0.1 | 138,356 | 0.1 | 349 | 0.0 |
| Exposure (Harmful Substance) | 1,347 | 6.5 | 2,468 | 5.7 | 1,297 | 4.2 | 5,960,010 | 2.0 | 22,822 | 2.0 |
| Accidents (Highway Vehicle) | 439 | 2.1 | 1,209 | 2.8 | 962 | 3.1 | 13,419,820 | 4.5 | 42,328 | 3.8 |
| Accidents (Non-Highway Vehicle) | 157 | 0.8 | 352 | 0.8 | 275 | 0.9 | 4,222,090 | 1.4 | 12,929 | 1.1 |
| Accidents (Other Transportation) | 210 | 1.0 | 483 | 1.1 | 376 | 1.2 | 7,479,541 | 2.5 | 19,109 | 1.7 |
| Explosions | 30 | 0.1 | 63 | 0.2 | 52 | 0.2 | 986,526 | 0.3 | 1,776 | 0.2 |
| Assaults, Violent Acts | 1,123 | 5.4 | 2,291 | 5.3 | 1,447 | 4.7 | 11,486,327 | 3.9 | 46,914 | 4.2 |
| Other Events/Exposures | 184 | 0.9 | 327 | 0.8 | 132 | 0.4 | 1,677,603 | 0.6 | 2,104 | 0.2 |
| Nonclassifiable | 194 | 0.9 | 758 | 1.8 | 440 | 1.4 | 7,632,953 | 2.6 | 14,149 | 1.3 |
| NATURE OF INJURY OR ILLNESS | 20,805 | 100.0% | 43,149 | 100.0% | 30,901 | 100.0% | \$298,236,528 | 100.0% | 1,129,742 | 100.0% |
| Traumatic Injuries | 1,930 | 9.3 | 4,502 | 10.4 | 3,265 | 10.6 | 37,167,375 | 12.5 | 145,924 | 12.9 |
| Fracture | 632 | 3.0 | 1,708 | 4.0 | 1,374 | 4.5 | 19,299,147 | 6.5 | 62,431 | 5.5 |
| Sprains, Strains | 5,520 | 26.5 | 12,086 | 28.0 | 9,237 | 29.9 | 101,536,836 | 34.1 | 425,140 | 37.6 |
| Cut, Laceration | 2,566 | 12.3 | 4,136 | 9.6 | 3,005 | 9.7 | 8,846,869 | 3.0 | 24,823 | 2.2 |
| Puncture, Excluding Bites | 571 | 2.7 | 887 | 2.1 | 599 | 1.9 | 1,019,908 | 0.3 | 3,274 | 0.3 |
| Abrasions, Scratches | 349 | 1.7 | 609 | 1.4 | 403 | 1.3 | 2,153,710 | 0.7 | 8,987 | 0.8 |
| Bruises, Contusions | 2,033 | 9.8 | 3,517 | 8.2 | 2,483 | 8.0 | 16,058,808 | 5.4 | 55,738 | 4.9 |
| Foreign Bodies | 261 | 1.3 | 369 | 0.9 | 253 | 0.8 | 299,072 | 0.1 | 670 | 0.1 |
| Heat Burns | 424 | 2.0 | 712 | 1.7 | 494 | 1.6 | 1,955,931 | 0.7 | 5,777 | 0.5 |
| Multiple Injuries/Disorders | 598 | 2.9 | 1,379 | 3.2 | 1,032 | 3.3 | 11,236,013 | 3.8 | 33,797 | 3.0 |
| Back Pain | 804 | 3.9 | 1,972 | 4.6 | 1,478 | 4.8 | 18,024,029 | 6.0 | 77,711 | 6.9 |
| Pain, Excluding Back | 2,031 | 9.8 | 4,619 | 10.7 | 3,323 | 10.8 | 36,897,164 | 12.4 | 141,492 | 12.5 |
| Carpal Tunnel | 60 | 0.3 | 167 | 0.4 | 88 | 0.3 | 896,402 | 0.3 | 5,077 | 0.5 |
| Musculoskeletal | 112 | 0.5 | 297 | 0.7 | 202 | 0.7 | 2,031,816 | 0.7 | 10,122 | 0.9 |
| Skin Disorders | 124 | 0.6 | 217 | 0.5 | 121 | 0.4 | 296,719 | 0.1 | 872 | 0.1 |
| Symptoms | 242 | 1.2 | 478 | 1.1 | 174 | 0.6 | 1,363,439 | 0.5 | 3,613 | 0.3 |
| Mental Disorders | 347 | 1.7 | 889 | 2.1 | 338 | 1.1 | 4,832,835 | 1.6 | 23,547 | 2.1 |
| Exposure | 289 | 1.4 | 371 | 0.9 | 113 | 0.4 | 194,879 | 0.1 | 136 | 0.0 |
| Other Injuries/Illnesses | 1,891 | 9.1 | 3,936 | 9.1 | 2,682 | 8.7 | 29,409,124 | 9.9 | 97,368 | 8.6 |
| Nonclassifiable | 21 | 0.1 | 298 | 0.7 | 237 | 0.8 | 4,716,452 | 1.6 | 3,243 | 0.3 |
| AGE | 20,805 | 100.0% | 43,149 | 100.0% | 30,901 | 100.0% | \$298,236,528 | 100.0% | 1,129,742 | 100.0% |
| Under 18 | 61 | 0.3 | 86 | 0.2 | 54 | 0.2 | 408,308 | 0.1 | 1,338 | 0.1 |
| 18-24 | 2,260 | 10.9 | 3,564 | 8.3 | 2,503 | 8.1 | 9,735,596 | 3.3 | 40,631 | 3.6 |
| 25-34 | 4,422 | 21.3 | 8,146 | 18.9 | 5,721 | 18.5 | 40,264,833 | 13.5 | 160,133 | 14.2 |
| 35-44 | 4,376 | 21.0 | 9,482 | 22.0 | 6,871 | 22.2 | 72,620,057 | 24.4 | 261,569 | 23.2 |
| 45-54 | 4,919 | 23.6 | 11,447 | 26.5 | 8,279 | 26.8 | 96,939,986 | 32.5 | 363,437 | 32.2 |
| 55-64 | 3,782 | 18.2 | 8,435 | 19.6 | 6,015 | 19.5 | 63,558,128 | 21.3 | 245,294 | 21.7 |
| Over 64 | 966 | 4.6 | 1,896 | 4.4 | 1,395 | 4.5 | 13,921,620 | 4.7 | 55,709 | 4.9 |
| Information Not Available | 19 | 0.1 | 93 | 0.2 | 63 | 0.2 | 788,000 | 0.3 | 1,631 | 0.1 |

Note: Cost and percent totals may not add due to rounding.

2015 HAWAII WORKERS' COMPENSATION STATISTICS

| O'AHU | REPORTED | | PROCESSED | | WITH COST | | COST | | DAYS LOST | |
|--------------------------------------|----------|--------|-----------|--------|-----------|--------|---------------|--------|-----------|--------|
| INDUSTRY | 14,061 | 100.0% | 28,862 | 100.0% | 20,721 | 100.0% | \$204,716,062 | 100.0% | 758,275 | 100.0% |
| Natural Resources & Mining | 66 | 0.5 | 124 | 0.4 | 100 | 0.5 | 770,998 | 0.4 | 2,663 | 0.4 |
| Construction | 1,206 | 8.6 | 2,256 | 7.8 | 1,830 | 8.8 | 23,476,333 | 11.5 | 69,723 | 9.2 |
| Manufacturing | 413 | 2.9 | 863 | 3.0 | 697 | 3.4 | 7,197,185 | 3.5 | 23,108 | 3.1 |
| Wholesale Trade | 500 | 3.6 | 946 | 3.3 | 760 | 3.7 | 8,721,263 | 4.3 | 28,206 | 3.7 |
| Retail Trade | 1,748 | 12.4 | 3,372 | 11.7 | 2,260 | 10.9 | 17,998,269 | 8.8 | 69,060 | 9.1 |
| Transportation & Warehousing | 1,135 | 8.1 | 2,294 | 8.0 | 1,861 | 9.0 | 21,979,729 | 10.7 | 88,288 | 11.6 |
| Utilities | 60 | 0.4 | 177 | 0.6 | 113 | 0.6 | 814,741 | 0.4 | 2,204 | 0.3 |
| Information | 216 | 1.5 | 439 | 1.5 | 314 | 1.5 | 3,570,912 | 1.7 | 8,461 | 1.1 |
| Financial Activities | 355 | 2.5 | 703 | 2.4 | 518 | 2.5 | 4,838,926 | 2.4 | 15,624 | 2.1 |
| Professional, Scientific, & Tech. | 235 | 1.7 | 420 | 1.5 | 316 | 1.5 | 2,530,200 | 1.2 | 7,345 | 1.0 |
| Management of Companies & Entrpr. | 146 | 1.0 | 246 | 0.9 | 151 | 0.7 | 1,729,564 | 0.8 | 5,069 | 0.7 |
| Administrative, Support, & Waste | 1,086 | 7.7 | 1,989 | 6.9 | 1,523 | 7.4 | 16,268,538 | 8.0 | 68,163 | 9.0 |
| Educational Services | 214 | 1.5 | 404 | 1.4 | 290 | 1.4 | 2,632,017 | 1.3 | 6,739 | 0.9 |
| Health Care & Social Assistance | 1,370 | 9.7 | 2,625 | 9.1 | 1,986 | 9.6 | 16,687,982 | 8.2 | 74,200 | 9.8 |
| Arts, Entertainment, & Recreation | 212 | 1.5 | 396 | 1.4 | 269 | 1.3 | 1,745,209 | 0.9 | 5,032 | 0.7 |
| Accommodation and Food Services | 1,935 | 13.8 | 3,517 | 12.2 | 2,578 | 12.4 | 19,671,254 | 9.6 | 87,792 | 11.6 |
| Other Services, except Public Admin. | 452 | 3.2 | 884 | 3.1 | 675 | 3.3 | 6,667,531 | 3.3 | 26,181 | 3.5 |
| Public Administration | 2,686 | 19.1 | 7,020 | 24.3 | 4,317 | 20.8 | 44,378,773 | 21.7 | 169,486 | 22.4 |
| Other | 26 | 0.2 | 187 | 0.7 | 163 | 0.8 | 3,035,638 | 1.5 | 931 | 0.1 |
| PART OF BODY | 14,061 | 100.0% | 28,862 | 100.0% | 20,721 | 100.0% | \$204,716,062 | 100.0% | 758,275 | 100.0% |
| Ears | 46 | 0.3 | 110 | 0.4 | 56 | 0.3 | 418,899 | 0.2 | 968 | 0.1 |
| Face, Excluding Eyes, Ears | 466 | 3.3 | 799 | 2.8 | 521 | 2.5 | 2,080,865 | 1.0 | 7,327 | 1.0 |
| Eyes | 432 | 3.1 | 657 | 2.3 | 428 | 2.1 | 855,614 | 0.4 | 2,270 | 0.3 |
| Head, Excluding Ears, Face, Eyes | 464 | 3.3 | 874 | 3.0 | 606 | 2.9 | 5,055,057 | 2.5 | 19,354 | 2.6 |
| Neck | 182 | 1.3 | 392 | 1.4 | 292 | 1.4 | 3,295,039 | 1.6 | 9,295 | 1.2 |
| Trunk, Excluding Back | 1,522 | 10.8 | 3,304 | 11.5 | 2,436 | 11.8 | 35,620,323 | 17.4 | 120,482 | 15.9 |
| Back (Spine/Spinal Cord) | 1,930 | 13.7 | 4,494 | 15.6 | 3,472 | 16.8 | 44,370,080 | 21.7 | 174,178 | 23.0 |
| Arms | 777 | 5.5 | 1,499 | 5.2 | 1,057 | 5.1 | 8,931,190 | 4.4 | 35,865 | 4.7 |
| Wrists | 454 | 3.2 | 955 | 3.3 | 668 | 3.2 | 5,292,709 | 2.6 | 22,871 | 3.0 |
| Hands, Excluding Fingers | 703 | 5.0 | 1,159 | 4.0 | 802 | 3.9 | 3,375,950 | 1.7 | 11,716 | 1.6 |
| Fingers | 1,890 | 13.4 | 3,069 | 10.6 | 2,223 | 10.7 | 5,078,721 | 2.5 | 16,684 | 2.2 |
| Upper Extremities, Multiple | 270 | 1.9 | 543 | 1.9 | 371 | 1.8 | 2,715,368 | 1.3 | 11,226 | 1.5 |
| Legs | 1,474 | 10.5 | 3,332 | 11.5 | 2,452 | 11.8 | 27,339,620 | 13.4 | 108,138 | 14.3 |
| Ankles | 570 | 4.1 | 1,055 | 3.7 | 794 | 3.8 | 5,394,050 | 2.6 | 23,410 | 3.1 |
| Feet, Excluding Toes | 453 | 3.2 | 779 | 2.7 | 555 | 2.7 | 3,137,329 | 1.5 | 10,388 | 1.4 |
| Toes | 178 | 1.3 | 301 | 1.0 | 217 | 1.1 | 641,467 | 0.3 | 2,958 | 0.4 |
| Lower Extremities, Multiple | 165 | 1.2 | 339 | 1.2 | 245 | 1.2 | 2,405,206 | 1.2 | 8,209 | 1.1 |
| Body Systems | 545 | 3.9 | 1,085 | 3.8 | 407 | 2.0 | 4,588,774 | 2.2 | 16,171 | 2.1 |
| Multiple Body Parts | 1,491 | 10.6 | 3,951 | 13.7 | 3,013 | 14.5 | 42,191,383 | 20.6 | 152,288 | 20.1 |
| Nonclassifiable | 49 | 0.4 | 165 | 0.6 | 106 | 0.5 | 1,928,418 | 0.9 | 4,477 | 0.6 |
| SOURCE OF INJURY OR ILLNESS | 14,061 | 100.0% | 28,862 | 100.0% | 20,721 | 100.0% | \$204,716,062 | 100.0% | 758,275 | 100.0% |
| Chemical, Chemical Product | 283 | 2.0 | 450 | 1.6 | 270 | 1.3 | 982,285 | 0.5 | 2,388 | 0.3 |
| Containers | 1,941 | 13.8 | 3,926 | 13.6 | 2,940 | 14.2 | 28,675,177 | 14.0 | 122,927 | 16.2 |
| Furniture, Fixtures | 787 | 5.6 | 1,570 | 5.4 | 1,117 | 5.4 | 8,681,964 | 4.2 | 35,238 | 4.7 |
| Machinery | 795 | 5.7 | 1,509 | 5.2 | 1,122 | 5.4 | 12,574,827 | 6.1 | 39,604 | 5.2 |
| Building Materials | 404 | 2.9 | 727 | 2.5 | 562 | 2.7 | 6,867,505 | 3.4 | 23,031 | 3.0 |
| Vehicle, Mobile Equipment Parts | 85 | 0.6 | 214 | 0.7 | 176 | 0.9 | 2,047,677 | 1.0 | 6,340 | 0.8 |
| Other Parts and Materials | 407 | 2.9 | 728 | 2.5 | 548 | 2.6 | 4,209,787 | 2.1 | 9,835 | 1.3 |
| Plants, Animals, Minerals | 645 | 4.6 | 1,052 | 3.6 | 659 | 3.2 | 3,060,288 | 1.5 | 10,501 | 1.4 |
| Person, Injured Worker | 1,714 | 12.2 | 3,902 | 13.5 | 2,626 | 12.7 | 29,449,622 | 14.4 | 117,746 | 15.5 |
| Person, Other than Injured Worker | 1,093 | 7.8 | 2,233 | 7.7 | 1,512 | 7.3 | 13,368,964 | 6.5 | 60,180 | 7.9 |
| Floors, Walkways, Ground | 1,884 | 13.4 | 4,443 | 15.4 | 3,341 | 16.1 | 39,424,692 | 19.3 | 144,851 | 19.1 |
| Structures, Other Surfaces | 535 | 3.8 | 969 | 3.4 | 675 | 3.3 | 5,130,033 | 2.5 | 21,041 | 2.8 |
| Handtools (Nonpowered) | 668 | 4.8 | 1,193 | 4.1 | 854 | 4.1 | 4,177,318 | 2.0 | 13,753 | 1.8 |
| Handtools (Powered) | 221 | 1.6 | 399 | 1.4 | 318 | 1.5 | 2,339,269 | 1.1 | 9,905 | 1.3 |
| Other Tools, Instruments, Equipment | 642 | 4.6 | 1,231 | 4.3 | 862 | 4.2 | 6,222,602 | 3.0 | 24,705 | 3.3 |
| Highway Vehicle, Motorized | 669 | 4.8 | 1,641 | 5.7 | 1,280 | 6.2 | 18,120,704 | 8.9 | 58,309 | 7.7 |
| Nonpowered Plant Vehicles | 272 | 1.9 | 519 | 1.8 | 396 | 1.9 | 3,808,314 | 1.9 | 16,851 | 2.2 |
| Other Vehicles | 214 | 1.5 | 456 | 1.6 | 372 | 1.8 | 4,736,172 | 2.3 | 15,995 | 2.1 |
| Scrap, Waste, Debris | 373 | 2.7 | 542 | 1.9 | 349 | 1.7 | 1,263,022 | 0.6 | 3,394 | 0.5 |
| Other Sources | 429 | 3.1 | 1,158 | 4.0 | 742 | 3.6 | 9,575,840 | 4.7 | 21,681 | 2.9 |

Note: Cost and percent totals may not add due to rounding.

2015 HAWAII WORKERS' COMPENSATION STATISTICS

| O'AHU | REPORTED | | PROCESSED | | WITH COST | | COST | | DAYS LOST | |
|--------------------------------------|----------|--------|-----------|--------|-----------|--------|---------------|--------|-----------|--------|
| OCCUPATION | 14,061 | 100.0% | 28,862 | 100.0% | 20,721 | 100.0% | \$204,716,062 | 100.0% | 758,275 | 100.0% |
| Executive, Admin. & Managerial | 427 | 3.0 | 1,005 | 3.5 | 699 | 3.4 | 8,205,979 | 4.0 | 19,205 | 2.5 |
| Professional Specialty | 1,087 | 7.7 | 2,508 | 8.7 | 1,669 | 8.1 | 13,092,733 | 6.4 | 40,957 | 5.4 |
| Technical Support | 347 | 2.5 | 705 | 2.4 | 474 | 2.3 | 4,141,079 | 2.0 | 16,967 | 2.2 |
| Sales | 936 | 6.7 | 1,822 | 6.3 | 1,167 | 5.6 | 10,554,024 | 5.2 | 36,037 | 4.8 |
| Administrative Support | 839 | 6.0 | 1,902 | 6.6 | 1,270 | 6.1 | 10,584,993 | 5.2 | 44,281 | 5.8 |
| Services | 4,672 | 33.2 | 9,296 | 32.2 | 6,384 | 30.8 | 56,293,285 | 27.5 | 237,315 | 31.3 |
| Agricultural, Forestry & Fishing | 535 | 3.8 | 1,047 | 3.6 | 761 | 3.7 | 6,568,100 | 3.2 | 31,955 | 4.2 |
| Mechanic, Repairer | 893 | 6.4 | 1,831 | 6.3 | 1,428 | 6.9 | 14,950,649 | 7.3 | 47,780 | 6.3 |
| Construction Trades | 917 | 6.5 | 1,817 | 6.3 | 1,455 | 7.0 | 19,082,344 | 9.3 | 54,713 | 7.2 |
| Precision Production | 242 | 1.7 | 489 | 1.7 | 370 | 1.8 | 3,446,952 | 1.7 | 12,463 | 1.6 |
| Operator, Fabricator, Inspector | 202 | 1.4 | 382 | 1.3 | 299 | 1.4 | 2,271,921 | 1.1 | 6,456 | 0.9 |
| Transportation, Material Moving | 1,011 | 7.2 | 2,272 | 7.9 | 1,826 | 8.8 | 24,126,244 | 11.8 | 97,557 | 12.9 |
| Handler, Helper, Laborer | 1,857 | 13.2 | 3,474 | 12.0 | 2,687 | 13.0 | 27,604,926 | 13.5 | 108,298 | 14.3 |
| Nonclassifiable | 96 | 0.7 | 312 | 1.1 | 232 | 1.1 | 3,792,833 | 1.9 | 4,291 | 0.6 |
| NATURE OF INJURY OR ILLNESS | 14,061 | 100.0% | 28,862 | 100.0% | 20,721 | 100.0% | \$204,716,062 | 100.0% | 758,275 | 100.0% |
| Traumatic Injuries | 1,344 | 9.6 | 3,119 | 10.8 | 2,246 | 10.8 | 25,015,562 | 12.2 | 99,255 | 13.1 |
| Fracture | 422 | 3.0 | 1,080 | 3.7 | 863 | 4.2 | 11,725,836 | 5.7 | 38,636 | 5.1 |
| Sprains, Strains | 3,721 | 26.5 | 8,074 | 28.0 | 6,200 | 29.9 | 71,058,794 | 34.7 | 289,983 | 38.2 |
| Cut, Laceration | 1,715 | 12.2 | 2,744 | 9.5 | 1,988 | 9.6 | 5,369,661 | 2.6 | 15,448 | 2.0 |
| Puncture, Excluding Bites | 385 | 2.7 | 586 | 2.0 | 395 | 1.9 | 722,276 | 0.4 | 2,136 | 0.3 |
| Abrasions, Scratches | 250 | 1.8 | 417 | 1.4 | 277 | 1.3 | 1,504,636 | 0.7 | 5,152 | 0.7 |
| Bruises, Contusions | 1,354 | 9.6 | 2,331 | 8.1 | 1,665 | 8.0 | 10,756,127 | 5.3 | 38,455 | 5.1 |
| Foreign Bodies | 159 | 1.1 | 221 | 0.8 | 157 | 0.8 | 227,122 | 0.1 | 330 | 0.0 |
| Heat Burns | 274 | 2.0 | 464 | 1.6 | 313 | 1.5 | 996,698 | 0.5 | 3,232 | 0.4 |
| Multiple Injuries/Disorders | 385 | 2.7 | 865 | 3.0 | 661 | 3.2 | 7,429,304 | 3.6 | 23,372 | 3.1 |
| Back Pain | 580 | 4.1 | 1,364 | 4.7 | 1,018 | 4.9 | 12,726,882 | 6.2 | 52,118 | 6.9 |
| Pain, Excluding Back | 1,444 | 10.3 | 3,242 | 11.2 | 2,338 | 11.3 | 26,522,919 | 13.0 | 99,032 | 13.1 |
| Carpal Tunnel | 46 | 0.3 | 123 | 0.4 | 62 | 0.3 | 613,575 | 0.3 | 3,649 | 0.5 |
| Musculoskeletal | 79 | 0.6 | 207 | 0.7 | 141 | 0.7 | 1,323,757 | 0.7 | 6,303 | 0.8 |
| Skin Disorders | 86 | 0.6 | 156 | 0.5 | 90 | 0.4 | 276,586 | 0.1 | 860 | 0.1 |
| Symptoms | 157 | 1.1 | 302 | 1.1 | 100 | 0.5 | 756,919 | 0.4 | 1,818 | 0.2 |
| Mental Disorders | 183 | 1.3 | 483 | 1.7 | 195 | 0.9 | 2,837,995 | 1.4 | 12,268 | 1.6 |
| Exposure | 212 | 1.5 | 272 | 0.9 | 59 | 0.3 | 146,309 | 0.1 | 100 | 0.0 |
| Other Injuries/Illnesses | 1,247 | 8.9 | 2,593 | 9.0 | 1,774 | 8.6 | 21,012,202 | 10.3 | 64,350 | 8.5 |
| Nonclassifiable | 18 | 0.1 | 219 | 0.8 | 179 | 0.9 | 3,692,902 | 1.8 | 1,778 | 0.2 |
| EVENT OR EXPOSURE | 14,061 | 100.0% | 28,862 | 100.0% | 20,721 | 100.0% | \$204,716,062 | 100.0% | 758,275 | 100.0% |
| Struck Against | 1,191 | 8.5 | 1,945 | 6.7 | 1,329 | 6.4 | 5,615,178 | 2.7 | 21,278 | 2.8 |
| Struck By | 1,985 | 14.1 | 3,426 | 11.9 | 2,516 | 12.1 | 14,636,668 | 7.2 | 46,970 | 6.2 |
| Caught In, Under, or Between | 487 | 3.5 | 831 | 2.9 | 619 | 3.0 | 2,734,121 | 1.3 | 9,581 | 1.3 |
| Rubbed or Abraded | 183 | 1.3 | 256 | 0.9 | 183 | 0.9 | 359,664 | 0.2 | 782 | 0.1 |
| Other Contact with Object, Equipment | 304 | 2.2 | 487 | 1.7 | 335 | 1.6 | 1,022,209 | 0.5 | 3,540 | 0.5 |
| Falls (From Elevation) | 622 | 4.4 | 1,503 | 5.2 | 1,185 | 5.7 | 16,637,435 | 8.1 | 55,389 | 7.3 |
| Falls (To Same Level) | 1,508 | 10.7 | 3,482 | 12.1 | 2,577 | 12.4 | 26,784,918 | 13.1 | 105,215 | 13.9 |
| Falls (Other) | 53 | 0.4 | 155 | 0.5 | 115 | 0.6 | 1,893,677 | 0.9 | 5,479 | 0.7 |
| Bodily Reaction | 1,245 | 8.9 | 2,691 | 9.3 | 2,004 | 9.7 | 21,238,116 | 10.4 | 83,968 | 11.1 |
| Overexertion | 3,332 | 23.7 | 7,423 | 25.7 | 5,670 | 27.4 | 71,537,623 | 34.9 | 285,184 | 37.6 |
| Repetitive Motion | 252 | 1.8 | 656 | 2.3 | 404 | 2.0 | 4,173,502 | 2.0 | 21,988 | 2.9 |
| Heart Attacks and Strokes | 18 | 0.1 | 55 | 0.2 | 17 | 0.1 | 651,852 | 0.3 | 589 | 0.1 |
| Contact (Electrical) | 23 | 0.2 | 59 | 0.2 | 39 | 0.2 | 472,208 | 0.2 | 1,451 | 0.2 |
| Contact (Temperature Extremes) | 305 | 2.2 | 503 | 1.7 | 329 | 1.6 | 824,037 | 0.4 | 3,050 | 0.4 |
| Exposure (Noise) | 16 | 0.1 | 56 | 0.2 | 21 | 0.1 | 121,652 | 0.1 | 349 | 0.1 |
| Exposure (Harmful Substance) | 856 | 6.1 | 1,527 | 5.3 | 799 | 3.9 | 3,521,963 | 1.7 | 12,349 | 1.6 |
| Accidents (Highway Vehicle) | 315 | 2.2 | 872 | 3.0 | 698 | 3.4 | 9,908,876 | 4.8 | 31,520 | 4.2 |
| Accidents (Non-Highway Vehicle) | 93 | 0.7 | 186 | 0.6 | 150 | 0.7 | 2,647,419 | 1.3 | 8,736 | 1.2 |
| Accidents (Other Transportation) | 146 | 1.0 | 330 | 1.1 | 263 | 1.3 | 4,505,258 | 2.2 | 14,083 | 1.9 |
| Explosions | 14 | 0.1 | 33 | 0.1 | 26 | 0.1 | 459,078 | 0.2 | 778 | 0.1 |
| Assaults, Violent Acts | 826 | 5.9 | 1,634 | 5.7 | 1,057 | 5.1 | 8,298,357 | 4.1 | 34,397 | 4.5 |
| Other Events/Exposures | 144 | 1.0 | 239 | 0.8 | 81 | 0.4 | 1,313,233 | 0.6 | 1,399 | 0.2 |
| Nonclassifiable | 143 | 1.0 | 513 | 1.8 | 304 | 1.5 | 5,359,018 | 2.6 | 10,200 | 1.4 |

Note: Cost and percent totals may not add due to rounding.

2015 HAWAII WORKERS' COMPENSATION STATISTICS

| MAUI | | REPORTED | | PROCESSED | | WITH COST | | COST | | DAYS LOST | |
|--------------------------------------|--|----------|--------|-----------|--------|-----------|--------|--------------|--------|-----------|--------|
| INDUSTRY | | 2,979 | 100.0% | 6,014 | 100.0% | 4,316 | 100.0% | \$38,656,589 | 100.0% | 132,648 | 100.0% |
| Natural Resources & Mining | | 106 | 3.6 | 225 | 3.7 | 161 | 3.7 | 1,454,884 | 3.8 | 3,114 | 2.4 |
| Construction | | 159 | 5.3 | 343 | 5.7 | 260 | 6.0 | 3,833,785 | 9.9 | 11,484 | 8.7 |
| Manufacturing | | 33 | 1.1 | 72 | 1.2 | 57 | 1.3 | 842,180 | 2.2 | 2,329 | 1.8 |
| Wholesale Trade | | 94 | 3.2 | 150 | 2.5 | 111 | 2.6 | 767,385 | 2.0 | 2,174 | 1.6 |
| Retail Trade | | 351 | 11.8 | 641 | 10.7 | 427 | 9.9 | 3,599,086 | 9.3 | 13,964 | 10.5 |
| Transportation & Warehousing | | 164 | 5.5 | 319 | 5.3 | 260 | 6.0 | 2,058,103 | 5.3 | 7,664 | 5.8 |
| Utilities | | 21 | 0.7 | 46 | 0.8 | 31 | 0.7 | 244,201 | 0.6 | 593 | 0.4 |
| Information | | 16 | 0.5 | 36 | 0.6 | 26 | 0.6 | 128,989 | 0.3 | 150 | 0.1 |
| Financial Activities | | 118 | 4.0 | 216 | 3.6 | 153 | 3.5 | 1,798,317 | 4.7 | 5,879 | 4.4 |
| Professional, Scientific, & Tech. | | 17 | 0.6 | 42 | 0.7 | 36 | 0.8 | 621,767 | 1.6 | 1,183 | 0.9 |
| Management of Companies & Entrpr. | | 18 | 0.6 | 36 | 0.6 | 22 | 0.5 | 446,827 | 1.2 | 1,059 | 0.8 |
| Administrative, Support, & Waste | | 320 | 10.7 | 577 | 9.6 | 440 | 10.2 | 4,075,547 | 10.5 | 18,802 | 14.2 |
| Educational Services | | 32 | 1.1 | 65 | 1.1 | 55 | 1.3 | 567,947 | 1.5 | 2,080 | 1.6 |
| Health Care & Social Assistance | | 201 | 6.8 | 359 | 6.0 | 244 | 5.7 | 2,114,248 | 5.5 | 8,390 | 6.3 |
| Arts, Entertainment, & Recreation | | 50 | 1.7 | 83 | 1.4 | 65 | 1.5 | 493,121 | 1.3 | 1,285 | 1.0 |
| Accommodation and Food Services | | 748 | 25.1 | 1,320 | 22.0 | 989 | 22.9 | 6,213,348 | 16.1 | 22,048 | 16.6 |
| Other Services, except Public Admin. | | 83 | 2.8 | 166 | 2.8 | 133 | 3.1 | 1,283,817 | 3.3 | 2,603 | 2.0 |
| Public Administration | | 446 | 15.0 | 1,273 | 21.2 | 815 | 18.9 | 7,502,474 | 19.4 | 27,847 | 21.0 |
| Other | | 2 | 0.1 | 45 | 0.8 | 31 | 0.7 | 610,563 | 1.6 | 0 | 0.0 |
| PART OF BODY | | 2,979 | 100.0% | 6,014 | 100.0% | 4,316 | 100.0% | \$38,656,589 | 100.0% | 132,648 | 100.0% |
| Ears | | 17 | 0.6 | 26 | 0.4 | 16 | 0.4 | 21,832 | 0.1 | 4 | 0.0 |
| Face, Excluding Eyes, Ears | | 88 | 3.0 | 154 | 2.6 | 103 | 2.4 | 599,424 | 1.6 | 1,560 | 1.2 |
| Eyes | | 103 | 3.5 | 162 | 2.7 | 117 | 2.7 | 214,430 | 0.6 | 255 | 0.2 |
| Head, Excluding Ears, Face, Eyes | | 104 | 3.5 | 186 | 3.1 | 121 | 2.8 | 865,819 | 2.2 | 3,308 | 2.5 |
| Neck | | 36 | 1.2 | 86 | 1.4 | 64 | 1.5 | 867,725 | 2.2 | 1,893 | 1.4 |
| Trunk, Excluding Back | | 340 | 11.4 | 740 | 12.3 | 559 | 13.0 | 6,639,100 | 17.2 | 23,054 | 17.4 |
| Back (Spine/Spinal Cord) | | 437 | 14.7 | 971 | 16.2 | 746 | 17.3 | 7,931,723 | 20.5 | 32,457 | 24.5 |
| Arms | | 158 | 5.3 | 313 | 5.2 | 226 | 5.2 | 1,691,195 | 4.4 | 6,083 | 4.6 |
| Wrists | | 104 | 3.5 | 199 | 3.3 | 139 | 3.2 | 1,108,773 | 2.9 | 4,025 | 3.0 |
| Hands, Excluding Fingers | | 117 | 3.9 | 205 | 3.4 | 149 | 3.5 | 582,321 | 1.5 | 1,343 | 1.0 |
| Fingers | | 392 | 13.2 | 655 | 10.9 | 473 | 11.0 | 1,574,414 | 4.1 | 4,379 | 3.3 |
| Upper Extremities, Multiple | | 51 | 1.7 | 109 | 1.8 | 73 | 1.7 | 588,093 | 1.5 | 2,700 | 2.0 |
| Legs | | 275 | 9.2 | 648 | 10.8 | 462 | 10.7 | 4,424,849 | 11.5 | 15,762 | 11.9 |
| Ankles | | 109 | 3.7 | 207 | 3.4 | 154 | 3.6 | 721,352 | 1.9 | 3,404 | 2.6 |
| Feet, Excluding Toes | | 78 | 2.6 | 143 | 2.4 | 102 | 2.4 | 708,573 | 1.8 | 2,636 | 2.0 |
| Toes | | 41 | 1.4 | 64 | 1.1 | 44 | 1.0 | 123,873 | 0.3 | 549 | 0.4 |
| Lower Extremities, Multiple | | 39 | 1.3 | 73 | 1.2 | 50 | 1.2 | 365,085 | 0.9 | 933 | 0.7 |
| Body Systems | | 149 | 5.0 | 273 | 4.5 | 121 | 2.8 | 810,118 | 2.1 | 2,457 | 1.9 |
| Multiple Body Parts | | 339 | 11.4 | 789 | 13.1 | 588 | 13.6 | 7,839,845 | 20.3 | 25,465 | 19.2 |
| Nonclassifiable | | 2 | 0.1 | 11 | 0.2 | 9 | 0.2 | 978,045 | 2.5 | 381 | 0.3 |
| SOURCE OF INJURY OR ILLNESS | | 2,979 | 100.0% | 6,014 | 100.0% | 4,316 | 100.0% | \$38,656,589 | 100.0% | 132,648 | 100.0% |
| Chemical, Chemical Product | | 56 | 1.9 | 97 | 1.6 | 63 | 1.5 | 161,782 | 0.4 | 510 | 0.4 |
| Containers | | 425 | 14.3 | 828 | 13.8 | 616 | 14.3 | 4,735,410 | 12.3 | 17,503 | 13.2 |
| Furniture, Fixtures | | 196 | 6.6 | 337 | 5.6 | 243 | 5.6 | 1,665,848 | 4.3 | 7,201 | 5.4 |
| Machinery | | 166 | 5.6 | 337 | 5.6 | 268 | 6.2 | 2,390,480 | 6.2 | 6,059 | 4.6 |
| Building Materials | | 64 | 2.2 | 129 | 2.1 | 93 | 2.2 | 728,922 | 1.9 | 3,267 | 2.5 |
| Vehicle, Mobile Equipment Parts | | 28 | 0.9 | 59 | 1.0 | 46 | 1.1 | 403,474 | 1.0 | 517 | 0.4 |
| Other Parts and Materials | | 66 | 2.2 | 124 | 2.1 | 104 | 2.4 | 884,027 | 2.3 | 1,253 | 0.9 |
| Plants, Animals, Minerals | | 206 | 6.9 | 308 | 5.1 | 206 | 4.8 | 648,078 | 1.7 | 2,175 | 1.6 |
| Person, Injured Worker | | 351 | 11.8 | 839 | 14.0 | 542 | 12.6 | 5,656,399 | 14.6 | 23,337 | 17.6 |
| Person, Other than Injured Worker | | 139 | 4.7 | 338 | 5.6 | 227 | 5.3 | 2,634,122 | 6.8 | 10,697 | 8.1 |
| Floors, Walkways, Ground | | 439 | 14.7 | 990 | 16.5 | 730 | 16.9 | 8,514,460 | 22.0 | 28,942 | 21.8 |
| Structures, Other Surfaces | | 109 | 3.7 | 201 | 3.3 | 133 | 3.1 | 1,150,227 | 3.0 | 4,250 | 3.2 |
| Handtools (Nonpowered) | | 163 | 5.5 | 272 | 4.5 | 192 | 4.5 | 656,311 | 1.7 | 3,066 | 2.3 |
| Handtools (Powered) | | 41 | 1.4 | 76 | 1.3 | 61 | 1.4 | 573,464 | 1.5 | 2,591 | 2.0 |
| Other Tools, Instruments, Equipment | | 121 | 4.1 | 255 | 4.2 | 192 | 4.5 | 1,390,239 | 3.6 | 6,698 | 5.1 |
| Highway Vehicle, Motorized | | 126 | 4.2 | 272 | 4.5 | 212 | 4.9 | 2,320,078 | 6.0 | 6,710 | 5.1 |
| Nonpowered Plant Vehicles | | 64 | 2.2 | 113 | 1.9 | 97 | 2.3 | 580,742 | 1.5 | 2,716 | 2.1 |
| Other Vehicles | | 49 | 1.6 | 111 | 1.9 | 83 | 1.9 | 1,913,053 | 5.0 | 3,131 | 2.4 |
| Scrap, Waste, Debris | | 73 | 2.5 | 102 | 1.7 | 68 | 1.6 | 59,815 | 0.2 | 156 | 0.1 |
| Other Sources | | 97 | 3.3 | 226 | 3.8 | 140 | 3.2 | 1,589,658 | 4.1 | 1,869 | 1.4 |

Note: Cost and percent totals may not add due to rounding.

2015 HAWAI'I WORKERS' COMPENSATION STATISTICS

| MAUI | REPORTED | | PROCESSED | | WITH COST | | COST | | DAYS LOST | |
|--------------------------------------|-----------------|---------------|------------------|---------------|------------------|---------------|---------------------|---------------|------------------|---------------|
| OCCUPATION | 2,979 | 100.0% | 6,014 | 100.0% | 4,316 | 100.0% | \$38,656,589 | 100.0% | 132,648 | 100.0% |
| Executive, Admin. & Managerial | 101 | 3.4 | 224 | 3.7 | 157 | 3.6 | 1,547,528 | 4.0 | 1,661 | 1.3 |
| Professional Specialty | 176 | 5.9 | 440 | 7.3 | 270 | 6.3 | 3,307,374 | 8.6 | 7,689 | 5.8 |
| Technical Support | 55 | 1.9 | 122 | 2.0 | 81 | 1.9 | 747,853 | 1.9 | 2,553 | 1.9 |
| Sales | 209 | 7.0 | 396 | 6.6 | 269 | 6.2 | 2,853,984 | 7.4 | 12,386 | 9.3 |
| Administrative Support | 180 | 6.0 | 411 | 6.8 | 276 | 6.4 | 2,278,356 | 5.9 | 9,578 | 7.2 |
| Services | 1,067 | 35.8 | 2,081 | 34.6 | 1,501 | 34.8 | 10,509,395 | 27.2 | 43,398 | 32.7 |
| Agricultural, Forestry & Fishing | 192 | 6.5 | 353 | 5.9 | 271 | 6.3 | 2,061,729 | 5.3 | 8,408 | 6.3 |
| Mechanic, Repairer | 254 | 8.5 | 477 | 7.9 | 353 | 8.2 | 2,750,289 | 7.1 | 7,769 | 5.9 |
| Construction Trades | 152 | 5.1 | 331 | 5.5 | 233 | 5.4 | 4,044,104 | 10.5 | 11,801 | 8.9 |
| Precision Production | 31 | 1.0 | 76 | 1.3 | 63 | 1.5 | 560,098 | 1.5 | 1,257 | 1.0 |
| Operator, Fabricator, Inspector | 45 | 1.5 | 77 | 1.3 | 66 | 1.5 | 665,505 | 1.7 | 2,045 | 1.5 |
| Transportation, Material Moving | 174 | 5.8 | 369 | 6.1 | 291 | 6.7 | 3,302,336 | 8.5 | 13,321 | 10.0 |
| Handler, Helper, Laborer | 331 | 11.1 | 600 | 10.0 | 445 | 10.3 | 3,588,633 | 9.3 | 10,705 | 8.1 |
| Nonclassifiable | 12 | 0.4 | 57 | 1.0 | 40 | 0.9 | 439,405 | 1.1 | 77 | 0.1 |
| NATURE OF INJURY OR ILLNESS | 2,979 | 100.0% | 6,014 | 100.0% | 4,316 | 100.0% | \$38,656,589 | 100.0% | 132,648 | 100.0% |
| Traumatic Injuries | 291 | 9.8 | 607 | 10.1 | 438 | 10.2 | 5,138,001 | 13.3 | 15,654 | 11.8 |
| Fracture | 90 | 3.0 | 248 | 4.1 | 202 | 4.7 | 3,409,986 | 8.8 | 9,043 | 6.8 |
| Sprains, Strains | 842 | 28.3 | 1,779 | 29.6 | 1,362 | 31.6 | 13,102,105 | 33.9 | 50,024 | 37.7 |
| Cut, Laceration | 377 | 12.7 | 596 | 9.9 | 418 | 9.7 | 1,520,505 | 3.9 | 2,853 | 2.2 |
| Puncture, Excluding Bites | 65 | 2.2 | 110 | 1.8 | 72 | 1.7 | 62,891 | 0.2 | 56 | 0.0 |
| Abrasions, Scratches | 48 | 1.6 | 91 | 1.5 | 61 | 1.4 | 195,596 | 0.5 | 1,001 | 0.8 |
| Bruises, Contusions | 301 | 10.1 | 512 | 8.5 | 362 | 8.4 | 1,880,528 | 4.9 | 5,882 | 4.4 |
| Foreign Bodies | 44 | 1.5 | 62 | 1.0 | 38 | 0.9 | 19,834 | 0.1 | 25 | 0.0 |
| Heat Burns | 69 | 2.3 | 113 | 1.9 | 80 | 1.9 | 417,125 | 1.1 | 1,209 | 0.9 |
| Multiple Injuries/Disorders | 88 | 3.0 | 189 | 3.1 | 137 | 3.2 | 1,430,823 | 3.7 | 4,251 | 3.2 |
| Back Pain | 98 | 3.3 | 253 | 4.2 | 198 | 4.6 | 2,351,983 | 6.1 | 12,213 | 9.2 |
| Pain, Excluding Back | 238 | 8.0 | 572 | 9.5 | 423 | 9.8 | 4,545,321 | 11.8 | 14,308 | 10.8 |
| Carpal Tunnel | 11 | 0.4 | 24 | 0.4 | 14 | 0.3 | 87,032 | 0.2 | 680 | 0.5 |
| Musculoskeletal | 14 | 0.5 | 33 | 0.6 | 22 | 0.5 | 316,422 | 0.8 | 1,555 | 1.2 |
| Skin Disorders | 14 | 0.5 | 20 | 0.3 | 12 | 0.3 | 2,938 | 0.0 | 3 | 0.0 |
| Symptoms | 35 | 1.2 | 70 | 1.2 | 25 | 0.6 | 212,430 | 0.6 | 230 | 0.2 |
| Mental Disorders | 56 | 1.9 | 132 | 2.2 | 45 | 1.0 | 461,660 | 1.2 | 2,085 | 1.6 |
| Exposure | 51 | 1.7 | 61 | 1.0 | 33 | 0.8 | 34,233 | 0.1 | 7 | 0.0 |
| Other Injuries/Illnesses | 246 | 8.3 | 515 | 8.6 | 355 | 8.2 | 3,122,544 | 8.1 | 11,569 | 8.7 |
| Nonclassifiable | 1 | 0.0 | 27 | 0.5 | 19 | 0.4 | 344,632 | 0.9 | 0 | 0.0 |
| EVENT OR EXPOSURE | 2,979 | 100.0% | 6,014 | 100.0% | 4,316 | 100.0% | \$38,656,589 | 100.0% | 132,648 | 100.0% |
| Struck Against | 258 | 8.7 | 404 | 6.7 | 280 | 6.5 | 1,208,784 | 3.1 | 4,461 | 3.4 |
| Struck By | 424 | 14.2 | 731 | 12.2 | 549 | 12.7 | 2,488,595 | 6.4 | 7,803 | 5.9 |
| Caught In, Under, or Between | 93 | 3.1 | 176 | 2.9 | 135 | 3.1 | 572,764 | 1.5 | 2,037 | 1.5 |
| Rubbed or Abraded | 52 | 1.8 | 73 | 1.2 | 45 | 1.0 | 74,407 | 0.2 | 26 | 0.0 |
| Other Contact with Object, Equipment | 88 | 3.0 | 122 | 2.0 | 73 | 1.7 | 109,933 | 0.3 | 602 | 0.5 |
| Falls (From Elevation) | 138 | 4.6 | 319 | 5.3 | 238 | 5.5 | 2,975,655 | 7.7 | 10,256 | 7.7 |
| Falls (To Same Level) | 379 | 12.7 | 809 | 13.5 | 598 | 13.9 | 6,188,452 | 16.0 | 20,057 | 15.1 |
| Falls (Other) | 16 | 0.5 | 34 | 0.6 | 26 | 0.6 | 485,662 | 1.3 | 1,484 | 1.1 |
| Bodily Reaction | 242 | 8.1 | 553 | 9.2 | 404 | 9.4 | 3,906,020 | 10.1 | 16,581 | 12.5 |
| Overexertion | 706 | 23.7 | 1,529 | 25.4 | 1,185 | 27.5 | 12,415,616 | 32.1 | 50,410 | 38.0 |
| Repetitive Motion | 45 | 1.5 | 145 | 2.4 | 88 | 2.0 | 1,105,122 | 2.9 | 4,696 | 3.5 |
| Heart Attacks and Strokes | 7 | 0.2 | 14 | 0.2 | 4 | 0.1 | 137,023 | 0.4 | 297 | 0.2 |
| Contact (Electrical) | 2 | 0.1 | 5 | 0.1 | 4 | 0.1 | 18,683 | 0.1 | (1) | 0.0 |
| Contact (Temperature Extremes) | 79 | 2.7 | 123 | 2.1 | 85 | 2.0 | 258,533 | 0.7 | 865 | 0.7 |
| Exposure (Noise) | 1 | 0.0 | 7 | 0.1 | 2 | 0.1 | 6,237 | 0.0 | 0 | 0.0 |
| Exposure (Harmful Substance) | 203 | 6.8 | 373 | 6.2 | 206 | 4.8 | 703,615 | 1.8 | 2,234 | 1.7 |
| Accidents (Highway Vehicle) | 41 | 1.4 | 107 | 1.8 | 84 | 2.0 | 1,136,089 | 2.9 | 3,860 | 2.9 |
| Accidents (Non-Highway Vehicle) | 34 | 1.1 | 73 | 1.2 | 53 | 1.2 | 622,783 | 1.6 | 1,425 | 1.1 |
| Accidents (Other Transportation) | 34 | 1.1 | 71 | 1.2 | 54 | 1.3 | 1,857,373 | 4.8 | 1,535 | 1.2 |
| Explosions | 3 | 0.1 | 10 | 0.2 | 9 | 0.2 | 200,783 | 0.5 | 66 | 0.1 |
| Assaults, Violent Acts | 97 | 3.3 | 220 | 3.7 | 131 | 3.0 | 1,093,712 | 2.8 | 3,319 | 2.5 |
| Other Events/Exposures | 15 | 0.5 | 25 | 0.4 | 13 | 0.3 | 100,413 | 0.3 | 133 | 0.1 |
| Nonclassifiable | 22 | 0.7 | 91 | 1.5 | 50 | 1.2 | 990,335 | 2.6 | 502 | 0.4 |

Note: Cost and percent totals may not add due to rounding.

2015 HAWAI'I WORKERS' COMPENSATION STATISTICS

| HAWAI'I | REPORTED | | PROCESSED | | WITH COST | | COST | | DAYS LOST | |
|--------------------------------------|----------|--------|-----------|--------|-----------|--------|--------------|--------|-----------|--------|
| INDUSTRY | 2,398 | 100.0% | 5,659 | 100.0% | 4,068 | 100.0% | \$41,747,435 | 100.0% | 183,950 | 100.0% |
| Natural Resources & Mining | 74 | 3.1 | 162 | 2.9 | 127 | 3.1 | 1,392,542 | 3.3 | 6,938 | 3.8 |
| Construction | 185 | 7.7 | 400 | 7.1 | 315 | 7.7 | 3,797,812 | 9.1 | 11,382 | 6.2 |
| Manufacturing | 46 | 1.9 | 113 | 2.0 | 96 | 2.4 | 1,029,256 | 2.5 | 2,802 | 1.5 |
| Wholesale Trade | 74 | 3.1 | 152 | 2.7 | 112 | 2.8 | 1,234,070 | 3.0 | 3,410 | 1.9 |
| Retail Trade | 340 | 14.2 | 684 | 12.1 | 492 | 12.1 | 5,270,219 | 12.6 | 25,369 | 13.8 |
| Transportation & Warehousing | 97 | 4.1 | 245 | 4.3 | 199 | 4.9 | 2,430,254 | 5.8 | 11,351 | 6.2 |
| Utilities | 24 | 1.0 | 58 | 1.0 | 38 | 0.9 | 366,817 | 0.9 | 1,344 | 0.7 |
| Information | 23 | 1.0 | 46 | 0.8 | 31 | 0.8 | 499,361 | 1.2 | 1,457 | 0.8 |
| Financial Activities | 54 | 2.3 | 123 | 2.2 | 93 | 2.3 | 1,055,440 | 2.5 | 4,887 | 2.7 |
| Professional, Scientific, & Tech. | 34 | 1.4 | 63 | 1.1 | 52 | 1.3 | 624,614 | 1.5 | 2,734 | 1.5 |
| Management of Companies & Entrpr. | 32 | 1.3 | 47 | 0.8 | 32 | 0.8 | 351,855 | 0.8 | 1,224 | 0.7 |
| Administrative, Support, & Waste | 242 | 10.1 | 478 | 8.5 | 395 | 9.7 | 4,299,065 | 10.3 | 23,017 | 12.5 |
| Educational Services | 56 | 2.3 | 102 | 1.8 | 77 | 1.9 | 561,039 | 1.3 | 1,758 | 1.0 |
| Health Care & Social Assistance | 185 | 7.7 | 430 | 7.6 | 300 | 7.4 | 4,082,941 | 9.8 | 17,910 | 9.7 |
| Arts, Entertainment, & Recreation | 31 | 1.3 | 64 | 1.1 | 52 | 1.3 | 446,080 | 1.1 | 1,659 | 0.9 |
| Accommodation and Food Services | 381 | 15.9 | 703 | 12.4 | 535 | 13.2 | 3,841,344 | 9.2 | 18,109 | 9.8 |
| Other Services, except Public Admin. | 39 | 1.6 | 97 | 1.7 | 73 | 1.8 | 1,095,759 | 2.6 | 4,025 | 2.2 |
| Public Administration | 480 | 20.0 | 1,646 | 29.1 | 1,014 | 24.9 | 8,841,661 | 21.2 | 43,099 | 23.4 |
| Other | 1 | 0.0 | 46 | 0.8 | 35 | 0.9 | 527,306 | 1.3 | 1,475 | 0.8 |
| PART OF BODY | 2,398 | 100.0% | 5,659 | 100.0% | 4,068 | 100.0% | \$41,747,435 | 100.0% | 183,950 | 100.0% |
| Ears | 11 | 0.5 | 28 | 0.5 | 14 | 0.3 | 35,612 | 0.1 | 0 | 0.0 |
| Face, Excluding Eyes, Ears | 87 | 3.6 | 160 | 2.8 | 103 | 2.5 | 399,548 | 1.0 | 1,293 | 0.7 |
| Eyes | 72 | 3.0 | 126 | 2.2 | 76 | 1.9 | 96,819 | 0.2 | 599 | 0.3 |
| Head, Excluding Ears, Face, Eyes | 84 | 3.5 | 177 | 3.1 | 119 | 2.9 | 1,870,333 | 4.5 | 6,071 | 3.3 |
| Neck | 30 | 1.3 | 81 | 1.4 | 60 | 1.5 | 879,293 | 2.1 | 3,602 | 2.0 |
| Trunk, Excluding Back | 277 | 11.6 | 662 | 11.7 | 481 | 11.8 | 5,782,760 | 13.9 | 26,141 | 14.2 |
| Back (Spine/Spinal Cord) | 351 | 14.6 | 920 | 16.3 | 688 | 16.9 | 8,869,002 | 21.2 | 42,205 | 22.9 |
| Arms | 127 | 5.3 | 269 | 4.8 | 203 | 5.0 | 1,415,540 | 3.4 | 6,672 | 3.6 |
| Wrists | 64 | 2.7 | 158 | 2.8 | 117 | 2.9 | 1,032,574 | 2.5 | 4,439 | 2.4 |
| Hands, Excluding Fingers | 115 | 4.8 | 208 | 3.7 | 149 | 3.7 | 725,200 | 1.7 | 2,226 | 1.2 |
| Fingers | 304 | 12.7 | 532 | 9.4 | 383 | 9.4 | 1,579,439 | 3.8 | 3,629 | 2.0 |
| Upper Extremities, Multiple | 37 | 1.5 | 98 | 1.7 | 69 | 1.7 | 645,998 | 1.6 | 3,524 | 1.9 |
| Legs | 268 | 11.2 | 660 | 11.7 | 506 | 12.4 | 5,311,662 | 12.7 | 24,794 | 13.5 |
| Ankles | 67 | 2.8 | 177 | 3.1 | 128 | 3.2 | 906,635 | 2.2 | 3,245 | 1.8 |
| Feet, Excluding Toes | 65 | 2.7 | 140 | 2.5 | 97 | 2.4 | 943,901 | 2.3 | 5,131 | 2.8 |
| Toes | 23 | 1.0 | 46 | 0.8 | 33 | 0.8 | 116,732 | 0.3 | 570 | 0.3 |
| Lower Extremities, Multiple | 31 | 1.3 | 67 | 1.2 | 54 | 1.3 | 557,865 | 1.3 | 3,579 | 2.0 |
| Body Systems | 102 | 4.3 | 254 | 4.5 | 118 | 2.9 | 1,372,041 | 3.3 | 6,636 | 3.6 |
| Multiple Body Parts | 280 | 11.7 | 864 | 15.3 | 643 | 15.8 | 8,808,255 | 21.1 | 38,872 | 21.1 |
| Nonclassifiable | 3 | 0.1 | 32 | 0.6 | 27 | 0.7 | 398,226 | 1.0 | 722 | 0.4 |
| SOURCE OF INJURY OR ILLNESS | 2,398 | 100.0% | 5,659 | 100.0% | 4,068 | 100.0% | \$41,747,435 | 100.0% | 183,950 | 100.0% |
| Chemical, Chemical Product | 45 | 1.9 | 93 | 1.6 | 59 | 1.5 | 373,633 | 0.9 | 1,277 | 0.7 |
| Containers | 297 | 12.4 | 681 | 12.0 | 509 | 12.5 | 5,364,246 | 12.9 | 31,046 | 16.9 |
| Furniture, Fixtures | 115 | 4.8 | 269 | 4.8 | 199 | 4.9 | 1,557,133 | 3.7 | 6,738 | 3.7 |
| Machinery | 149 | 6.2 | 315 | 5.6 | 233 | 5.7 | 2,233,663 | 5.4 | 8,945 | 4.9 |
| Building Materials | 54 | 2.3 | 139 | 2.5 | 105 | 2.6 | 1,116,858 | 2.7 | 4,640 | 2.5 |
| Vehicle, Mobile Equipment Parts | 16 | 0.7 | 49 | 0.9 | 39 | 1.0 | 431,012 | 1.0 | 2,471 | 1.3 |
| Other Parts and Materials | 83 | 3.5 | 159 | 2.8 | 117 | 2.9 | 1,058,776 | 2.5 | 3,414 | 1.9 |
| Plants, Animals, Minerals | 156 | 6.5 | 263 | 4.7 | 177 | 4.4 | 638,663 | 1.5 | 2,354 | 1.3 |
| Person, Injured Worker | 285 | 11.9 | 781 | 13.8 | 521 | 12.8 | 6,405,118 | 15.3 | 28,555 | 15.5 |
| Person, Other than Injured Worker | 171 | 7.1 | 436 | 7.7 | 281 | 6.9 | 2,742,454 | 6.6 | 12,154 | 6.6 |
| Floors, Walkways, Ground | 347 | 14.5 | 936 | 16.5 | 720 | 17.7 | 10,198,452 | 24.4 | 44,616 | 24.3 |
| Structures, Other Surfaces | 88 | 3.7 | 199 | 3.5 | 139 | 3.4 | 961,685 | 2.3 | 5,094 | 2.8 |
| Handtools (Nonpowered) | 158 | 6.6 | 252 | 4.5 | 188 | 4.6 | 778,377 | 1.9 | 4,184 | 2.3 |
| Handtools (Powered) | 38 | 1.6 | 72 | 1.3 | 55 | 1.4 | 270,273 | 0.7 | 1,176 | 0.6 |
| Other Tools, Instruments, Equipment | 104 | 4.3 | 219 | 3.9 | 153 | 3.8 | 1,345,919 | 3.2 | 6,346 | 3.5 |
| Highway Vehicle, Motorized | 107 | 4.5 | 325 | 5.7 | 254 | 6.2 | 3,517,836 | 8.4 | 9,979 | 5.4 |
| Nonpowered Plant Vehicles | 44 | 1.8 | 88 | 1.6 | 69 | 1.7 | 740,507 | 1.8 | 4,634 | 2.5 |
| Other Vehicles | 38 | 1.6 | 86 | 1.5 | 59 | 1.5 | 513,062 | 1.2 | 2,210 | 1.2 |
| Scrap, Waste, Debris | 56 | 2.3 | 97 | 1.7 | 64 | 1.6 | 133,190 | 0.3 | 379 | 0.2 |
| Other Sources | 47 | 2.0 | 200 | 3.5 | 127 | 3.1 | 1,366,578 | 3.3 | 3,738 | 2.0 |

Note: Cost and percent totals may not add due to rounding.

2015 HAWAI'I WORKERS' COMPENSATION STATISTICS

| HAWAI'I | REPORTED | | PROCESSED | | WITH COST | | COST | | DAYS LOST | |
|--------------------------------------|----------|--------|-----------|--------|-----------|--------|--------------|--------|-----------|--------|
| OCCUPATION | 2,398 | 100.0% | 5,659 | 100.0% | 4,068 | 100.0% | \$41,747,435 | 100.0% | 183,950 | 100.0% |
| Executive, Admin. & Managerial | 66 | 2.8 | 187 | 3.3 | 139 | 3.4 | 1,827,229 | 4.4 | 5,389 | 2.9 |
| Professional Specialty | 202 | 8.4 | 520 | 9.2 | 337 | 8.3 | 3,643,736 | 8.7 | 17,472 | 9.5 |
| Technical Support | 57 | 2.4 | 133 | 2.4 | 80 | 2.0 | 1,010,031 | 2.4 | 2,954 | 1.6 |
| Sales | 174 | 7.3 | 353 | 6.2 | 251 | 6.2 | 2,972,474 | 7.1 | 14,909 | 8.1 |
| Administrative Support | 105 | 4.4 | 350 | 6.2 | 229 | 5.6 | 2,137,218 | 5.1 | 10,704 | 5.8 |
| Services | 747 | 31.2 | 1,697 | 30.0 | 1,207 | 29.7 | 10,138,454 | 24.3 | 49,395 | 26.9 |
| Agricultural, Forestry & Fishing | 245 | 10.2 | 517 | 9.1 | 380 | 9.3 | 3,346,936 | 8.0 | 13,931 | 7.6 |
| Mechanic, Repairer | 157 | 6.6 | 355 | 6.3 | 262 | 6.4 | 2,930,512 | 7.0 | 10,130 | 5.5 |
| Construction Trades | 140 | 5.8 | 318 | 5.6 | 244 | 6.0 | 2,756,104 | 6.6 | 11,126 | 6.1 |
| Precision Production | 34 | 1.4 | 93 | 1.6 | 73 | 1.8 | 666,857 | 1.6 | 2,438 | 1.3 |
| Operator, Fabricator, Inspector | 30 | 1.3 | 76 | 1.3 | 65 | 1.6 | 498,080 | 1.2 | 1,039 | 0.6 |
| Transportation, Material Moving | 145 | 6.1 | 365 | 6.5 | 280 | 6.9 | 4,033,442 | 9.7 | 16,411 | 8.9 |
| Handler, Helper, Laborer | 286 | 11.9 | 632 | 11.2 | 478 | 11.8 | 5,121,467 | 12.3 | 27,761 | 15.1 |
| Nonclassifiable | 10 | 0.4 | 63 | 1.1 | 43 | 1.1 | 664,895 | 1.6 | 291 | 0.2 |
| NATURE OF INJURY OR ILLNESS | 2,398 | 100.0% | 5,659 | 100.0% | 4,068 | 100.0% | \$41,747,435 | 100.0% | 183,950 | 100.0% |
| Traumatic Injuries | 204 | 8.5 | 559 | 9.9 | 421 | 10.4 | 5,321,133 | 12.7 | 23,327 | 12.7 |
| Fracture | 71 | 3.0 | 265 | 4.7 | 219 | 5.4 | 3,362,144 | 8.1 | 10,828 | 5.9 |
| Sprains, Strains | 596 | 24.9 | 1,539 | 27.2 | 1,156 | 28.4 | 13,783,693 | 33.0 | 66,478 | 36.1 |
| Cut, Laceration | 300 | 12.5 | 511 | 9.0 | 387 | 9.5 | 1,373,550 | 3.3 | 4,809 | 2.6 |
| Puncture, Excluding Bites | 89 | 3.7 | 137 | 2.4 | 93 | 2.3 | 199,820 | 0.5 | 1,052 | 0.6 |
| Abrasions, Scratches | 33 | 1.4 | 67 | 1.2 | 44 | 1.1 | 398,931 | 1.0 | 2,794 | 1.5 |
| Bruises, Contusions | 239 | 10.0 | 434 | 7.7 | 309 | 7.6 | 1,953,988 | 4.7 | 8,203 | 4.5 |
| Foreign Bodies | 35 | 1.5 | 54 | 1.0 | 34 | 0.8 | 37,260 | 0.1 | 304 | 0.2 |
| Heat Burns | 51 | 2.1 | 85 | 1.5 | 69 | 1.7 | 383,678 | 0.9 | 1,039 | 0.6 |
| Multiple Injuries/Disorders | 81 | 3.4 | 239 | 4.2 | 170 | 4.2 | 1,843,393 | 4.4 | 5,310 | 2.9 |
| Back Pain | 89 | 3.7 | 277 | 4.9 | 202 | 5.0 | 2,442,627 | 5.9 | 11,499 | 6.3 |
| Pain, Excluding Back | 223 | 9.3 | 560 | 9.9 | 387 | 9.5 | 4,119,680 | 9.9 | 21,683 | 11.8 |
| Carpal Tunnel | 2 | 0.1 | 16 | 0.3 | 11 | 0.3 | 190,988 | 0.5 | 744 | 0.4 |
| Musculoskeletal | 16 | 0.7 | 37 | 0.7 | 25 | 0.6 | 244,281 | 0.6 | 1,607 | 0.9 |
| Skin Disorders | 12 | 0.5 | 24 | 0.4 | 12 | 0.3 | 14,474 | 0.0 | 1 | 0.0 |
| Symptoms | 20 | 0.8 | 54 | 1.0 | 26 | 0.6 | 220,859 | 0.5 | 1,051 | 0.6 |
| Mental Disorders | 62 | 2.6 | 162 | 2.9 | 64 | 1.6 | 966,129 | 2.3 | 5,371 | 2.9 |
| Exposure | 24 | 1.0 | 33 | 0.6 | 19 | 0.5 | 14,114 | 0.0 | 29 | 0.0 |
| Other Injuries/Illnesses | 249 | 10.4 | 559 | 9.9 | 386 | 9.5 | 4,267,524 | 10.2 | 17,191 | 9.4 |
| Nonclassifiable | 2 | 0.1 | 47 | 0.8 | 34 | 0.8 | 609,169 | 1.5 | 630 | 0.3 |
| EVENT OR EXPOSURE | 2,398 | 100.0% | 5,659 | 100.0% | 4,068 | 100.0% | \$41,747,435 | 100.0% | 183,950 | 100.0% |
| Struck Against | 196 | 8.2 | 342 | 6.0 | 240 | 5.9 | 1,144,344 | 2.7 | 4,497 | 2.4 |
| Struck By | 392 | 16.4 | 731 | 12.9 | 548 | 13.5 | 3,395,058 | 8.1 | 14,192 | 7.7 |
| Caught In, Under, or Between | 65 | 2.7 | 145 | 2.6 | 110 | 2.7 | 1,048,062 | 2.5 | 2,061 | 1.1 |
| Rubbed or Abraded | 42 | 1.8 | 68 | 1.2 | 42 | 1.0 | 64,174 | 0.2 | 518 | 0.3 |
| Other Contact with Object, Equipment | 35 | 1.5 | 70 | 1.2 | 49 | 1.2 | 172,495 | 0.4 | 890 | 0.5 |
| Falls (From Elevation) | 128 | 5.3 | 365 | 6.5 | 295 | 7.3 | 5,142,612 | 12.3 | 18,071 | 9.8 |
| Falls (To Same Level) | 279 | 11.6 | 691 | 12.2 | 516 | 12.7 | 5,777,322 | 13.8 | 31,223 | 17.0 |
| Falls (Other) | 7 | 0.3 | 30 | 0.5 | 25 | 0.6 | 399,594 | 1.0 | 1,594 | 0.9 |
| Bodily Reaction | 191 | 8.0 | 503 | 8.9 | 370 | 9.1 | 4,374,921 | 10.5 | 18,930 | 10.3 |
| Overexertion | 518 | 21.6 | 1,349 | 23.8 | 996 | 24.5 | 11,071,205 | 26.5 | 60,340 | 32.8 |
| Repetitive Motion | 37 | 1.5 | 120 | 2.1 | 83 | 2.0 | 1,011,066 | 2.4 | 5,063 | 2.8 |
| Heart Attacks and Strokes | 4 | 0.2 | 7 | 0.1 | 1 | 0.0 | 59,347 | 0.1 | 712 | 0.4 |
| Contact (Electrical) | 8 | 0.3 | 14 | 0.3 | 9 | 0.2 | 125,627 | 0.3 | 543 | 0.3 |
| Contact (Temperature Extremes) | 56 | 2.3 | 93 | 1.6 | 73 | 1.8 | 122,418 | 0.3 | 433 | 0.2 |
| Exposure (Noise) | 3 | 0.1 | 13 | 0.2 | 5 | 0.1 | 10,119 | 0.0 | 0 | 0.0 |
| Exposure (Harmful Substance) | 163 | 6.8 | 333 | 5.9 | 171 | 4.2 | 1,190,729 | 2.9 | 5,155 | 2.8 |
| Accidents (Highway Vehicle) | 64 | 2.7 | 192 | 3.4 | 151 | 3.7 | 2,027,622 | 4.9 | 5,765 | 3.1 |
| Accidents (Non-Highway Vehicle) | 21 | 0.9 | 65 | 1.2 | 50 | 1.2 | 512,971 | 1.2 | 1,961 | 1.1 |
| Accidents (Other Transportation) | 20 | 0.8 | 55 | 1.0 | 41 | 1.0 | 824,430 | 2.0 | 2,244 | 1.2 |
| Explosions | 6 | 0.3 | 11 | 0.2 | 10 | 0.3 | 310,725 | 0.7 | 915 | 0.5 |
| Assaults, Violent Acts | 135 | 5.6 | 314 | 5.6 | 189 | 4.7 | 1,659,754 | 4.0 | 6,395 | 3.5 |
| Other Events/Exposures | 15 | 0.6 | 39 | 0.7 | 25 | 0.6 | 213,159 | 0.5 | 571 | 0.3 |
| Nonclassifiable | 13 | 0.5 | 109 | 1.9 | 69 | 1.7 | 1,089,681 | 2.6 | 1,877 | 1.0 |

Notes: Cost and percent totals may not add due to rounding.

2015 HAWAII WORKERS' COMPENSATION STATISTICS

| KAUAI | REPORTED | | PROCESSED | | WITH COST | | COST | | DAYS LOST | |
|--------------------------------------|----------|--------|-----------|--------|-----------|--------|--------------|--------|-----------|--------|
| INDUSTRY | 1,367 | 100.0% | 2,614 | 100.0% | 1,796 | 100.0% | \$13,116,442 | 100.0% | 54,869 | 100.0% |
| Natural Resources & Mining | 24 | 1.8 | 63 | 2.4 | 47 | 2.6 | 456,390 | 3.5 | 1,435 | 2.6 |
| Construction | 68 | 5.0 | 139 | 5.3 | 104 | 5.8 | 988,296 | 7.5 | 3,416 | 6.2 |
| Manufacturing | 19 | 1.4 | 36 | 1.4 | 30 | 1.7 | 341,950 | 2.6 | 1,002 | 1.8 |
| Wholesale Trade | 18 | 1.3 | 35 | 1.3 | 30 | 1.7 | 243,785 | 1.9 | 817 | 1.5 |
| Retail Trade | 201 | 14.7 | 316 | 12.1 | 199 | 11.1 | 1,078,139 | 8.2 | 6,976 | 12.7 |
| Transportation & Warehousing | 35 | 2.6 | 79 | 3.0 | 60 | 3.3 | 615,064 | 4.7 | 1,565 | 2.9 |
| Utilities | 7 | 0.5 | 16 | 0.6 | 11 | 0.6 | 77,404 | 0.6 | 364 | 0.7 |
| Information | 7 | 0.5 | 17 | 0.7 | 9 | 0.5 | 11,221 | 0.1 | 2 | 0.0 |
| Financial Activities | 58 | 4.2 | 98 | 3.8 | 66 | 3.7 | 482,377 | 3.7 | 1,643 | 3.0 |
| Professional, Scientific, & Tech. | 27 | 2.0 | 33 | 1.3 | 27 | 1.5 | 166,816 | 1.3 | 1,064 | 1.9 |
| Management of Companies & Entrpr. | 10 | 0.7 | 15 | 0.6 | 12 | 0.7 | 85,890 | 0.7 | 27 | 0.1 |
| Administrative, Support, & Waste | 145 | 10.6 | 255 | 9.8 | 195 | 10.9 | 1,232,012 | 9.4 | 6,214 | 11.3 |
| Educational Services | 5 | 0.4 | 11 | 0.4 | 8 | 0.5 | 40,499 | 0.3 | 263 | 0.5 |
| Health Care & Social Assistance | 109 | 8.0 | 172 | 6.6 | 122 | 6.8 | 679,009 | 5.2 | 3,031 | 5.5 |
| Arts, Entertainment, & Recreation | 55 | 4.0 | 89 | 3.4 | 76 | 4.2 | 537,055 | 4.1 | 1,822 | 3.3 |
| Accommodation and Food Services | 334 | 24.4 | 512 | 19.6 | 373 | 20.8 | 2,947,490 | 22.5 | 8,956 | 16.3 |
| Other Services, except Public Admin. | 32 | 2.3 | 52 | 2.0 | 38 | 2.1 | 252,739 | 1.9 | 966 | 1.8 |
| Public Administration | 212 | 15.5 | 662 | 25.3 | 377 | 21.0 | 2,709,688 | 20.7 | 15,064 | 27.5 |
| Other | 1 | 0.1 | 14 | 0.5 | 12 | 0.7 | 170,618 | 1.3 | 242 | 0.4 |
| PART OF BODY | 1,367 | 100.0% | 2,614 | 100.0% | 1,796 | 100.0% | \$13,116,442 | 100.0% | 54,869 | 100.0% |
| Ears | 6 | 0.4 | 10 | 0.4 | 5 | 0.3 | 2,716 | 0.0 | 3 | 0.0 |
| Face, Excluding Eyes, Ears | 38 | 2.8 | 63 | 2.4 | 41 | 2.3 | 206,918 | 1.6 | 73 | 0.1 |
| Eyes | 59 | 4.3 | 88 | 3.4 | 65 | 3.6 | 109,472 | 0.8 | 405 | 0.7 |
| Head, Excluding Ears, Face, Eyes | 57 | 4.2 | 92 | 3.5 | 54 | 3.0 | 295,723 | 2.3 | 600 | 1.1 |
| Neck | 19 | 1.4 | 31 | 1.2 | 24 | 1.3 | 310,834 | 2.4 | 645 | 1.2 |
| Trunk, Excluding Back | 146 | 10.7 | 294 | 11.3 | 216 | 12.0 | 2,295,812 | 17.5 | 8,991 | 16.4 |
| Back (Spine/Spinal Cord) | 163 | 11.9 | 347 | 13.3 | 268 | 14.9 | 2,188,661 | 16.7 | 10,591 | 19.3 |
| Arms | 70 | 5.1 | 140 | 5.4 | 103 | 5.7 | 491,179 | 3.7 | 1,287 | 2.4 |
| Wrists | 28 | 2.1 | 67 | 2.6 | 46 | 2.6 | 356,979 | 2.7 | 1,835 | 3.3 |
| Hands, Excluding Fingers | 75 | 5.5 | 113 | 4.3 | 78 | 4.3 | 356,416 | 2.7 | 1,691 | 3.1 |
| Fingers | 174 | 12.7 | 298 | 11.4 | 202 | 11.3 | 596,881 | 4.6 | 2,163 | 3.9 |
| Upper Extremities, Multiple | 31 | 2.3 | 44 | 1.7 | 33 | 1.8 | 174,496 | 1.3 | 1,103 | 2.0 |
| Legs | 143 | 10.5 | 291 | 11.1 | 206 | 11.5 | 1,686,085 | 12.9 | 9,085 | 16.6 |
| Ankles | 51 | 3.7 | 89 | 3.4 | 68 | 3.8 | 59,770 | 0.5 | 1,376 | 2.5 |
| Feet, Excluding Toes | 38 | 2.8 | 77 | 3.0 | 48 | 2.7 | 249,317 | 1.9 | 972 | 1.8 |
| Toes | 21 | 1.5 | 31 | 1.2 | 17 | 1.0 | 30,725 | 0.2 | 209 | 0.4 |
| Lower Extremities, Multiple | 17 | 1.2 | 31 | 1.2 | 22 | 1.2 | 63,084 | 0.5 | 170 | 0.3 |
| Body Systems | 73 | 5.3 | 172 | 6.6 | 63 | 3.5 | 807,500 | 6.2 | 4,321 | 7.9 |
| Multiple Body Parts | 158 | 11.6 | 334 | 12.8 | 235 | 13.1 | 2,808,362 | 21.4 | 9,349 | 17.0 |
| Nonclassifiable | 0 | 0.0 | 2 | 0.1 | 2 | 0.1 | 25,512 | 0.2 | 0 | 0.0 |
| SOURCE OF INJURY OR ILLNESS | 1,367 | 100.0% | 2,614 | 100.0% | 1,796 | 100.0% | \$13,116,442 | 100.0% | 54,869 | 100.0% |
| Chemical, Chemical Product | 41 | 3.0 | 57 | 2.2 | 39 | 2.2 | 47,745 | 0.4 | 98 | 0.2 |
| Containers | 164 | 12.0 | 322 | 12.3 | 246 | 13.7 | 2,004,078 | 15.3 | 5,776 | 10.5 |
| Furniture, Fixtures | 83 | 6.1 | 160 | 6.1 | 111 | 6.2 | 770,232 | 5.9 | 3,798 | 6.9 |
| Machinery | 90 | 6.6 | 156 | 6.0 | 114 | 6.4 | 870,617 | 6.6 | 1,655 | 3.0 |
| Building Materials | 36 | 2.6 | 65 | 2.5 | 42 | 2.3 | 413,899 | 3.2 | 2,013 | 3.7 |
| Vehicle, Mobile Equipment Parts | 11 | 0.8 | 18 | 0.7 | 17 | 1.0 | 69,454 | 0.5 | 278 | 0.5 |
| Other Parts and Materials | 26 | 1.9 | 56 | 2.1 | 44 | 2.5 | 166,224 | 1.3 | 772 | 1.4 |
| Plants, Animals, Minerals | 83 | 6.1 | 145 | 5.6 | 92 | 5.1 | 419,384 | 3.2 | 1,714 | 3.1 |
| Person, Injured Worker | 194 | 14.2 | 388 | 14.8 | 237 | 13.2 | 2,172,329 | 16.6 | 10,682 | 19.5 |
| Person, Other than Injured Worker | 90 | 6.6 | 154 | 5.9 | 100 | 5.6 | 591,721 | 4.5 | 4,780 | 8.7 |
| Floors, Walkways, Ground | 170 | 12.4 | 379 | 14.5 | 264 | 14.7 | 2,626,722 | 20.0 | 10,018 | 18.3 |
| Structures, Other Surfaces | 54 | 4.0 | 88 | 3.4 | 55 | 3.1 | 313,144 | 2.4 | 735 | 1.3 |
| Handtools (Nonpowered) | 93 | 6.8 | 135 | 5.2 | 94 | 5.2 | 292,379 | 2.2 | 1,496 | 2.7 |
| Handtools (Powered) | 9 | 0.7 | 40 | 1.5 | 30 | 1.7 | 209,381 | 1.6 | 1,271 | 2.3 |
| Other Tools, Instruments, Equipment | 42 | 3.1 | 94 | 3.6 | 70 | 3.9 | 280,662 | 2.1 | 2,086 | 3.8 |
| Highway Vehicle, Motorized | 54 | 4.0 | 99 | 3.8 | 72 | 4.0 | 670,849 | 5.1 | 2,509 | 4.6 |
| Nonpowered Plant Vehicles | 28 | 2.0 | 54 | 2.1 | 38 | 2.1 | 267,168 | 2.0 | 745 | 1.4 |
| Other Vehicles | 32 | 2.3 | 58 | 2.2 | 43 | 2.4 | 460,019 | 3.5 | 1,592 | 2.9 |
| Scrap, Waste, Debris | 30 | 2.2 | 54 | 2.1 | 36 | 2.0 | 175,685 | 1.3 | 607 | 1.1 |
| Other Sources | 37 | 2.7 | 92 | 3.5 | 52 | 2.9 | 294,750 | 2.3 | 2,244 | 4.1 |

Note: Cost and percent totals may not add due to rounding.

2015 HAWAI'I WORKERS' COMPENSATION STATISTICS

| KAUAI | REPORTED | | PROCESSED | | WITH COST | | COST | | DAYS LOST | |
|--------------------------------------|----------|--------|-----------|--------|-----------|--------|--------------|--------|-----------|--------|
| OCCUPATION | 1,367 | 100.0% | 2,614 | 100.0% | 1,796 | 100.0% | \$13,116,442 | 100.0% | 54,869 | 100.0% |
| Executive, Admin. & Managerial | 48 | 3.5 | 94 | 3.6 | 67 | 3.7 | 414,910 | 3.2 | 1,035 | 1.9 |
| Professional Specialty | 84 | 6.1 | 202 | 7.7 | 99 | 5.5 | 606,003 | 4.6 | 2,491 | 4.5 |
| Technical Support | 18 | 1.3 | 41 | 1.6 | 27 | 1.5 | 192,586 | 1.5 | 820 | 1.5 |
| Sales | 112 | 8.2 | 184 | 7.0 | 105 | 5.9 | 787,388 | 6.0 | 4,659 | 8.5 |
| Administrative Support | 75 | 5.5 | 177 | 6.8 | 99 | 5.5 | 717,029 | 5.5 | 2,466 | 4.5 |
| Services | 496 | 36.3 | 882 | 33.7 | 619 | 34.5 | 4,052,640 | 30.9 | 19,642 | 35.8 |
| Agricultural, Forestry & Fishing | 125 | 9.1 | 238 | 9.1 | 193 | 10.8 | 1,112,639 | 8.5 | 4,265 | 7.8 |
| Mechanic, Repairer | 88 | 6.4 | 187 | 7.2 | 145 | 8.1 | 1,208,868 | 9.2 | 5,566 | 10.1 |
| Construction Trades | 72 | 5.3 | 134 | 5.1 | 95 | 5.3 | 1,474,451 | 11.2 | 2,815 | 5.1 |
| Precision Production | 23 | 1.7 | 35 | 1.3 | 24 | 1.3 | 171,811 | 1.3 | 798 | 1.5 |
| Operator, Fabricator, Inspector | 8 | 0.6 | 17 | 0.7 | 8 | 0.5 | 24,395 | 0.2 | 2 | 0.0 |
| Transportation, Material Moving | 67 | 4.9 | 118 | 4.5 | 98 | 5.5 | 983,958 | 7.5 | 3,490 | 6.4 |
| Handler, Helper, Laborer | 139 | 10.2 | 279 | 10.7 | 202 | 11.3 | 1,307,674 | 10.0 | 5,917 | 10.8 |
| Nonclassifiable | 12 | 0.9 | 26 | 1.0 | 15 | 0.8 | 62,090 | 0.5 | 903 | 1.7 |
| NATURE OF INJURY OR ILLNESS | 1,367 | 100.0% | 2,614 | 100.0% | 1,796 | 100.0% | \$13,116,442 | 100.0% | 54,869 | 100.0% |
| Traumatic Injuries | 91 | 6.7 | 217 | 8.3 | 160 | 8.9 | 1,692,677 | 12.9 | 7,688 | 14.0 |
| Fracture | 49 | 3.6 | 115 | 4.4 | 90 | 5.0 | 801,180 | 6.1 | 3,924 | 7.2 |
| Sprains, Strains | 361 | 26.4 | 694 | 26.6 | 519 | 28.9 | 3,592,244 | 27.4 | 18,655 | 34.0 |
| Cut, Laceration | 174 | 12.7 | 285 | 10.9 | 212 | 11.8 | 583,152 | 4.5 | 1,713 | 3.1 |
| Puncture, Excluding Bites | 32 | 2.3 | 54 | 2.1 | 39 | 2.2 | 34,921 | 0.3 | 30 | 0.1 |
| Abrasions, Scratches | 18 | 1.3 | 34 | 1.3 | 21 | 1.2 | 54,547 | 0.4 | 40 | 0.1 |
| Bruises, Contusions | 139 | 10.2 | 240 | 9.2 | 147 | 8.2 | 1,468,166 | 11.2 | 3,198 | 5.8 |
| Foreign Bodies | 23 | 1.7 | 32 | 1.2 | 24 | 1.3 | 14,857 | 0.1 | 11 | 0.0 |
| Heat Burns | 30 | 2.2 | 50 | 1.9 | 32 | 1.8 | 158,431 | 1.2 | 297 | 0.5 |
| Multiple Injuries/Disorders | 44 | 3.2 | 86 | 3.3 | 64 | 3.6 | 532,492 | 4.1 | 864 | 1.6 |
| Back Pain | 37 | 2.7 | 78 | 3.0 | 60 | 3.3 | 502,537 | 3.8 | 1,881 | 3.4 |
| Pain, Excluding Back | 126 | 9.2 | 245 | 9.4 | 175 | 9.7 | 1,709,245 | 13.0 | 6,469 | 11.8 |
| Carpal Tunnel | 1 | 0.1 | 4 | 0.2 | 1 | 0.1 | 4,807 | 0.0 | 4 | 0.0 |
| Musculoskeletal | 3 | 0.2 | 20 | 0.8 | 14 | 0.8 | 147,356 | 1.1 | 657 | 1.2 |
| Skin Disorders | 12 | 0.9 | 17 | 0.7 | 7 | 0.4 | 2,720 | 0.0 | 8 | 0.0 |
| Symptoms | 30 | 2.2 | 52 | 2.0 | 23 | 1.3 | 173,232 | 1.3 | 514 | 0.9 |
| Mental Disorders | 46 | 3.4 | 112 | 4.3 | 34 | 1.9 | 567,051 | 4.3 | 3,823 | 7.0 |
| Exposure | 2 | 0.2 | 5 | 0.2 | 2 | 0.1 | 224 | 0.0 | 0 | 0.0 |
| Other Injuries/Illnesses | 149 | 10.9 | 269 | 10.3 | 167 | 9.3 | 1,006,854 | 7.7 | 4,258 | 7.8 |
| Nonclassifiable | 0 | 0.0 | 5 | 0.2 | 5 | 0.3 | 69,749 | 0.5 | 835 | 1.5 |
| EVENT OR EXPOSURE | 1,367 | 100.0% | 2,614 | 100.0% | 1,796 | 100.0% | \$13,116,442 | 100.0% | 54,869 | 100.0% |
| Struck Against | 119 | 8.7 | 189 | 7.2 | 124 | 6.9 | 498,877 | 3.8 | 2,459 | 4.5 |
| Struck By | 187 | 13.7 | 341 | 13.1 | 240 | 13.4 | 1,165,785 | 8.9 | 4,092 | 7.5 |
| Caught In, Under, or Between | 47 | 3.4 | 80 | 3.1 | 50 | 2.8 | 188,236 | 1.4 | 1,186 | 2.2 |
| Rubbed or Abraded | 25 | 1.8 | 35 | 1.3 | 24 | 1.3 | 17,613 | 0.1 | 12 | 0.0 |
| Other Contact with Object, Equipment | 31 | 2.3 | 52 | 2.0 | 40 | 2.2 | 36,046 | 0.3 | 205 | 0.4 |
| Falls (From Elevation) | 48 | 3.5 | 119 | 4.6 | 87 | 4.8 | 974,437 | 7.4 | 4,541 | 8.3 |
| Falls (To Same Level) | 166 | 12.1 | 336 | 12.9 | 239 | 13.3 | 2,559,624 | 19.5 | 7,090 | 12.9 |
| Falls (Other) | 2 | 0.2 | 9 | 0.3 | 7 | 0.4 | 121,405 | 0.9 | 1 | 0.0 |
| Bodily Reaction | 131 | 9.6 | 228 | 8.7 | 170 | 9.5 | 1,316,450 | 10.0 | 7,164 | 13.1 |
| Overexertion | 303 | 22.2 | 593 | 22.7 | 456 | 25.4 | 3,430,249 | 26.2 | 16,249 | 29.6 |
| Repetitive Motion | 12 | 0.9 | 39 | 1.5 | 25 | 1.4 | 324,436 | 2.5 | 861 | 1.6 |
| Heart Attacks and Strokes | 3 | 0.2 | 6 | 0.2 | 0 | 0.0 | 0 | 0.0 | 0 | 0.0 |
| Contact (Electrical) | 0 | 0.0 | 7 | 0.3 | 4 | 0.2 | 6,422 | 0.1 | 0 | 0.0 |
| Contact (Temperature Extremes) | 30 | 2.2 | 49 | 1.9 | 32 | 1.8 | 159,020 | 1.2 | 297 | 0.5 |
| Exposure (Noise) | 2 | 0.2 | 2 | 0.1 | 1 | 0.1 | 348 | 0.0 | 0 | 0.0 |
| Exposure (Harmful Substance) | 125 | 9.1 | 235 | 9.0 | 121 | 6.7 | 543,704 | 4.2 | 3,084 | 5.6 |
| Accidents (Highway Vehicle) | 19 | 1.4 | 38 | 1.5 | 29 | 1.6 | 347,233 | 2.7 | 1,183 | 2.2 |
| Accidents (Non-Highway Vehicle) | 9 | 0.7 | 28 | 1.1 | 22 | 1.2 | 438,917 | 3.4 | 807 | 1.5 |
| Accidents (Other Transportation) | 10 | 0.7 | 27 | 1.0 | 18 | 1.0 | 292,479 | 2.2 | 1,247 | 2.3 |
| Explosions | 7 | 0.5 | 9 | 0.3 | 7 | 0.4 | 15,940 | 0.1 | 17 | 0.0 |
| Assaults, Violent Acts | 65 | 4.8 | 123 | 4.7 | 70 | 3.9 | 434,504 | 3.3 | 2,803 | 5.1 |
| Other Events/Exposures | 10 | 0.7 | 24 | 0.9 | 13 | 0.7 | 50,798 | 0.4 | 1 | 0.0 |
| Nonclassifiable | 16 | 1.2 | 45 | 1.7 | 17 | 1.0 | 193,919 | 1.5 | 1,570 | 2.9 |

Note: Cost and percent totals may not add due to rounding.

2015 HAWAI'I REPORTED FATALITIES

| | STATE 27 | % of TOTAL 100.0% | O'AHU 16 | HAWAI'I COUNTY 5 | MAUI COUNTY 3 | KAUAI 3 |
|--|-------------|-------------------------|-------------|------------------------|---------------------|------------|
| SEX | | | | | | |
| Male | 21 | 77.8 | 12 | 4 | 2 | 3 |
| Female | 6 | 22.2 | 4 | 1 | 1 | 0 |
| MARITAL STATUS | | | | | | |
| Married | 11 | 40.7 | 7 | 1 | 2 | 1 |
| Single | 16 | 59.3 | 9 | 4 | 1 | 2 |
| AGE | | | | | | |
| 18-24 | 1 | 3.7 | 0 | 0 | 0 | 1 |
| 25-34 | 3 | 11.1 | 2 | 1 | 0 | 0 |
| 35-44 | 5 | 18.5 | 2 | 1 | 1 | 1 |
| 45-54 | 4 | 14.8 | 3 | 1 | 0 | 0 |
| 55-64 | 13 | 48.1 | 8 | 2 | 2 | 1 |
| Over 64 | 1 | 3.7 | 1 | 0 | 0 | 0 |
| INDUSTRY | | | | | | |
| Natural Resources | 2 | 7.4 | 0 | 0 | 1 | 1 |
| Construction | 5 | 18.5 | 1 | 3 | 1 | 0 |
| Wholesale Trade | 1 | 3.7 | 1 | 0 | 0 | 0 |
| Retail Trade | 3 | 11.1 | 2 | 1 | 0 | 0 |
| Transportation & Warehousing | 2 | 7.4 | 1 | 0 | 1 | 0 |
| Utilities | 1 | 3.7 | 1 | 0 | 0 | 0 |
| Professional, Scientific & Tech | 1 | 3.7 | 0 | 1 | 0 | 0 |
| Administrative, Support, & Waste Management | 1 | 3.7 | 1 | 0 | 0 | 0 |
| Educational Services | 1 | 3.7 | 1 | 0 | 0 | 0 |
| Arts, Entertainment, and Recreation | 3 | 11.1 | 3 | 0 | 0 | 0 |
| Accommodation and Food Services | 3 | 11.1 | 3 | 0 | 0 | 0 |
| Other Services, except Public Administration | 1 | 3.7 | 1 | 0 | 0 | 0 |
| Public Administration | 3 | 11.1 | 1 | 0 | 0 | 2 |
| OCCUPATION | | | | | | |
| Executive, Administrative, & Managerial | 4 | 14.8 | 3 | 0 | 1 | 0 |
| Professional Specialty | 1 | 3.7 | 0 | 1 | 0 | 0 |
| Technical Support | 1 | 3.7 | 0 | 1 | 0 | 0 |
| Sales | 1 | 3.7 | 1 | 0 | 0 | 0 |
| Protective Service | 1 | 3.7 | 1 | 0 | 0 | 0 |
| Services | 4 | 14.8 | 4 | 0 | 0 | 0 |
| Agricultural, Forestry & Fishing | 1 | 3.7 | 1 | 0 | 0 | 0 |
| Mechanic, Repairer | 2 | 7.4 | 1 | 0 | 1 | 0 |
| Construction Trades/Extractive | 4 | 14.8 | 0 | 3 | 1 | 0 |
| Machine Operator, Assembler, inspector | 2 | 7.4 | 1 | 0 | 0 | 1 |
| Transportation, Material Moving | 3 | 11.1 | 3 | 0 | 0 | 0 |
| Handler, Helper, Laborer | 3 | 11.1 | 1 | 0 | 0 | 2 |
| CAUSE | | | | | | |
| Falls | 2 | 7.4 | 1 | 1 | 0 | 0 |
| Heart Attacks and Strokes | 20 | 74.1 | 14 | 3 | 3 | 0 |
| Exposure (Harmful Substance) | 2 | 7.4 | 0 | 1 | 0 | 1 |
| Transportation Accidents | 2 | 7.4 | 1 | 0 | 0 | 1 |
| Assault or Violent Acts | 1 | 3.7 | 0 | 0 | 0 | 1 |

Note: Percentages may not add due to rounding.

2015 HEARINGS AND DECISIONS ISSUED

| | STATE | O'AHU | EAST HAWAI'I | WEST HAWAI'I | MAUI | KAUA'I |
|-------------------------|-------|-------|-----------------|-----------------|-------|--------|
| HEARINGS | 2,166 | 1,320 | 236 | 92 | 261 | 257* |
| DECISIONS ISSUED | 8,587 | 5,870 | 673 | 465 | 1,152 | 427* |
| Act 59 Settlement | 550 | 332 | 47 | 39 | 106 | 26 |
| Attorney Fees | 1,461 | 1,092 | 119 | 37 | 158 | 55 |
| Denial | 232 | 124 | 11 | 15 | 53 | 29 |
| Disfigurement | 550 | 308 | 63 | 55 | 61 | 63 |
| Fatality | 16 | 9 | 1 | 0 | 3 | 3 |
| Medical | 971 | 517 | 109 | 36 | 260 | 49 |
| Permanent Partial | 1,907 | 1,367 | 91 | 123 | 249 | 77 |
| Permanent Total | 11 | 7 | 2 | 0 | 2 | 0 |
| Temporary Partial | 4 | 3 | 0 | 0 | 0 | 1 |
| Temporary Total | 266 | 167 | 21 | 21 | 31 | 26 |
| Benefit Adjustments | 3 | 2 | 1 | 0 | 0 | 0 |
| Other | 2,616 | 1,942 | 208 | 139 | 229 | 98 |

* Includes O'ahu cases conducted by the Kaua'i hearings officer remotely via the webcam.

WORKERS' COMPENSATION MAXIMUM WEEKLY WAGE BASE AND MAXIMUM WEEKLY BENEFIT AMOUNT HISTORY

| Year | Maximum Weekly Wage Base | Maximum Weekly Benefit Amount | Year | Maximum Weekly Wage Base | Maximum Weekly Benefit Amount |
|------|--------------------------------|-------------------------------------|------|--------------------------------|-------------------------------------|
| 1980 | \$322.50 | \$215.00 | 1998 | \$761.96 | \$508.00 |
| 1981 | \$352.50 | \$235.00 | 1999 | \$778.46 | \$519.00 |
| 1982 | \$378.00 | \$252.00 | 2000 | \$793.46 | \$529.00 |
| 1983 | \$399.00 | \$266.00 | 2001 | \$820.46 | \$547.00 |
| 1984 | \$421.50 | \$281.00 | 2002 | \$845.96 | \$564.00 |
| 1985 | \$436.50 | \$291.00 | 2003 | \$869.96 | \$580.00 |
| 1986 | \$448.50 | \$299.00 | 2004 | \$893.96 | \$596.00 |
| 1987 | \$477.00 | \$318.00 | 2005 | \$932.95 | \$622.00 |
| 1988 | \$501.00 | \$334.00 | 2006 | \$980.95 | \$654.00 |
| 1989 | \$537.00 | \$358.00 | 2007 | \$1,016.95 | \$678.00 |
| 1990 | \$574.47 | \$383.00 | 2008 | \$1,043.95 | \$696.00 |
| 1991 | \$617.97 | \$412.00 | 2009 | \$1,087.45 | \$725.00 |
| 1992 | \$655.47 | \$437.00 | 2010 | \$1,117.44 | \$745.00 |
| 1993 | \$689.97 | \$460.00 | 2011 | \$1,096.45 | \$731.00 |
| 1994 | \$721.46 | \$481.00 | 2012 | \$1,120.44 | \$747.00 |
| 1995 | \$736.46 | \$491.00 | 2013 | \$1,142.94 | \$762.00 |
| 1996 | \$743.96 | \$496.00 | 2014 | \$1,165.44 | \$777.00 |
| 1997 | \$751.46 | \$501.00 | 2015 | \$1,178.94 | \$786.00 |

2015 DIGEST OF THE WORKERS' COMPENSATION LAW

| | |
|---|--|
| Purpose | To provide medical, rehabilitation, income, and indemnity benefits to workers suffering work-connected injuries, or in the event of death, income and indemnity benefits to their dependents. |
| Coverage | <p>All workers except:</p> <ul style="list-style-type: none"> Federal government workers. Workers for nonprofit organizations if in voluntary or unpaid capacity. Students working for a school, college, or university in return for board, lodging, or tuition. Ordained members of the church. Certain domestic workers. Certain 25% stockholders of a corporation. Owners with 50% or more of a corporation. Real estate salespersons or brokers paid solely by commission. Certain 50% distributional interest members of a limited liability company. Certain 50% partners of a limited liability partnership. Partners of a partnership. Sole Proprietors. |
| Eligibility Requirements for Benefits | Employee suffering personal injury by accident arising out of and in the course of employment, or by disease proximately caused by or resulting from the nature of the employment. |
| Disqualification from Benefits | <p>Injury incurred by willful self-infliction or to another by actively engaging in any unprovoked non-work related physical altercation other than in self-defense or by intoxication.</p> <p>Mental stress claims resulting solely from disciplinary action taken in good faith by employer.</p> |
| Waiting Period | Three days. |
| Weekly Benefits | 66-2/3% of the worker's average weekly wages for permanent total, permanent partial, and temporary total disabilities. 66-2/3% of difference of average weekly wages before and weekly earnings after injury for temporary partial disability. |
| Benefit Provisions - 2015 | <p>Minimum weekly benefits - \$197.00</p> <p>Maximum weekly benefits - \$786.00</p> <p>Maximum weekly amount used to compute weekly benefits for surviving spouse - \$1,178.94</p> <p>Funeral expenses - \$7,860.00</p> <p>Burial expenses - \$3,930.00</p> |
| Duration | <p>Medical - as reasonably needed or as the nature or injury requires.</p> <p>Death - various duration for beneficiaries.</p> <p>Temporary total disability - duration of the disability.</p> <p>Permanent total disability - for life.</p> |
| Appeal Provisions | Within 20 days after a decision has been sent to parties concerned. |
| Statute of Limitation for Filing a Claim | Within two years after date of injury in which the effects have manifest and within five years after date of accident or occurrence of injury. |
| Employer's Penalties and Fines | <p>\$250 or \$10 for each employee each day for failure to give security for compensation.</p> <p>Up to \$5,000 for refusing or neglecting to give required notice or to make required reports.</p> <p>20% of unpaid compensation for default in payment.</p> |
| Method of Insuring | Through insurance carriers or approved employer self-financing. |
| Financing | Cost of insurance paid by employer. |
| Funds | <p>Special Compensation Fund</p> <p>Income: Fines and penalties. Death benefits where there are no dependents. Special assessments.</p> <p>Outgo: To pay benefits to injured employee whose injury occurred prior to 1973 and where the employer or carrier has paid the maximum aggregate, for concurrent employment benefits and for preexisting condition benefits. To reimburse employees/employers effective January 1, 1992 and January 1 of every tenth year thereafter, for the cost of supplemental allowance for permanent total disability payments to employees injured before January 1, 1992 and January 1 of every tenth year thereafter. To injured employee or dependents where employer is in default in payment of compensation. For litigation expense incurred by or on behalf of the Special Compensation Fund.</p> <p>Solvency: When cash balance falls below an amount determined by the Director to be insufficient to meet the fund's current and projected obligation, a levy based on a percentage of gross premiums and a special charge against self-insured until cash balance equals or exceeds an amount determined by the director to be sufficient to meet the fund's current and projected obligations.</p> |

DEFINITIONS

| | |
|---|---|
| Attendant Services | Cost of services of an attendant for a totally disabled employee. |
| Average Cost Per Case | Total compensation costs divided by the number of processed cases with cost. |
| Compensation Orders | Decisions made on controverted cases, on awarding of permanent partial disability and disfigurement, and on reopening cases. |
| Costs | All payments accorded to a claimant to include disability, death, disfigurement, vocational rehabilitation, attendant services, and medical payments. |
| Days Lost | Number of compensated (calendar) days in which injured workers were not able to work because of temporary total disability. This excludes the three-day waiting period. |
| Disfigurement | Scar, deformity, discoloration, or other disfiguring consequences resulting from the injury or caused by medical, surgical, and hospital treatment of the employee. This is separate from permanent partial disability. |
| Employment | That portion of the work force covered by Workers' Compensation law. Annual average taken from the "Employment and Payrolls in Hawai'i" report excluding federal government employees. |
| Event or Exposure | Identifies the circumstance, which directly resulted in the injury or illness. |
| Industry | Identifies employers by the major type of activity in which they are engaged. |
| Medical | Physicians and hospital costs and costs for services and supplies. |
| Nature of Injury or Illness | Identifies the injury or illness in terms of its principal physical characteristic. |
| Occupation | Identifies the nature of work of the employee. |
| Part of Body | Identifies the part of the worker's body directly affected by the injury or illness. |
| Permanent Partial Disability | Injury or illness which results in the complete loss or loss of any member or part of the body or any permanent impairment of functions of the body or part thereof, regardless of any pre-existing disability. |
| Permanent Total Disability | Any injury or illness other than death, which permanently and totally incapacitates an employee from following any gainful occupation. |
| Processed Cases | Reported injuries or illnesses during the report year and all prior years on the Disability Compensation Information System database for which an action has occurred during the report year. Actions on a case includes having been subject to a screening procedure having the injury or illness medically evaluated, and/or medical costs and/or workers' compensation payments occurred. For example a case initially reported on a WC-1 in 1990, where payments were made in 2014, would be counted as a 2014 processed case and a case reported in 2014 with or without payments will be counted as a 2014 reported case and 2014 processed case. |
| Reported Injuries and Illnesses (Reported Cases) | All injuries and illnesses reported to the Disability Compensation Division. These reported injuries or illnesses may not have occurred during the report year, due to the change in close date (See Technical Notes, #5) to process a reported case. |
| Reported Fatalities | Any death resulting from an on-the-job injury or illness reported to the Disability Compensation Division. |
| Source of Injury or Illness | Identifies the object, substance, exposure, or bodily motion, which directly produced or inflicted the injury or illness. |
| Temporary Partial Disability | A work injury or illness which causes partial rather than total disability for temporary periods. The injured worker is paid a weekly benefit amount of 66-2/3 percent of the difference between his average weekly wages before the injury and his weekly earnings thereafter for the duration of the disability. |
| Temporary Total Disability | A common type of disability where the work injury or illness causes total disability for temporary periods. The employer or insurance carrier, for the duration of the disability, but not including the first three days, pays the injured worker a weekly benefit amount of 66-2/3 percent of his average weekly wages, but not more than the maximum weekly benefit amount nor less than the minimum weekly benefit amount, or if his average weekly wages are less than the minimum weekly benefit amount, at a rate of 100 percent of his average weekly wages. |
| Vocational Rehabilitation | Cost of vocational rehabilitation services. |

TECHNICAL NOTES

The Workers' Compensation Data Book is based on the annual accumulation of data in the State of Hawai'i, Disability Compensation database.

1. The following coding systems and locally revised versions were used to categorize data:
 - a) Industrial attachment is determined by the principal activity of the employer as defined in the **North American Industry Classification System 2002 (NAICS)**. The new NAICS industry groupings better reflect the workings of the U.S. economy, particularly in the services sector. NAICS, developed using a production oriented conceptual framework, groups establishments into industries based on the activity in which they are primarily engaged. It is not an update of the Standard Industrial Classification (SIC) system. NAICS focuses on how products and services are created. More information on NAICS is available at the U.S. Census Bureau website at <http://www.census.gov/epcd/www/naics.html>.
 - b) Codes and definitions used to categorize Nature of Injury or Illness, Part of Body Affected, Source of Injury or Illness, and Event or Exposure were modeled after the **1992 Bureau of Labor Statistics (BLS) Occupational Injury and Illness Classification Structures (OIICS)**. Starting with 1996 data, BLS OIICS data codes were locally modified to 2 digits instead of 4 digits, making the data less detailed.
 - c) Occupational groups are based on the **1990 Alphabetical Index of Industries and Occupations**, developed and published by the Bureau of the Census, Washington, D.C., U.S. Government Printing Office. Starting with 1996 data, the occupation classifications were locally modified, making the data less detailed.
2. From 1999, the employment data source used in the **Worker's Compensation Data Book** has been changed. Instead of the **Labor Force Data Book** employment we are using the **Employment and Payrolls in Hawai'i** statistics. Employment data from the later publication may be more in line with workers covered under the Workers' Compensation program. Caution should be taken when reviewing the employment and frequency data for trend analysis prior to 1999.
3. From 2000, the table Hearings and Decisions Issued (previously called Compensation Orders Issued and Number of Hearings) has changed to include Act 59 settlements and attorney fees. The combined category Permanent Partial & Disfigurement no longer exists. Figures are reported under the category with the highest severity. For example: a case with disability payments and disfigurement award would be counted in the disability category and not in disfigurement.
4. Beginning with the **2002 Workers' Compensation Data Book**, there is a new format for the Industry category. The North American Industry Classification System (NAICS) is being used to designate the different industries instead of the Standard Industrial Classification (SIC) system. For trend analysis purposes, the data may not be comparable.
5. Effective with the **2004 Workers' Compensation Data Book**, the close date to process a "reported case" for the preceding calendar year was changed from January 31 to December 31 to accommodate the filing of electronic "WC-1 Employers Report of Industrial Injury". For trend analysis purposes, the data for 2004 may not be comparable.
6. From 2014, Financial Activities in the Industry group replaced Finance, Insurance, Real Estate, Rent & Leasing; Finance, Ins, Real Estate, Rent, & Leasing; and Fin, Ins, Real Est, Rent, & Leasing.

STATE OF HAWAII
DEPARTMENT OF LABOR AND INDUSTRIAL RELATIONS
RESEARCH AND STATISTICS OFFICE
830 PUNCHBOWL STREET, ROOM 304
HONOLULU, HAWAII 96813