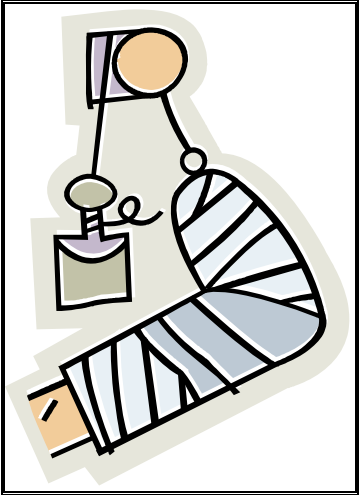
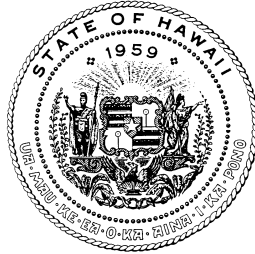




WORKERS' COMPENSATION DATA BOOK 2010



STATE OF HAWAII
DEPARTMENT OF LABOR AND INDUSTRIAL RELATIONS
RESEARCH AND STATISTICS OFFICE



State of Hawaii
Neil Abercrombie, Governor

Department of Labor and Industrial Relations

Dwight Takamine, Director
Audrey Hidano, Deputy Director

Research and Statistics Office

Francisco Corpuz, Chief

Operations Management Information

Elienne Yoshida, Supervisor

Prepared by:

Siriporn Rolseth
Geraldne Lacno

Disability Compensation Division

Walter Kawamura, Administrator

WORKERS' COMPENSATION DATA BOOK 2010

INTRODUCTION

The WORKERS' COMPENSATION DATA BOOK presents a summary of information on injuries and illnesses reported to the Disability Compensation Division of the State of Hawaii Department of Labor and Industrial Relations.

This publication includes work injury and illness case, cost and days lost information by island, industry, occupation, sex, part of body, average weekly wage, source of injury or illness, marital status, event or exposure, nature of injury or illness and age.

Publications from 2000 are available on the Internet at <http://hawaii.gov/labor/rs/>.



Please direct inquiries or comments to:

State of Hawaii
Department of Labor & Industrial Relations
Research and Statistics Office
Operations Management Information Staff
830 Punchbowl St., Room 304
Honolulu, HI 96813

Data contained in this report – 586-9014
Copies of this report – 586-8999
E-mail: dlir.research@hawaii.gov

TABLE OF CONTENTS

Highlights 2010.....	3
2010 Hawaii Reported Injuries and Illnesses.....	4
2010 Reported Injuries and Illnesses: Frequency by Industry.....	5
2010 Hawaii Processed Cases and Cost.....	6
Average Cost by Part of Body.....	6
Back Cases: Cost and Days Lost by Nature of Injury and Illness.....	7
2010 Hawaii Workers' Compensation Statistics	
Reported Cases:	
Part of Body Affected by Nature of Injury or Illness.....	8
Event or Exposure by Source of Injury or Illness.....	8
Reported & Processed Cases, Cost, Days Lost:	
State.....	9
Oahu.....	12
Maui County.....	14
Hawaii County.....	16
Kauai County.....	18
2010 Hawaii Reported Fatalities.....	20
2010 Hearings and Decisions Issued.....	21
Maximum Weekly Wage Base and	
Maximum Weekly Benefit Amount History.....	21
2010 Digest of the Workers' Compensation Law.....	22
Definitions.....	23
Technical Notes.....	24

HIGHLIGHTS 2010

STATE OF HAWAII

REPORTED CASES: 20,654
PROCESSED CASES: 38,942
PROCESSED CASES WITH COST: 28,906
TOTAL COST: \$242,399,600
COST PER CASE: \$8,386
MEDICAL COST: \$102,743,381
DAYS LOST: 927,096
REPORTED FATALITIES: 27



Kauai County

Reported Cases: 1,357
Processed Cases: 2,400
Processed Cases with Cost: 1,781
Total Cost: \$13,812,038
Cost Per Case: \$7,755
Medical Cost: \$6,510,844
Days Lost: 48,876
Reported Fatality: 2



Maui County

Reported Cases: 2,896
Processed Cases: 5,433
Processed Cases with Cost: 4,062
Total Cost: \$32,327,994
Cost Per Case: \$7,959
Medical Cost: \$13,889,066
Days Lost: 117,526
Reported Fatality: 3

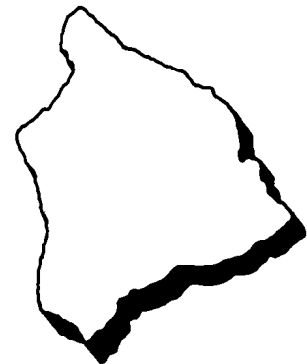


Hawaii County

Reported Cases: 2,477
Processed Cases: 5,459
Processed Cases with Cost: 4,031
Total Cost: \$36,955,788
Cost Per Case: \$9,168
Medical Cost: \$14,570,802
Days Lost: 164,640
Reported Fatality: 2

Oahu

Reported Cases: 13,924
Processed Cases: 25,650
Processed Cases with Cost: 19,032
Total Cost: \$159,303,779
Cost Per Case: \$8,370
Medical Cost: \$67,772,669
Days Lost: 596,054
Reported Fatality: 20



Note: Cost may not add due to rounding.

2010 HAWAII REPORTED INJURIES AND ILLNESSES

For three consecutive years, both reported cases and employment have decreased. In 2010, the number of reported cases was 20,654 and employment was 552,400 compared to 26,105 and 594,093, respectively, in 2007. From 2009 to 2010, reported cases fell by 4.0 percent or 866 cases and employment dropped by 1.2 percent or 6,465 workers.

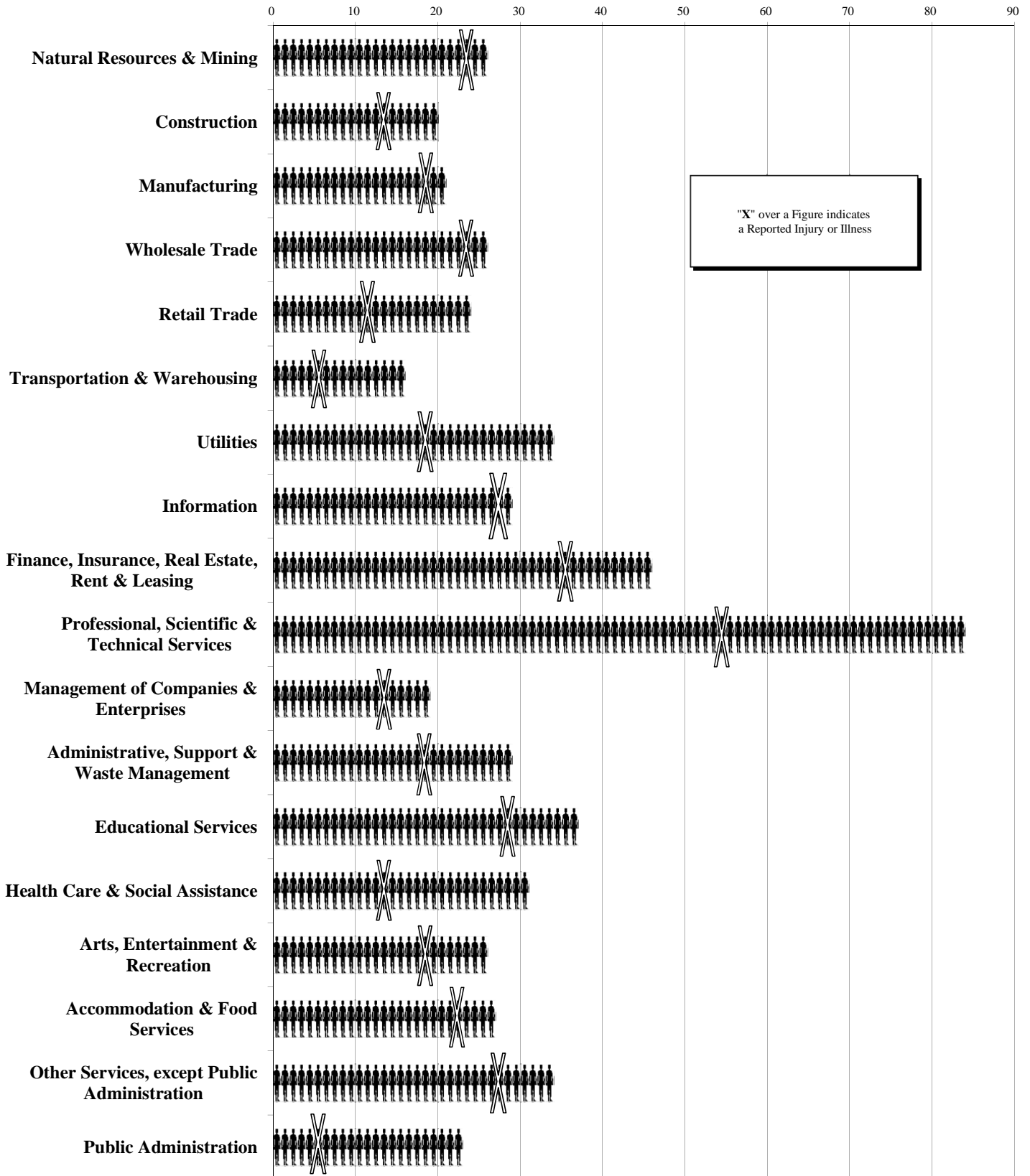
Five industries had employment increases over the year: utilities; information; administrative, support & waste management; educational services; and health care & social assistance. Three of these industries had decreases in reported cases. Employment for utilities increased 0.7 percent and cases declined 25.4 percent. Employment for administrative, support & waste management increased 2.1 percent and cases declined 10.5 percent. Employment for health care & social assistance increased 1.6 percent and cases declined 1.5 percent. The construction industry had the largest decrease in the number of workers and reported cases. Construction employment dropped 8.0 percent or 2,495 workers to 28,540. Reported cases decreased 18.5 percent or 323 cases to 1,425.

For the last six years, the industry with the lowest frequency of injured workers to employment was professional, scientific & technical services. In 2010, its frequency was one per 84 workers. Transportation & warehousing had the highest risk for injury and illness with a frequency of one in every 16 workers followed by management of companies & enterprises with one in 19 and construction with one in 20 workers.

Employment and Reported Cases by Industry for Hawaii

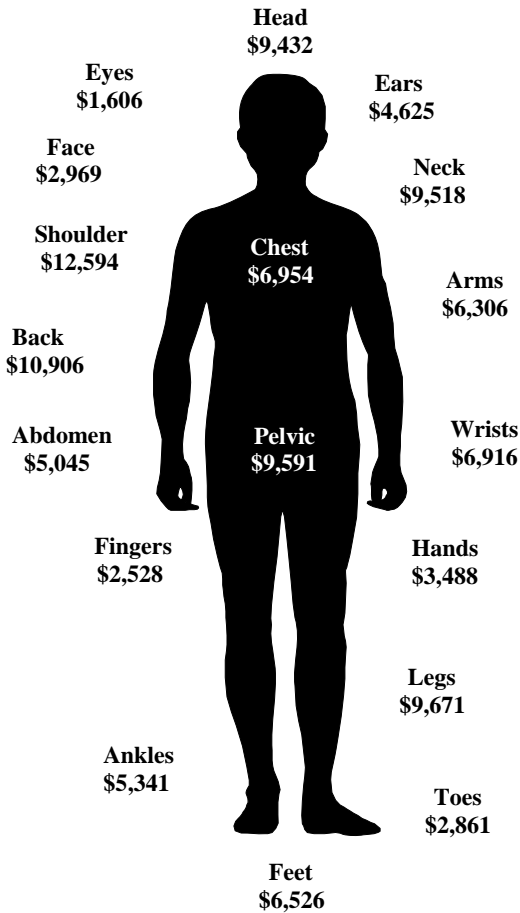
INDUSTRY	2009			2010		
	Employment	Reported Cases	Frequency	Employment	Reported Cases	Frequency
Total	558,865	21,520	1 in 26	552,400	20,654	1 in 27
Natural Resources & Mining	6,779	304	1 in 22	6,489	254	1 in 26
Construction	31,035	1,748	1 in 18	28,540	1,425	1 in 20
Manufacturing	13,699	602	1 in 23	12,935	614	1 in 21
Wholesale Trade	17,815	830	1 in 21	17,699	682	1 in 26
Retail Trade	66,497	2,603	1 in 26	65,921	2,704	1 in 24
Transportation & Warehousing	23,546	1,414	1 in 17	23,159	1,413	1 in 16
Utilities	3,190	126	1 in 25	3,213	94	1 in 34
Information	9,067	327	1 in 28	9,877	342	1 in 29
Finance, Insurance, Real Estate, Rent & Leasing	27,654	562	1 in 49	26,882	582	1 in 46
Professional, Scientific & Technical Services	24,643	368	1 in 67	24,160	286	1 in 84
Management of Companies & Enterprises	6,989	314	1 in 22	6,635	351	1 in 19
Administrative, Support & Waste Management	39,913	1,558	1 in 26	40,760	1,395	1 in 29
Educational Services	13,750	324	1 in 42	13,758	371	1 in 37
Health Care & Social Assistance	59,683	1,995	1 in 30	60,664	1,966	1 in 31
Arts, Entertainment & Recreation	10,698	408	1 in 26	10,363	405	1 in 26
Accommodations & Food Services	90,133	3,355	1 in 27	89,981	3,285	1 in 27
Other Services, except Public Administration	24,219	680	1 in 36	24,098	699	1 in 34
Public Administration	89,129	3,961	1 in 23	86,820	3,764	1 in 23
Information Not Available/Unclassified	426	41	1 in 10	446	22	1 in 20

2010 Reported Injuries and Illnesses: Frequency by Industry



2010 HAWAII PROCESSED CASES AND COST

2010 Average Cost by Part of Body



Over the year, total processed cases decreased by 2,137 or 5.2 percent to 38,942. Total workers' compensation cost fell almost \$2 million to \$242,399,600. Excluding a three day waiting period, total days lost increased by 16,608 or 1.8 percent from 910,488 to 927,096. The average cost of cases with cost increased from \$7,930 to \$8,386.

The 2010 data revealed that the average cost by part of body decreased for head, abdomen, pelvic, ankles, and toes. The highest average cost by part of body was the shoulder at \$12,594 followed by the back at \$10,906. The average costs for the shoulder and back increased from the previous year by 8.1 percent and 7.9 percent, respectively. The eyes had the lowest average cost at \$1,606.

Permanent total disability had the highest average cost per case at \$21,681. This was followed by permanent partial disability with an average cost of \$20,277. Disfigurement had the lowest average cost at \$508. Although the number of cases for temporary total disability, temporary partial disability, and medical declined, the costs for these payment types increased.

In 2010, medical cost comprised 42.4 percent of the total workers' compensation payments, compared to 40.4 percent in 2009. The average medical cost per case was \$3,830, an increase of 10.6 percent from 2009. The utilities industry had the largest average medical cost per case at \$8,362. Arts, entertainment, and recreation had the lowest average medical cost at \$2,769.

2010 HAWAII TYPE OF

INDUSTRY	TOTAL WORKERS' COMPENSATION COST	TEMPORARY TOTAL DISABILITY		TEMPORARY PARTIAL DISABILITY		PERMANENT TOTAL DISABILITY	
		Cases	Cost	Cases	Cost	Cases	Cost
	\$242,399,600	10,065	\$61,764,179	1,200	\$2,868,204	533	\$11,555,992
Natural Resources & Mining	\$4,146,326	144	\$836,499	18	\$89,219	13	\$289,001
Construction	\$32,830,664	871	\$10,233,395	67	\$180,030	48	\$1,294,841
Manufacturing	\$9,505,575	314	\$2,055,336	42	\$97,837	44	\$1,234,122
Wholesale Trade	\$9,611,723	378	\$2,487,737	34	\$56,580	4	\$86,969
Retail Trade	\$22,022,872	1,105	\$4,297,218	178	\$384,211	30	\$653,048
Transportation & Warehousing	\$20,275,326	876	\$5,187,273	197	\$516,969	18	\$418,528
Utilities	\$2,390,529	56	\$384,588	1	\$2,752	6	\$95,119
Information	\$6,520,614	138	\$1,343,620	8	\$63,079	13	\$309,898
Finance, Ins, Real Estate, Rent, & Leasing	\$5,660,462	228	\$1,077,289	33	\$87,542	8	\$196,803
Professional, Scientific, & Technical Svcs.	\$3,162,445	106	\$731,071	12	\$50,007	6	\$92,083
Management of Companies & Enterprises	\$2,634,193	119	\$513,295	10	\$14,405	9	\$247,100
Administrative, Support, & Waste Mgmt.	\$20,585,067	838	\$5,057,259	87	\$226,447	5	\$58,741
Educational Services	\$2,677,469	126	\$488,409	16	\$31,142	5	\$116,524
Health Care & Social Assistance	\$17,797,497	918	\$5,117,281	137	\$273,995	17	\$301,465
Arts, Entertainment, & Recreation	\$2,494,361	162	\$554,529	25	\$56,698	2	\$13,672
Accommodation and Food Services	\$22,945,907	1,402	\$5,036,942	160	\$328,594	29	\$527,598
Other Services, except Public Admin.	\$7,242,757	328	\$1,764,715	23	\$47,679	10	\$198,166
Public Administration	\$45,154,859	1,933	\$14,343,735	151	\$390,311	130	\$2,523,650
Other	\$4,740,954	23	\$253,988	1	(\$29,293)	136	\$2,898,664

Cost is rounded to the nearest whole dollar and may not add to total. Negative figures are due to adjustments from prior years.

Back Cases: Cost and Days Lost by Nature of Injury and Illness	2009				2010			
	Cases With Cost	Total Cost	Medical Cost	Days Lost	Cases With Cost	Total Cost	Medical Cost	Days Lost
Nature of Injury and Illness Total	5,426	\$54,840,594	\$22,277,321	211,700	5,274	\$57,516,026	\$25,501,867	218,612
Sprain, Strain	3,113	\$28,997,382	\$12,008,347	111,734	3,154	\$31,569,498	\$13,870,447	119,655
Back Pain	1,571	\$16,139,827	\$6,499,306	68,774	1,416	\$15,541,867	\$6,917,657	64,768
Traumatic Injury	351	\$4,341,301	\$2,206,401	18,225	363	\$5,447,293	\$2,880,523	21,353
Dislocation	52	\$697,393	\$316,367	2,935	42	\$858,348	\$350,015	3,895
Bruises, Contusions	100	\$789,971	\$269,218	3,525	103	\$824,364	\$370,828	3,082
Fracture	57	\$1,132,524	\$357,681	2,717	46	\$894,495	\$475,806	2,363
Multiple Traumatic Injuries/Disorders	17	\$138,717	\$64,237	275	10	\$131,097	\$16,744	166
Musculoskeletal System & Connective Tissue	35	\$457,717	142,759	2,684	29	\$491,605	\$187,175	1,772
Other Injuries and Illnesses	33	\$306,552	186,905	-155	33	\$469,542	\$315,006	1,158
Non-classifiable	97	\$1,839,211	226,100	986	78	\$1,287,917	\$117,667	400

Cost is rounded to the nearest whole dollar and may not add to total.

Negative figures are due to adjustments from prior years.

In 2010, for part of body affected, back cases with cost had the highest number of cases, days lost and cost. These cases comprised 18.2 percent of total cases with cost by part of body (table on page 10) at a cost of \$57.5 million and 218,612 days lost. Medical cost made up 44.3 percent of back costs for a 2010 total of \$25.5 million.

The number of back cases decreased in 2010 by 152 or 2.8 percent to 5,274. Although the number of cases declined, cost and days lost increased by 4.9 percent and 3.3 percent, respectively.

Sprain and strain continued to be the highest nature of injury category for back cases with 3,154 cases and 119,655 days lost. The total cost of these cases was \$31.6 million. Sprain and strain made up 54.9 percent of the total back injury cost in 2010 compared to 52.9 percent in 2009.

In 2010, the average back injury cost per case increased from \$10,107 to \$10,906. The nature of injury and illness for back with the highest average cost per case was dislocation at \$20,437, while the lowest average cost was bruises and contusions at \$8,004. All natures of injury and illness except sprain and strain, traumatic injury, and bruises and contusions showed decreases in the number of cases with cost from the previous year.

PAYMENTS BY INDUSTRY

PERMANENT PARTIAL DISABILITY		DEATH		DISFIGUREMENT		VOCATIONAL REHABILITATION		ATTENDANT SERVICES		MEDICAL		
Cases	Cost	Cases	Cost	Cases	Cost	Cases	Cost	Cases	Cost	Cases	Cost	Cost per Case
2,748	\$55,722,334	99	\$1,714,613	1,737	\$881,646	1,005	\$5,045,828	6	\$103,423	26,823	\$102,743,381	\$3,830
49	\$1,023,389	4	\$35,449	38	\$16,593	19	\$69,044	0	\$0	377	\$1,787,132	\$4,740
340	\$8,033,604	20	\$466,394	246	\$150,882	184	\$1,067,980	2	\$50,882	2,255	\$11,352,656	\$5,034
97	\$2,116,842	2	\$8,948	64	\$44,335	52	\$212,284	0	\$0	908	\$3,735,871	\$4,114
104	\$2,175,595	4	\$72,022	56	\$56,016	51	\$305,031	0	\$0	941	\$4,371,773	\$4,646
284	\$5,578,063	2	\$17,487	195	\$61,004	101	\$533,898	0	\$0	2,954	\$10,497,943	\$3,554
231	\$4,910,974	11	\$181,250	120	\$64,672	97	\$481,123	0	\$0	1,924	\$8,514,537	\$4,425
20	\$305,420	0	\$0	21	\$9,068	5	\$30,657	1	\$15,973	185	\$1,546,952	\$8,362
43	\$1,762,771	1	\$33,972	28	\$10,550	17	\$54,044	0	\$0	391	\$2,942,680	\$7,526
69	\$1,401,874	4	\$128,530	39	\$11,879	17	\$80,931	0	\$0	718	\$2,675,614	\$3,726
33	\$707,673	1	\$76,473	28	\$14,661	15	\$115,900	0	\$0	386	\$1,374,577	\$3,561
36	\$698,672	1	\$36,505	14	\$5,944	13	\$47,325	0	\$0	248	\$1,070,947	\$4,318
263	\$5,868,980	12	\$177,601	143	\$74,515	100	\$495,619	0	\$0	1,939	\$8,625,905	\$4,449
36	\$621,701	1	\$35,115	24	\$7,750	8	\$40,931	0	\$0	430	\$1,335,897	\$3,107
176	\$3,245,958	4	\$62,514	71	\$46,035	90	\$411,197	0	\$0	2,435	\$8,339,052	\$3,425
29	\$398,090	2	\$41,011	20	\$9,975	6	\$33,143	0	\$0	501	\$1,387,243	\$2,769
333	\$5,669,595	4	\$75,040	216	\$109,991	100	\$466,287	1	\$28,608	3,518	\$10,703,252	\$3,042
95	\$1,672,952	2	\$1,241	55	\$21,802	35	\$175,838	0	\$0	922	\$3,360,364	\$3,645
496	\$9,261,621	18	\$241,184	353	\$148,574	89	\$388,427	2	\$7,960	5,558	\$17,849,397	\$3,211
14	\$268,560	6	\$23,877	6	\$17,400	6	\$36,169	0	\$0	233	\$1,271,589	\$5,457

2010 HAWAII WORKERS' COMPENSATION STATISTICS

PART OF BODY AFFECTED BY NATURE OF INJURY OR ILLNESS

Reported Cases	Part of Body	Eyes	Head, Neck, Excl. Eyes	Trunk, Excl. Back	Back	Fingers	Upper Extremity, Excl. Fingers	Lower Extremity	Body System	Multiple Body Parts	Non-classifiable
Nature of Injury or Illness	20,654	844	1,672	2,040	3,202	2,767	3,173	4,014	822	2,021	99
Traumatic Injuries	1,864	80	205	185	191	186	231	426	0	335	25
Fracture	605	0	58	66	12	127	112	215	0	14	1
Sprains, Strains	5,771	0	181	876	2,062	119	607	1,526	0	395	5
Cut, Laceration	2,845	52	452	7	8	1,491	568	226	0	41	0
Puncture, Excluding Bites	551	3	15	6	2	264	147	111	0	2	1
Abrasions, Scratches	360	81	40	6	6	16	76	80	0	55	0
Bruises, Contusions	2,058	37	321	205	69	229	297	622	0	273	5
Foreign Bodies	367	342	3	0	0	17	5	0	0	0	0
Heat Burns	489	20	32	16	1	38	293	42	0	47	0
Multiple Injuries/Disorders	349	6	30	6	1	15	26	39	0	226	0
Back Pain	819	0	0	0	819	0	0	0	0	0	0
Pain, Excluding Back	1,905	16	101	445	0	113	420	541	0	268	1
Carpal Tunnel	82	0	0	0	0	0	82	0	0	0	0
Musculoskeletal	102	0	1	10	14	10	42	23	0	1	1
Skin Disorders	95	1	5	4	0	5	48	6	0	22	4
Symptoms	309	3	19	8	0	1	2	1	268	7	0
Mental Disorders	320	0	0	0	0	0	0	0	320	0	0
Exposure	149	24	17	1	0	1	12	1	82	7	4
Other Injuries/Illnesses	1,532	177	186	197	13	133	201	145	147	324	9
Nonclassifiable	82	2	6	2	4	2	4	10	5	4	43

EVENT OR EXPOSURE BY SOURCE OF INJURY OR ILLNESS

Reported Cases	Event or Exposure	Struck By or Struck Against	Caught In, Under, or Between	Rubbed or Abraded	Fall	Bodily Reaction	Overexertion	Contact With Temp. Extremes	Exposure (Harmful Substance)	Highway Motor Vehicle Accidents	Other
Source of Injury or Illness	20,654	5,272	529	500	3,426	1,727	4,728	477	1,249	441	2,305
Chemical, Chemical Product	391	3	0	5	0	0	0	18	361	0	4
Containers	2,751	629	60	38	53	0	1,889	46	0	0	36
Furniture, Fixtures	1,087	522	55	6	101	0	385	5	2	0	11
Machinery	1,185	534	136	7	34	0	320	72	8	0	74
Building Materials	453	260	25	7	11	0	141	4	1	0	4
Vehicle, Mobile Eqmt Parts	190	61	10	2	3	0	98	1	0	0	15
Other Parts and Materials	503	326	23	11	5	0	107	5	2	0	24
Plants, Animals, Minerals	976	199	9	13	49	0	83	163	256	0	204
Person, Injured Worker	2,521	5	0	1	2	1,727	54	0	260	0	472
Person, Other	1,358	89	6	0	9	0	507	0	84	0	663
Floors, Walkways, Ground	3,018	89	3	6	2,910	0	4	0	0	0	6
Structures, Other Surfaces	714	435	57	4	101	0	101	2	0	0	14
Handtools (Nonpowered)	1,244	976	16	16	3	0	212	3	1	0	17
Handtools (Powered)	261	140	10	3	3	0	84	9	5	0	7
Other Tools, Instruments, Equipment	729	287	27	6	19	0	225	5	130	0	30
Highway Vehicle, Motorized	970	235	44	3	38	0	85	1	1	435	128
Nonpowered Plant, Vehicles	398	160	21	1	15	0	198	0	0	0	3
Other Vehicles	307	73	17	0	12	0	29	0	0	6	170
Scrap, Waste, Debris	596	163	0	358	0	0	17	9	38	0	11
Other Sources	1,002	86	10	13	58	0	189	134	100	0	412

2010 HAWAII WORKERS' COMPENSATION STATISTICS

STATE	REPORTED		PROCESSED		WITH COST		COST		DAYS LOST	
ISLAND	20,654	100.0%	38,942	100.0%	28,906	100.0%	\$242,399,600	100.0%	927,096	100.0%
Oahu	13,924	67.4	25,650	65.9	19,032	65.8	159,303,779	65.7	596,054	64.3
East Hawaii	1,151	5.6	2,767	7.1	1,992	6.9	15,688,762	6.5	76,092	8.2
West Hawaii	1,326	6.4	2,692	6.9	2,039	7.1	21,267,027	8.8	88,548	9.6
Maui	2,740	13.3	5,125	13.2	3,841	13.3	30,878,177	12.7	110,868	12.0
Molokai	73	0.4	160	0.4	117	0.4	611,853	0.3	3,061	0.3
Lanai	83	0.4	148	0.4	104	0.4	837,964	0.3	3,597	0.4
Kauai	1,357	6.6	2,400	6.2	1,781	6.2	13,812,038	5.7	48,876	5.3
INDUSTRY	20,654	100.0%	38,942	100.0%	28,906	100.0%	\$242,399,600	100.0%	927,096	100.0%
Natural Resources & Mining	254	1.2	553	1.4	415	1.4	4,146,326	1.7	15,558	1.7
Construction	1,425	6.9	2,961	7.6	2,462	8.5	32,830,664	13.5	120,361	13.0
Manufacturing	614	3.0	1,175	3.0	982	3.4	9,505,575	3.9	29,845	3.2
Wholesale Trade	682	3.3	1,244	3.2	1,001	3.5	9,611,723	4.0	42,564	4.6
Retail Trade	2,704	13.1	4,372	11.2	3,129	10.8	22,022,872	9.1	85,204	9.2
Transportation & Warehousing	1,413	6.8	2,767	7.1	2,090	7.2	20,275,326	8.4	79,175	8.5
Utilities	94	0.5	315	0.8	206	0.7	2,390,529	1.0	3,926	0.4
Information	342	1.7	582	1.5	415	1.4	6,520,614	2.7	15,053	1.6
Fin, Ins, Real Est, Rent, & Leasing	582	2.8	1,009	2.6	756	2.6	5,660,462	2.3	18,819	2.0
Professional, Scientific, & Tech.	286	1.4	512	1.3	405	1.4	3,162,445	1.3	10,672	1.2
Management of Companies & Entrpr.	351	1.7	497	1.3	278	1.0	2,634,193	1.1	7,761	0.8
Administrative, Support, & Waste	1,395	6.8	2,601	6.7	2,080	7.2	20,585,067	8.5	88,033	9.5
Educational Services	371	1.8	599	1.5	457	1.6	2,677,469	1.1	9,571	1.0
Health Care & Social Assistance	1,966	9.5	3,365	8.6	2,561	8.9	17,797,497	7.3	79,516	8.6
Arts, Entertainment, & Recreation	405	2.0	673	1.7	528	1.8	2,494,361	1.0	11,614	1.3
Accommodation and Food Services	3,285	15.9	5,162	13.3	3,755	13.0	22,945,907	9.5	94,480	10.2
Other Services, except Public Admin.	699	3.4	1,250	3.2	980	3.4	7,242,757	3.0	29,548	3.2
Public Administration	3,764	18.2	8,916	22.9	6,067	21.0	45,154,859	18.6	181,558	19.6
Other	22	0.1	389	1.0	339	1.2	4,740,954	2.0	3,838	0.4
TYPE OF INSURANCE	20,654	100.0%	38,942	100.0%	28,906	100.0%	\$242,399,600	100.0%	927,096	100.0%
Carrier	13,997	67.8	24,585	63.1	18,591	64.3	152,695,051	63.0	610,709	65.9
Self-Insured: Private & Captive	2,949	14.3	5,594	14.4	4,437	15.4	36,083,442	14.9	137,310	14.8
Self-Insured: Government	3,708	18.0	8,763	22.5	5,878	20.3	42,340,873	17.5	179,077	19.3
State of Hawaii	1,856	9.0	4,908	12.6	3,139	10.9	20,042,401	8.3	104,372	11.3
City & County of Honolulu	1,353	6.6	2,664	6.8	1,867	6.5	16,373,888	6.8	50,555	5.5
Hawaii County	135	0.7	499	1.3	303	1.0	2,178,412	0.9	9,294	1.0
Maui County	258	1.3	470	1.2	401	1.4	2,702,068	1.1	10,786	1.2
Kauai County	106	0.5	222	0.6	168	0.6	1,044,104	0.4	4,070	0.4
Special Compensation Fund	INA	--	INA	--	INA	--	11,280,234	4.7	INA	--
OCCUPATION	20,654	100.0%	38,942	100.0%	28,906	100.0%	\$242,399,600	100.0%	927,096	100.0%
Executive, Admin. & Managerial	619	3.0	1,362	3.5	994	3.4	8,858,492	3.7	24,064	2.6
Professional Specialty	1,747	8.5	3,330	8.6	2,349	8.1	15,381,359	6.3	46,441	5.0
Technical Support	540	2.6	897	2.3	686	2.4	4,794,557	2.0	20,686	2.2
Sales	1,451	7.0	2,508	6.4	1,761	6.1	14,958,159	6.2	57,908	6.2
Administrative Support	1,324	6.4	2,790	7.2	1,875	6.5	12,323,961	5.1	49,552	5.3
Services	6,850	33.2	11,973	30.8	8,634	29.9	58,468,124	24.1	254,414	27.4
Agricultural, Forestry & Fishing	1,040	5.0	1,953	5.0	1,481	5.1	10,441,772	4.3	47,563	5.1
Mechanic, Repairer	1,216	5.9	2,322	6.0	1,787	6.2	16,193,639	6.7	48,537	5.2
Construction Trades	1,178	5.7	2,534	6.5	2,100	7.3	29,204,794	12.0	107,936	11.6
Precision Production	272	1.3	540	1.4	408	1.4	3,705,990	1.5	12,832	1.4
Operator, Fabricator, Inspector	317	1.5	633	1.6	511	1.8	5,327,465	2.2	21,801	2.4
Transportation, Material Moving	1,408	6.8	2,946	7.6	2,344	8.1	26,528,374	10.9	101,184	10.9
Handler, Helper, Laborer	2,609	12.6	4,748	12.2	3,662	12.7	31,500,105	13.0	130,937	14.1
Nonclassifiable	83	0.4	406	1.0	314	1.1	4,712,809	1.9	3,241	0.3
SEX	20,654	100.0%	38,942	100.0%	28,906	100.0%	\$242,399,600	100.0%	927,096	100.0%
Male	12,356	59.8	23,357	60.0	17,718	61.3	161,638,986	66.7	590,118	63.7
Female	8,298	40.2	15,585	40.0	11,188	38.7	80,760,614	33.3	336,978	36.3

Notes: Cost and percent totals may not add due to rounding.

2010 HAWAII WORKERS' COMPENSATION STATISTICS

STATE	REPORTED		PROCESSED		WITH COST		COST		DAYS LOST	
PART OF BODY	20,654	100.0%	38,942	100.0%	28,906	100.0%	\$242,399,600	100.0%	927,096	100.0%
Ears	78	0.4	166	0.4	94	0.3	434,718	0.2	597	0.1
Face, Excluding Eyes, Ears	621	3.0	952	2.4	697	2.4	2,069,345	0.9	6,016	0.7
Eyes	844	4.1	1,150	3.0	823	2.9	1,321,565	0.6	4,140	0.5
Head, Excluding Ears, Face, Eyes	685	3.3	1,187	3.1	860	3.0	8,111,605	3.4	17,586	1.9
Neck	288	1.4	611	1.6	481	1.7	4,577,957	1.9	15,228	1.6
Trunk, Excluding Back	2,040	9.9	4,220	10.8	3,191	11.0	35,194,627	14.5	143,670	15.5
<i>Shoulder</i>	<i>1,073</i>	<i>5.2</i>	<i>2,267</i>	<i>5.8</i>	<i>1,801</i>	<i>6.2</i>	<i>22,681,245</i>	<i>9.4</i>	<i>94,699</i>	<i>10.2</i>
<i>Chest</i>	<i>326</i>	<i>1.6</i>	<i>613</i>	<i>1.6</i>	<i>403</i>	<i>1.4</i>	<i>2,802,392</i>	<i>1.2</i>	<i>8,811</i>	<i>1.0</i>
<i>Abdomen</i>	<i>147</i>	<i>0.7</i>	<i>222</i>	<i>0.6</i>	<i>137</i>	<i>0.5</i>	<i>691,107</i>	<i>0.3</i>	<i>4,148</i>	<i>0.5</i>
<i>Pelvic Region</i>	<i>252</i>	<i>1.2</i>	<i>510</i>	<i>1.3</i>	<i>375</i>	<i>1.3</i>	<i>3,596,590</i>	<i>1.5</i>	<i>15,375</i>	<i>1.7</i>
<i>Trunk, Multiple/Unspecified</i>	<i>242</i>	<i>1.2</i>	<i>608</i>	<i>1.6</i>	<i>475</i>	<i>1.6</i>	<i>5,423,293</i>	<i>2.2</i>	<i>20,637</i>	<i>2.2</i>
Back (Spine/Spinal Cord)	3,202	15.5	6,703	17.2	5,274	18.3	57,516,026	23.7	218,612	23.6
Arms	1,137	5.5	1,926	5.0	1,408	4.9	8,879,328	3.7	38,693	4.2
Wrists	740	3.6	1,402	3.6	1,027	3.6	7,102,235	2.9	32,573	3.5
Hands, Excluding Fingers	1,038	5.0	1,594	4.1	1,168	4.0	4,073,692	1.7	15,400	1.7
Fingers	2,767	13.4	4,009	10.3	3,029	10.5	7,655,949	3.2	26,156	2.8
Upper Extremities, Multiple	258	1.3	561	1.4	394	1.4	3,196,882	1.3	14,365	1.6
Legs	2,090	10.1	4,335	11.1	3,295	11.4	31,867,289	13.2	131,445	14.2
Ankles	868	4.2	1,432	3.7	1,105	3.8	5,901,406	2.4	26,129	2.8
Feet, Excl. Toes	607	2.9	1,048	2.7	800	2.8	5,220,613	2.2	22,373	2.4
Toes	278	1.4	418	1.1	307	1.1	878,447	0.4	4,567	0.5
Lower Extremities, Multiple	171	0.8	367	0.9	288	1.0	2,329,962	1.0	9,757	1.1
Body Systems	822	4.0	1,616	4.2	683	2.4	7,408,220	3.1	30,361	3.3
Multiple Body Parts	2,021	9.8	4,949	12.7	3,775	13.1	45,724,428	18.9	164,092	17.7
Nonclassifiable	99	0.5	296	0.8	207	0.7	2,935,306	1.2	5,336	0.6
AVERAGE WEEKLY WAGE	20,654	100.0%	38,942	100.0%	28,906	100.0%	\$242,399,600	100.0%	927,096	100.0%
\$.01-\$200	755	3.7	1,390	3.6	1,041	3.6	6,268,629	2.6	20,020	2.2
\$200.01-\$400	2,712	13.1	4,919	12.6	3,652	12.6	25,182,750	10.4	104,699	11.3
\$400.01-\$600	3,436	16.6	6,496	16.7	4,898	16.9	37,686,776	15.6	165,637	17.9
\$600.01-\$800	3,575	17.3	6,888	17.7	5,122	17.7	42,407,828	17.5	186,165	20.1
\$800.01-\$1000	1,979	9.6	4,091	10.5	3,053	10.6	29,449,083	12.2	102,606	11.1
Over \$1000	3,010	14.6	5,721	14.7	4,232	14.6	44,637,958	18.4	134,731	14.5
Information Not Available	5,187	25.1	9,437	24.2	6,908	23.9	56,766,576	23.4	213,238	23.0
SOURCE OF INJURY OR ILLNESS	20,654	100.0%	38,942	100.0%	28,906	100.0%	\$242,399,600	100.0%	927,096	100.0%
Chemical, Chemical Product	391	1.9	623	1.6	389	1.3	1,162,198	0.5	4,328	0.5
Containers	2,751	13.3	5,262	13.5	4,027	13.9	35,984,131	14.8	144,086	15.5
Furniture, Fixtures	1,087	5.3	1,926	4.9	1,451	5.0	9,663,980	4.0	44,216	4.8
Machinery	1,185	5.7	2,109	5.4	1,624	5.6	13,306,265	5.5	51,514	5.6
Building Materials	453	2.2	904	2.3	721	2.5	6,835,935	2.8	25,708	2.8
Vehicle, Mobile Equipment Parts	190	0.9	352	0.9	281	1.0	2,325,859	1.0	7,638	0.8
Other Parts and Materials	503	2.4	890	2.3	688	2.4	5,668,953	2.3	16,209	1.7
Plants, Animals, Minerals	976	4.7	1,530	3.9	1,069	3.7	4,654,894	1.9	17,315	1.9
Person, Injured Worker	2,521	12.2	5,499	14.1	3,726	12.9	34,466,670	14.2	145,916	15.7
Person, Other than Injured Worker	1,358	6.6	2,542	6.5	1,802	6.2	13,679,621	5.6	60,998	6.6
Floors, Walkways, Ground	3,018	14.6	6,217	16.0	4,812	16.6	50,856,575	21.0	179,600	19.4
Structures, Other Surfaces	714	3.5	1,226	3.1	929	3.2	6,675,057	2.8	32,499	3.5
Handtools (Nonpowered)	1,244	6.0	1,822	4.7	1,396	4.8	5,397,778	2.2	21,693	2.3
Handtools (Powered)	261	1.3	452	1.2	366	1.3	2,579,777	1.1	8,839	1.0
Other Tools, Instruments, Equipment	729	3.5	1,252	3.2	930	3.2	5,731,544	2.4	22,318	2.4
Highway Vehicle, Motorized	970	4.7	2,143	5.5	1,674	5.8	18,727,223	7.7	62,389	6.7
Nonpowered Plant Vehicles	398	1.9	687	1.8	517	1.8	3,963,242	1.6	17,284	1.9
Other Vehicles	307	1.5	655	1.7	554	1.9	6,359,104	2.6	23,199	2.5
Scrap, Waste, Debris	596	2.9	813	2.1	594	2.1	1,375,826	0.6	3,413	0.4
Other Sources	1,002	4.9	2,038	5.2	1,356	4.7	12,984,968	5.4	37,934	4.1
MARITAL STATUS	20,654	100.0%	38,942	100.0%	28,906	100.0%	\$242,399,600	100.0%	927,096	100.0%
Married	9,751	47.2	19,339	49.7	14,481	50.1	127,975,605	52.8	460,923	49.7
Single	10,142	49.1	18,259	46.9	13,509	46.7	107,191,533	44.2	442,110	47.7
Information Not Available	761	3.7	1,344	3.5	916	3.2	7,232,462	3.0	24,063	2.6

Notes: Cost and percent totals may not add due to rounding.

2010 HAWAII WORKERS' COMPENSATION STATISTICS

STATE	REPORTED		PROCESSED		WITH COST		COST		DAYS LOST	
EVENT OR EXPOSURE	20,654	100.0%	38,942	100.0%	28,906	100.0%	\$242,399,600	100.0%	927,096	100.0%
Struck Against	1,874	9.1	2,742	7.0	2,032	7.0	7,153,579	3.0	26,581	2.9
Struck By	3,398	16.5	5,089	13.1	3,888	13.5	15,010,610	6.2	58,906	6.4
Caught In, Under, or Between	529	2.6	920	2.4	723	2.5	4,633,118	1.9	18,421	2.0
Rubbed or Abraded	500	2.4	628	1.6	443	1.5	777,642	0.3	2,005	0.2
Other Contact with Object, Equipment	171	0.8	356	0.9	258	0.9	1,544,466	0.6	5,927	0.6
Falls (From Elevation)	1,020	4.9	2,354	6.0	1,911	6.6	25,394,547	10.5	90,860	9.8
Falls (To Same Level)	2,369	11.5	4,550	11.7	3,448	11.9	30,681,891	12.7	107,605	11.6
Falls (Other)	37	0.2	139	0.4	103	0.4	1,530,282	0.6	6,541	0.7
Bodily Reaction	1,727	8.4	3,463	8.9	2,625	9.1	21,224,558	8.8	88,505	9.5
Overexertion	4,728	22.9	9,722	25.0	7,598	26.3	78,557,380	32.4	326,210	35.2
Repetitive Motion	358	1.7	1,048	2.7	678	2.3	7,768,207	3.2	34,513	3.7
Heart Attacks and Strokes	62	0.3	108	0.3	23	0.1	374,571	0.2	695	0.1
Contact (Electrical)	36	0.2	74	0.2	56	0.2	1,540,899	0.6	2,574	0.3
Contact (Temperature Extremes)	477	2.3	697	1.8	501	1.7	1,442,286	0.6	4,384	0.5
Exposure (Noise)	21	0.1	73	0.2	31	0.1	260,548	0.1	522	0.1
Exposure (Harmful Substance)	1,249	6.1	2,093	5.4	1,094	3.8	5,256,111	2.2	23,694	2.6
Accidents (Highway Vehicle)	441	2.1	1,153	3.0	904	3.1	11,698,021	4.8	36,621	4.0
Accidents (Non-Highway Vehicle)	171	0.8	379	1.0	304	1.1	4,093,359	1.7	14,499	1.6
Accidents (Other Transportation)	151	0.7	388	1.0	314	1.1	4,899,057	2.0	17,644	1.9
Explosions	38	0.2	53	0.1	46	0.2	356,738	0.1	1,424	0.2
Assaults, Violent Acts	846	4.1	1,699	4.4	1,158	4.0	8,228,530	3.4	36,332	3.9
Other Events/Exposures	78	0.4	274	0.7	194	0.7	2,239,126	0.9	3,537	0.4
Nonclassifiable	373	1.8	940	2.4	574	2.0	7,734,074	3.2	19,096	2.1
NATURE OF INJURY OR ILLNESS	20,654	100.0%	38,942	100.0%	28,906	100.0%	\$242,399,600	100.0%	927,096	100.0%
Traumatic Injuries	1,864	9.0	3,760	9.7	2,818	9.7	26,539,440	10.9	112,515	12.1
Fracture	605	2.9	1,545	4.0	1,290	4.5	17,914,791	7.4	63,234	6.8
Sprains, Strains	5,771	27.9	11,378	29.2	8,999	31.1	85,812,741	35.4	345,209	37.2
Cut, Laceration	2,845	13.8	4,026	10.3	3,108	10.8	7,794,449	3.2	24,048	2.6
Puncture, Excluding Bites	551	2.7	764	2.0	567	2.0	906,710	0.4	3,403	0.4
Abrasions, Scratches	360	1.7	539	1.4	380	1.3	1,208,192	0.5	4,355	0.5
Bruises, Contusions	2,058	10.0	3,111	8.0	2,253	7.8	12,552,332	5.2	48,359	5.2
Foreign Bodies	367	1.8	462	1.2	328	1.1	364,013	0.2	402	0.0
Heat Burns	489	2.4	712	1.8	517	1.8	1,665,674	0.7	4,318	0.5
Multiple Injuries/Disorders	349	1.7	1,032	2.7	790	2.7	9,259,368	3.8	29,188	3.1
Back Pain	819	4.0	1,845	4.7	1,416	4.9	15,541,867	6.4	64,768	7.0
Pain, Excluding Back	1,905	9.2	3,914	10.1	2,797	9.7	24,862,306	10.3	109,348	11.8
Carpal Tunnel	82	0.4	233	0.6	138	0.5	1,338,508	0.6	7,566	0.8
Musculoskeletal	102	0.5	287	0.7	204	0.7	2,029,787	0.8	9,577	1.0
Skin Disorders	95	0.5	182	0.5	117	0.4	282,197	0.1	1,225	0.1
Symptoms	309	1.5	468	1.2	184	0.6	788,713	0.3	2,983	0.3
Mental Disorders	320	1.5	835	2.1	313	1.1	4,405,467	1.8	24,895	2.7
Exposure	149	0.7	183	0.5	82	0.3	36,876	0.0	26	0.0
Other Injuries/Illnesses	1,532	7.4	3,226	8.3	2,258	7.8	23,670,256	9.8	69,134	7.5
Nonclassifiable	82	0.4	440	1.1	347	1.2	5,425,913	2.2	2,543	0.3
AGE	20,654	100.0%	38,942	100.0%	28,906	100.0%	\$242,399,600	100.0%	927,096	100.0%
Under 18	60	0.3	92	0.2	71	0.2	114,273	0.0	415	0.0
18-24	2,232	10.8	3,285	8.4	2,367	8.2	8,970,315	3.7	38,875	4.2
25-34	4,423	21.4	7,461	19.2	5,595	19.4	38,105,675	15.7	152,795	16.5
35-44	4,419	21.4	8,969	23.0	6,751	23.4	64,058,292	26.4	236,225	25.5
45-54	5,304	25.7	11,017	28.3	8,215	28.4	77,249,132	31.9	304,138	32.8
55-64	3,386	16.4	6,655	17.1	4,821	16.7	43,136,252	17.8	156,086	16.8
Over 64	772	3.7	1,298	3.3	985	3.4	8,943,717	3.7	31,529	3.4
Information Not Available	58	0.3	165	0.4	101	0.3	1,821,944	0.8	7,033	0.8

Notes: Cost and percent totals may not add due to rounding.

2010 HAWAII WORKERS' COMPENSATION STATISTICS

OAHU	REPORTED		PROCESSED		WITH COST		COST		DAYS LOST	
INDUSTRY	13,924	100.0%	25,650	100.0%	19,032	100.0%	\$159,303,779	100.0%	596,054	100.0%
Natural Resources & Mining	78	0.6	150	0.6	116	0.6	994,915	0.6	4,178	0.7
Construction	1,043	7.5	1,997	7.8	1,651	8.7	19,796,571	12.4	72,789	12.2
Manufacturing	495	3.6	920	3.6	763	4.0	7,077,901	4.4	22,398	3.8
Wholesale Trade	528	3.8	958	3.7	765	4.0	7,430,526	4.7	29,384	4.9
Retail Trade	1,805	13.0	2,826	11.0	2,000	10.5	13,830,949	8.7	54,221	9.1
Transportation & Warehousing	1,111	8.0	2,118	8.3	1,629	8.6	16,073,031	10.1	59,175	9.9
Utilities	53	0.4	184	0.7	129	0.7	1,918,112	1.2	2,746	0.5
Information	278	2.0	454	1.8	329	1.7	5,699,919	3.6	12,068	2.0
Fin, Ins, Real Est, Rent, & Leasing	379	2.7	676	2.6	490	2.6	3,570,777	2.2	12,442	2.1
Professional, Scientific, & Tech.	217	1.6	375	1.5	290	1.5	2,130,682	1.3	5,976	1.0
Management of Companies & Entrpr.	189	1.4	276	1.1	144	0.8	1,501,927	0.9	4,053	0.7
Administrative, Support, & Waste	887	6.4	1,618	6.3	1,280	6.7	11,781,335	7.4	49,978	8.4
Educational Services	297	2.1	450	1.8	335	1.8	1,938,340	1.2	7,487	1.3
Health Care & Social Assistance	1,477	10.6	2,478	9.7	1,922	10.1	13,481,449	8.5	60,236	10.1
Arts, Entertainment, & Recreation	263	1.9	417	1.6	317	1.7	1,523,117	1.0	5,589	0.9
Accommodation and Food Services	1,822	13.1	2,815	11.0	2,090	11.0	11,948,562	7.5	51,005	8.6
Other Services, except Public Admin.	483	3.5	861	3.4	670	3.5	4,929,733	3.1	20,834	3.5
Public Administration	2,499	17.9	5,812	22.7	3,885	20.4	30,244,023	19.0	118,836	19.9
Other	20	0.1	265	1.0	227	1.2	3,431,910	2.2	2,659	0.4
PART OF BODY	13,924	100.0%	25,650	100.0%	19,032	100.0%	\$159,303,779	100.0%	596,054	100.0%
Ears	48	0.3	106	0.4	57	0.3	351,707	0.2	517	0.1
Face, Excluding Eyes, Ears	435	3.1	649	2.5	470	2.5	1,504,783	0.9	4,759	0.8
Eyes	559	4.0	761	3.0	547	2.9	866,416	0.5	2,699	0.5
Head, Excluding Ears, Face, Eyes	493	3.5	809	3.2	582	3.1	5,881,164	3.7	10,597	1.8
Neck	184	1.3	377	1.5	311	1.6	3,058,301	1.9	11,846	2.0
Trunk, Excluding Back	1,336	9.6	2,714	10.6	2,037	10.7	23,165,892	14.5	90,840	15.2
Back (Spine/Spinal Cord)	2,090	15.0	4,310	16.8	3,406	17.9	36,715,467	23.0	138,590	23.3
Arms	798	5.7	1,291	5.0	943	5.0	6,062,363	3.8	27,090	4.5
Wrists	502	3.6	928	3.6	684	3.6	4,275,184	2.7	20,030	3.4
Hands, Excluding Fingers	699	5.0	1,045	4.1	775	4.1	2,770,602	1.7	10,612	1.8
Fingers	1,915	13.8	2,743	10.7	2,065	10.9	4,891,911	3.1	16,455	2.8
Upper Extremities, Multiple	189	1.4	397	1.5	281	1.5	2,095,268	1.3	9,905	1.7
Legs	1,415	10.2	2,865	11.2	2,156	11.3	21,230,190	13.3	84,716	14.2
Ankles	574	4.1	933	3.6	715	3.8	3,661,106	2.3	16,101	2.7
Feet, Excluding Toes	413	3.0	710	2.8	540	2.8	3,908,022	2.5	14,551	2.4
Toes	205	1.5	290	1.1	212	1.1	569,802	0.4	3,184	0.5
Lower Extremities, Multiple	121	0.9	259	1.0	206	1.1	1,467,541	0.9	6,188	1.0
Body Systems	520	3.7	999	3.9	421	2.2	4,674,997	2.9	16,807	2.8
Multiple Body Parts	1,357	9.7	3,249	12.7	2,482	13.0	30,309,931	19.0	106,746	17.9
Nonclassifiable	71	0.5	215	0.8	142	0.7	1,843,132	1.2	3,821	0.6
SOURCE OF INJURY OR ILLNESS	13,924	100.0%	25,650	100.0%	19,032	100.0%	\$159,303,779	100.0%	596,054	100.0%
Chemical, Chemical Product	247	1.8	384	1.5	238	1.3	717,274	0.5	2,659	0.4
Containers	1,806	13.0	3,424	13.3	2,640	13.9	23,347,864	14.7	96,119	16.1
Furniture, Fixtures	740	5.3	1,289	5.0	969	5.1	6,246,345	3.9	28,419	4.8
Machinery	771	5.5	1,351	5.3	1,043	5.5	7,569,748	4.8	30,625	5.1
Building Materials	327	2.3	622	2.4	497	2.6	4,621,448	2.9	17,134	2.9
Vehicle, Mobile Equipment Parts	124	0.9	230	0.9	182	1.0	1,526,941	1.0	4,321	0.7
Other Parts and Materials	345	2.5	585	2.3	450	2.4	3,761,833	2.4	10,358	1.7
Plants, Animals, Minerals	561	4.0	866	3.4	583	3.1	2,712,607	1.7	9,795	1.6
Person, Injured Worker	1,676	12.0	3,603	14.0	2,466	13.0	23,299,371	14.6	94,365	15.8
Person, Other than Injured Worker	991	7.1	1,771	6.9	1,246	6.5	9,289,817	5.8	43,341	7.3
Floors, Walkways, Ground	2,044	14.7	4,076	15.9	3,111	16.3	34,293,458	21.5	111,806	18.8
Structures, Other Surfaces	500	3.6	822	3.2	631	3.3	3,907,994	2.5	19,091	3.2
Handtools (Nonpowered)	807	5.8	1,171	4.6	905	4.8	3,525,903	2.2	13,686	2.3
Handtools (Powered)	179	1.3	300	1.2	245	1.3	1,743,703	1.1	5,151	0.9
Other Tools, Instruments, Equipment	534	3.8	885	3.5	669	3.5	4,598,027	2.9	18,452	3.1
Highway Vehicle, Motorized	706	5.1	1,485	5.8	1,165	6.1	12,853,638	8.1	41,193	6.9
Nonpowered Plant Vehicles	270	1.9	463	1.8	347	1.8	2,568,668	1.6	11,545	1.9
Other Vehicles	207	1.5	421	1.6	350	1.8	3,870,735	2.4	12,133	2.0
Scrap, Waste, Debris	415	3.0	543	2.1	399	2.1	845,806	0.5	2,591	0.4
Other Sources	674	4.8	1,359	5.3	896	4.7	8,002,599	5.0	23,270	3.9

Notes: Cost and percent totals may not add due to rounding.

2010 HAWAII WORKERS' COMPENSATION STATISTICS

OAHU	REPORTED		PROCESSED		WITH COST		COST		DAYS LOST	
	13,924	100.0%	25,650	100.0%	19,032	100.0%	\$159,303,779	100.0%	596,054	100.0%
OCCUPATION										
Executive, Admin. & Managerial	436	3.1	910	3.5	660	3.5	5,595,740	3.5	13,899	2.3
Professional Specialty	1,257	9.0	2,339	9.1	1,656	8.7	10,673,625	6.7	33,658	5.6
Technical Support	373	2.7	585	2.3	453	2.4	3,042,265	1.9	13,229	2.2
Sales	962	6.9	1,620	6.3	1,119	5.9	9,777,409	6.1	37,687	6.3
Administrative Support Services	921	6.6	1,910	7.4	1,265	6.6	8,603,582	5.4	35,414	5.9
Agricultural, Forestry & Fishing	4,510	32.4	7,774	30.3	5,587	29.4	38,596,553	24.2	168,528	28.3
Mechanic, Repairer	508	3.6	953	3.7	722	3.8	5,266,593	3.3	19,293	3.2
Construction Trades	798	5.7	1,529	6.0	1,195	6.3	11,212,101	7.0	30,836	5.2
Precision Production	860	6.2	1,713	6.7	1,412	7.4	18,438,334	11.6	66,133	11.1
Operator, Fabricator, Inspector	187	1.3	371	1.4	276	1.5	2,464,881	1.5	8,282	1.4
Transportation, Material Moving	215	1.5	429	1.7	346	1.8	3,304,554	2.1	14,430	2.4
Handler, Helper, Laborer	1,057	7.6	2,101	8.2	1,683	8.8	18,936,168	11.9	67,010	11.2
Nonclassifiable	1,797	12.9	3,156	12.3	2,446	12.9	20,251,049	12.7	85,566	14.4
	43	0.3	260	1.0	212	1.1	3,140,925	2.0	2,089	0.4
NATURE OF INJURY OR ILLNESS	13,924	100.0%	25,650	100.0%	19,032	100.0%	\$159,303,779	100.0%	596,054	100.0%
Traumatic Injuries	1,292	9.3	2,528	9.9	1,873	9.8	16,859,610	10.6	72,028	12.1
Fracture	409	2.9	975	3.8	801	4.2	10,672,571	6.7	36,728	6.2
Sprains, Strains	3,793	27.2	7,322	28.5	5,800	30.5	56,215,249	35.3	222,869	37.4
Cut, Laceration	1,952	14.0	2,702	10.5	2,102	11.0	5,053,369	3.2	15,360	2.6
Puncture, Excluding Bites	388	2.8	518	2.0	385	2.0	647,956	0.4	2,205	0.4
Abrasions, Scratches	248	1.8	363	1.4	247	1.3	833,052	0.5	2,812	0.5
Bruises, Contusions	1,380	9.9	2,065	8.1	1,506	7.9	8,397,989	5.3	31,295	5.3
Foreign Bodies	249	1.8	302	1.2	213	1.1	191,588	0.1	323	0.1
Heat Burns	330	2.4	478	1.9	350	1.8	1,082,062	0.7	2,659	0.4
Multiple Injuries/Disorders	250	1.8	662	2.6	493	2.6	5,213,313	3.3	17,823	3.0
Back Pain	582	4.2	1,256	4.9	961	5.1	10,279,595	6.5	42,385	7.1
Pain, Excluding Back	1,339	9.6	2,722	10.6	1,952	10.3	17,440,764	10.9	73,762	12.4
Carpal Tunnel	51	0.4	157	0.6	94	0.5	975,803	0.6	5,910	1.0
Musculoskeletal	73	0.5	213	0.8	153	0.8	1,548,422	1.0	6,842	1.2
Skin Disorders	59	0.4	106	0.4	64	0.3	200,700	0.1	973	0.2
Symptoms	200	1.4	297	1.2	115	0.6	544,460	0.3	2,331	0.4
Mental Disorders	190	1.4	495	1.9	185	1.0	2,564,611	1.6	13,005	2.2
Exposure	128	0.9	147	0.6	58	0.3	22,967	0.0	9	0.0
Other Injuries/Illnesses	956	6.9	2,034	7.9	1,433	7.5	16,876,771	10.6	45,256	7.6
Nonclassifiable	55	0.4	308	1.2	247	1.3	3,682,927	2.3	1,479	0.2
EVENT OR EXPOSURE	13,924	100.0%	25,650	100.0%	19,032	100.0%	\$159,303,779	100.0%	596,054	100.0%
Struck Against	1,271	9.1	1,828	7.1	1,373	7.2	4,822,782	3.0	17,475	2.9
Struck By	2,338	16.8	3,395	13.2	2,611	13.7	9,883,229	6.2	42,375	7.1
Caught In, Under, or Between	360	2.6	613	2.4	480	2.5	2,697,695	1.7	10,479	1.8
Rubbed or Abraded	340	2.4	415	1.6	295	1.6	503,850	0.3	1,467	0.2
Other Contact with Object, Equip.	116	0.8	248	1.0	182	1.0	1,198,499	0.8	4,386	0.7
Falls (From Elevation)	689	4.9	1,534	6.0	1,232	6.5	16,454,405	10.3	54,124	9.1
Falls (To Same Level)	1,620	11.6	3,024	11.8	2,262	11.9	21,300,011	13.4	71,381	12.0
Falls (Other)	25	0.2	101	0.4	76	0.4	1,344,596	0.8	5,379	0.9
Bodily Reaction	1,161	8.3	2,302	9.0	1,741	9.1	14,366,128	9.0	56,760	9.5
Overexertion	3,081	22.1	6,281	24.5	4,920	25.9	50,738,126	31.8	209,192	35.1
Repetitive Motion	250	1.8	717	2.8	468	2.5	5,472,133	3.4	24,067	4.0
Heart Attacks and Strokes	39	0.3	66	0.3	12	0.1	254,887	0.2	129	0.0
Contact (Electrical)	24	0.2	49	0.2	38	0.2	1,062,215	0.7	1,913	0.3
Contact (Temperature Extremes)	328	2.4	474	1.8	345	1.8	927,376	0.6	2,924	0.5
Exposure (Noise)	13	0.1	53	0.2	23	0.1	252,045	0.2	519	0.1
Exposure (Harmful Substance)	803	5.8	1,298	5.1	667	3.5	3,166,358	2.0	14,178	2.4
Accidents (Highway Vehicle)	332	2.4	806	3.1	639	3.4	8,127,798	5.1	26,336	4.4
Accidents (Non-Highway Vehicle)	106	0.8	210	0.8	162	0.9	1,934,885	1.2	5,438	0.9
Accidents (Other Transportation)	111	0.8	278	1.1	217	1.1	3,358,898	2.1	11,326	1.9
Explosions	24	0.2	32	0.1	28	0.1	137,451	0.1	243	0.0
Assaults, Violent Acts	606	4.4	1,152	4.5	775	4.1	4,989,326	3.1	21,482	3.6
Other Events/Exposures	47	0.3	176	0.7	121	0.6	1,578,322	1.0	2,687	0.5
Nonclassifiable	240	1.7	598	2.3	365	1.9	4,732,764	3.0	11,794	2.0

Notes: Cost and percent totals may not add due to rounding.

2010 HAWAII WORKERS' COMPENSATION STATISTICS

MAUI	REPORTED		PROCESSED		WITH COST		COST		DAYS LOST	
INDUSTRY	2,896	100.0%	5,433	100.0%	4,062	100.0%	\$32,327,994	100.0%	117,526	100.0%
Natural Resources & Mining	58	2.0	159	2.9	119	2.9	1,284,900	4.0	2,750	2.3
Construction	133	4.6	354	6.5	293	7.2	4,634,724	14.3	17,107	14.6
Manufacturing	41	1.4	82	1.5	69	1.7	653,230	2.0	1,891	1.6
Wholesale Trade	55	1.9	94	1.7	78	1.9	565,535	1.7	2,818	2.4
Retail Trade	313	10.8	555	10.2	426	10.5	3,537,666	10.9	12,187	10.4
Transportation & Warehousing	139	4.8	270	5.0	188	4.6	1,675,879	5.2	6,205	5.3
Utilities	10	0.3	70	1.3	33	0.8	245,501	0.8	525	0.4
Information	15	0.5	31	0.6	19	0.5	225,450	0.7	790	0.7
Fin, Ins, Real Est, Rent, & Leasing	103	3.6	161	3.0	127	3.1	1,066,364	3.3	3,238	2.8
Professional, Scientific, & Tech.	15	0.5	40	0.7	31	0.8	296,310	0.9	1,183	1.0
Management of Companies & Entrpr.	58	2.0	73	1.3	38	0.9	434,775	1.3	1,364	1.2
Administrative, Support, & Waste	240	8.3	436	8.0	353	8.7	3,105,766	9.6	13,654	11.6
Educational Services	26	0.9	56	1.0	45	1.1	306,044	0.9	818	0.7
Health Care & Social Assistance	168	5.8	298	5.5	216	5.3	1,201,837	3.7	4,276	3.6
Arts, Entertainment, & Recreation	55	1.9	110	2.0	95	2.3	399,278	1.2	2,191	1.9
Accommodation and Food Services	803	27.7	1,260	23.2	883	21.7	5,129,391	15.9	19,293	16.4
Other Services, except Public Admin.	104	3.6	181	3.3	142	3.5	1,435,455	4.4	5,728	4.9
Public Administration	559	19.3	1,149	21.1	858	21.1	5,290,107	16.4	20,680	17.6
Other	1	0.0	54	1.0	49	1.2	839,782	2.6	828	0.7
PART OF BODY	2,896	100.0%	5,433	100.0%	4,062	100.0%	\$32,327,994	100.0%	117,526	100.0%
Ears	17	0.6	30	0.6	17	0.4	19,886	0.1	42	0.0
Face, Excluding Eyes, Ears	89	3.1	148	2.7	111	2.7	307,240	1.0	491	0.4
Eyes	112	3.9	162	3.0	104	2.6	254,117	0.8	1,014	0.9
Head, Excluding Ears, Face, Eyes	85	2.9	159	2.9	113	2.8	625,949	1.9	2,070	1.8
Neck	44	1.5	91	1.7	63	1.6	850,413	2.6	1,746	1.5
Trunk, Excluding Back	307	10.6	629	11.6	473	11.6	4,336,525	13.4	17,161	14.6
Back (Spine/Spinal Cord)	492	17.0	980	18.0	793	19.5	8,741,316	27.0	30,541	26.0
Arms	157	5.4	276	5.1	209	5.1	1,449,732	4.5	5,353	4.6
Wrists	97	3.3	185	3.4	137	3.4	1,125,850	3.5	5,317	4.5
Hands, Excluding Fingers	163	5.6	238	4.4	162	4.0	409,878	1.3	2,271	1.9
Fingers	373	12.9	555	10.2	411	10.1	801,470	2.5	2,013	1.7
Upper Extremities, Multiple	27	0.9	69	1.3	50	1.2	577,690	1.8	2,359	2.0
Legs	292	10.1	621	11.4	495	12.2	4,612,575	14.3	19,085	16.2
Ankles	141	4.9	225	4.1	177	4.4	846,960	2.6	3,126	2.7
Feet, Excluding Toes	82	2.8	143	2.6	103	2.5	599,900	1.9	3,176	2.7
Toes	29	1.0	47	0.9	32	0.8	173,039	0.5	683	0.6
Lower Extremities, Multiple	17	0.6	35	0.6	22	0.5	314,683	1.0	1,313	1.1
Body Systems	104	3.6	185	3.4	84	2.1	748,097	2.3	3,003	2.6
Multiple Body Parts	262	9.0	636	11.7	489	12.0	5,402,738	16.7	16,720	14.2
Nonclassifiable	6	0.2	19	0.3	17	0.4	129,936	0.4	42	0.0
SOURCE OF INJURY OR ILLNESS	2,896	100.0%	5,433	100.0%	4,062	100.0%	\$32,327,994	100.0%	117,526	100.0%
Chemical, Chemical Product	59	2.0	101	1.9	67	1.6	90,560	0.3	387	0.3
Containers	410	14.2	780	14.4	591	14.5	4,563,565	14.1	17,098	14.5
Furniture, Fixtures	165	5.7	291	5.4	228	5.6	1,589,383	4.9	6,172	5.3
Machinery	193	6.7	338	6.2	251	6.2	2,774,765	8.6	9,519	8.1
Building Materials	44	1.5	110	2.0	90	2.2	1,059,236	3.3	4,780	4.1
Vehicle, Mobile Equipment Parts	16	0.6	34	0.6	27	0.7	303,479	0.9	949	0.8
Other Parts and Materials	64	2.2	135	2.5	107	2.6	661,093	2.0	2,478	2.1
Plants, Animals, Minerals	172	5.9	263	4.8	194	4.8	433,339	1.3	1,138	1.0
Person, Injured Worker	371	12.8	772	14.2	542	13.3	4,596,579	14.2	19,069	16.2
Person, Other than Injured Worker	133	4.6	271	5.0	194	4.8	1,521,238	4.7	4,440	3.8
Floors, Walkways, Ground	442	15.3	877	16.1	701	17.3	6,809,530	21.1	23,859	20.3
Structures, Other Surfaces	96	3.3	165	3.0	127	3.1	1,231,411	3.8	5,275	4.5
Handtools (Nonpowered)	191	6.6	290	5.3	204	5.0	870,306	2.7	2,994	2.5
Handtools (Powered)	32	1.1	54	1.0	41	1.0	295,783	0.9	1,082	0.9
Other Tools, Instruments, Equipment	92	3.2	165	3.0	118	2.9	427,679	1.3	1,430	1.2
Highway Vehicle, Motorized	98	3.4	208	3.8	163	4.0	1,610,762	5.0	5,131	4.4
Nonpowered Plant Vehicles	56	1.9	89	1.6	63	1.6	467,301	1.4	1,427	1.2
Other Vehicles	50	1.7	108	2.0	92	2.3	1,184,327	3.7	5,101	4.3
Scrap, Waste, Debris	79	2.7	121	2.2	80	2.0	194,386	0.6	241	0.2
Other Sources	133	4.6	261	4.8	182	4.5	1,643,272	5.1	4,956	4.2

Notes: Cost and percent totals may not add due to rounding.

2010 HAWAII WORKERS' COMPENSATION STATISTICS

MAUI	REPORTED		PROCESSED		WITH COST		COST		DAYS LOST	
OCCUPATION	2,896	100.0%	5,433	100.0%	4,062	100.0%	\$32,327,994	100.0%	117,526	100.0%
Executive, Admin. & Managerial	86	3.0	195	3.6	150	3.7	1,464,227	4.5	3,916	3.3
Professional Specialty	197	6.8	400	7.4	276	6.8	1,903,661	5.9	3,197	2.7
Technical Support	56	1.9	118	2.2	86	2.1	729,125	2.3	2,814	2.4
Sales	215	7.4	385	7.1	283	7.0	2,274,061	7.0	7,966	6.8
Administrative Support	160	5.5	335	6.2	233	5.7	1,333,601	4.1	5,157	4.4
Services	1,135	39.2	1,856	34.2	1,361	33.5	8,171,539	25.3	32,935	28.0
Agricultural, Forestry & Fishing	195	6.7	362	6.7	284	7.0	1,721,222	5.3	8,573	7.3
Mechanic, Repairer	195	6.7	359	6.6	266	6.5	2,126,472	6.6	6,937	5.9
Construction Trades	119	4.1	328	6.0	260	6.4	4,244,922	13.1	16,888	14.4
Precision Production	34	1.2	77	1.4	58	1.4	431,178	1.3	1,636	1.4
Operator, Fabricator, Inspector	39	1.3	72	1.3	58	1.4	732,832	2.3	2,152	1.8
Transportation, Material Moving	138	4.8	310	5.7	248	6.1	2,643,798	8.2	9,128	7.8
Handler, Helper, Laborer	307	10.6	585	10.8	463	11.4	4,116,062	12.7	15,619	13.3
Nonclassifiable	20	0.7	51	0.9	36	0.9	435,294	1.3	608	0.5
NATURE OF INJURY OR ILLNESS	2,896	100.0%	5,433	100.0%	4,062	100.0%	\$32,327,994	100.0%	117,526	100.0%
Traumatic Injuries	246	8.5	517	9.5	398	9.8	4,114,012	12.7	15,862	13.5
Fracture	76	2.6	226	4.2	196	4.8	2,630,987	8.1	10,162	8.6
Sprains, Strains	880	30.4	1,700	31.3	1,362	33.5	12,744,266	39.4	47,076	40.1
Cut, Laceration	392	13.5	599	11.0	436	10.7	1,086,358	3.4	3,421	2.9
Puncture, Excluding Bites	68	2.3	113	2.1	82	2.0	98,739	0.3	407	0.3
Abrasions, Scratches	44	1.5	68	1.3	52	1.3	115,256	0.4	145	0.1
Bruises, Contusions	316	10.9	454	8.4	316	7.8	1,567,324	4.8	4,611	3.9
Foreign Bodies	47	1.6	68	1.3	47	1.2	138,767	0.4	63	0.1
Heat Burns	79	2.7	108	2.0	77	1.9	278,950	0.9	500	0.4
Multiple Injuries/Disorders	37	1.3	128	2.4	108	2.7	1,565,577	4.8	3,585	3.1
Back Pain	112	3.9	232	4.3	182	4.5	1,377,349	4.3	5,520	4.7
Pain, Excluding Back	233	8.0	471	8.7	330	8.1	2,769,510	8.6	11,283	9.6
Carpal Tunnel	13	0.4	26	0.5	16	0.4	97,424	0.3	302	0.3
Musculoskeletal	12	0.4	26	0.5	19	0.5	151,038	0.5	540	0.5
Skin Disorders	16	0.6	29	0.5	17	0.4	17,472	0.1	144	0.1
Symptoms	38	1.3	63	1.2	30	0.7	63,977	0.2	136	0.1
Mental Disorders	36	1.2	83	1.5	31	0.8	535,487	1.7	2,397	2.0
Exposure	9	0.3	15	0.3	11	0.3	5,257	0.0	0	0.0
Other Injuries/Illnesses	232	8.0	462	8.5	318	7.8	2,571,097	8.0	10,800	9.2
Nonclassifiable	10	0.3	45	0.8	34	0.8	399,147	1.2	572	0.5
EVENT OR EXPOSURE	2,896	100.0%	5,433	100.0%	4,062	100.0%	\$32,327,994	100.0%	117,526	100.0%
Struck Against	258	8.9	404	7.4	291	7.2	1,099,168	3.4	3,450	2.9
Struck By	479	16.5	747	13.7	526	12.9	1,363,348	4.2	3,399	2.9
Caught In, Under, or Between	72	2.5	136	2.5	108	2.7	868,840	2.7	3,805	3.2
Rubbed or Abraded	66	2.3	91	1.7	62	1.5	176,144	0.5	450	0.4
Other Contact with Object, Equip.	21	0.7	46	0.8	29	0.7	115,966	0.4	455	0.4
Falls (From Elevation)	138	4.8	329	6.1	273	6.7	3,657,634	11.3	13,905	11.8
Falls (To Same Level)	344	11.9	633	11.7	497	12.2	3,784,228	11.7	12,792	10.9
Falls (Other)	3	0.1	12	0.2	8	0.2	77,952	0.2	533	0.5
Bodily Reaction	274	9.5	524	9.6	400	9.8	3,099,189	9.6	14,242	12.1
Overexertion	698	24.1	1,391	25.6	1,118	27.5	11,271,347	34.9	44,562	37.9
Repetitive Motion	47	1.6	135	2.5	88	2.2	863,290	2.7	2,512	2.1
Heart Attacks and Strokes	7	0.2	12	0.2	3	0.1	41,835	0.1	476	0.4
Contact (Electrical)	3	0.1	8	0.1	6	0.1	55,437	0.2	26	0.0
Contact (Temperature Extremes)	74	2.6	103	1.9	72	1.8	277,865	0.9	467	0.4
Exposure (Noise)	6	0.2	12	0.2	7	0.2	8,226	0.0	3	0.0
Exposure (Harmful Substance)	169	5.8	290	5.3	172	4.2	786,835	2.4	2,424	2.1
Accidents (Highway Vehicle)	32	1.1	87	1.6	66	1.6	770,301	2.4	1,520	1.3
Accidents (Non-Highway Vehicle)	31	1.1	81	1.5	70	1.7	1,028,441	3.2	3,249	2.8
Accidents (Other Transportation)	22	0.8	51	0.9	44	1.1	814,775	2.5	3,800	3.2
Explosions	3	0.1	6	0.1	4	0.1	126,265	0.4	728	0.6
Assaults, Violent Acts	88	3.0	183	3.4	118	2.9	1,089,084	3.4	2,633	2.2
Other Events/Exposures	11	0.4	34	0.6	29	0.7	177,507	0.5	136	0.1
Nonclassifiable	50	1.7	118	2.2	71	1.7	774,317	2.4	1,959	1.7

Notes: Cost and percent totals may not add due to rounding.

2010 HAWAII WORKERS' COMPENSATION STATISTICS

HAWAII	REPORTED		PROCESSED		WITH COST		COST		DAYS LOST	
INDUSTRY	2,477	100.0%	5,459	100.0%	4,031	100.0%	\$36,955,788	100.0%	164,640	100.0%
Natural Resources & Mining	74	3.0	149	2.7	119	3.0	1,184,507	3.2	5,584	3.4
Construction	154	6.2	429	7.9	366	9.1	6,262,222	16.9	22,494	13.7
Manufacturing	62	2.5	141	2.6	123	3.1	1,316,832	3.6	4,219	2.6
Wholesale Trade	75	3.0	157	2.9	133	3.3	1,322,005	3.6	9,380	5.7
Retail Trade	417	16.8	710	13.0	496	12.3	3,311,303	9.0	14,809	9.0
Transportation & Warehousing	115	4.6	284	5.2	206	5.1	2,110,623	5.7	11,439	6.9
Utilities	22	0.9	49	0.9	36	0.9	219,700	0.6	642	0.4
Information	31	1.3	67	1.2	43	1.1	456,392	1.2	1,821	1.1
Fin, Ins, Real Est, Rent, & Leasing	55	2.2	100	1.8	81	2.0	721,093	2.0	1,933	1.2
Professional, Scientific, & Tech.	25	1.0	58	1.1	51	1.3	582,778	1.6	2,931	1.8
Management of Companies & Entrpr.	83	3.4	118	2.2	74	1.8	549,978	1.5	1,740	1.1
Administrative, Support, & Waste	184	7.4	390	7.1	319	7.9	3,725,670	10.1	18,959	11.5
Educational Services	46	1.9	87	1.6	72	1.8	414,614	1.1	1,156	0.7
Health Care & Social Assistance	221	8.9	434	8.0	300	7.4	2,488,182	6.7	13,168	8.0
Arts, Entertainment, & Recreation	42	1.7	78	1.4	65	1.6	289,921	0.8	1,988	1.2
Accommodation and Food Services	326	13.2	578	10.6	433	10.7	3,864,398	10.5	18,054	11.0
Other Services, except Public Admin.	69	2.8	142	2.6	114	2.8	609,409	1.6	2,362	1.4
Public Administration	476	19.2	1,433	26.3	950	23.6	7,116,831	19.3	31,596	19.2
Other	0	0.0	55	1.0	50	1.2	409,330	1.1	365	0.2
PART OF BODY	2,477	100.0%	5,459	100.0%	4,031	100.0%	\$36,955,788	100.0%	164,640	100.0%
Ears	10	0.4	25	0.5	17	0.4	60,865	0.2	33	0.0
Face, Excluding Eyes, Ears	61	2.5	106	1.9	78	1.9	154,212	0.4	461	0.3
Eyes	101	4.1	134	2.5	98	2.4	123,304	0.3	272	0.2
Head, Excluding Ears, Face, Eyes	70	2.8	161	2.9	122	3.0	1,317,179	3.6	4,692	2.8
Neck	45	1.8	111	2.0	87	2.2	619,517	1.7	1,631	1.0
Trunk, Excluding Back	262	10.6	588	10.8	447	11.1	5,395,656	14.6	25,692	15.6
Back (Spine/Spinal Cord)	410	16.6	1,002	18.4	771	19.1	8,665,384	23.4	38,803	23.6
Arms	110	4.4	249	4.6	177	4.4	984,985	2.7	4,432	2.7
Wrists	92	3.7	201	3.7	144	3.6	1,234,586	3.3	5,559	3.4
Hands, Excluding Fingers	123	5.0	222	4.1	163	4.0	559,710	1.5	1,165	0.7
Fingers	297	12.0	467	8.6	355	8.8	1,400,871	3.8	6,147	3.7
Upper Extremities, Multiple	32	1.3	75	1.4	49	1.2	465,990	1.3	2,022	1.2
Legs	248	10.0	591	10.8	448	11.1	4,395,277	11.9	20,656	12.5
Ankles	98	4.0	193	3.5	149	3.7	1,095,887	3.0	5,594	3.4
Feet, Excluding Toes	66	2.7	122	2.2	97	2.4	455,954	1.2	3,313	2.0
Toes	27	1.1	53	1.0	43	1.1	102,900	0.3	433	0.3
Lower Extremities, Multiple	17	0.7	47	0.9	40	1.0	351,736	1.0	1,746	1.1
Body Systems	128	5.2	282	5.2	118	2.9	1,205,784	3.3	6,942	4.2
Multiple Body Parts	261	10.5	774	14.2	583	14.5	7,419,399	20.1	33,574	20.4
Nonclassifiable	19	0.8	56	1.0	45	1.1	946,592	2.6	1,473	0.9
SOURCE OF INJURY OR ILLNESS	2,477	100.0%	5,459	100.0%	4,031	100.0%	\$36,955,788	100.0%	164,640	100.0%
Chemical, Chemical Product	54	2.2	92	1.7	55	1.4	281,996	0.8	915	0.6
Containers	338	13.6	708	13.0	533	13.2	4,843,388	13.1	23,001	14.0
Furniture, Fixtures	101	4.1	214	3.9	157	3.9	1,310,195	3.5	7,382	4.5
Machinery	154	6.2	293	5.4	230	5.7	1,929,048	5.2	8,913	5.4
Building Materials	61	2.5	135	2.5	102	2.5	922,700	2.5	3,405	2.1
Vehicle, Mobile Equipment Parts	36	1.5	63	1.2	55	1.4	328,939	0.9	2,059	1.3
Other Parts and Materials	62	2.5	123	2.3	94	2.3	1,028,471	2.8	2,814	1.7
Plants, Animals, Minerals	152	6.1	266	4.9	195	4.8	1,174,779	3.2	5,726	3.5
Person, Injured Worker	305	12.3	778	14.3	503	12.5	4,697,541	12.7	24,036	14.6
Person, Other than Injured Worker	153	6.2	364	6.7	254	6.3	2,278,720	6.2	10,739	6.5
Floors, Walkways, Ground	342	13.8	883	16.2	699	17.3	7,483,299	20.2	34,700	21.1
Structures, Other Surfaces	77	3.1	166	3.0	120	3.0	1,096,746	3.0	5,519	3.4
Handtools (Nonpowered)	161	6.5	251	4.6	192	4.8	615,095	1.7	2,693	1.6
Handtools (Powered)	30	1.2	65	1.2	55	1.4	322,514	0.9	1,538	0.9
Other Tools, Instruments, Equipment	76	3.1	147	2.7	103	2.6	566,017	1.5	1,705	1.0
Highway Vehicle, Motorized	118	4.8	346	6.3	260	6.5	3,400,701	9.2	13,705	8.3
Nonpowered Plant Vehicles	51	2.1	99	1.8	77	1.9	727,480	2.0	3,013	1.8
Other Vehicles	34	1.4	93	1.7	82	2.0	1,044,054	2.8	4,890	3.0
Scrap, Waste, Debris	54	2.2	82	1.5	59	1.5	143,667	0.4	183	0.1
Other Sources	118	4.8	291	5.3	206	5.1	2,760,438	7.5	7,704	4.7

Notes: Cost and percent totals may not add due to rounding.

2010 HAWAII WORKERS' COMPENSATION STATISTICS

HAWAII	REPORTED		PROCESSED		WITH COST		COST		DAYS LOST	
OCCUPATION	2,477	100.0%	5,459	100.0%	4,031	100.0%	\$36,955,788	100.0%	164,640	100.0%
Executive, Admin. & Managerial	63	2.5	180	3.3	135	3.3	1,407,161	3.8	5,063	3.1
Professional Specialty	205	8.3	438	8.0	304	7.5	2,239,142	6.1	7,455	4.5
Technical Support	70	2.8	139	2.5	102	2.5	819,990	2.2	3,532	2.2
Sales	190	7.7	354	6.5	252	6.3	2,089,680	5.7	9,496	5.8
Administrative Support	155	6.3	385	7.1	269	6.7	1,855,659	5.0	6,866	4.2
Services	747	30.2	1,595	29.2	1,130	28.0	8,595,822	23.3	40,263	24.5
Agricultural, Forestry & Fishing	211	8.5	419	7.7	324	8.0	2,424,190	6.6	15,041	9.1
Mechanic, Repairer	140	5.7	280	5.1	211	5.2	2,092,705	5.7	9,022	5.5
Construction Trades	124	5.0	331	6.1	292	7.2	4,352,130	11.8	18,014	10.9
Precision Production	35	1.4	66	1.2	52	1.3	541,185	1.5	2,125	1.3
Operator, Fabricator, Inspector	46	1.9	97	1.8	82	2.0	857,728	2.3	3,856	2.3
Transportation, Material Moving	139	5.6	395	7.2	300	7.4	3,939,985	10.7	20,479	12.4
Handler, Helper, Laborer	337	13.6	707	13.0	525	13.0	4,641,457	12.6	23,008	14.0
Nonclassifiable	15	0.6	73	1.3	53	1.3	1,098,954	3.0	420	0.3
NATURE OF INJURY OR ILLNESS	2,477	100.0%	5,459	100.0%	4,031	100.0%	\$36,955,788	100.0%	164,640	100.0%
Traumatic Injuries	213	8.6	503	9.2	382	9.5	4,266,970	11.5	18,874	11.5
Fracture	79	3.2	240	4.4	202	5.0	3,236,931	8.8	12,475	7.6
Sprains, Strains	722	29.1	1,632	29.9	1,256	31.2	12,098,536	32.7	55,372	33.6
Cut, Laceration	319	12.9	496	9.1	380	9.4	1,237,624	3.3	4,073	2.5
Puncture, Excluding Bites	58	2.3	85	1.6	65	1.6	131,297	0.4	783	0.5
Abrasions, Scratches	42	1.7	75	1.4	54	1.3	181,754	0.5	1,171	0.7
Bruises, Contusions	219	8.8	377	6.9	272	6.7	1,726,229	4.7	10,019	6.1
Foreign Bodies	40	1.6	51	0.9	35	0.9	14,209	0.0	10	0.0
Heat Burns	51	2.1	85	1.6	63	1.6	136,000	0.4	919	0.6
Multiple Injuries/Disorders	43	1.7	183	3.4	145	3.6	1,860,588	5.0	6,986	4.2
Back Pain	89	3.6	281	5.1	223	5.5	2,588,310	7.0	13,863	8.4
Pain, Excluding Back	219	8.8	514	9.4	372	9.2	3,501,453	9.5	18,915	11.5
Carpal Tunnel	13	0.5	39	0.7	22	0.5	201,444	0.5	1,101	0.7
Musculoskeletal	11	0.4	31	0.6	20	0.5	228,296	0.6	1,782	1.1
Skin Disorders	14	0.6	32	0.6	25	0.6	59,989	0.2	108	0.1
Symptoms	49	2.0	77	1.4	29	0.7	151,440	0.4	434	0.3
Mental Disorders	57	2.3	165	3.0	65	1.6	861,224	2.3	6,694	4.1
Exposure	9	0.4	18	0.3	11	0.3	7,103	0.0	17	0.0
Other Injuries/Illnesses	217	8.8	500	9.2	351	8.7	3,186,483	8.6	10,538	6.4
Nonclassifiable	13	0.5	75	1.4	59	1.5	1,279,908	3.5	506	0.3
EVENT OR EXPOSURE	2,477	100.0%	5,459	100.0%	4,031	100.0%	\$36,955,788	100.0%	164,640	100.0%
Struck Against	211	8.5	335	6.1	234	5.8	768,514	2.1	3,751	2.3
Struck By	380	15.3	661	12.1	515	12.8	2,632,562	7.1	10,545	6.4
Caught In, Under, or Between	65	2.6	117	2.1	94	2.3	729,137	2.0	2,600	1.6
Rubbed or Abraded	57	2.3	74	1.4	50	1.2	75,953	0.2	83	0.1
Other Contact with Object, Equip.	21	0.8	40	0.7	29	0.7	184,900	0.5	1,021	0.6
Falls (From Elevation)	119	4.8	326	6.0	267	6.6	4,054,790	11.0	17,237	10.5
Falls (To Same Level)	254	10.3	624	11.4	488	12.1	4,135,231	11.2	18,819	11.4
Falls (Other)	8	0.3	19	0.3	12	0.3	35,909	0.1	363	0.2
Bodily Reaction	185	7.5	444	8.1	336	8.3	2,780,210	7.5	12,793	7.8
Overexertion	621	25.1	1,414	25.9	1,077	26.7	11,508,266	31.1	54,678	33.2
Repetitive Motion	44	1.8	146	2.7	91	2.3	1,053,564	2.9	6,445	3.9
Heart Attacks and Strokes	12	0.5	21	0.4	5	0.1	72,494	0.2	90	0.1
Contact (Electrical)	5	0.2	11	0.2	9	0.2	231,839	0.6	271	0.2
Contact (Temperature Extremes)	48	1.9	81	1.5	60	1.5	130,901	0.4	893	0.5
Exposure (Noise)	1	0.0	6	0.1	1	0.0	276	0.0	0	0.0
Exposure (Harmful Substance)	177	7.2	331	6.1	168	4.2	818,135	2.2	4,888	3.0
Accidents (Highway Vehicle)	60	2.4	211	3.9	163	4.0	2,232,086	6.0	7,934	4.8
Accidents (Non-Highway Vehicle)	23	0.9	65	1.2	53	1.3	957,170	2.6	5,495	3.3
Accidents (Other Transportation)	13	0.5	44	0.8	39	1.0	588,185	1.6	2,247	1.4
Explosions	7	0.3	10	0.2	10	0.3	63,762	0.2	383	0.2
Assaults, Violent Acts	100	4.0	269	4.9	187	4.6	1,669,281	4.5	9,785	5.9
Other Events/Exposures	13	0.5	47	0.9	33	0.8	360,658	1.0	627	0.4
Nonclassifiable	53	2.1	163	3.0	110	2.7	1,871,965	5.1	3,692	2.2

Notes: Cost and percent totals may not add due to rounding.

2010 HAWAII WORKERS' COMPENSATION STATISTICS

KAUAI	REPORTED		PROCESSED		WITH COST		COST		DAYS LOST	
INDUSTRY	1,357	100.0%	2,400	100.0%	1,781	100.0%	\$13,812,038	100.0%	48,876	100.0%
Natural Resources & Mining	44	3.2	95	4.0	61	3.4	682,005	4.9	3,046	6.2
Construction	95	7.0	181	7.5	152	8.5	2,137,146	15.5	7,971	16.3
Manufacturing	16	1.2	32	1.3	27	1.5	457,613	3.3	1,337	2.7
Wholesale Trade	24	1.8	35	1.5	25	1.4	293,656	2.1	982	2.0
Retail Trade	169	12.5	281	11.7	207	11.6	1,342,952	9.7	3,987	8.2
Transportation & Warehousing	48	3.5	95	4.0	67	3.8	415,794	3.0	2,356	4.8
Utilities	9	0.7	12	0.5	8	0.4	7,215	0.1	13	0.0
Information	18	1.3	30	1.3	24	1.3	138,854	1.0	374	0.8
Fin, Ins, Real Est, Rent, & Leasing	45	3.3	72	3.0	58	3.3	302,227	2.2	1,206	2.5
Professional, Scientific, & Tech.	29	2.1	39	1.6	33	1.9	152,676	1.1	582	1.2
Management of Companies & Entrpr.	21	1.5	30	1.3	22	1.2	147,513	1.1	604	1.2
Administrative, Support, & Waste	84	6.2	157	6.5	128	7.2	1,972,296	14.3	5,442	11.1
Educational Services	2	0.1	6	0.3	5	0.3	18,471	0.1	110	0.2
Health Care & Social Assistance	100	7.4	155	6.5	123	6.9	626,029	4.5	1,836	3.8
Arts, Entertainment, & Recreation	45	3.3	68	2.8	51	2.9	282,045	2.0	1,846	3.8
Accommodation and Food Services	334	24.6	509	21.2	349	19.6	2,003,556	14.5	6,128	12.5
Other Services, except Public Admin.	43	3.2	66	2.8	54	3.0	268,161	1.9	624	1.3
Public Administration	230	16.9	522	21.8	374	21.0	2,503,897	18.1	10,446	21.4
Other	1	0.1	15	0.6	13	0.7	59,932	0.4	(14)	0.0
PART OF BODY	1,357	100.0%	2,400	100.0%	1,781	100.0%	\$13,812,038	100.0%	48,876	100.0%
Ears	3	0.2	5	0.2	3	0.2	2,260	0.0	5	0.0
Face, Excluding Eyes, Ears	36	2.7	49	2.0	38	2.1	103,110	0.7	305	0.6
Eyes	72	5.3	93	3.9	74	4.2	77,727	0.6	155	0.3
Head, Excluding Ears, Face, Eyes	37	2.7	58	2.4	43	2.4	287,313	2.1	227	0.5
Neck	15	1.1	32	1.3	20	1.1	49,726	0.4	5	0.0
Trunk, Excluding Back	135	9.9	289	12.0	234	13.1	2,296,552	16.6	9,977	20.4
Back (Spine/Spinal Cord)	210	15.5	411	17.1	304	17.1	3,393,859	24.6	10,678	21.8
Arms	72	5.3	110	4.6	79	4.4	382,248	2.8	1,818	3.7
Wrists	49	3.6	88	3.7	62	3.5	466,614	3.4	1,667	3.4
Hands, Excluding Fingers	53	3.9	89	3.7	68	3.8	333,502	2.4	1,352	2.8
Fingers	182	13.4	244	10.2	198	11.1	561,697	4.1	1,541	3.2
Upper Extremities, Multiple	10	0.7	20	0.8	14	0.8	57,934	0.4	79	0.2
Legs	135	9.9	258	10.8	196	11.0	1,629,247	11.8	6,988	14.3
Ankles	55	4.1	81	3.4	64	3.6	297,452	2.2	1,308	2.7
Feet, Excluding Toes	46	3.4	73	3.0	60	3.4	256,738	1.9	1,333	2.7
Toes	17	1.3	28	1.2	20	1.1	32,707	0.2	267	0.5
Lower Extremities, Multiple	16	1.2	26	1.1	20	1.1	196,002	1.4	510	1.0
Body Systems	70	5.2	150	6.3	60	3.4	779,342	5.6	3,609	7.4
Multiple Body Parts	141	10.4	290	12.1	221	12.4	2,592,361	18.8	7,052	14.4
Nonclassifiable	3	0.2	6	0.3	3	0.2	15,647	0.1	0	0.0
SOURCE OF INJURY OR ILLNESS	1,357	100.0%	2,400	100.0%	1,781	100.0%	\$13,812,038	100.0%	48,876	100.0%
Chemical, Chemical Product	31	2.3	46	1.9	29	1.6	72,368	0.5	367	0.8
Containers	197	14.5	350	14.6	263	14.8	3,229,314	23.4	7,868	16.1
Furniture, Fixtures	81	6.0	132	5.5	97	5.4	518,058	3.8	2,243	4.6
Machinery	67	4.9	127	5.3	100	5.6	1,032,704	7.5	2,457	5.0
Building Materials	21	1.5	37	1.5	32	1.8	232,551	1.7	389	0.8
Vehicle, Mobile Equipment Parts	14	1.0	25	1.0	17	1.0	166,500	1.2	309	0.6
Other Parts and Materials	32	2.4	47	2.0	37	2.1	217,556	1.6	559	1.1
Plants, Animals, Minerals	91	6.7	135	5.6	97	5.4	334,169	2.4	656	1.3
Person, Injured Worker	169	12.5	346	14.4	215	12.1	1,873,179	13.6	8,446	17.3
Person, Other than Injured Worker	81	6.0	136	5.7	108	6.1	589,846	4.3	2,478	5.1
Floors, Walkways, Ground	190	14.0	381	15.9	301	16.9	2,270,287	16.4	9,235	18.9
Structures, Other Surfaces	41	3.0	73	3.0	51	2.9	438,906	3.2	2,614	5.3
Handtools (Nonpowered)	85	6.3	110	4.6	95	5.3	386,474	2.8	2,320	4.7
Handtools (Powered)	20	1.5	33	1.4	25	1.4	217,776	1.6	1,068	2.2
Other Tools, Instruments, Equipment	27	2.0	55	2.3	40	2.2	139,821	1.0	731	1.5
Highway Vehicle, Motorized	48	3.5	104	4.3	86	4.8	862,123	6.2	2,360	4.8
Nonpowered Plant Vehicles	21	1.5	36	1.5	30	1.7	199,792	1.4	1,299	2.7
Other Vehicles	16	1.2	33	1.4	30	1.7	259,988	1.9	1,075	2.2
Scrap, Waste, Debris	48	3.5	67	2.8	56	3.1	191,967	1.4	398	0.8
Other Sources	77	5.7	127	5.3	72	4.0	578,659	4.2	2,004	4.1

Notes: Cost and percent totals may not add due to rounding.

2010 HAWAII WORKERS' COMPENSATION STATISTICS

KAUAI	REPORTED		PROCESSED		WITH COST		COST		DAYS LOST	
OCCUPATION	1,357	100.0%	2,400	100.0%	1,781	100.0%	\$13,812,038	100.0%	48,876	100.0%
Executive, Admin. & Managerial	34	2.5	77	3.2	49	2.8	391,363	2.8	1,186	2.4
Professional Specialty	88	6.5	153	6.4	113	6.3	564,932	4.1	2,131	4.4
Technical Support	41	3.0	55	2.3	45	2.5	203,176	1.5	1,111	2.3
Sales	84	6.2	149	6.2	107	6.0	817,009	5.9	2,759	5.6
Administrative Support	88	6.5	160	6.7	108	6.1	531,120	3.8	2,115	4.3
Services	458	33.8	748	31.2	556	31.2	3,104,211	22.5	12,688	26.0
Agricultural, Forestry & Fishing	126	9.3	219	9.1	151	8.5	1,029,767	7.5	4,656	9.5
Mechanic, Repairer	83	6.1	154	6.4	115	6.5	762,359	5.5	1,742	3.6
Construction Trades	75	5.5	162	6.8	136	7.6	2,169,409	15.7	6,901	14.1
Precision Production	16	1.2	26	1.1	22	1.2	268,747	1.9	789	1.6
Operator, Fabricator, Inspector	17	1.3	35	1.5	25	1.4	432,351	3.1	1,363	2.8
Transportation, Material Moving	74	5.5	140	5.8	113	6.3	1,008,423	7.3	4,567	9.3
Handler, Helper, Laborer	168	12.4	300	12.5	228	12.8	2,491,536	18.0	6,744	13.8
Nonclassifiable	5	0.4	22	0.9	13	0.7	37,635	0.3	124	0.3
NATURE OF INJURY OR ILLNESS	1,357	100.0%	2,400	100.0%	1,781	100.0%	\$13,812,038	100.0%	48,876	100.0%
Traumatic Injuries	113	8.3	212	8.8	165	9.3	1,298,849	9.4	5,751	11.8
Fracture	41	3.0	104	4.3	91	5.1	1,374,302	10.0	3,869	7.9
Sprains, Strains	376	27.7	724	30.2	581	32.6	4,754,691	34.4	19,892	40.7
Cut, Laceration	182	13.4	229	9.5	190	10.7	417,098	3.0	1,194	2.4
Puncture, Excluding Bites	37	2.7	48	2.0	35	2.0	28,718	0.2	8	0.0
Abrasions, Scratches	26	1.9	33	1.4	27	1.5	78,130	0.6	227	0.5
Bruises, Contusions	143	10.5	215	9.0	159	8.9	860,789	6.2	2,434	5.0
Foreign Bodies	31	2.3	41	1.7	33	1.9	19,449	0.1	6	0.0
Heat Burns	29	2.1	41	1.7	27	1.5	168,661	1.2	240	0.5
Multiple Injuries/Disorders	19	1.4	59	2.5	44	2.5	619,890	4.5	794	1.6
Back Pain	36	2.7	76	3.2	50	2.8	1,296,613	9.4	3,000	6.1
Pain, Excluding Back	114	8.4	207	8.6	143	8.0	1,150,578	8.3	5,388	11.0
Carpal Tunnel	5	0.4	11	0.5	6	0.3	63,837	0.5	253	0.5
Musculoskeletal	6	0.4	17	0.7	12	0.7	102,031	0.7	413	0.8
Skin Disorders	6	0.4	15	0.6	11	0.6	4,036	0.0	0	0.0
Symptoms	22	1.6	31	1.3	10	0.6	28,837	0.2	82	0.2
Mental Disorders	37	2.7	92	3.8	32	1.8	444,145	3.2	2,799	5.7
Exposure	3	0.2	3	0.1	2	0.1	1,549	0.0	0	0.0
Other Injuries/Illnesses	127	9.4	230	9.6	156	8.8	1,035,904	7.5	2,540	5.2
Nonclassifiable	4	0.3	12	0.5	7	0.4	63,931	0.5	(14)	0.0
EVENT OR EXPOSURE	1,357	100.0%	2,400	100.0%	1,781	100.0%	\$13,812,038	100.0%	48,876	100.0%
Struck Against	134	9.9	175	7.3	134	7.5	463,115	3.4	1,905	3.9
Struck By	201	14.8	286	11.9	236	13.3	1,131,471	8.2	2,587	5.3
Caught In, Under, or Between	32	2.4	54	2.3	41	2.3	337,445	2.4	1,537	3.1
Rubbed or Abraded	37	2.7	48	2.0	36	2.0	21,696	0.2	5	0.0
Other Contact with Object, Equip.	13	1.0	22	0.9	18	1.0	45,102	0.3	65	0.1
Falls (From Elevation)	74	5.5	165	6.9	139	7.8	1,227,717	8.9	5,594	11.4
Falls (To Same Level)	151	11.1	269	11.2	201	11.3	1,462,422	10.6	4,613	9.4
Falls (Other)	1	0.1	7	0.3	7	0.4	71,826	0.5	266	0.5
Bodily Reaction	107	7.9	193	8.0	148	8.3	979,030	7.1	4,710	9.6
Overexertion	328	24.2	636	26.5	483	27.1	5,039,641	36.5	17,778	36.4
Repetitive Motion	17	1.3	50	2.1	31	1.7	379,220	2.7	1,489	3.0
Heart Attacks and Strokes	4	0.3	9	0.4	3	0.2	5,355	0.0	0	0.0
Contact (Electrical)	4	0.3	6	0.3	3	0.2	191,408	1.4	364	0.7
Contact (Temperature Extremes)	27	2.0	39	1.6	24	1.3	106,143	0.8	100	0.2
Exposure (Noise)	1	0.1	2	0.1	0	0.0	0	0.0	0	0.0
Exposure (Harmful Substance)	100	7.4	174	7.3	87	4.9	484,782	3.5	2,204	4.5
Accidents (Highway Vehicle)	17	1.3	49	2.0	36	2.0	567,836	4.1	831	1.7
Accidents (Non-Highway Vehicle)	11	0.8	23	1.0	19	1.1	172,863	1.3	317	0.6
Accidents (Other Transportation)	5	0.4	15	0.6	14	0.8	137,199	1.0	271	0.6
Explosions	4	0.3	5	0.2	4	0.2	29,260	0.2	70	0.1
Assaults, Violent Acts	52	3.8	95	4.0	78	4.4	480,840	3.5	2,432	5.0
Other Events/Exposures	7	0.5	17	0.7	11	0.6	122,639	0.9	87	0.2
Nonclassifiable	30	2.2	61	2.5	28	1.6	355,028	2.6	1,651	3.4

Notes: Cost and percent totals may not add due to rounding.

2010 HAWAII REPORTED FATALITIES

	STATE	% of TOTAL	OAHU	HAWAII COUNTY	MAUI COUNTY	KAUAI
TOTAL	27	100.0%	20	2	3	2
SEX						
Male	24	88.9	18	2	2	2
Female	3	11.1	2	0	1	0
MARITAL STATUS						
Married	16	59.3	12	1	1	2
Single	11	40.7	8	1	2	0
AGE						
18-24	2	7.4	2	0	0	0
25-34	5	18.5	2	2	0	1
35-44	3	11.1	1	0	1	1
45-54	8	29.6	6	0	2	0
55-64	7	25.9	7	0	0	0
Over 64	2	7.4	2	0	0	0
INDUSTRY						
Natural Resources & Mining	1	3.7	1	0	0	0
Construction	4	14.8	2	1	0	1
Manufacturing	1	3.7	0	0	0	1
Wholesale Trade	2	7.4	2	0	0	0
Retail Trade	2	7.4	2	0	0	0
Transportation & Warehousing	2	7.4	2	0	0	0
Professional, Scientific, & Tech.	1	3.7	1	0	0	0
Management of Companies & Entrpr.	2	7.4	2	0	0	0
Administrative, Support, & Waste	4	14.8	1	1	2	0
Educational Services	1	3.7	1	0	0	0
Health Care & Social Assistance	2	7.4	2	0	0	0
Accommodation and Food Services	2	7.4	1	0	1	0
Other Services, except Public Admin.	2	7.4	2	0	0	0
Public Administration	1	3.7	1	0	0	0
OCCUPATION						
Executive, Admin, & Managerial	5	18.5	4	0	1	0
Professional Specialty	1	3.7	1	0	0	0
Administrative Support	3	11.1	2	0	0	1
Services	6	22.2	4	0	2	0
Agricultural, Forestry & Fishing	3	11.1	2	1	0	0
Mechanic, Repairer	1	3.7	1	0	0	0
Construction Trades	3	11.1	1	1	0	1
Transportation, Material Moving	4	14.8	4	0	0	0
Handler, Helper, Laborer	1	3.7	1	0	0	0
CAUSE						
Falls	4	14.8	3	1	0	0
Bodily Reaction	3	11.1	2	1	0	0
Heart Attacks and Strokes	7	25.9	5	0	2	0
Exposure (Harmful Substance)	2	7.4	1	0	1	0
Transportation Accidents	5	18.5	4	0	0	1
Assault or Violent Acts	2	7.4	2	0	0	0
Nonclassifiable	4	14.8	3	0	0	1

Note: Percentages may not add due to rounding.

2010 HEARINGS AND DECISIONS ISSUED

	STATE	OAHU	EAST HAWAII	WEST HAWAII	MAUI	KAUAI
HEARINGS	2,106	1,227*	112	215	377	175
DECISIONS ISSUED	6,690	4,076*	655	487	1,019	453
Act 59 Settlement	487	278	44	52	84	29
Attorney Fees	1,340	872	161	70	173	64
Denial	208	100	23	20	30	35
Disfigurement	482	270	77	54	47	34
Fatality	17	13	1	0	0	3
Medical	745	393	66	70	162	54
Permanent Partial	1,713	1,204	130	105	251	23
Permanent Total	17	13	1	0	3	0
Temporary Partial	5	2	0	0	2	1
Temporary Total	413	201	25	26	34	127
Benefit Adjustments	1	0	0	1	0	0
Other	1,262	730	127	89	233	83

* Includes East Hawaii cases conducted by Oahu hearings officers remotely via the webcam.

WORKERS' COMPENSATION MAXIMUM WEEKLY WAGE BASE AND MAXIMUM WEEKLY BENEFIT AMOUNT HISTORY

Year	Maximum Weekly Wage Base	Maximum Weekly Benefit Amount	Year	Maximum Weekly Wage Base	Maximum Weekly Benefit Amount
1975	\$232.50	\$155.00	1993	\$689.97	\$460.00
1976	\$250.50	\$167.00	1994	\$721.46	\$481.00
1977	\$268.50	\$179.00	1995	\$736.46	\$491.00
1978	\$283.50	\$189.00	1996	\$743.96	\$496.00
1979	\$300.00	\$200.00	1997	\$751.46	\$501.00
1980	\$322.50	\$215.00	1998	\$761.96	\$508.00
1981	\$352.50	\$235.00	1999	\$778.46	\$519.00
1982	\$378.00	\$252.00	2000	\$793.46	\$529.00
1983	\$399.00	\$266.00	2001	\$820.46	\$547.00
1984	\$421.50	\$281.00	2002	\$845.96	\$564.00
1985	\$436.50	\$291.00	2003	\$869.96	\$580.00
1986	\$448.50	\$299.00	2004	\$893.96	\$596.00
1987	\$477.00	\$318.00	2005	\$932.95	\$622.00
1988	\$501.00	\$334.00	2006	\$980.95	\$654.00
1989	\$537.00	\$358.00	2007	\$1,016.95	\$678.00
1990	\$574.47	\$383.00	2008	\$1,043.95	\$696.00
1991	\$617.97	\$412.00	2009	\$1,087.45	\$725.00
1992	\$655.47	\$437.00	2010	\$1,117.44	\$745.00

2010 DIGEST OF THE WORKERS' COMPENSATION LAW

Purpose	To provide medical, rehabilitation, income, and indemnity benefits to workers suffering work-connected injuries, or in the event of death, income and indemnity benefits to their dependents.
Coverage	All workers except: Federal government workers. Workers for nonprofit organizations if in voluntary or unpaid capacity. Students working for a school, college, or university in return for board, lodging, or tuition. Ordained members of the church. Certain domestic workers. Certain 25% stockholders of a corporation. Owners with 50% or more of a corporation. Real estate salespersons or brokers paid solely by commission.
Eligibility Requirements for Benefits	Employee suffering personal injury by accident arising out of and in the course of employment, or by disease proximately caused by or resulting from the nature of the employment.
Disqualification from Benefits	Injury incurred by willful self-infliction or to another by actively engaging in any unprovoked non-work related physical altercation other than in self-defense or by intoxication. Mental stress claims resulting solely from disciplinary action taken in good faith by employer.
Waiting Period	Three days.
Weekly Benefits	66-2/3% of the worker's average weekly wages for permanent total, partial, and temporary total disabilities. 66-2/3% of difference of wages before and after injury for temporary partial disability.
Benefit Provisions - 2010	Minimum weekly benefits - \$186.00 Maximum weekly benefits - \$745.00 Maximum weekly amount used to compute weekly benefits for surviving spouse - \$1,117.44 Funeral expenses - \$7,450.00 Burial expenses - \$3,725.00
Duration	Medical - as reasonably needed or as the nature or injury requires. Death - various duration for beneficiaries. Temporary total disability - duration of the disability. Permanent total disability - for life.
Appeal Provisions	Within 20 days after a decision has been sent to parties concerned.
Statute of Limitation for Filing a Claim	Within two years after date of injury in which the effects have manifest and within five years after date of accident or occurrence of injury.
Employer's Penalties and Fines	\$250 or \$10 for each employee each day for failure to give security for compensation. Up to \$5,000 for refusing or neglecting to give required notice or to make required reports. 20% of unpaid compensation for default in payment.
Method of Insuring	Through insurance carriers or approved employer self-financing.
Financing	Cost of insurance paid by employer.
Funds	Special Compensation Fund <i>Income:</i> Fines and penalties. Death benefits where there are no dependents. Special assessments. <i>Outgo:</i> To pay benefits to injured employee whose injury occurred prior to 1973 and where the employer or carrier has paid the maximum aggregate, for concurrent employment benefits and for preexisting condition benefits. To reimburse employees/employers effective January 1, 1992 and January 1 of every tenth year thereafter, for the cost of supplemental allowance for permanent total disability payments to employees injured before January 1, 1992 and January 1 of every tenth year thereafter. To injured employee or dependents where employer is in default in payment of compensation. For litigation expense incurred by or on behalf of the Special Compensation Fund. <i>Solvency:</i> When cash balance falls below an amount determined by the Director to be insufficient to meet the fund's current and projected obligation, a levy based on a percentage of gross premiums and a special charge against self-insured until cash balance equals or exceeds an amount determined by the director to be sufficient to meet the fund's current and projected obligations.

DEFINITIONS

Attendant Services	Cost of services of an attendant for a totally disabled employee.
Average Cost Per Case	Total compensation costs divided by the number of processed cases with cost.
Compensation Orders	Decisions made on controverted cases, on awarding of permanent partial disability and disfigurement, and on reopening cases.
Costs	All payments accorded to a claimant to include disability, death, disfigurement, vocational rehabilitation, attendant services, and medical payments.
Days Lost	Number of compensated (calendar) days in which injured workers were not able to work because of temporary total disability. This excludes the three-day waiting period.
Disfigurement	Scar, deformity, discoloration, or other disfiguring consequences resulting from the injury or caused by medical, surgical, and hospital treatment of the employee. This is separate from permanent partial disability.
Employment	That portion of the work force covered by Workers' Compensation law. Annual average taken from the "Employment and Payrolls in Hawaii" report excluding federal government employees.
Event or Exposure	Identifies the circumstance, which directly resulted in the injury or illness.
Industry	Identifies employers by the major type of activity in which they are engaged.
Medical	Physicians and hospital costs and costs for services and supplies.
Nature of Injury or Illness	Identifies the injury or illness in terms of its principal physical characteristic.
Occupation	Identifies the nature of work of the employee.
Part of Body	Identifies the part of the worker's body directly affected by the injury or illness.
Permanent Partial Disability	Injury or illness which results in the complete loss or loss of any member or part of the body or any permanent impairment of functions of the body or part thereof, regardless of any pre-existing disability.
Permanent Total Disability	Any injury or illness other than death, which permanently and totally incapacitates an employee from following any gainful occupation.
Processed Cases	Cases, which have been subject to screening procedures, the injury or illness medically evaluated, and all medical costs and workers' compensation payments totaled. Includes injuries and illnesses, which occurred in the report year or prior years.
Reported Injuries and Illnesses (Reported Cases)	All injuries and illnesses reported to the Disability Compensation Division. These reported injuries or illnesses may not have occurred during the report year.
Reported Fatalities	Any death resulting from an on-the-job injury or illness reported to the Disability Compensation Division.
Source of Injury or Illness	Identifies the object, substance, exposure, or bodily motion, which directly produced or inflicted the injury or illness.
Temporary Partial Disability	A work injury or illness which causes partial rather than total disability for temporary periods. The injured worker is paid a weekly benefit amount of 66-2/3 percent of the difference between his average weekly wages before the injury and his weekly earnings thereafter for the duration of the disability.
Temporary Total Disability	A common type of disability where the work injury or illness causes total disability for temporary periods. The employer or insurance carrier, for the duration of the disability, but not including the first three days, pays the injured worker a weekly benefit amount of 66-2/3 percent of his average weekly wages, but not more than the maximum weekly benefit amount nor less than the minimum weekly benefit amount, or if his average weekly wages are less than the minimum weekly benefit amount, at a rate of 100 percent of his average weekly wages.
Vocational Rehabilitation	Cost of vocational rehabilitation services.

TECHNICAL NOTES

The Workers' Compensation Data Book is based on the annual accumulation of data in the State of Hawaii, Disability Compensation database.

1. The following coding systems and locally revised versions were used to categorize data:
 - a) Industrial attachment is determined by the principal activity of the employer as defined in the **North American Industry Classification System 2002 (NAICS)**. The new NAICS industry groupings better reflect the workings of the U.S. economy, particularly in the services sector. NAICS, developed using a production oriented conceptual framework, groups establishments into industries based on the activity in which they are primarily engaged. It is not an update of the Standard Industrial Classification (SIC) system. NAICS focuses on how products and services are created. More information on NAICS is available at the U.S. Census Bureau website at <http://www.census.gov/epcd/www/naics.html>.
 - b) Codes and definitions used to categorize Nature of Injury or Illness, Part of Body Affected, Source of Injury or Illness, and Event or Exposure were modeled after the **1992 Bureau of Labor Statistics (BLS) Occupational Injury and Illness Classification Structures (OIICS)**. Starting with 1996 data, BLS OIICS data codes were locally modified to 2 digits instead of 4 digits, making the data less detailed.
 - c) Occupational groups are based on the **1990 Alphabetical Index of Industries and Occupations**, developed and published by the Bureau of the Census, Washington, D.C., U.S. Government Printing Office. Starting with 1996 data, the occupation classifications were locally modified, making the data less detailed.
2. From 1999, the employment data source used in the **Worker's Compensation Data Book** has been changed. Instead of the **Labor Force Data Book** employment we are using the **Employment and Payrolls in Hawaii** statistics. Employment data from the later publication may be more in line with workers covered under the Workers' Compensation program. Caution should be taken when reviewing the employment and frequency data for trend analysis prior to 1999.
3. From 2000, the table Hearings and Decisions Issued (previously called Compensation Orders Issued and Number of Hearings) has changed to include Act 59 settlements and attorney fees. The combined category Permanent Partial & Disfigurement no longer exists. Figures are reported under the category with the highest severity. For example: a case with disability payments and disfigurement award would be counted in the disability category and not in disfigurement.
4. Beginning with the **2002 Workers' Compensation Data Book**, there is a new format for the Industry category. The North American Industry Classification System (NAICS) is being used to designate the different industries instead of the Standard Industrial Classification (SIC) system. For trend analysis purposes, the data may not be comparable.
5. Effective with the **2004 Workers' Compensation Data Book**, the close date to process a "reported case" for the preceding calendar year was changed from January 31 to December 31 to accommodate the filing of electronic "WC-1 Employers Report of Industrial Injury". For trend analysis purposes, the data for 2004 may not be comparable.

STATE OF HAWAII
DEPARTMENT OF LABOR AND INDUSTRIAL RELATIONS
RESEARCH AND STATISTICS OFFICE
830 PUNCHBOWL STREET, ROOM 304
HONOLULU, HAWAII 96813