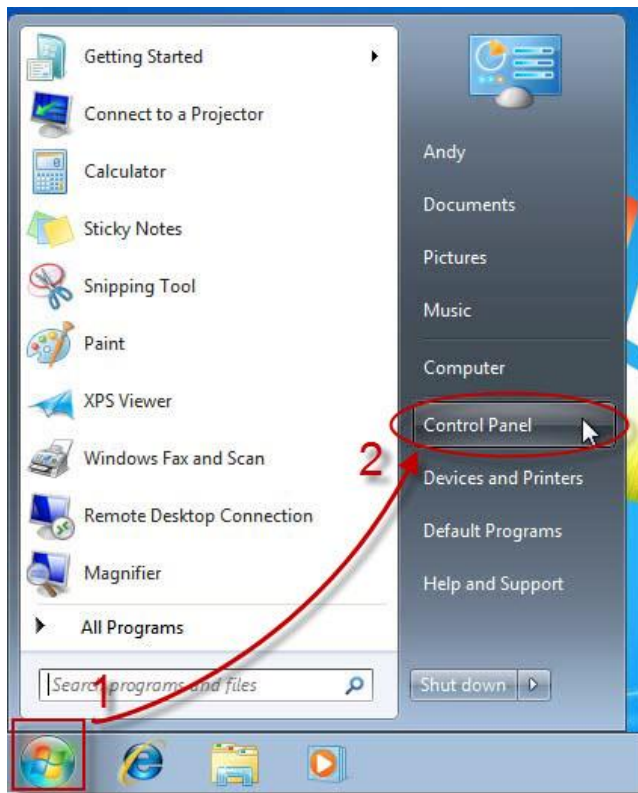
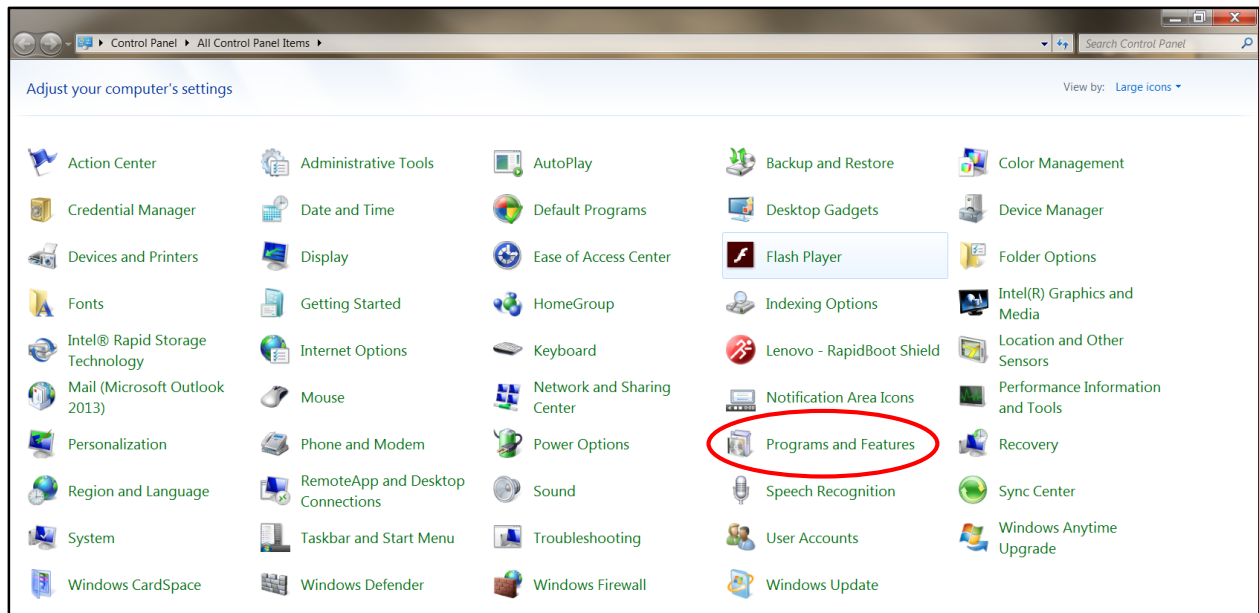


Q: I am unable to Import Excel file into QWRS program.

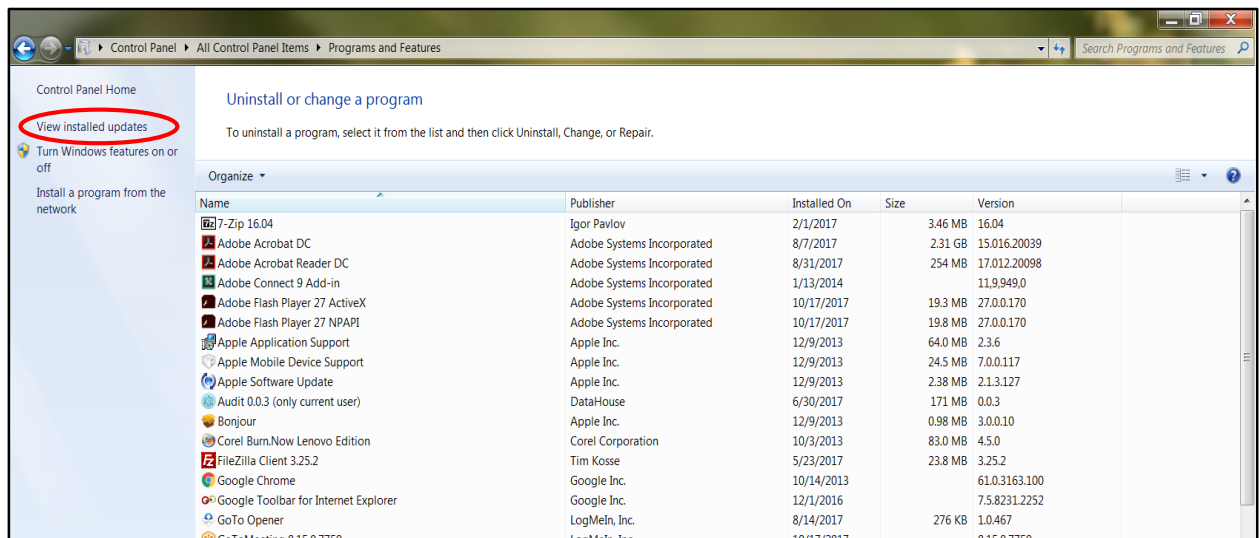
A: Follow the instructions below.



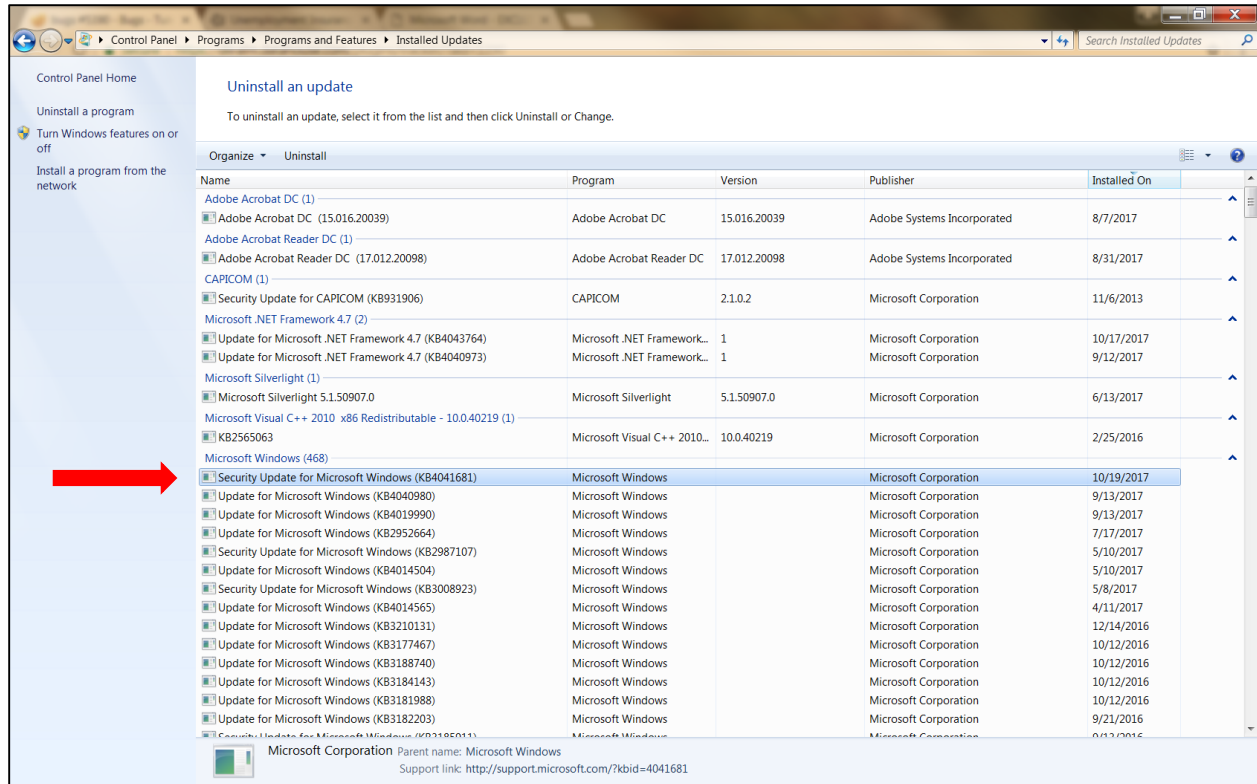
1. Click on "Start" button.
2. Click on "Control Panel"



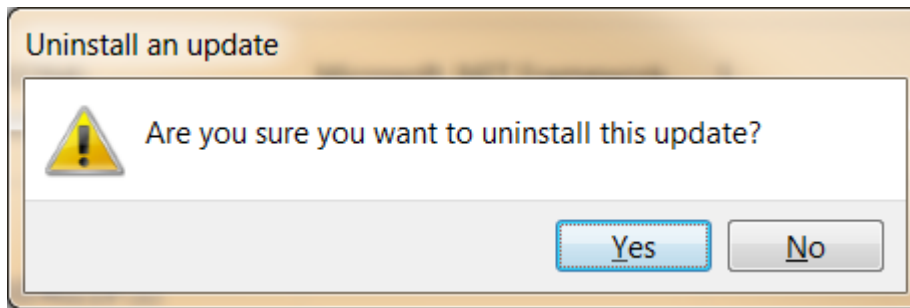
3. Left click on “Programs and Features”.



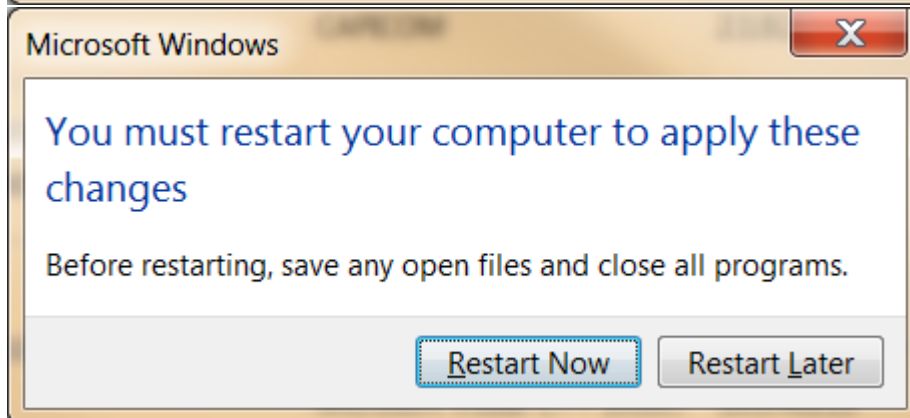
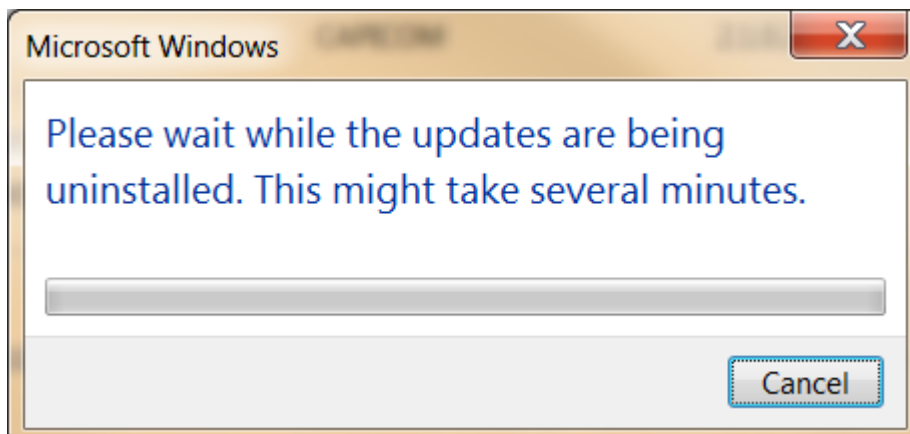
4. Left click “View installed updates” on the left panel.



5. Under Microsoft Windows, left click Security Update KB4041681, then right click to "Uninstall" the update.



6. Select "Yes".



7. You can restart the computer now if you have nothing else running. If not, select restart later and restart the computer later. You must restart your computer to apply these changes.
8. After restarting the computer, you can "Import Quarter Wages" again.
9. The Microsoft Windows update can be installed when you're finished importing Excel spreadsheets.