

workforce **CONNECTIONS**
PEOPLE. PARTNERSHIPS. POSSIBILITIES.

Connecting Employers to a Ready Workforce



Agenda

1. 10:00-10:45am
2. Break
3. 11:00-11:45am
4. Q&A



1. The Las Vegas journey of AJCs

Libraries

Community Colleges

Chambers of Commerce

City Halls

CTA schools

Businesses

Jails



workforce **CONNECTIONS**
PEOPLE. PARTNERSHIPS. POSSIBILITIES.

AJCs

AJCs at Vegas Chamber and other partners



BUSINESS HUB 

An American **JobCenter** of Nevada



CAREER HUB 

An American **JobCenter** of Nevada



YOUTH HUB 

An American **JobCenter** of Nevada



workforce **CONNECTIONS**
PEOPLE. PARTNERSHIPS. POSSIBILITIES.

AJCs

First Chamber in the Nation to Host an AJC



Connecting Employers to a Ready Workforce

AJCs

First Business in the Nation to host an AJC





workforce **CONNECTIONS**
PEOPLE. PARTNERSHIPS. POSSIBILITIES.

AJCs

First CTA in the Nation to host an AJC



AJCs

Casa Grande Transitional Center





2. Outreach strategies

Campaign with Regional Transportation Commission
Chambers of Commerce
Regional Development Agencies
Community Recreation Centers
Municipalities

NEXT STOP: YOUR CAREER!

Between the ages of 16 and 24
and not sure what your next step is?
EmployNV Youth Hub is here to help you
figure out your next career step.

LEARN MORE AT

EMPLOYNVYOUTH HUB.ORG/RTC



RTC

EmployNV

YOUTH HUB

An American Job Center of Nevada

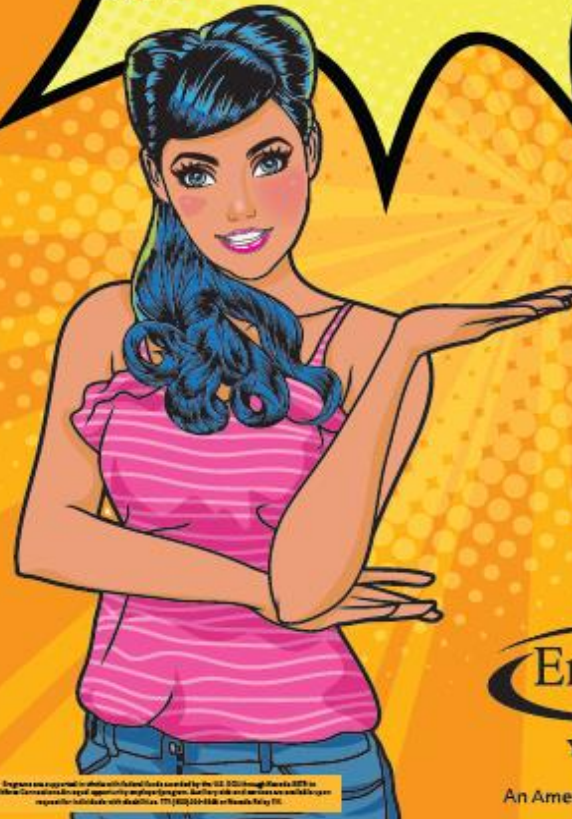
Programs are supported in whole with federal funds awarded by the U.S. Department of Health & Human Services. Certain services are provided by employers. Funding for this and other services are made through separate individuals with disabilities. TTY: (800) 255-8888 or Nevada Relay TDD.

NEXT STOP: YOUR CAREER!

Between the ages of 16 and 24
and not sure what your next step is?
EmployNV Youth Hub is here to help you
figure out your next career step.

LEARN MORE AT

EMPLOYNVYOUTH HUB.ORG/RTC



RTC

EmployNV

YOUTH HUB

An American Job Center of Nevada

Programs are supported in whole with federal funds awarded by the U.S. Department of Health & Human Services. Certain services are provided by employers. Funding for this and other services are made through separate individuals with disabilities. TTY: (800) 255-8888 or Nevada Relay TDD.



workforce **CONNECTIONS**
PEOPLE. PARTNERSHIPS. POSSIBILITIES.

Embedded AJC staff at Vegas Chamber and Las Vegas Global Economic Alliance





workforce **CONNECTIONS**
PEOPLE. PARTNERSHIPS. POSSIBILITIES.

3. Utilization of data/statistics

Community Investment Impact Dashboard
Programmatic Dashboards
Automated Monitoring



Community Investment Impact

Welcome to the future of workforce development insight! WC is thrilled to present our latest innovation – the Community Investment Impact Dashboard.

Learn More

Community Investment Impact

Program Year	Funding	County	Commissioner	City	Council Person	More...
All	▼ All	▼ All	▼ All	▼ All	▼ All	

Total Investment	\$77.48M	Completions	12819
		<small>Number of individuals to complete WIOA Title I programs.</small>	
Classroom Training	\$22.50M	Annualized Wages	\$173.24M
<small>Traditional vocational training for hundreds of occupations in our region's industries.</small>		<small>Estimated yearly wages based on quarterly wage data.</small>	
On-the-Job Training	\$1.20M	Employed 2Q	58%
<small>Provides youth and adults the opportunity to earn while they learn and permanent job placement.</small>		<small>Percentage of individuals employed in 2nd quarter after completing the program.</small>	
Supportive Services	\$3.80M	Employed 4Q	46%
<small>Provides youth and adults with supports such as tools, workplace clothing and transportation assistance.</small>		<small>Percentage of individuals employed in 4th quarter after completing the program.</small>	
Paid Work Experience	\$6.14M	Credential Rate	71%
<small>Provides youth and adults with a paycheck while they learn real life skills in an entry level work experience.</small>		<small>Percentage of individuals enrolled in an education or training program who received a credential or diploma for completion.</small>	
Staff Provided Services	\$32.35M	Return on Investment (ROI)	5.4
<small>Provides youth and adults with job search assistance, employment workshops and employment opportunities.</small>		<small>Number of months to payback total investment with annualized wages.</small>	
Operational Costs	\$11.48M		
<small>Support staff, equipment and supplies.</small>			



workforce **CONNECTIONS**
PEOPLE. PARTNERSHIPS. POSSIBILITIES.

4. Building partnerships

WIOA partner programs

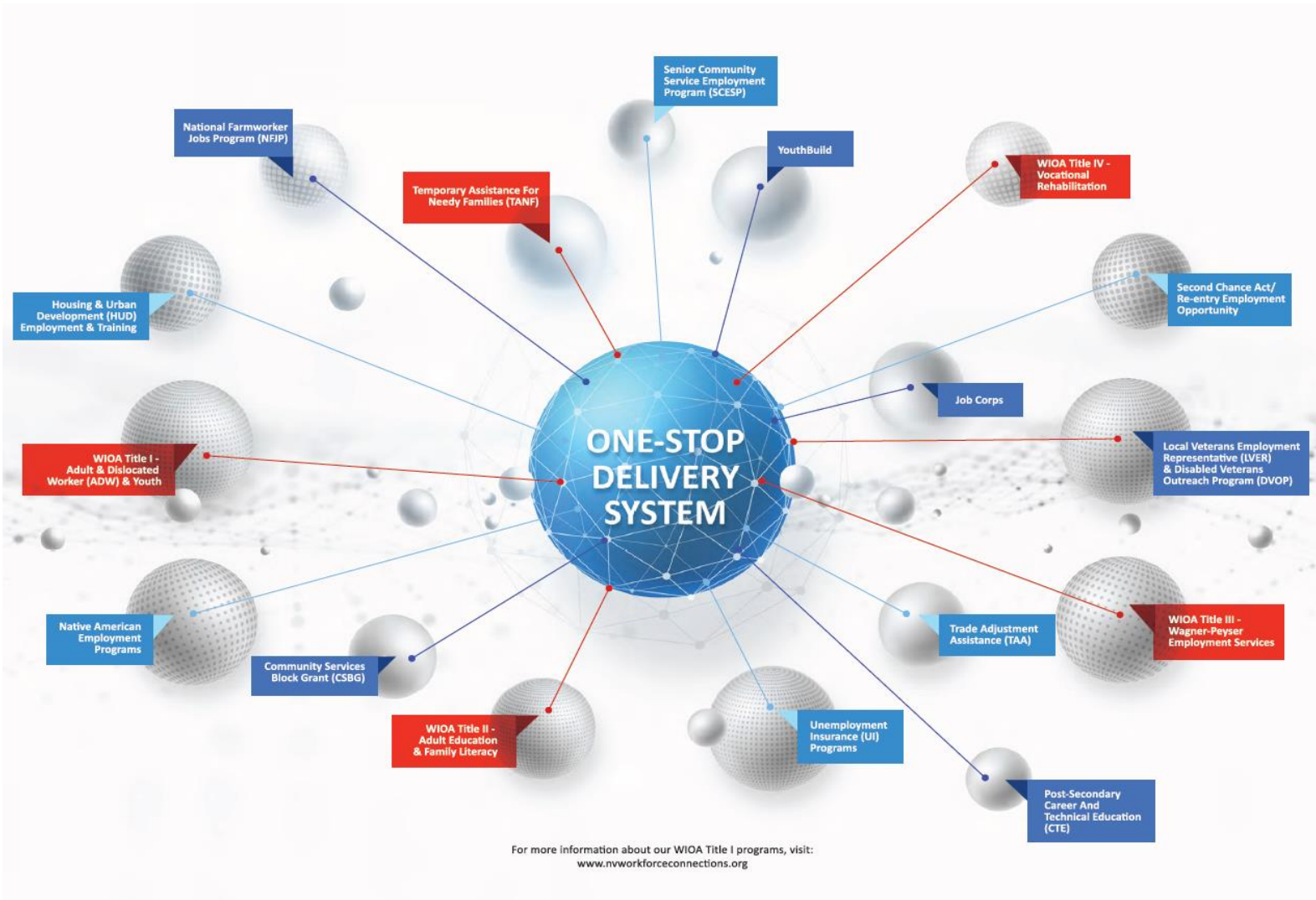
Childcare Assistance Funds

Federal, State, County and City Discretionary Funds



workforce CONNECTIONS

PEOPLE. PARTNERSHIPS. POSSIBILITIES.





workforce **CONNECTIONS**
PEOPLE. PARTNERSHIPS. POSSIBILITIES.

Diversified Funding



Connecting Employers to a Ready Workforce



workforce **CONNECTIONS**
PEOPLE. PARTNERSHIPS. POSSIBILITIES.

5. Best practices

Processes learned and implemented

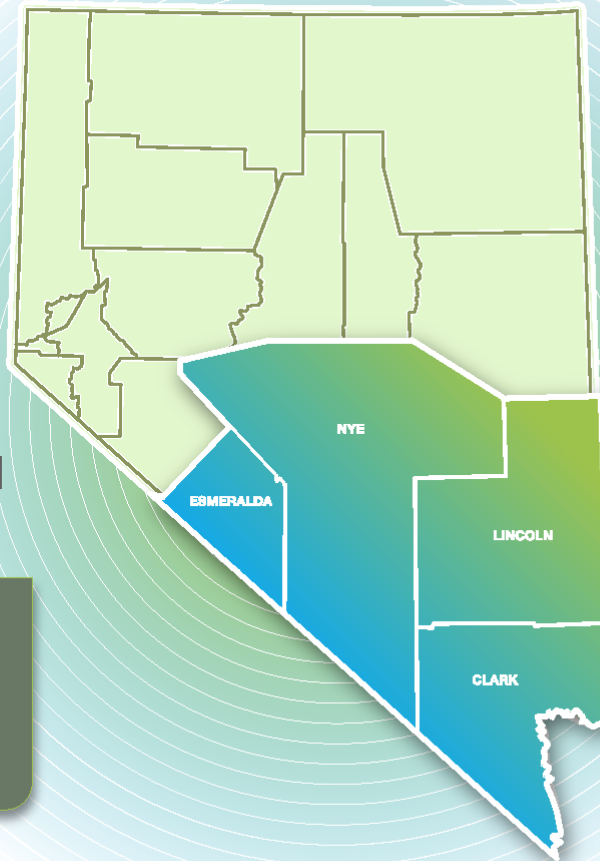


Southern Nevada's Industry Sector Partnerships

Employer-Driven & Community-Supported

MISSION

Align the local development pipeline to effectively meet the needs of the region's target industries



GOALS

- Increase engagement between industry & talent pipeline
- Connect employers to workforce system resources
- Embed industry needs in the talent development pipeline



EMPLOYER BENEFITS

- Direct connection to American Job Centers, known as EmployNV Hubs
- Access to talent including alternate labor pools
- Access to resources to hire, train, and retain employees
- Registered apprenticeships
- Online platforms connecting industry to the classroom
- Workforce blueprint for kids activity books (Grades K-5)
- Animated videos highlighting in-demand careers (MS)
- Student talent showcases (HS)



INDUSTRIES OF FOCUS

- Healthcare Services
- General & Advanced Manufacturing
- Information & Communication Technologies
- Transportation & Logistics Technologies
- Clean Technologies
- Business & Financial Services
- Creative Industries

180

Regional Employers in the ISP's

50

Industry Collective Actions

13

Industry Coverings Since Launch



workforce CONNECTIONS

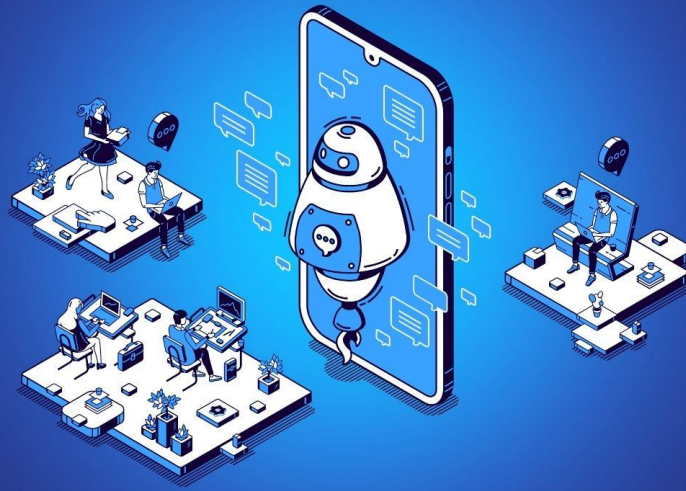
PEOPLE. PARTNERSHIPS. POSSIBILITIES.



CCSD STUDENT SHOWCASE

MONDAY, MARCH 20, 2023 | 3:00-5:00 PM

Meet highly skilled CCSD students who are getting ready to graduate and enter the workforce.

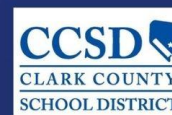


Watch a world championship winning robotics school demonstrate critical thinking, problem solving, communication, and teamwork.

Offer them internships and job opportunities in your organization!



Employer spaces are limited! RSVP now to:
Adrina Ramos-King at ark@snywc.org





Meet highly skilled
CCSD students who
are getting ready to
graduate and enter
the workforce.

CCSD STUDENT SHOWCASE

October 24, 2023 3 pm -5 pm

Southeast Career Technical Academy

5710 S Mountain Vista St. Las Vegas, NV 89120

The showcase will feature students preparing to
work in Manufacturing, Automotive, Information
Technologies & Cyber.

**Offer them internships and job opportunities to
work in your organization!**



Employer spaces are limited! RSVP required.
Adrina Ramos-King at: ark@snnvcc.org







nepris

FOR NEVADA

Powered by *Pathful*

NEVADA FULL STEAM AHEAD! SERIES



2022

WORKFORCE BLUEPRINT

SOUTHERN NEVADA

LAS VEGAS GLOBAL ECONOMIC ALLIANCE



The Workforce Blueprint highlights in-demand jobs in our region, and now, it's available for kids!

Print or download this and other fun activity books at:

NVMyFuture.org



DREAM IT

BELIEVE IT

Equivalent Fractions
 Multiplying both the numerator (top) and denominator (bottom) by the same number.
EXAMPLE
 $\frac{2(6)}{5(6)} = \frac{8}{20}$ $\frac{2(7)}{5(7)} = \frac{14}{35}$
 $\frac{2(3)}{5(3)} = \frac{6}{15}$ $\frac{2(9)}{5(9)} = \frac{18}{45}$

Changing A Mixed Number To An Improper Fraction
 $7\frac{3}{4} = \frac{31}{4}$

- Multiply denominator by whole number (7×4)
- Add Numerator to get new numerator
- Denominator stays the same

Multiplication Table

x	1	2	3	4	5	6	7	8	9	10	11	12
1	1	2	3	4	5	6	7	8	9	10	11	12
2	2	4	6	8	10	12	14	16	18	20	22	24
3	3	6	9	12	15	18	21	24	27	30	33	36
4	4	8	12	16	20	24	28	32	36	40	44	48
5	5	10	15	20	25	30	35	40	45	50	55	60
6	6	12	18	24	30	36	42	48	54	60	66	72
7	7	14	21	28	35	42	49	56	63	70	77	84
8	8	16	24	32	40	48	56	64	72	80	88	96
9	9	18	27	36	45	54	63	72	81	90	99	108
10	10	20	30	40	50	60	70	80	90	100	110	120
11	11	22	33	44	55	66	77	88	99	110	121	132
12	12	24	36	48	60	72	84	96	108	120	132	144

CLASS RULES

- We will be polite at all times.
- We will work quietly and not disturb others.
- We will listen respectfully when others talk.

Be friendly to fellow classmates, respect our teacher and other adults, and be prepared for class every day. Come to class on time, cooperate with others, and always do our best. Never give up!

Handwritten on the whiteboard:

$$7\frac{1}{5} \times \frac{6}{30} = 6 + \frac{6}{30} + \frac{20}{30}$$

$$= 6\frac{26}{30}$$

$$= 6\frac{13}{15}$$

$$- 3\frac{4}{6} \times \frac{20}{30} = 20 - \frac{20}{30} = 19\frac{10}{30} = 19\frac{1}{3}$$

Below the board, a student's name tag reads: **Nicholas Freda**

Multiplication and Division of Fractions

Multiply Fractions
 $\frac{5}{7} \times \frac{2}{3} = \frac{5(2)}{7(3)} = \frac{10}{21}$
 $\frac{3}{4} \times 5 = \frac{3}{4} \times \frac{5}{1} = \frac{15}{4}$ Improper Fraction

Dividing Fractions
 $\frac{5}{6} \div \frac{4}{7} = \frac{5}{6} \times \frac{7}{4} = \frac{35}{24}$

Order of Operations

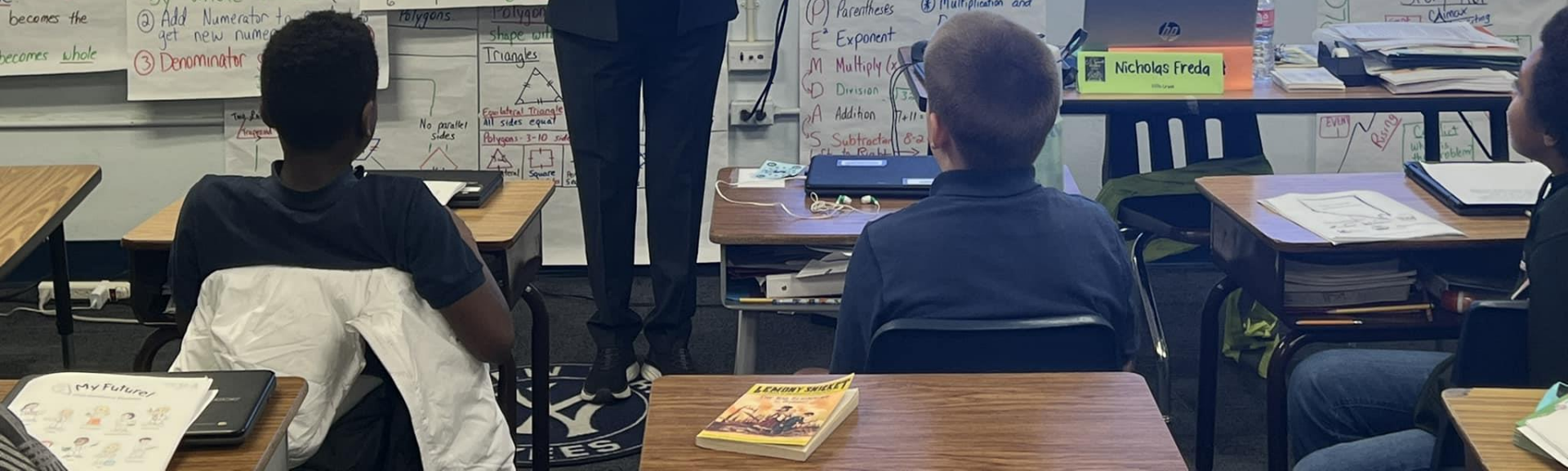
(P) Parentheses
 (E) Exponent
 (M) Multiply
 (D) Division
 (A) Addition
 (S) Subtraction

① Multiplication and Division
 ② Addition and Subtraction

Triangles
 Equilateral Triangle: All sides equal
 Isosceles Triangle: 2 equal sides
 Scalene Triangle: No parallel sides
 Right Triangle: 90 degree angle
 Square: All sides equal, all angles 90 degrees

CHALLENGE

- SILENCE
- PARTNER TALK
- TABLE TALK
- HELP
- RAISE YOUR HAND
- ASK YOUR PARTNER
- COME SEE ME
- ACTIVITY
- INDEPENDENT
- TEACHER DIRECTED
- PARTNER GROUP
- MOVEMENT
- TRY HEATED
- ONLY WITH PERMISSION
- MOVE FREELY
- PARTICIPATION
- ANSWER WHEN CALLED ON
- FOCUS ON ASSIGNMENT
- EVERYONE SHARES





workforce **CONNECTIONS**
PEOPLE. PARTNERSHIPS. POSSIBILITIES.

Q&A

workforce **CONNECTIONS**
PEOPLE. PARTNERSHIPS. POSSIBILITIES.

Connecting Employers to a Ready Workforce



Embedded American Job Center staff at Vegas Chamber and Las Vegas Global Economic Alliance (our Regional Development Agency)

https://youtu.be/aXst_waSyrE?si=stT Akz2U1s2TIMCY

<https://youtu.be/vzaiiGH6Fic?si=IM5 llgKtHklovJZ8>

American Job Centers at Vegas Chamber and other partners

<https://youtu.be/dZOTNrU0IqQ?si=y SkoXwfll1OiWLHV>

<https://youtu.be/edRJplTDIAI?si=oxk PfgCjEl0sFj4k>

https://youtu.be/-66ZxzUh_P8?si=BQA9YLfX-fb2z07c

https://youtu.be/z2fm2gZEd84?si=P M0Ze_V7Sgz0TnQa



Industry Sector Partnerships (WIOA and non WIOA resources for employers)

<https://youtu.be/tcTGqTggMm0?si=L TlvOkckEuAHKGRW>

<https://youtu.be/b1ZAgTqPvSc?si=ou IGiWO4QXWgflu7>

<https://youtu.be/Az9BWA7sXr0?si=S Skk9ZmPx2C0jfZ4>

Alternate labor pools (re-entry, vets, people with disabilities, disconnected youth)

<https://youtu.be/aSFZLcBlv8Q?si=wJi qPmZojFIGVt4u>

<https://youtu.be/Y4TOu2aFq9o?si=3 1Q6ctO7ExCJb5QM>

<https://youtu.be/SJYKK1j5lpU>

https://youtu.be/_rbsxdo6dEI?si=4 n4TyoCsNxaAbHD

https://youtu.be/e44_KITGWVs?si=G QxufUX_ArKKxaZy



K-12 initiatives (elementary, middle and high school)

<https://youtu.be/n0AGqFZeEbM?si=Jk3GBjGUAX7kxysF>

https://youtu.be/jmG-pjQZbwE?si=FDg_eBRvndp-t5ul

<https://youtu.be/X0SWZs3GvUU?si=nrCOCAtMM02IK7Jq>

<https://youtu.be/u24YIXNnBqM?si=xJMTc-D8aX9TCOzi>